

Reconnaissance (1:20,000) Fish and Fish Habitat Stream Inventory in the Kispiox Working Group

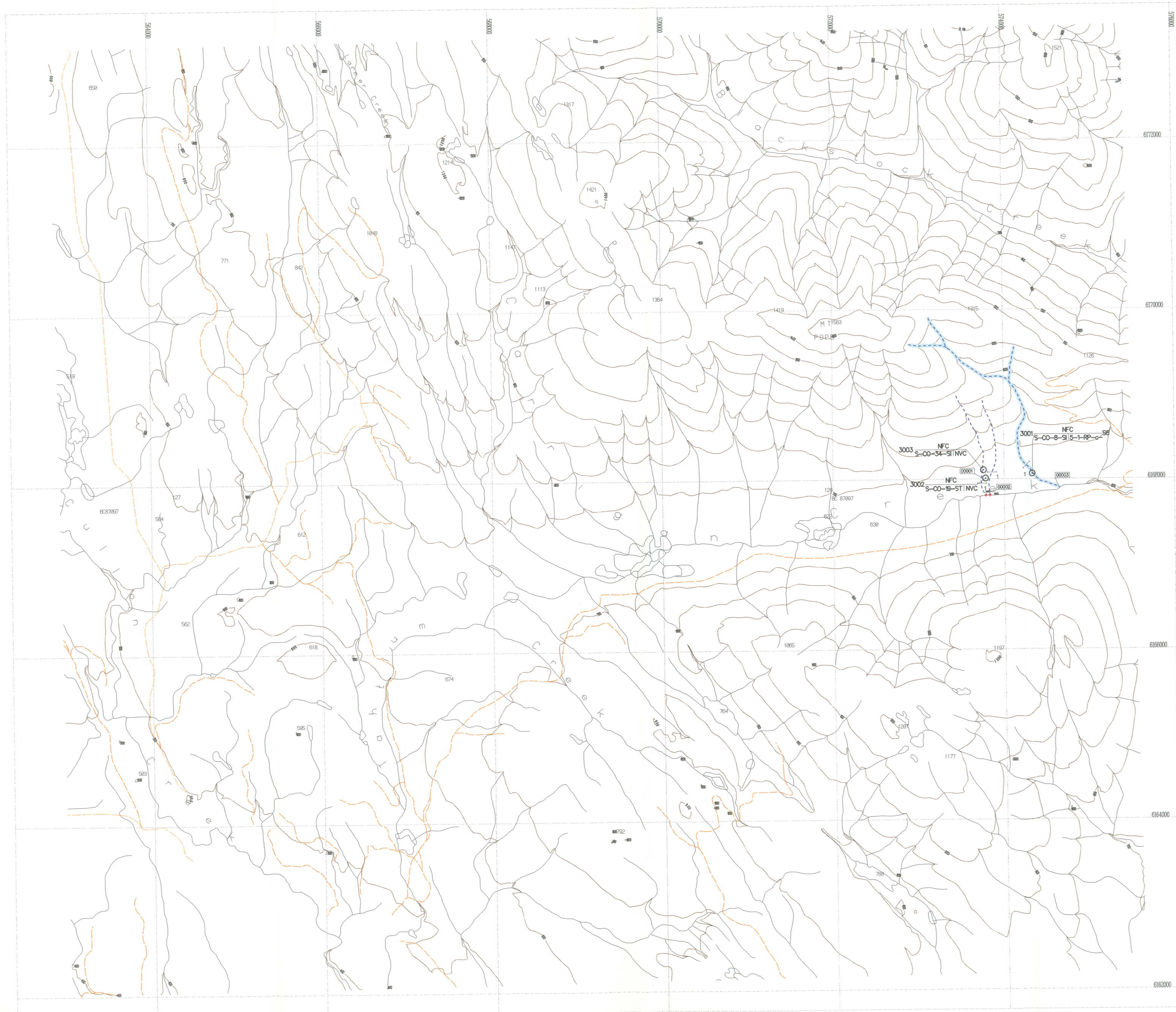
CARRIGAN CREEK

Scale 1:20,000



Date: 1998/06/15 (yyyy/mm/dd)

Company: SJS of TRITON Environmental Consultants Ltd.



Stream Information Summary

123-12345-1234- Watershed Code

Stream Summary Symbol: S-PC-3-R-12-12-PP-g-C3C4S3 S1

Sample Site ID: 15

Stream(S) Wetland(W): CO DV RB

Fish Code(s): 12-12-PP-g-C3C4S3

Stream Classification: S1

Riparian Class	Stream Zone(m)	Management Zone(m)	Management Area(m)
S1	50	20	70
S2	30	20	50
S3	20	20	40
S4	0	30	30
S5	0	30	30
S6	0	20	20

Obstructions: Beaver Dam, Cascade, Dam, Falls, Culvert, Persistent Debris Accumulation

Features: Eroded Bank, Alluvial Fan, Colluvial Fan, Talus Cone, Rock Outcrop, Slumping Bank, Slump, Bedrock-Confinement, Landslide Debris, Landslide Area, Dewatered Section, Braided Stream, Backwater, Wetland/Marsh, Spring, Groundwater, Tributary, Side Channel

Enhancement/Management Activities: Fish Hatchery, Fishway, Incubation Box, Spawning Channel, Weir, Waste Regulated Site Aquaculture, Waste Regulated Site Hatchery, Counting Fence, Fisheries Sensitive Zone

Hydrometric Stations: Flow Active, Flow Inactive, Well, Both Active, Both Inactive, Level Active, Level Inactive

Fish Presence: Fish Presence - Sampled, Fish Presence - Inferred, No Fish Presence - Sampled, No Fish Presence - Inferred

Base Map Anomalies: Field-Identified Stream, Base Map Discontinuity, No Viable Channel

TRIM Features

- River/Stream
  - River/Stream - intermittent
  - Lake
  - Lake - intermittent
  - Lake - indefinite
  - Swamp
  - Marsh
  - Island
  - Sand/Gravel Bar
  - Coastline
  - Icelfield
  - Glacier
  - Road - 1 lane, loose surface
  - Road - rough surface
  - Index Contour (100m interval)
- \* hydrological features outside the project study area appear as thin black lines

Fish Species

CODE	DESCRIPTION	CODE	DESCRIPTION	CODE	DESCRIPTION
BT	Bull Trout	NS	Not Sampled		
CH	Chinook	RB	Rainbow Trout		
CO	Coho	SU	Suckers, General		
CT	Cutthroat Trout	TR	Trout, General		
DV	Dolly Varden	TSB	Threespine Stickleback		
NFC	No Fish Count				

SOURCE: MELP

Stream Summary Symbol Information

REACH CHARACTERISTICS	CHANNEL MORPHOLOGY	OBSTRUCTIONS
NS: not specified	F: fines	S1: sediment fingers
NVC: no viable channel	G: gravel	S2: sediment wedges
CO: confined	C: cobble	S3: sediment bars
FC: frequently confined	B: boulder	S4: sediment scoured zones
OC: occasionally confined	R: rock, boulders, etc.	
UN: unconfined	M: major members	
NA: not applicable	M: minor members	
	ME: regular members	
	R: irregular members	
	S: streambank	
	ST: straight	

Disclaimer

The Province has not accepted the contents of this product for the purposes of the Forest Practices Code, and reserves the right to dispute the validity of summarized results. The Province does not necessarily agree with the classification assigned to any individual stream reach, for use in logging plans, silviculture prescriptions or any other application.

Inventory Source Information Codes

CODE	DESCRIPTION	CODE	DESCRIPTION	CODE	DESCRIPTION	CODE	DESCRIPTION	CODE	DESCRIPTION
TR	1:20,000 TRM Maps	IN	Field Inventory	VA	Aerial Photography	VD	Video	W	Watershed Inventory
NIS	1:50,000 NIS Maps	SS	Summary	VPC	Video, corrected	WIP	Watershed Inventory	WIP	Watershed Inventory
OTM	Other Map Source	N/A	Not Applicable	OTM	Other	WIP	Watershed Inventory	WIP	Watershed Inventory
OTM	Other	OTM	Other	WIP	Watershed Inventory	WIP	Watershed Inventory	WIP	Watershed Inventory
IN	Field Inventory	OTM	Other	WIP	Watershed Inventory	WIP	Watershed Inventory	WIP	Watershed Inventory
SS	Summary	WIP	Watershed Inventory	WIP	Watershed Inventory	WIP	Watershed Inventory	WIP	Watershed Inventory
N/A	Not Applicable	WIP	Watershed Inventory	WIP	Watershed Inventory	WIP	Watershed Inventory	WIP	Watershed Inventory
OTM	Other	WIP	Watershed Inventory	WIP	Watershed Inventory	WIP	Watershed Inventory	WIP	Watershed Inventory

Inventory Source Information

BASE: TR STR SYM: INV  
 LOC: PDG LK SYM: N/A  
 HAB: INV  
 FISH: INV  
 DATE INV: 1997/09/22 INV MGMT: MELP

Adjoining Sheet Index in the British Columbia Geographic System

103P080	093M071	093M072
103P070	093M061	093M082
103P080	093M051	093M052

Base Map Information

Projection: Universe Transvers Mercator  
 Datum: North American Datum - NAD83  
 UTM Zone: 9