

**Reconnaissance (1:20,000) Fish and Fish Habitat  
Inventory**

**Tributaries in the Bulkley River Watershed  
2000**

- **Appendix III: Photographs**

**Index of Photos  
(Arranged by Site)**

Site	Roll#	Frame #	Neg #	CD #	Image #	Watershed Code	Gazetted Name	ILPMap	ILP	Reach	Dir	Owner	Focal Length	Date	Comment
185	8	24	24	2	74	460-000000	Bulkley R.			1.0	X	SITE	STD	9/12/2000	Anode
185	8	25	25	2	75	460-000000	Bulkley R.			1.0	U	SITE	STD	9/12/2000	Maciek
186	32	13	13	7	63	460-000000	Bulkley R.			6.0	U	SITE	STD	10/15/2000	09.48 Mac
186	32	14	14	7	64	460-000000	Bulkley R.			6.0	D	SITE	STD	10/15/2000	09.49 Mac
187	6	9	9	2	9	460-000000	Bulkley R.			9.0	U	SITE	STD	9/7/2000	BD (Mac)
187	6	10	10	2	10	460-000000	Bulkley R.			9.0	D	SITE	STD	9/7/2000	Maciek
187	6	11	11	2	11	460-000000	Bulkley R.			9.0	D	SITE	STD	9/7/2000	15.58 Mac
188	6	3	3	2	3	460-000000	Bulkley R.			12.0	U	SITE	STD	9/7/2000	12.13 (pool) cam bag
188	6	4	4	2	4	460-000000	Bulkley R.			12.0	D	SITE	STD	9/7/2000	12.13 (dry) - cambag
189	6	14	14	2	14	460-000000	Bulkley R.			17.0	U	SITE	STD	9/8/2000	09.48 - cam bag
189	6	15	15	2	15	460-000000	Bulkley R.			17.0	D	SITE	STD	9/8/2000	cam bag
190	6	12	12	2	12	460-000000	Bulkley R.			21.0	BD	SITE	STD	9/7/2000	17.05 cam bag
191	22	3	3	5	44	460-702000	Aitken C.			3.0	U	SITE	STD	9/25/2000	cam bag (rocks)
191	22	4	4	5	45	460-702000	Aitken C.			3.0	D	SITE	STD	9/25/2000	cam bag (log)
192	22	23	23	5	64	460-702000	Aitken C.			6.0	U	SITE	STD	9/26/2000	16.40 cam bag
192	22	24	24	5	65	460-702000	Aitken C.			6.0	D	SITE	STD	9/26/2000	16.41 cam bag
193	22	8	8	5	49	460-702000	Aitken C.			8.0	D	SITE	STD	9/26/2000	10.03 cam bag
193	22	9	9	5	50	460-702000	Aitken C.			8.0	U	SITE	STD	9/26/2000	10.05 cam bag
194	22	10	10	5	51	460-702000	Aitken C.			9.0	U	SITE	STD	9/26/2000	10.34 Marek
194	22	11	11	5	52	460-702000	Aitken C.			9.0	D	SITE	STD	9/26/2000	10.34 probe
195	24	1	1	5	91	460-702000-59551				4.0	X	SITE	STD	9/27/2000	(No scale)
196	22	25	25	5	66	460-702000-59551				6.0	BD	SITE	STD	9/27/2000	10.02 boot
197	22	1	1	5	42			93L.049	49030	2.0	U	SITE	STD	9/25/2000	1418 boot
197	22	2	2	5	43			93L.049	49030	2.0	D	SITE	STD	9/25/2000	14.19 cam bag
199	22	5	5	5	46			93L.039	39003	1.0	U	SITE	STD	9/25/2000	15.54 boots
199	22	6	6	5	47			93L.039	39003	1.0	D	SITE	STD	9/25/2000	15.54 cam bag
200	24	4	4	5	94			93L.039	39009	1.0	U	SITE	STD	9/27/2000	cam bag
200	24	5	5	5	95			93L.039	39009	1.0	D	SITE	STD	9/27/2000	cam bag
201	22	15	15	5	56	460-702000-82800				1.1	U	SITE	STD	9/26/2000	14.29 Marek
201	22	16	16	5	57	460-702000-82800				1.1	D	SITE	STD	9/26/2000	14.30 Marek
201	22	17	17	5	58	460-702000-82800				1.1	U	SITE	STD	9/26/2000	falls in features (Marek)
202	22	18	18	5	59	460-702000-82800				2.0	U	SITE	STD	9/26/2000	cascade in features - person
202	22	19	19	5	60	460-702000-82800				2.0	U	SITE	STD	9/26/2000	15.05 cam bag
202	22	20	20	5	61	460-702000-82800				2.0	D	SITE	STD	9/26/2000	15.06 cam bag
203	22	12	12	5	53	460-702000-82800				4.0	U	SITE	STD	9/26/2000	12.21 Mac
203	22	13	13	5	54	460-702000-82800				4.0	D	SITE	STD	9/26/2000	12.22 Marek
204	18	8	8	4	66	460-702000-82800				7.0	U	SITE	STD	9/18/2000	probe
205	22	21	21	5	62			93L.039	39012	2.0	U	SITE	STD	9/26/2000	cam bag
205	22	22	22	5	63			93L.039	39012	2.0	D	SITE	STD	9/26/2000	cam bag
206	22	14	14	5	55			93L.039	39014	1.0	X	SITE	STD	9/26/2000	12.43 no scale
207	18	9	9	4	67			93L.039	39016	1.0	U	SITE	STD	9/18/2000	(cam bag)
208	22	7	7	5	48			93L.039	39022	1.0	BD	SITE	STD	9/25/2000	17.18 (boot)
209	8	6	6	2	56	460-829700	Watson C.			4.0	U	SITE	STD	9/11/2000	Maciek
209	8	7	7	2	57	460-829700	Watson C.			4.0	D	SITE	STD	9/11/2000	Mac
210	8	18	18	2	68	460-829700	Watson C.			6.0	U	SITE	STD	9/12/2000	cam bag
210	8	19	19	2	69	460-829700	Watson C.			6.0	D	SITE	STD	9/12/2000	cam bag (pool)
211	30	5	5	7	5	460-829700	Watson C.			8.0	U	SITE	STD	10/6/2000	notebook
211	30	6	6	7	6	460-829700	Watson C.			8.0	D	SITE	STD	10/6/2000	cam bag
211	30	7	7	7	7	460-829700	Watson C.			8.0	U	SITE	STD	10/6/2000	feature - taken from helicopter
212	30	8	8	7	8	460-829700	Watson C.			11.0	U	SITE	STD	10/6/2000	map case
213	32	6	6	7	56			93L.049	49004	1.0	U	SITE	STD	10/14/2000	11.43 cam bag
213	32	7	7	7	57			93L.049	49004	1.0	D	SITE	STD	10/14/2000	11.44 cam bag
214	8	16	16	2	66			93L.049	49004	3.0	D	SITE	STD	9/12/2000	12.46 Mac

**Index of Photos  
(Arranged by Site)**

Site	Roll#	Frame #	Neg #	CD #	Image #	Watershed Code	Gazetted Name	ILPMap	ILP	Reach	Dir	Owner	Focal Length	Date	Comment
214	8	17	17	2	67			93L.049	49004	3.0	U	SITE	STD	9/12/2000	12.47 CAM BAG
215	8	15	15	2	65			93L.050	50001	1.0	U	SITE	STD	9/12/2000	12.24 cambag
216	8	20	20	2	70	460-829700-20600	Ailport C.			1.0	D	SITE	STD	9/12/2000	16.08 overhanging bank (Mac)
216	8	21	21	2	71	460-829700-20600	Ailport C.			1.0	U	SITE	STD	9/12/2000	Maciek
217	8	10	10	2	60	460-829700-20600	Ailport C.			3.0	D	SITE	STD	9/11/2000	Maciek
217	8	11	11	2	61	460-829700-20600	Ailport C.			3.0	U	SITE	STD	9/11/2000	Maciek
218	6	21	21	2	21	460-829700-20600	Ailport C.			8.0	U	SITE	STD	9/7/2000	15.39 (Maciek)
218	6	22	22	2	22	460-829700-20600	Ailport C.			8.0	D	SITE	STD	9/7/2000	15.40 (Mac)
219	6	23	23	2	23	460-829700-20600	Ailport C.			11.0	U	SITE	STD	9/8/2000	cascade in features - person
219	6	24	24	2	24	460-829700-20600	Ailport C.			11.0	D	SITE	STD	9/8/2000	16.14 (Mac)
219	6	25	25	2	25	460-829700-20600	Ailport C.			11.0	U	SITE	STD	9/8/2000	falls in feature - person
220	8	1	1	2	51	460-829700-20600	Ailport C.			12.0	U	SITE	STD	9/8/2000	16.52 Mac
220	8	2	2	2	52	460-829700-20600	Ailport C.			12.0	D	SITE	STD	9/8/2000	16.54 Mac
221	25	15	15	6	15	460-829700-20600	Ailport C.			16.0	U	SITE	STD	10/6/2000	(cam bag)
221	25	16	16	6	16	460-829700-20600	Ailport C.			16.0	D	SITE	STD	10/6/2000	(SR)
222	25	17	17	6	17	460-829700-20600	Ailport C.			17.0	D	SITE	STD	10/6/2000	(MJ)
222	25	18	18	6	18	460-829700-20600	Ailport C.			17.0	U	SITE	STD	10/6/2000	(MJ)
223	25	19	19	6	19	460-829700-20600	Ailport C.			21.0	U	SITE	STD	10/6/2000	(cam bag)
223	25	20	20	6	20	460-829700-20600	Ailport C.			21.0	D	SITE	STD	10/6/2000	(SR)
224	8	8	8	2	58			93L.050	50007	1.0	U	SITE	STD	9/11/2000	cam bag
225	8	9	9	2	59			93L.050	50009	2.0	X	SITE	STD	9/11/2000	(cam bag)
226	8	13	13	2	63	460-829700-20600-30400	North Ailport C.			2.0	U	SITE	STD	9/12/2000	Maciek
226	8	14	14	2	64	460-829700-20600-30400	North Ailport C.			2.0	D	SITE	STD	9/12/2000	Maciek
227	25	7	7	6	7	460-829700-20600-30400	North Ailport C.			4.0	D	SITE	STD	10/6/2000	(MJ)
227	25	8	8	6	8	460-829700-20600-30400	North Ailport C.			4.0	U	SITE	STD	10/6/2000	(cam bag)
228	25	9	9	6	9	460-829700-20600-30400	North Ailport C.			36982.0	U	SITE	STD	10/6/2000	(SR)
228	25	10	10	6	10	460-829700-20600-30400	North Ailport C.			36982.0	D	SITE	STD	10/6/2000	(cam bag)
229	30	9	9	7	9	460-829700-20600-30400	North Ailport C.			6.0	D	SITE	STD	10/6/2000	cam bag
229	30	10	10	7	10	460-829700-20600-30400	North Ailport C.			6.0	U	SITE	STD	10/6/2000	map case
230	25	5	5	6	5	460-829700-20600-30400-4430				0.1	U	SITE	STD	10/6/2000	(MJ) falls in features
230	25	6	6	6	6	460-829700-20600-30400-4430				0.1	D	SITE	STD	10/6/2000	(cam bag) - note huge pool, parent stream in background
231	25	3	3	6	3	460-829700-20600-30400-4430				1.0	U	SITE	STD	10/6/2000	(SR)
231	25	4	4	6	4	460-829700-20600-30400-4430				1.0	D	SITE	STD	10/6/2000	(cam bag)
232	30	15	15	7	15	460-829700-20600-30400-4430				5.0	U	SITE	STD	10/6/2000	probe
232	30	16	16	7	16	460-829700-20600-30400-4430				5.0	D	SITE	STD	10/6/2000	cam bag
233	30	17	17	7	17	460-829700-20600-30400-4430				7.0	D	SITE	STD	10/6/2000	15.01 notebook
233	30	18	18	7	18	460-829700-20600-30400-4430				7.0	U	SITE	STD	10/6/2000	15.01 cam bag
234	30	14	14	7	14			93L.060	60014	3.0	U	SITE	STD	10/6/2000	notebook
235	30	11	11	7	11			93L.060	60019	2.0	D	SITE	STD	10/6/2000	11.51 cam bag
236	30	12	12	7	12			93L.060	60019	3.0	U	SITE	STD	10/6/2000	12.14 boot
236	30	13	13	7	13			93L.060	60019	3.0	D	SITE	STD	10/6/2000	12.14 cam bag
237	8	12	12	2	62			93L.050	50010	3.0	U	SITE	STD	9/12/2000	10.01 cam bag
238	6	17	17	2	17	460-829700-20600-44600				4.0	U	SITE	STD	9/8/2000	12.10 Mac
238	6	18	18	2	18	460-829700-20600-44600				4.0	D	SITE	STD	9/8/2000	12.13 probe
239	6	19	19	2	19	460-829700-20600-44600				7.0	U	SITE	STD	9/8/2000	14.13 cam bag
240	8	3	3	2	53			93L.050	50014	4.0	U	SITE	STD	9/8/2000	17.28 cam bag
241	6	20	20	2	20			93L.050	50020	2.0	D	SITE	STD	9/8/2000	14.57 (cam bag)
242	25	11	11	6	11			93L.060	60024	5.0	U	SITE	STD	10/6/2000	(cam bag)
242	25	12	12	6	12			93L.060	60024	5.0	D	SITE	STD	10/6/2000	(SR)
244	25	13	13	6	13			93L.060	60032	1.0	U	SITE	STD	10/6/2000	(SR)
244	25	14	14	6	14			93L.060	60032	1.0	D	SITE	STD	10/6/2000	(cam bag)
245	25	21	21	6	21			93L.060	60039	2.0	U	SITE	STD	10/6/2000	(cam bag)

**Index of Photos**  
(Arranged by Site)

Site	Roll#	Frame #	Neg #	CD #	Image #	Watershed Code	Gazetted Name	ILPMap	ILP	Reach	Dir	Owner	Focal Length	Date	Comment
245	25	22	22	6	22			93L.060	60039	2.0	D	SITE	STD	10/6/2000	(SR)
246	8	4	4	2	54			93L.049	49007	1.0	U	SITE	STD	9/11/2000	13.22 cam bag
246	8	5	5	2	55			93L.049	49007	1.0	BD	SITE	STD	9/11/2000	13.23 cam bag
247	24	19	19	5	109	460-834400-26900				4.0	U	SITE	STD	9/28/2000	probe
247	24	20	20	5	110	460-834400-26900				4.0	D	SITE	STD	9/28/2000	cam bag
248	20	23	23	5	14	460-834400-26900				7.0	U	SITE	STD	9/25/2000	12.14 cam bag
250	24	7	7	5	97			93L.039	39034	1.0	U	SITE	STD	9/27/2000	14.50 (cam bag)
251	20	22	22	5	13			93L.039	39041	3.0	U	SITE	STD	9/25/2000	11.20 boot
252	24	14	14	5	104			93L.039	39046	2.0	U	SITE	STD	9/28/2000	11.55 cam bag
252	24	15	15	5	105			93L.039	39046	2.0	D	SITE	STD	9/28/2000	11.56 cam bag
253	24	12	12	5	102	460-834400-26900-80800				1.0	D	SITE	STD	9/28/2000	no scale (trees)
253	24	13	13	5	103	460-834400-26900-80800				1.0	U	SITE	STD	9/28/2000	Marek
254	24	18	18	5	108	460-834400-26900-80800				5.0	D	SITE	STD	9/28/2000	Marek and lake in background
255	24	16	16	5	106			93L.039	39047	2.0	U	SITE	STD	9/28/2000	12.36 cam bag
255	24	17	17	5	107			93L.039	39047	2.0	D	SITE	STD	9/28/2000	12.37 cam bag
256	30	24	24	7	24			93L.049	49042	2.0	U	SITE	STD	10/7/2000	09.29 cam bag
256	30	25	25	7	25			93L.049	49042	2.0	D	SITE	STD	10/7/2000	09.30 water tester
257	32	1	1	7	51			93L.049	49043	1.0	D	SITE	STD	10/7/2000	9:51 (Mac)
258	30	22	22	7	22			93L.049	49045	2.0	U	SITE	STD	10/7/2000	08.53 cam bag
258	30	23	23	7	23			93L.049	49045	2.0	D	SITE	STD	10/7/2000	08.54 cam bag
259	26	5	5A	6	27			93L.049	49045	4.0	X	SITE	STD	9/29/2000	10.55 (No scale)
261	26	4	4A	6	26			93L.049	49050	2.0	U	SITE	STD	9/29/2000	10.33 cam bag
262	32	2	2	7	52			93L.049	49013	2.0	U	SITE	STD	10/7/2000	Marek
263	32	3	3	7	53			93L.049	49015	2.0	U	SITE	STD	10/7/2000	10.21 Mac
264	32	4	4	7	54			93L.049	49022	1.0	U	SITE	STD	10/7/2000	10.36 cam bag
264	32	5	5	7	55			93L.049	49022	1.0	D	SITE	STD	10/7/2000	10.38 cam bag
265	26	6	6A	6	28	460-882900				2.0	U	SITE	STD	9/29/2000	13.12 cam bag
265	26	7	7A	6	29	460-882900				2.0	D	SITE	STD	9/29/2000	13.13 cam bag
266	26	8	8A	6	30	460-882900				3.1	U	SITE	STD	9/29/2000	14.11 (cam bag)
266	26	9	9A	6	31	460-882900				3.1	D	SITE	STD	9/29/2000	14.12 (cam bag)
266	26	10	10A	6	32	460-882900				3.1	U	SITE	STD	9/29/2000	cascade in features (Marek)
267	32	10	10	7	60	460-882900				4.0	U	SITE	STD	10/14/2000	14.38 cam bag
267	32	11	11	7	61	460-882900				4.0	D	SITE	STD	10/14/2000	14.39 (boot)
268	26	11	11A	6	33	460-882900				5.0	X	SITE	STD	9/29/2000	14.52 (No scale)
269	32	12	12	7	62	460-882900				7.0	D	SITE	STD	10/14/2000	15.40 (Mac)
272	32	8	8	7	58			93L.050	50086	2.0	U	SITE	STD	10/14/2000	13.00 cam bag
272	32	9	9	7	59			93L.050	50086	2.0	D	SITE	STD	10/14/2000	13.01 cam bag
273	26	2	2A	6	24			93L.050	50088	2.0	U	SITE	STD	9/28/2000	17.40 cam bag
273	26	3	3A	6	25			93L.050	50088	2.0	D	SITE	STD	9/28/2000	17.41 cam bag
275	8	22	22	2	72			93L.050	50025	2.0	U	SITE	STD	9/12/2000	16.56 (Mac)
275	8	23	23	2	73			93L.050	50025	2.0	U	SITE	STD	9/12/2000	culvert obstruction in features (Mac)
276	4	25	25A	1	98			93L.050	50026	1.0	D	SITE	STD	9/7/2000	10.07 cam bag
278	24	23	23	5	113			93L.040	40008	3.0	U	SITE	STD	9/28/2000	16.29 cam bag
278	24	24	24	5	114			93L.040	40008	3.0	D	SITE	STD	9/28/2000	16.30 cam bag
279	24	25	25	5	115			93L.040	40008	5.0	X	SITE	STD	9/28/2000	Dam in features (truck)
279	26	1	1A	6	23			93L.040	40008	5.0	U	SITE	STD	9/28/2000	view from dam u/s (No scale)
280	24	21	21	5	111			93L.040	40009	2.0	U	SITE	STD	9/28/2000	15.53 cam bag
280	24	22	22	5	112			93L.040	40009	2.0	D	SITE	STD	9/28/2000	15.54 cam bag
281	16	7	7	4	15	460-917900	Crow C.			2.1	U	SITE	STD	9/17/2000	(Mac)
281	16	8	8	4	16	460-917900	Crow C.			2.1	D	SITE	STD	9/17/2000	(Maciek)
281	16	9	9	4	17	460-917900	Crow C.			2.1	U	SITE	STD	9/17/2000	1st falls in features (Maciek)
282	16	12	12	4	20	460-917900	Crow C.			3.0	U	SITE	STD	9/17/2000	person - 2nd falls
282	16	15	15	4	23	460-917900	Crow C.			3.0	U	SITE	STD	9/17/2000	Mac 13.14

**Index of Photos  
(Arranged by Site)**

Site	Roll#	Frame #	Neg #	CD #	Image #	Watershed Code	Gazetted Name	ILPMap	ILP	Reach	Dir	Owner	Focal Length	Date	Comment
282	16	16	16	4	24	460-917900	Crow C.			3.0	D	SITE	STD	9/17/2000	13.15 (Mac)
283	18	1	1	4	59	460-917900	Crow C.			4.0	U	SITE	STD	9/18/2000	hip chain
283	18	2	2	4	60	460-917900	Crow C.			4.0	D	SITE	STD	9/18/2000	cam bag
284	18	3	3	4	61	460-917900	Crow C.			6.0	D	SITE	STD	9/18/2000	12.24 boots
285	24	6	6	5	96	460-917900-43562				3.0	BD	SITE	STD	9/27/2000	14.02 boot
286	20	21	21	5	12	460-917900-53145				1.0	BD	SITE	STD	9/25/2000	10.50 cam bag
287	16	2	2	4	10	460-917900-58000				0.1	U	SITE	STD	9/17/2000	10.59 Mac
287	16	3	3	4	11	460-917900-58000				0.1	D	SITE	STD	9/17/2000	10.59 Mac
287	16	4	4	4	12	460-917900-58000				0.1	U	SITE	STD	9/17/2000	cascade in features (Mac)
288	16	5	5	4	13	460-917900-58000				1.0	U	SITE	STD	9/17/2000	Mac
288	16	6	6	4	14	460-917900-58000				1.0	D	SITE	STD	9/17/2000	cam bag
289	18	10	10	4	68	460-917900-58000				2.0	D	SITE	STD	9/18/2000	cam bag (log)
289	18	11	11	4	69	460-917900-58000				2.0	U	SITE	STD	9/18/2000	cam bag (alder)
290	18	6	6	4	64	460-917900-58000				4.0	U	SITE	STD	9/18/2000	cam bag
290	18	7	7	4	65	460-917900-58000				4.0	D	SITE	STD	9/18/2000	cam bag
291	18	4	4	4	62	460-917900-73600				1.0	U	SITE	STD	9/18/2000	cam bag
291	18	5	5	4	63	460-917900-73600				1.0	D	SITE	STD	9/18/2000	hip chain
292	10	1	1	2	100	460-924300	Maxan C.			2.0	U	SITE	STD	9/13/2000	09.40 Mac
292	10	2	2	2	101	460-924300	Maxan C.			2.0	D	SITE	STD	9/13/2000	09.40 Mac
293	18	15	15	4	73			93L.040	40016	1.0	U	SITE	STD	9/23/2000	probe
293	18	16	16	4	74			93L.040	40016	1.0	D	SITE	STD	9/23/2000	cam bag
294	18	17	17	4	75			93L.040	40016	3.1	U	SITE	STD	9/23/2000	falls in features (Marek)
294	18	18	18	4	76			93L.040	40016	3.1	U	SITE	STD	9/23/2000	probe
295	18	19	19	4	77			93L.040	40018	1.0	U	SITE	STD	9/23/2000	17.40 tester
295	18	20	20	4	78			93L.040	40018	1.0	D	SITE	STD	9/23/2000	17.41 cam bag
296	18	21	21	4	79			93L.040	40018	2.0	U	SITE	STD	9/23/2000	17.59 meter stick
296	18	22	22	4	80			93L.040	40018	2.0	D	SITE	STD	9/23/2000	18.00 cam bag
297	24	8	8	5	98			93L.040	40021	1.0	X	SITE	STD	9/27/2000	(Marek)
298	18	23	23	4	81			93L.040	40023	2.0	U	SITE	STD	9/23/2000	18.31 cam bag
298	18	24	24	4	82			93L.040	40023	2.0	D	SITE	STD	9/23/2000	18.32 cam bag
299	24	11	11	5	101			93L.040	40024	1.0	U	SITE	STD	9/27/2000	(Marek) diverted "channel" UTM: 09.685596.6023879
300	24	9	9	5	99			93L.040	40024	3.0	U	SITE	STD	9/27/2000	16.41 (cam bag)
300	24	10	10	5	100			93L.040	40024	3.0	D	SITE	STD	9/27/2000	16.42 (Mac)
301	10	3	3	2	102	460-924300-31500	Foxy C.			2.0	U	SITE	STD	9/13/2000	10.40 Mac
301	10	4	4	2	103	460-924300-31500	Foxy C.			2.0	D	SITE	STD	9/13/2000	10.40 Mac
302	10	5	5	2	104	460-924300-31500	Foxy C.			4.0	U	SITE	STD	9/13/2000	(Mac)
302	10	6	6	2	105	460-924300-31500	Foxy C.			4.0	D	SITE	STD	9/13/2000	(Mac)
302	10	12	12	2	111	460-924300-31500	Foxy C.			4.0	U	SITE	STD	9/13/2000	15.44 Mac
302	10	13	13	2	112	460-924300-31500	Foxy C.			4.0	BD	FISH	STD	9/13/2000	Fat RBI (ruler)
302	10	14	14	2	113	460-924300-31500	Foxy C.			4.0	D	SITE	STD	9/13/2000	15.44 Mac
302	12	10	10A	3	38	460-924300-31500	Foxy C.			4.0	U	SITE	STD	9/13/2000	1st falls in features (Maciek)
302	12	11	11A	3	39	460-924300-31500	Foxy C.			4.0	U	SITE	STD	9/13/2000	double falls in features (Maciek)
303	14	13	13	3	91	460-924300-31500	Foxy C.			5.0	D	SITE	STD	9/16/2000	vest
303	14	14	14	3	92	460-924300-31500	Foxy C.			5.0	U	SITE	STD	9/16/2000	vest
304	14	1	1	3	79	460-924300-31500	Foxy C.			9.0	U	SITE	STD	9/15/2000	Maciek
304	14	2	2	3	80	460-924300-31500	Foxy C.			9.0	D	SITE	STD	9/15/2000	(Maciek)
306	10	9	9	2	108			93L.030	30009	1.0	U	SITE	STD	9/13/2000	LS in features (Mac)
306	10	10	10	2	109			93L.030	30009	1.0	U	SITE	STD	9/13/2000	Chute in features (Maciek)
306	10	11	11	2	110			93L.030	30009	1.0	D	SITE	STD	9/13/2000	Mac
308	16	20	20	4	28	460-924300-31500-30900				1.0	U	SITE	STD	9/18/2000	1st falls in features (Maciek)
308	16	22	22	4	30	460-924300-31500-30900				1.0	U	SITE	STD	9/18/2000	Maciek
308	16	23	23	4	31	460-924300-31500-30900				1.0	D	SITE	STD	9/18/2000	Maciek

**Index of Photos  
(Arranged by Site)**

Site	Roll#	Frame #	Neg #	CD #	Image #	Watershed Code	Gazetted Name	ILPMap	ILP	Reach	Dir	Owner	Focal Length	Date	Comment
308	16	24	24	4	32	460-924300-31500-30900				1.0	U	SITE	STD	9/18/2000	2nd falls in features (Maciek)
308	16	25	25	4	33	460-924300-31500-30900				1.0	U	SITE	STD	9/18/2000	LS in features (Maciek)
309	16	18	18	4	26	460-924300-31500-30900				2.0	U	SITE	STD	9/17/2000	16.20 boot
309	16	19	19	4	27	460-924300-31500-30900				2.0	D	SITE	STD	9/17/2000	16.20 boot
310	16	17	17	4	25			93L.029	29002	1.0	U	SITE	STD	9/17/2000	16.06 (Mac)
312	20	1	1	4	109			93L.029	29006	1.0	U	SITE	STD	9/24/2000	10.28 cam bag
312	20	2	2	4	110			93L.029	29006	1.0	D	SITE	STD	9/24/2000	10.31 Mac
313	10	24	24	3	5			93L.029	29008	2.0	BD	SITE	STD	9/13/2000	17.44 boot
314	10	15	15	2	114	460-924300-31500-40900				0.1	D	SITE	STD	9/13/2000	(Maciek)
314	10	16	16	2	115	460-924300-31500-40900				0.1	U	SITE	STD	9/13/2000	falls in features (Mac)
314	10	23	23	3	4	460-924300-31500-40900				0.1	U	SITE	STD	9/13/2000	16.56 Mac
315	10	17	17	2	116	460-924300-31500-40900				0.2	U	SITE	STD	9/13/2000	falls (Maciek)
315	10	21	21	3	2	460-924300-31500-40900				0.2	U	SITE	STD	9/13/2000	16.49 Mac
315	10	22	22	3	3	460-924300-31500-40900				0.2	D	SITE	STD	9/13/2000	16.50 Maciek
316	14	5	5	3	83	460-924300-31500-40900				4.0	D	SITE	STD	9/15/2000	Maciek
316	14	6	6	3	84	460-924300-31500-40900				4.0	U	SITE	STD	9/15/2000	cam bag
316	14	7	7	3	85	460-924300-31500-40900				4.0	X	SITE	STD	9/15/2000	Maciek (braided and scoured channel)
317	20	19	19	5	10	460-924300-31500-40900				5.0	U	SITE	STD	9/25/2000	meter stick
317	20	20	20	5	11	460-924300-31500-40900				5.0	D	SITE	STD	9/25/2000	cam bag
318	10	18	18	2	117	460-924300-31500-40900-0521				1.0	U	SITE	STD	9/24/2000	falls at mouth in features (Maciek)
318	20	3	3	4	111	460-924300-31500-40900-0521				1.0	BD	FISH	STD	9/24/2000	(Probe) - RB photo
318	20	4	4	4	112	460-924300-31500-40900-0521				1.0	U	SITE	STD	9/24/2000	12.26 cam bag
318	20	5	5	4	113	460-924300-31500-40900-0521				1.0	D	SITE	STD	9/24/2000	12.27 cam bag
318	20	6	6	4	114	460-924300-31500-40900-0521				1.0	U	SITE	STD	9/24/2000	2nd falls in features (Marek)
319	20	9	9	4	117	460-924300-31500-40900-0521				4.0	U	SITE	STD	9/24/2000	15.20 Mac
319	20	10	10	5	1	460-924300-31500-40900-0521				4.0	D	SITE	STD	9/24/2000	15.21 cam bag
320	20	15	15	5	6	460-924300-31500-40900-0521				7.0	D	SITE	STD	9/24/2000	17.27 cam bag
320	20	16	16	5	7	460-924300-31500-40900-0521				7.0	BD	SITE	STD	9/24/2000	17.28 boot
321	20	7	7	4	115			93L.029	29009	1.0	U	SITE	STD	9/24/2000	14.59 cam bag
321	20	8	8	4	116			93L.029	29009	1.0	D	SITE	STD	9/24/2000	15.00 cam bag
322	20	17	17	5	8			93L.029	29017	1.0	U	SITE	STD	9/24/2000	17.57 Mac
322	20	18	18	5	9			93L.029	29017	1.0	D	SITE	STD	9/24/2000	17.58 cam bag
324	12	1	1A	3	29			93L.029	29027	0.1	U	SITE	STD	9/14/2000	falls in features (Mac)
324	12	2	2A	3	30			93L.029	29027	0.1	U	SITE	STD	9/14/2000	10.17 backpack
324	12	3	3A	3	31			93L.029	29027	0.1	D	SITE	STD	9/14/2000	10.17 (Mac)
325	14	25	25	3	103			93L.029	29027	1.0	U	SITE	STD	9/16/2000	cam bag
325	16	1	1	4	9			93L.029	29027	1.0	D	SITE	STD	9/16/2000	boot
327	12	4	4A	3	32	460-924300-31500-50500				0.1	U	SITE	STD	9/14/2000	falls (Maciek)
327	12	5	5A	3	33	460-924300-31500-50500				0.1	U	SITE	STD	9/14/2000	shocker
328	20	11	11	5	2	460-924300-31500-50500				1.0	U	SITE	STD	9/14/2000	16.16 open notebook
328	20	12	12	5	3	460-924300-31500-50500				1.0	D	SITE	STD	9/14/2000	16.17 closed notebook
329	20	13	13	5	4	460-924300-31500-50500				2.0	U	SITE	STD	9/24/2000	16.42 cam bag
329	20	14	14	5	5	460-924300-31500-50500				2.0	D	SITE	STD	9/24/2000	16.43 cam bag
330	12	6	6A	3	34	460-924300-31500-52900				1.0	D	SITE	STD	9/14/2000	12.47 Maciek
330	12	7	7A	3	35	460-924300-31500-52900				1.0	U	SITE	STD	9/14/2000	12.47 Mac
332	12	8	8A	3	36	460-924300-31500-52900-1611				1.0	U	SITE	STD	9/14/2000	13.05 (Mac)
332	12	9	9A	3	37	460-924300-31500-52900-1611				1.0	D	SITE	STD	9/14/2000	13.05 (Maciek)
333	14	17	17	3	95	460-924300-31500-57900				2.0	U	SITE	STD	9/16/2000	notebook
333	14	18	18	3	96	460-924300-31500-57900				2.0	D	SITE	STD	9/16/2000	cam bag
334	14	23	23	3	101	460-924300-31500-57900				4.0	U	SITE	STD	9/16/2000	(cam bag)
334	14	24	24	3	102	460-924300-31500-57900				4.0	D	SITE	STD	9/16/2000	(cam bag)
335	14	21	21	3	99			93L.030	30024	1.0	U	SITE	STD	9/16/2000	15.38 boot
335	14	22	22	3	100			93L.030	30024	1.0	D	SITE	STD	9/16/2000	15.38 (dry channel)

**Index of Photos  
(Arranged by Site)**

Site	Roll#	Frame #	Neg #	CD #	Image #	Watershed Code	Gazetted Name	ILPMap	ILP	Reach	Dir	Owner	Focal Length	Date	Comment
336	14	19	19	3	97	460-924300-31500-57900-5115				1.0	U	SITE	STD	9/16/2000	cam bag
336	14	20	20	3	98	460-924300-31500-57900-5115				1.0	D	SITE	STD	9/16/2000	cam bag
337	14	15	15	3	93	460-924300-31500-67300				1.0	U	SITE	STD	9/16/2000	cam bag
337	14	16	16	3	94	460-924300-31500-67300				1.0	D	SITE	STD	9/16/2000	cam bag
338	14	8	8	3	86			93L.029	29044	0.1	U	SITE	STD	9/16/2000	falls in features - Maciek
338	14	9	9	3	87			93L.029	29044	0.1	D	SITE	STD	9/16/2000	vest
338	14	12	12	3	90			93L.029	29044	0.1	X	SITE	STD	9/16/2000	(No scale) fluvium fan damming Foxy C.
339	14	10	10	3	88			93L.029	29044	1.0	U	SITE	STD	9/16/2000	Maciek
339	14	11	11	3	89			93L.029	29044	1.0	D	SITE	STD	9/16/2000	Mac
340	12	14	14A	3	42			93L.029	29048	1.0	U	SITE	STD	9/15/2000	probe
341	12	12	12A	3	40			93L.029	29049	2.0	U	SITE	STD	9/15/2000	cam bag
341	12	13	13A	3	41			93L.029	29049	2.0	D	SITE	STD	9/15/2000	cam bag
342	12	15	15A	3	43			93L.029	29049	5.0	U	SITE	STD	9/15/2000	11.09 boot
342	12	16	16A	3	44			93L.029	29049	5.0	D	SITE	STD	9/15/2000	probe
343	12	17	17A	3	45	460-924300-31500-92300				1.0	U	SITE	STD	9/15/2000	hip chain
343	12	18	18A	3	46	460-924300-31500-92300				1.0	D	SITE	STD	9/15/2000	cam bag
344	12	21	21A	3	49	460-924300-31500-95300				4.0	U	SITE	STD	9/15/2000	probe
344	12	22	22A	3	50	460-924300-31500-95300				4.0	D	SITE	STD	9/15/2000	cam bag
345	12	19	19A	3	47			93L.029	29059	1.0	D	SITE	STD	9/15/2000	Maciek
345	12	20	20A	3	48			93L.029	29059	1.0	U	SITE	STD	9/15/2000	boot
346	12	23	23A	3	51			93L.029	29062	1.0	BD	SITE	STD	9/15/2000	map case
346	12	24	24A	3	52			93L.029	29062	1.0	D	SITE	STD	9/15/2000	cam bag
347	14	3	3	3	81			93L.029	29065	1.0	BD	SITE	STD	9/15/2000	probe
347	14	4	4	3	82			93L.029	29065	1.0	U	SITE	STD	9/15/2000	cam bag
348	18	13	13	4	71			93L.040	40029	1.0	U	SITE	STD	9/23/2000	cam bag
348	18	14	14	4	72			93L.040	40029	1.0	D	SITE	STD	9/23/2000	notebook
349	106	5	5	8	10			93L.040	40032	1.0	BD	SITE	STD	10/19/2000	10.56 boot
349	106	6	6	8	11			93L.040	40032	1.0	U	SITE	STD	10/19/2000	10.58 cam bag
349	106	7	7	8	12			93L.040	40032	1.0	D	SITE	STD	10/19/2000	11.00 cam bag
350	18	12	12	4	70			93L.040	40035	2.0	BD	SITE	STD	9/23/2000	12.52 boot
352	4	1	1A	1	74	460-967000				3.0	D	SITE	STD	9/5/2000	12.16 (Mac)
352	4	2	1	1	75	460-967000				3.0	U	SITE	STD	9/5/2000	12.17 (cam bag)
353	4	6	5	1	79	460-967000				6.1	U	SITE	STD	9/5/2000	15.29 (boot)
353	4	7	6	1	80	460-967000				6.1	D	SITE	STD	9/5/2000	15.29 (cam bag)
353	4	8	7	1	81	460-967000				6.1	U	SITE	STD	9/5/2000	cascade in features (Maciek)
354	4	9	8	1	82	460-967000				7.0	U	SITE	STD	9/5/2000	15.59 (Mac)
355	4	22	22A	1	95	460-967000				9.0	U	SITE	STD	9/6/2000	14.28 boot
355	4	23	23A	1	96	460-967000				9.0	D	SITE	STD	9/6/2000	14.29 cam bag
356	4	20	20A	1	93	460-967000				10.0	D	SITE	STD	9/6/2000	cam bag
356	4	21	21A	1	94	460-967000				10.0	U	SITE	STD	9/6/2000	cam bag (pool)
357	4	10	9	1	83			93L.050	50030	2.0	D	SITE	STD	9/5/2000	(Mac)
359	4	24	24A	1	97			93L.050	50034	3.0	D	SITE	STD	9/5/2000	15.43 cam bag
362	4	3	2	1	76			93L.050	50040	2.0	U	SITE	STD	9/5/2000	13.15 (cam bag)
363	4	4	3	1	77			93L.050	50041	3.0	U	SITE	STD	9/5/2000	13.36 (cam bag)
363	4	5	4	1	78			93L.050	50041	3.0	D	SITE	STD	9/5/2000	13.36 (cam bag)
364	6	7	7	2	7			93L.050	50056	2.0	U	SITE	STD	9/7/2000	14.53 Mac
364	6	8	8	2	8			93L.050	50056	2.0	D	SITE	STD	9/7/2000	14.53 cam bag
365	4	11	11A	1	84			93L.050	50056	8.0	U	SITE	STD	9/6/2000	08.58 cam bag
365	4	12	12A	1	85			93L.050	50056	8.0	D	SITE	STD	9/6/2000	08.58 person
366	4	13	13A	1	86			93L.050	50056	9.1	D	SITE	STD	9/6/2000	10.15 person
366	4	14	14A	1	87			93L.050	50056	9.1	U	SITE	STD	9/6/2000	10.15 pack
366	4	15	15A	1	88			93L.050	50056	9.1	U	SITE	STD	9/6/2000	falls in features (Mac)
367	4	16	16A	1	89			93L.050	50056	10.0	U	SITE	STD	9/6/2000	11.09 person

**Index of Photos  
(Arranged by Site)**

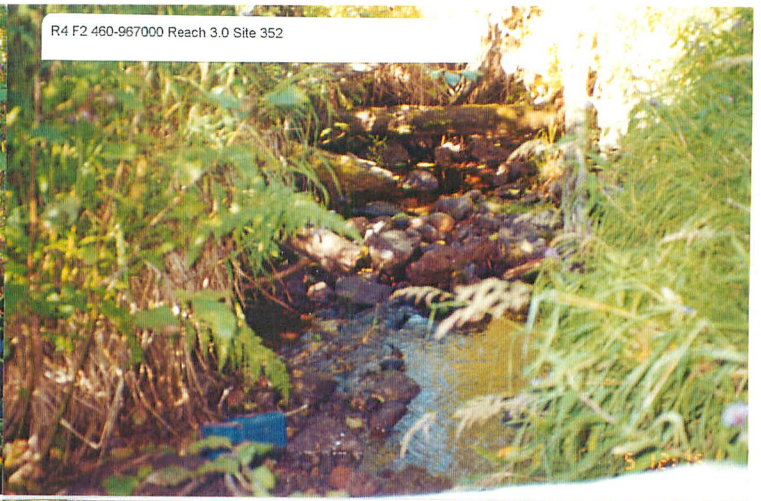
Site	Roll#	Frame #	Neg #	CD #	Image #	Watershed Code	Gazetted Name	ILPMap	ILP	Reach	Dir	Owner	Focal Length	Date	Comment
367	4	17	17A	1	90			93L.050	50056	10.0	D	SITE	STD	9/6/2000	11.09 person
368	4	18	18A	1	91			93L.050	50056	12.0	U	SITE	STD	9/6/2000	12.08 Maciek
368	4	19	19A	1	92			93L.050	50056	12.0	D	SITE	STD	9/6/2000	12.08 Mac
369	30	19	19	7	19			93L.050	50056	14.0	D	SITE	STD	10/6/2000	15.54 boot
369	30	20	20	7	20			93L.050	50056	14.0	U	SITE	STD	10/6/2000	15.54 map case
370	30	21	21	7	21			93L.050	50056	17.0	U	SITE	STD	10/6/2000	probe
371	5	5	5A	1	104			93L.050	50066	1.0	BD	SITE	STD	9/7/2000	(probe)
372	4	26	26A	1	99			93L.050	50068	2.0	BD	SITE	STD	9/7/2000	(boot)
373	6	2	2	2	2			93L.050	50068	6.0	BD	SITE	STD	9/7/2000	11.23 cam bag
374	6	1	1	2	1			93L.050	50070	1.0	BD	SITE	STD	9/7/2000	11.10 boot
375	6	5	5	2	5			93L.050	50073	2.0	U	SITE	STD	9/7/2000	12.32 person
377	6	16	16	2	16			93L.050	50078	1.0	D	SITE	STD	9/8/2000	10.21 cambag
378	6	6	6	2	6			93L.050	50078	3.0	D	SITE	STD	9/7/2000	13.52 (No scale)
379	6	13	13	2	13			93L.050	50082	2.0	U	SITE	STD	9/8/2000	09.21 cam bag



R4 F1 460-967000 Reach 3.0 Site 352



R4 F2 460-967000 Reach 3.0 Site 352



R4 F3 ILP 50040 Reach 2.0 Site 362



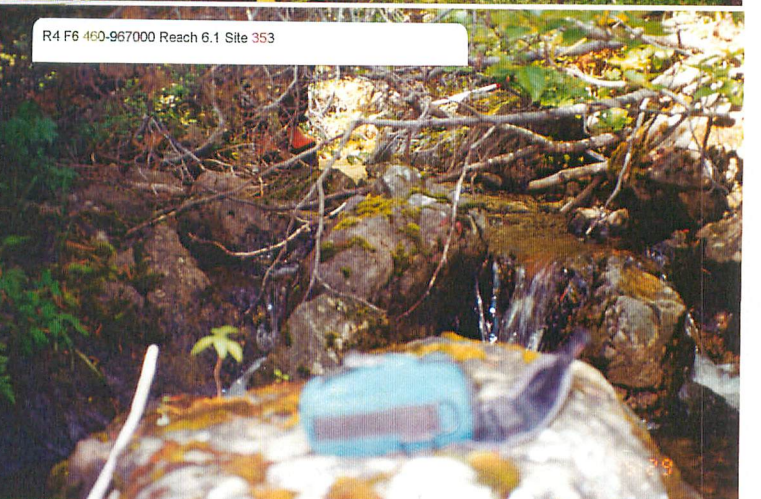
R4 F4 ILP 50041 Reach 3.0 Site 363



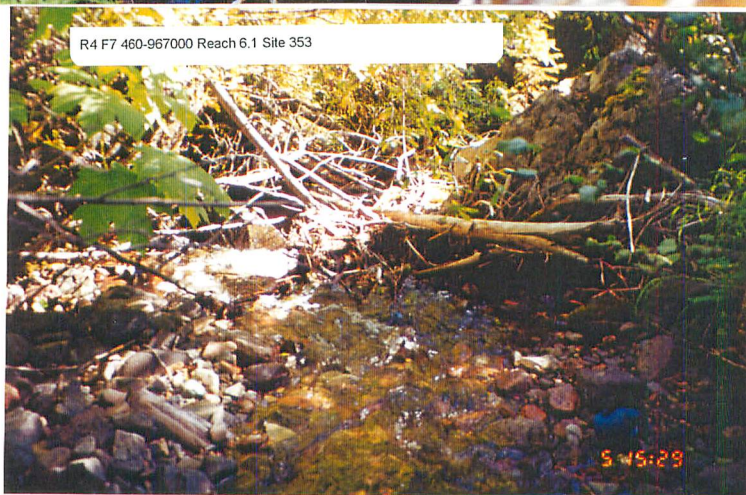
R4 F5 ILP 50041 Reach 3.0 Site 363



R4 F6 460-967000 Reach 6.1 Site 353



R4 F7 460-967000 Reach 6.1 Site 353





R4 F8 460-967000 Reach 6.1 Site 353



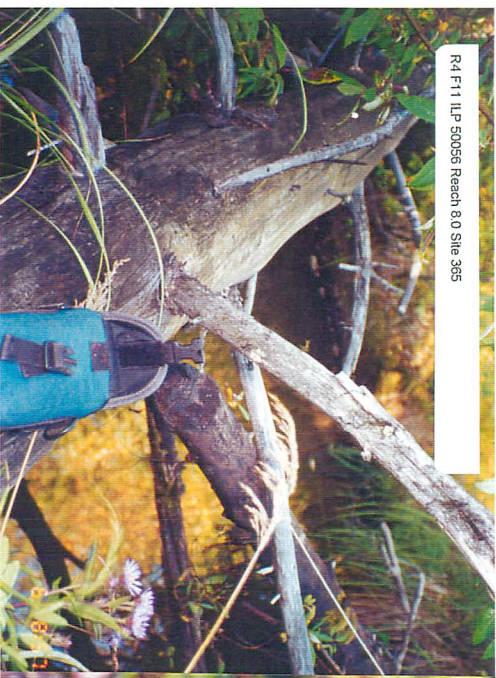
R4 F9 460-967000 Reach 7.0 Site 354



R4 F10 500300 Reach 2.0 Site 357



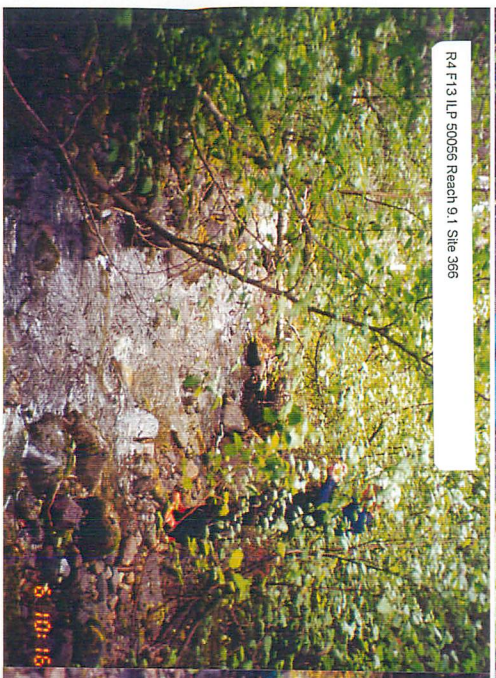
R4 F12 500356 Reach 8.0 Site 365



R4 F11 500356 Reach 8.0 Site 365



R4 F14 500356 Reach 9.1 Site 366



R4 F13 500356 Reach 9.1 Site 366

R4 F15 ILP 50056 Reach 9.1 Site 366



R4 F16 ILP 50056 Reach 10.0 Site 367



R4 F17 ILP 50056 Reach 10.0 Site 367



R4 F18 ILP 50056 Reach 12.0 Site 368



R4 F19 ILP 50056 Reach 12.0 Site 368



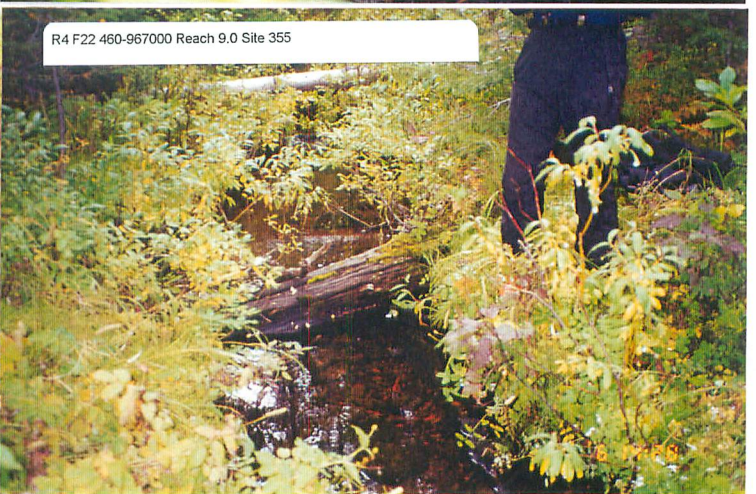
R4 F20 460-967000 Reach 10.0 Site 356



R4 F21 460-967000 Reach 10.0 Site 356



R4 F22 460-967000 Reach 9.0 Site 355



R4 F23 460-967000 Reach 9.0 Site 355



R4 F24 ILP 50034 Reach 3.0 Site 359



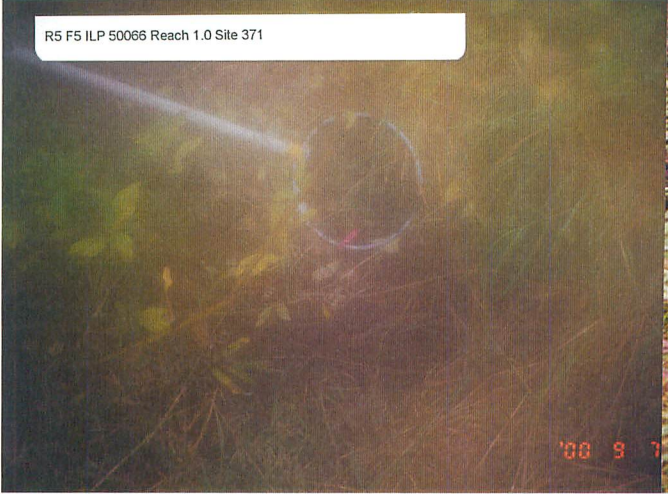
R4 F25 ILP 50026 Reach 1.0 Site 276



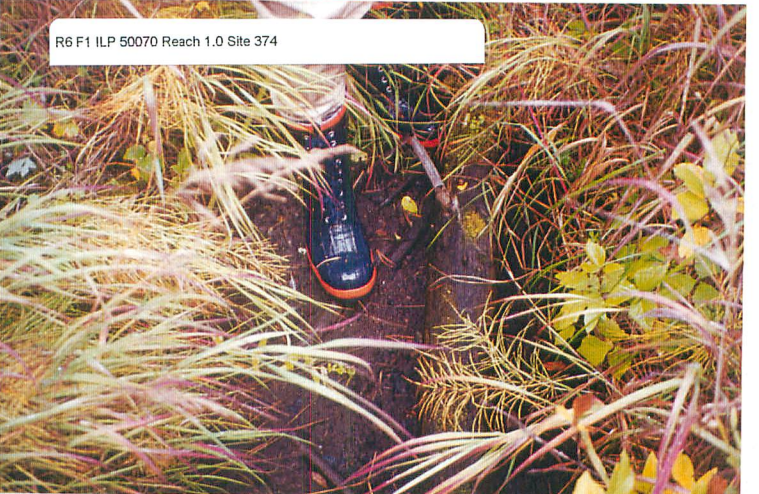
R4 F26 ILP 50068 Reach 2.0 Site 372



R5 F5 ILP 50066 Reach 1.0 Site 371



R6 F1 ILP 50070 Reach 1.0 Site 374



R6 F2 ILP 50068 Reach 6.0 Site 373

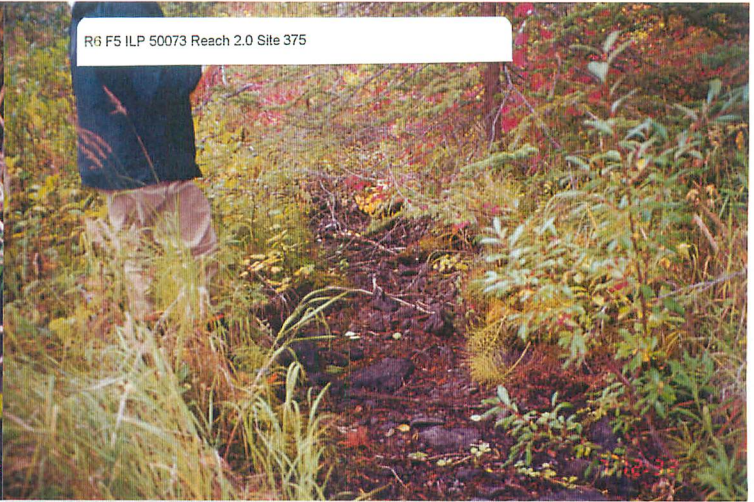


R6 F3 460-000000 Reach 12.0 Site 188

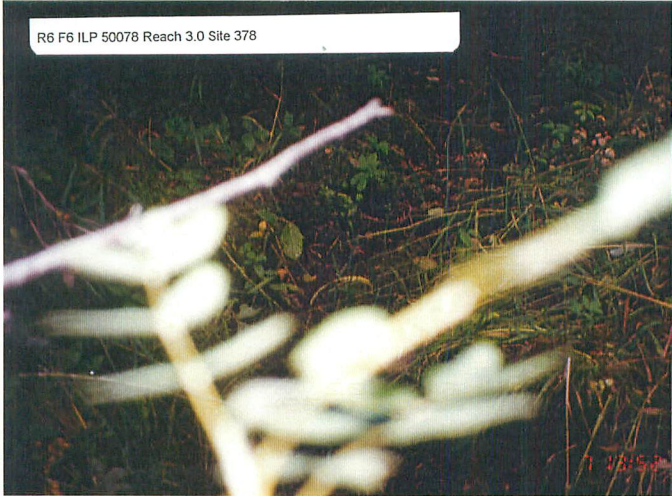




R6 F4 460-000000 Reach 12.0 Site 188



R6 F5 ILP 50073 Reach 2.0 Site 375



R6 F6 ILP 50078 Reach 3.0 Site 378



R6 F7 ILP 50056 Reach 2.0 Site 364



R6 F8 ILP 50056 Reach 2.0 Site 364



R6 F9 460-000000 Reach 9.0 Site 187



R6 F10 460-000000 Reach 9.0 Site 187



R6 F11 460-000000 Reach 9.0 Site 187



R6 F12 460-000000 Reach 21.0 Site 190



R6 F13 ILP 50082 Reach 2.0 Site 379



R6 F14 460-000000 Reach 17.0 Site 189



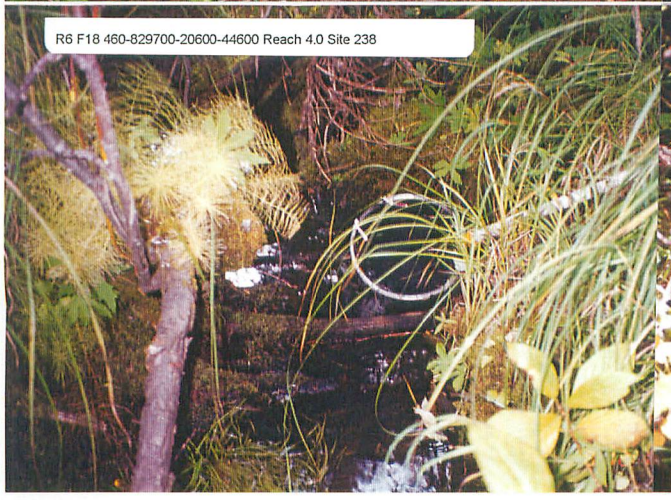
R6 F15 460-000000 Reach 17.0 Site 189



R6 F16 ILP 50078 Reach 1.0 Site 377



R6 F17 460-829700-20600-44600 Reach 4.0 Site 238



R6 F18 460-829700-20600-44600 Reach 4.0 Site 238



R6 F19 460-829700-20600-44600 Reach 7.0 Site 239

R6 F20 ILP 50020 Reach 2.0 Site 241



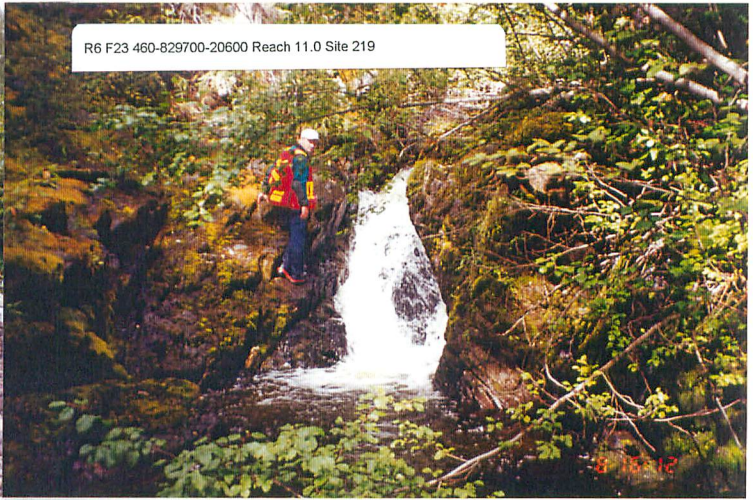
R6 F21 460-829700-20600 Reach 8.0 Site 218



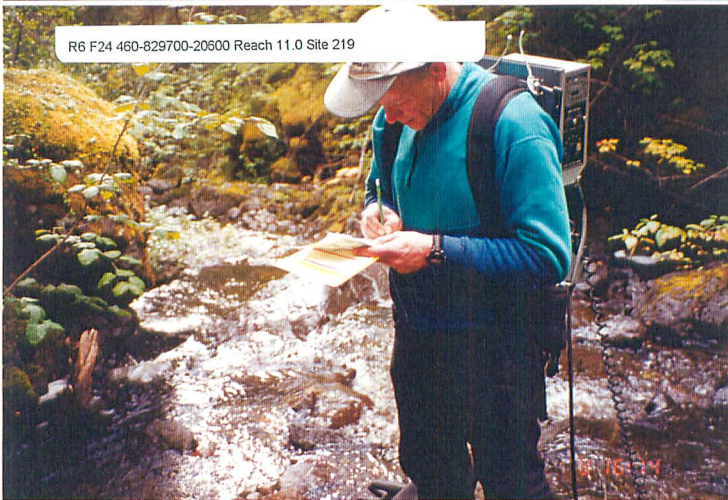
R6 F22 460-829700-20600 Reach 8.0 Site 218



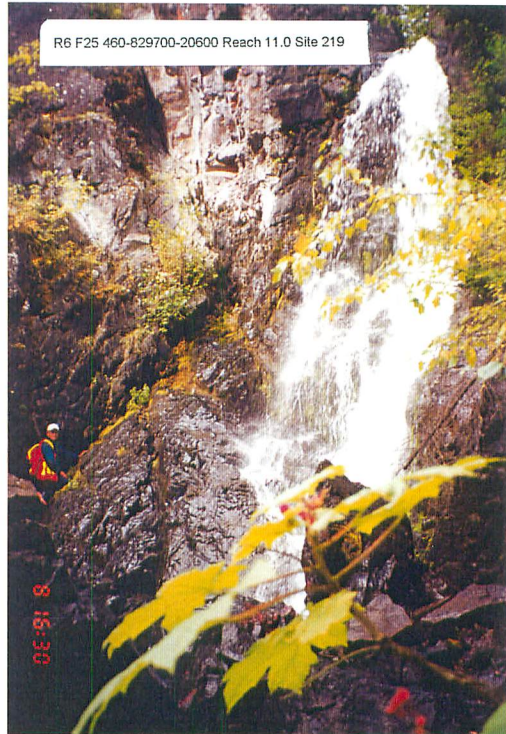
R6 F23 460-829700-20600 Reach 11.0 Site 219



R6 F24 460-829700-20600 Reach 11.0 Site 219



R6 F25 460-829700-20600 Reach 11.0 Site 219



R6 F1 460-829700-20600 Reach 12.0 Site 220





R8 F2 460-829700-20600 Reach 12.0 Site 220



R8 F3 ILP 50014 Reach 4.0 Site 240



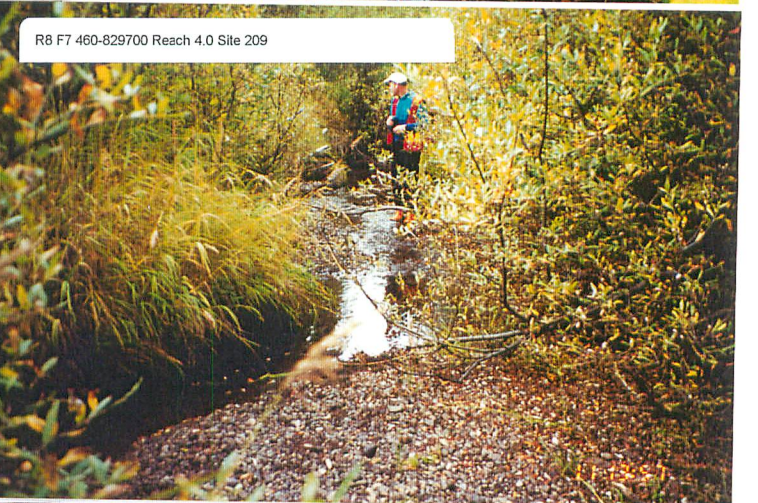
R8 F4 ILP 49007 Reach 1.0 Site 246



R8 F5 ILP 49007 Reach 1.0 Site 246



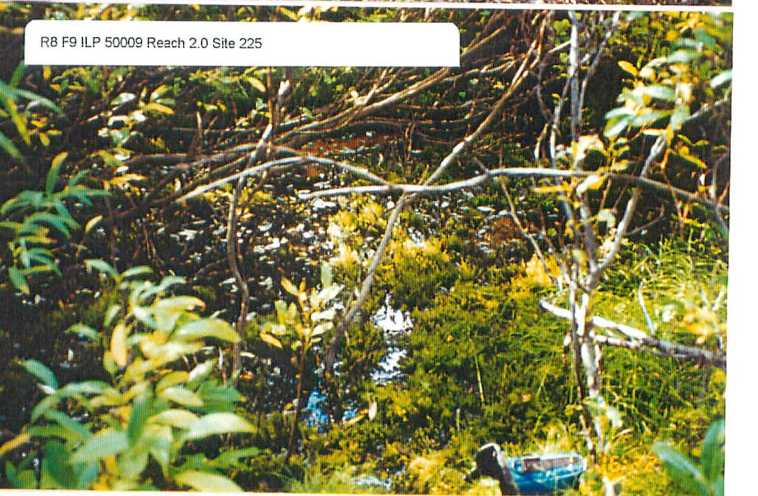
R8 F6 460-829700 Reach 4.0 Site 209



R8 F7 460-829700 Reach 4.0 Site 209



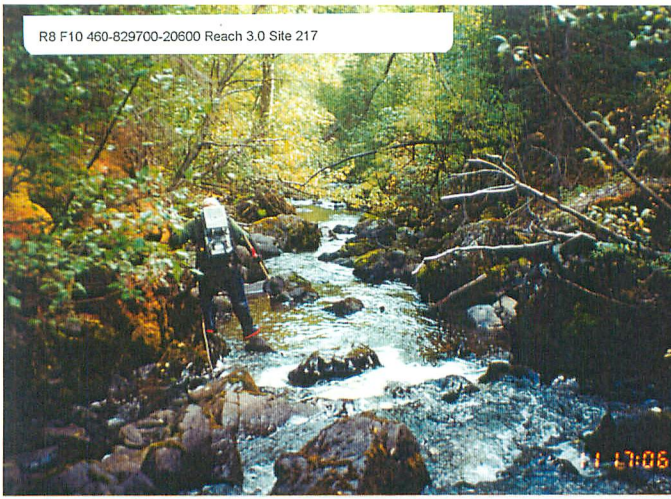
R8 F8 ILP 50007 Reach 1.0 Site 224



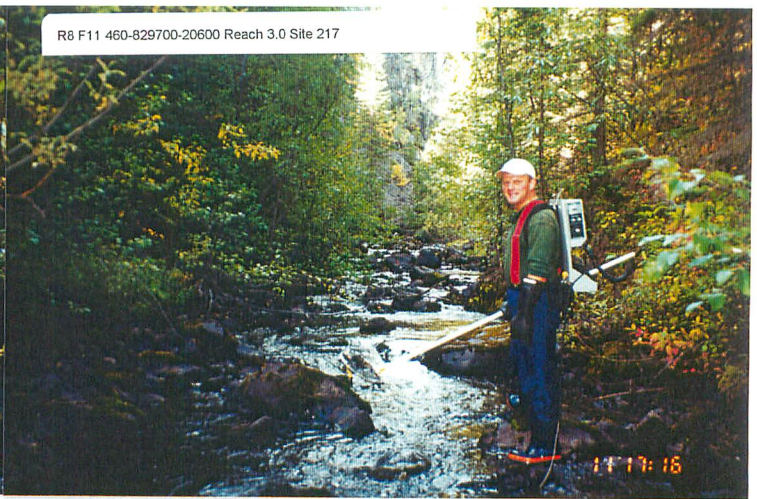
R8 F9 ILP 50009 Reach 2.0 Site 225



R8 F10 460-829700-20600 Reach 3.0 Site 217



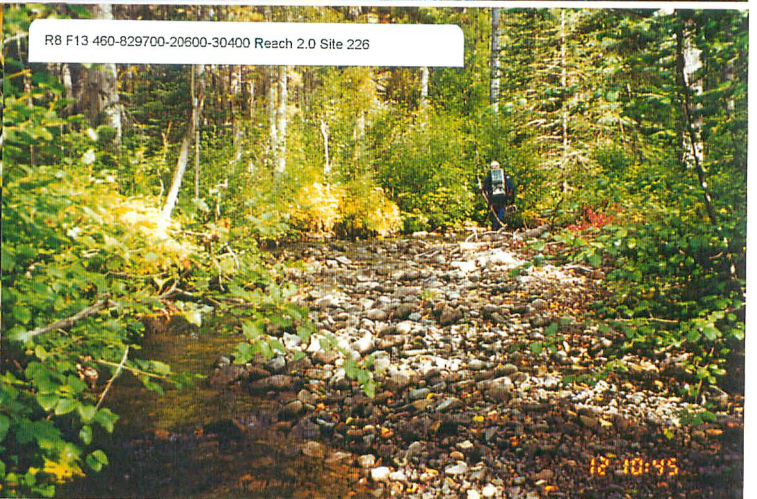
R8 F11 460-829700-20600 Reach 3.0 Site 217



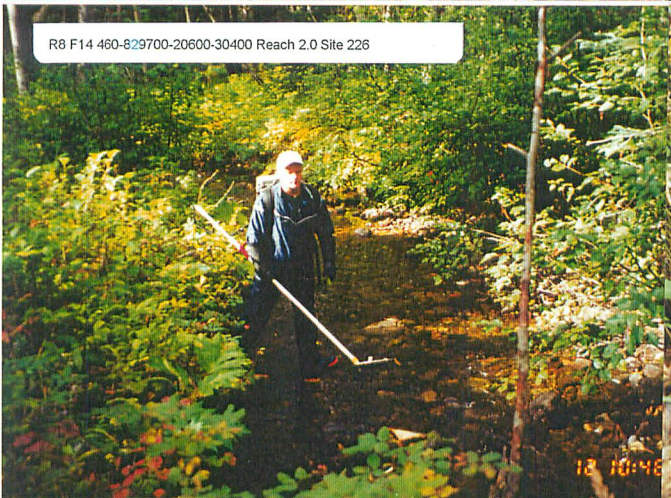
R8 F12 ILP 50010 Reach 3.0 Site 237



R8 F13 460-829700-20600-30400 Reach 2.0 Site 226



R8 F14 460-829700-20600-30400 Reach 2.0 Site 226



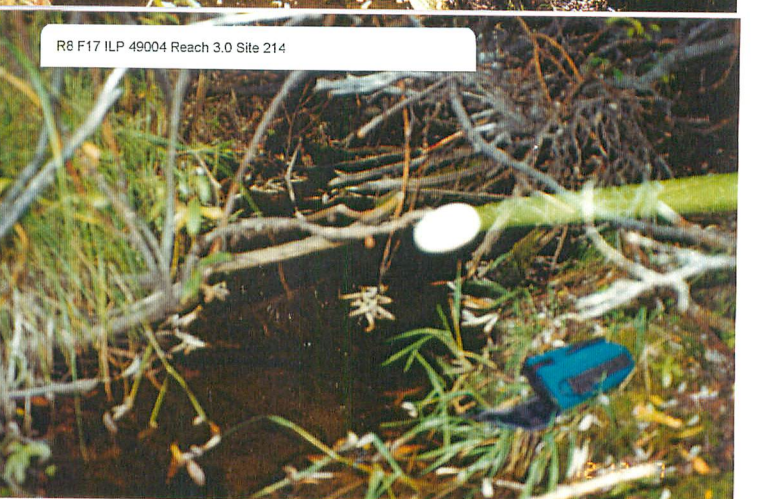
R8 F15 ILP 50001 Reach 1.0 Site 215



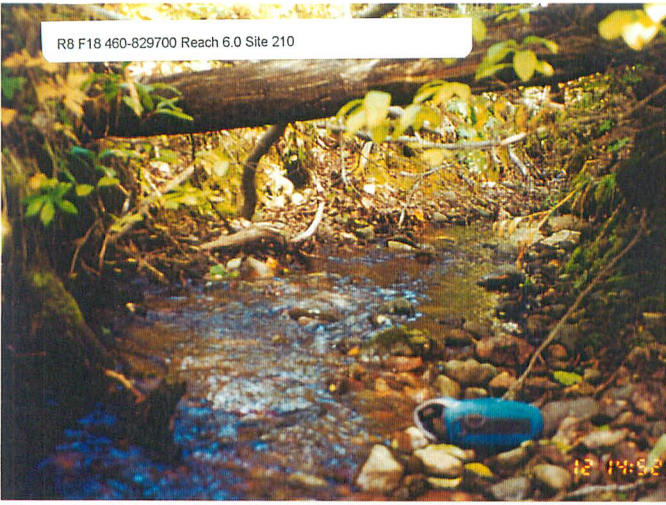
R8 F16 ILP 49004 Reach 3.0 Site 214



R8 F17 ILP 49004 Reach 3.0 Site 214



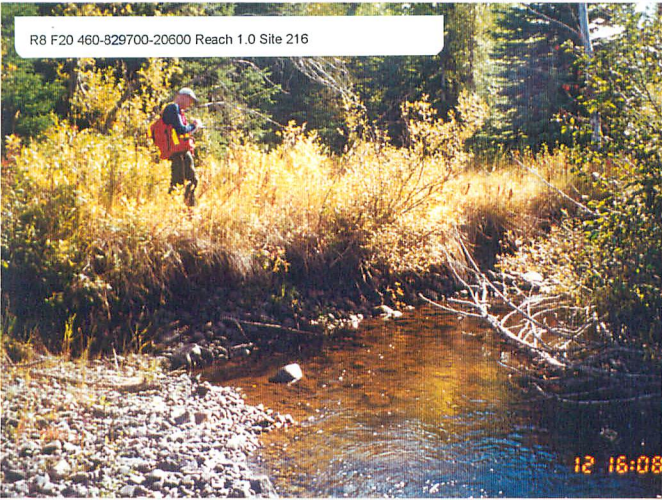
R8 F18 460-829700 Reach 6.0 Site 210



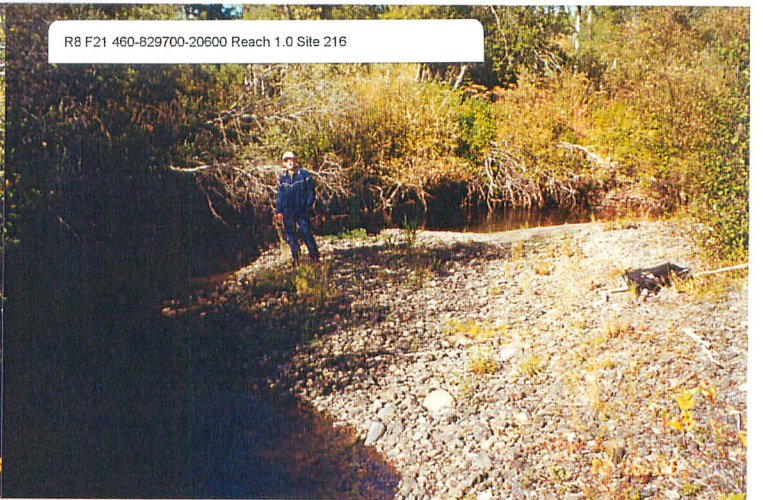
R8 F19 460-829700 Reach 6.0 Site 210



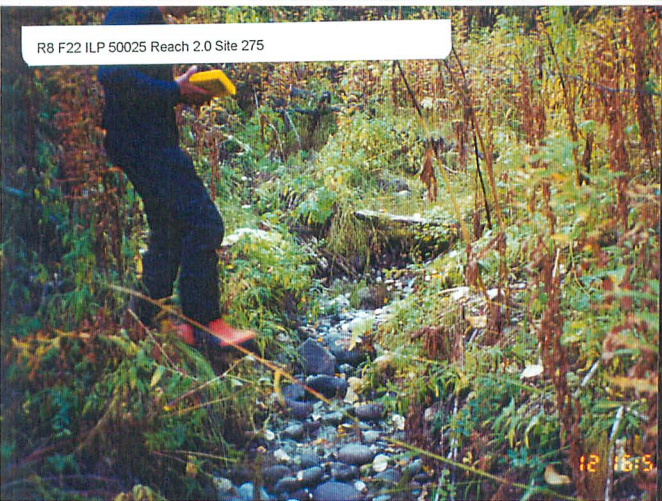
R8 F20 460-829700-20600 Reach 1.0 Site 216



R8 F21 460-829700-20600 Reach 1.0 Site 216



R8 F22 ILP 50025 Reach 2.0 Site 275



R8 F23 ILP 50025 Reach 2.0 Site 275

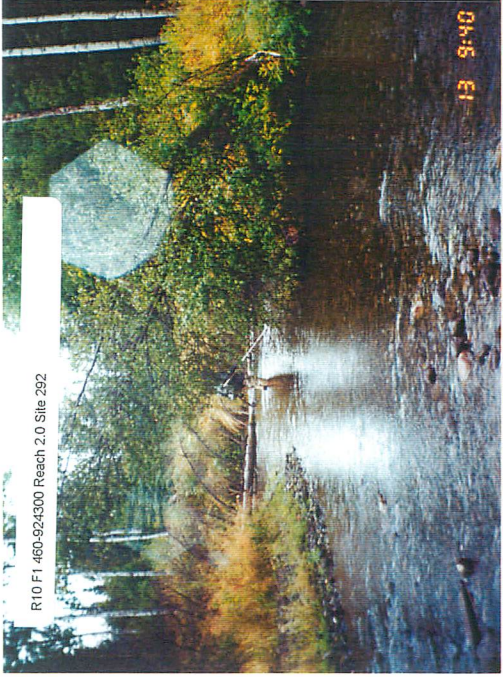


R8 F24 460-000000 Reach 1.0 Site 185



R8 F25 460-000000 Reach 1.0 Site 185





R10 F1 460-924300 Reach 2.0 Site 292



R10 F2 460-924300 Reach 2.0 Site 292



R10 F3 460-924300-31500 Reach 2.0 Site 301



R10 F4 460-924300-31500 Reach 2.0 Site 301



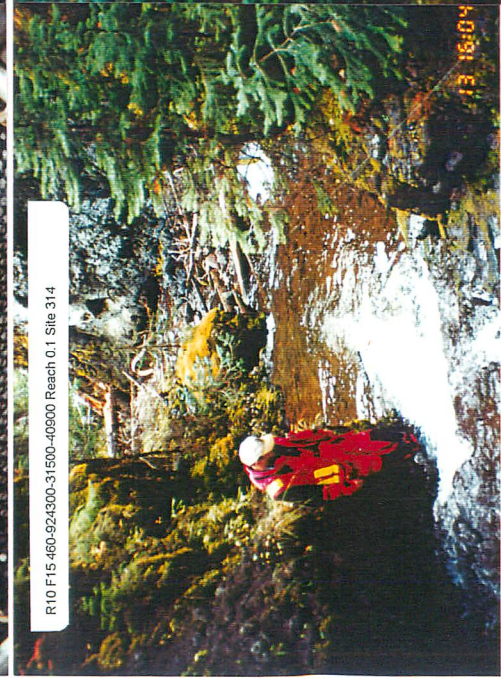
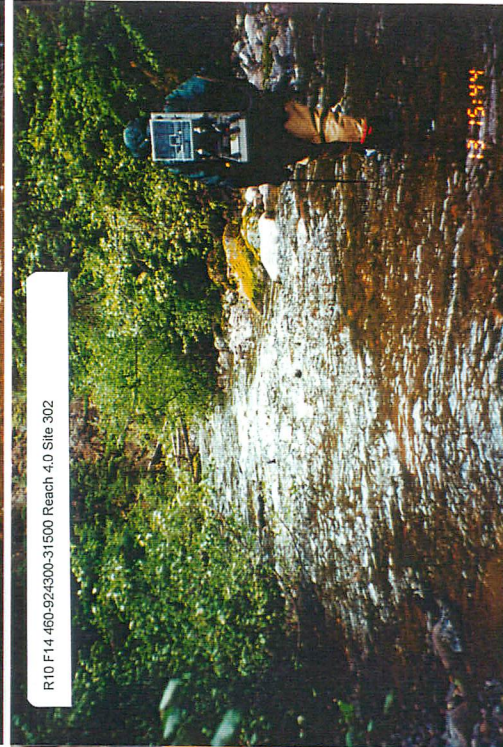
R10 F5 460-924300-31500 Reach 4.0 Site 302

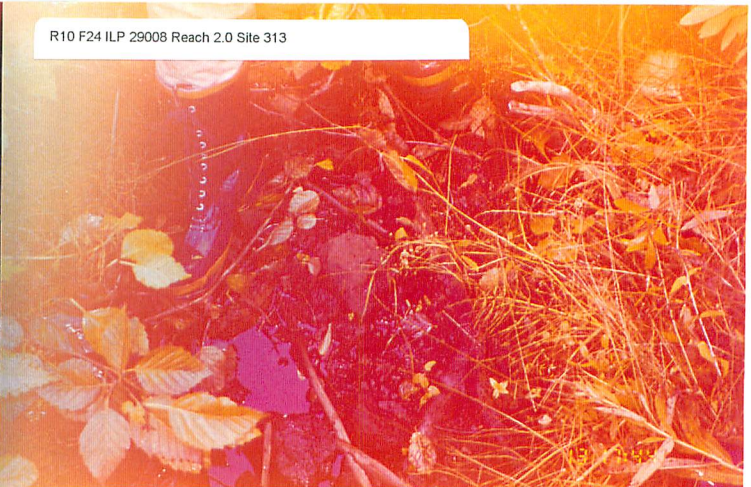
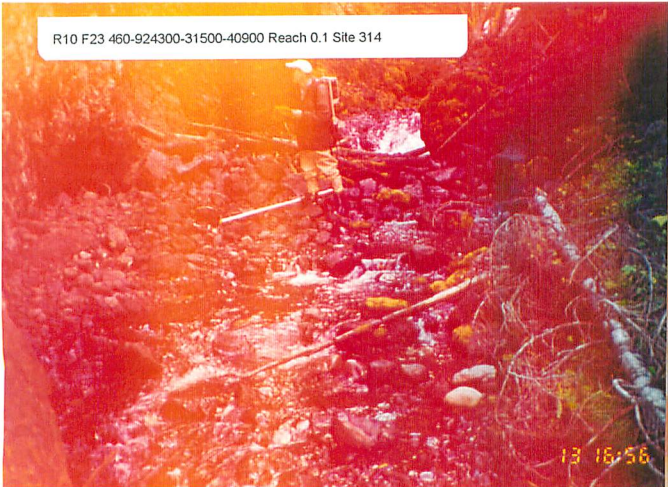
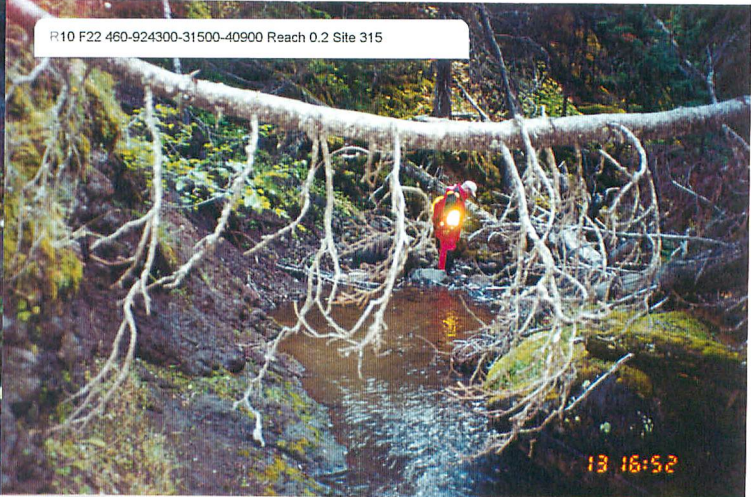


R10 F6 460-924300-31500 Reach 4.0 Site 302



R10 F9 ILP 30009 Reach 1.0 Site 306





R12 F1 ILP 29027 Reach 0.1 Site 324



R12 F2 ILP 29027 Reach 0.1 Site 324



R12 F3 ILP 29027 Reach 0.1 Site 324



R12 F4 460-924300-31500-50500 Reach 0.1 Site 327



R12 F5 460-924300-31500-50500 Reach 0.1 Site 327

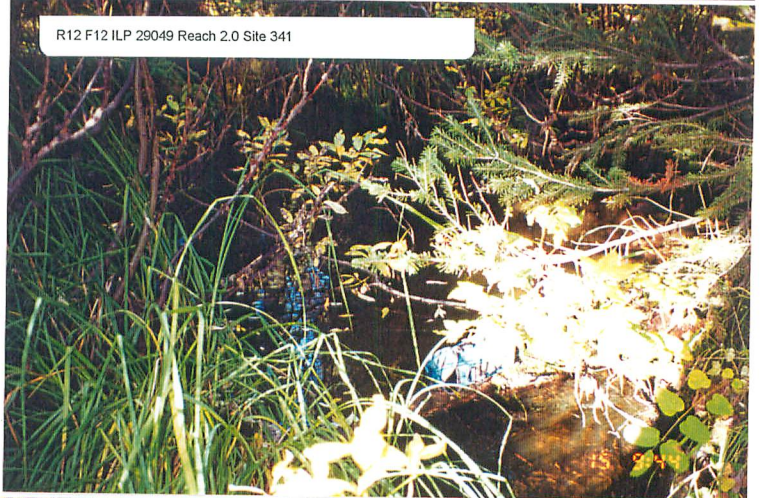
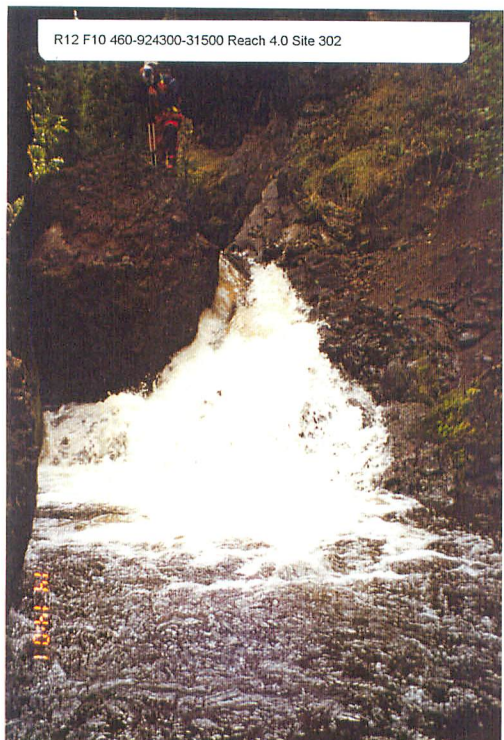
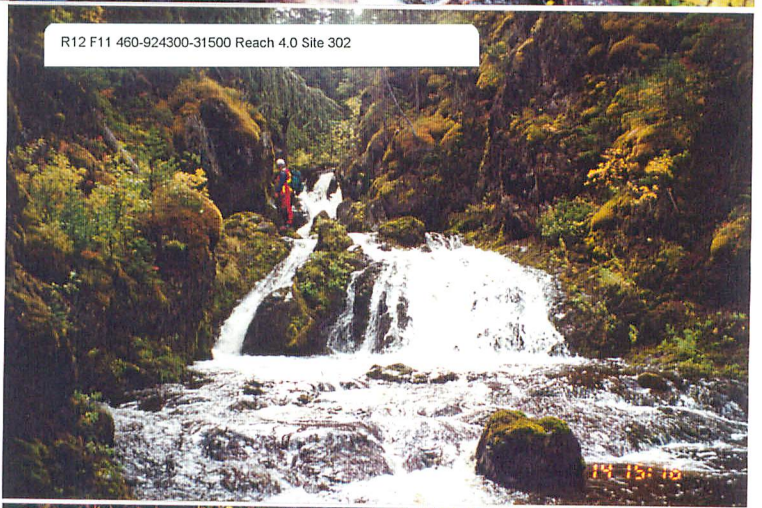


R12 F6 460-924300-31500-52900 Reach 1.0 Site 330



R12 F7 460-924300-31500-52900 Reach 1.0 Site 330







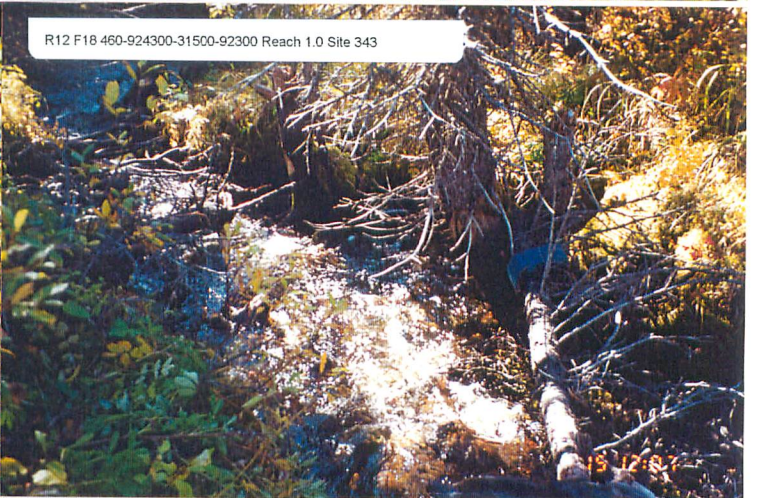
R12 F15 ILP 29049 Reach 5.0 Site 342



R12 F16 ILP 29049 Reach 5.0 Site 342



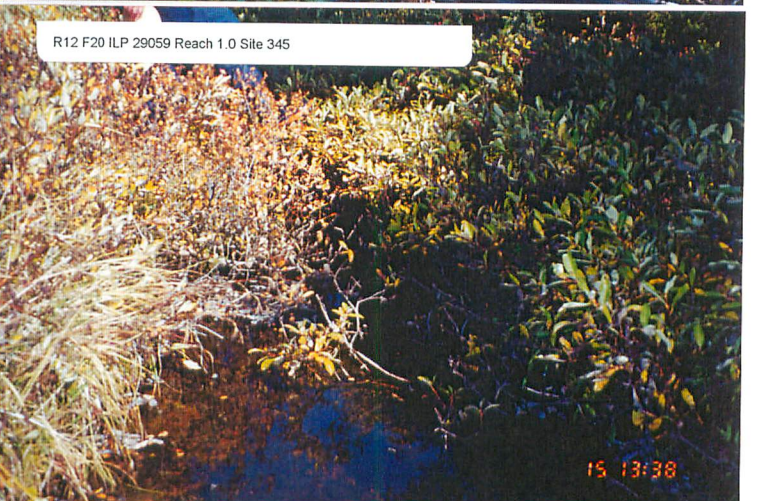
R12 F17 460-924300-31500-92300 Reach 1.0 Site 343



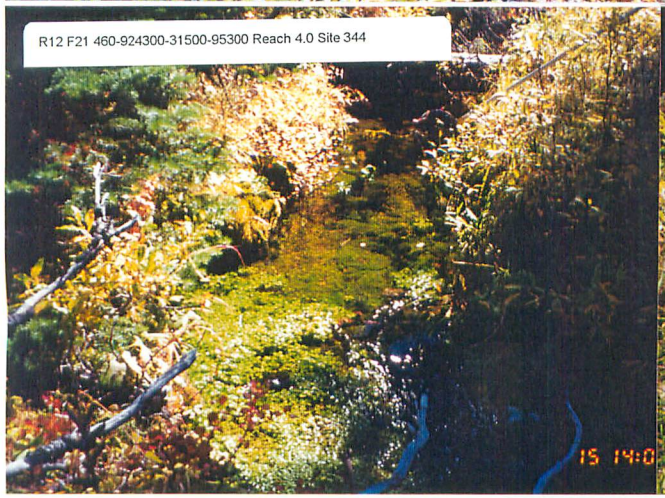
R12 F18 460-924300-31500-92300 Reach 1.0 Site 343



R12 F19 ILP 29059 Reach 1.0 Site 345



R12 F20 ILP 29059 Reach 1.0 Site 345



R12 F21 460-924300-31500-95300 Reach 4.0 Site 344



R12 F22 460-924300-31500-95300 Reach 4.0 Site 344



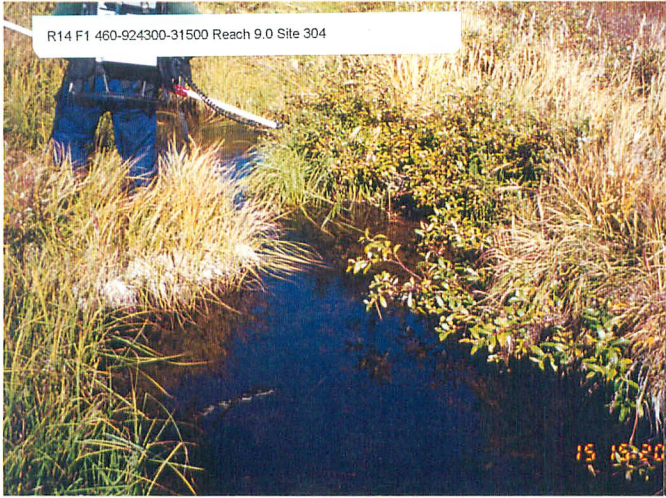
R12 F23 ILP 29062 Reach 1.0 Site 346



R12 F24 ILP 29062 Reach 1.0 Site 346



R14 F1 460-924300-31500 Reach 9.0 Site 304



R14 F2 460-924300-31500 Reach 9.0 Site 304



R14 F3 ILP 29065 Reach 1.0 Site 347



R14 F4 ILP 29065 Reach 1.0 Site 347



R14 F5 460-924300-31500-40900 Reach 4.0 Site 316



R14 F6 460-924300-31500-40900 Reach 4.0 Site 316



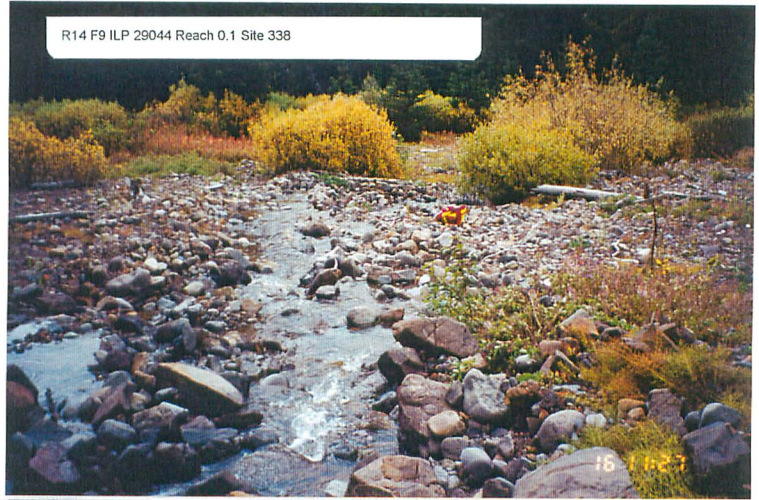
R14 F7 460-924300-31500-40900 Reach 4.0 Site 316



R14 F8 ILP 29044 Reach 0.1 Site 338



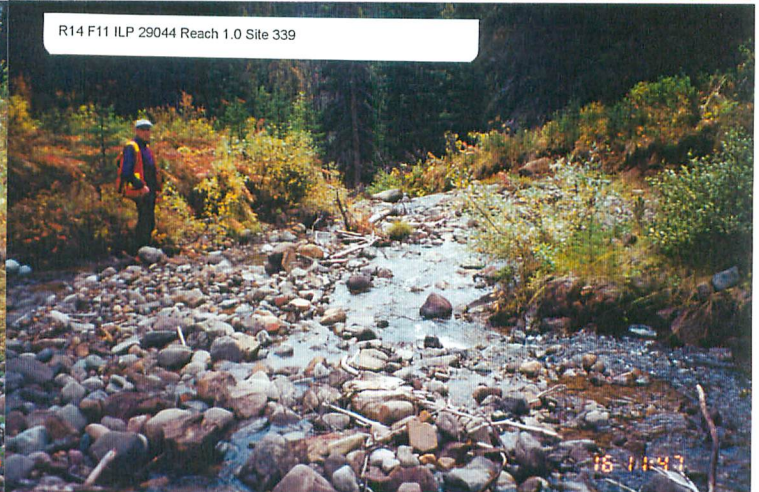
R14 F9 ILP 29044 Reach 0.1 Site 338



R14 F10 ILP 29044 Reach 1.0 Site 339



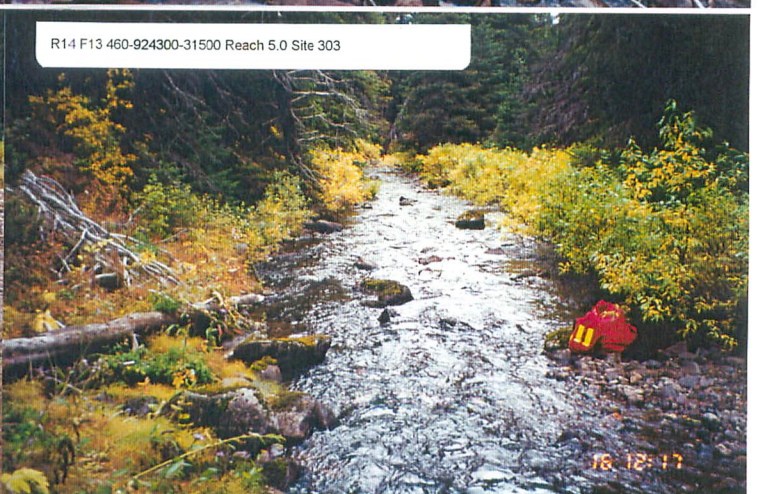
R14 F11 ILP 29044 Reach 1.0 Site 339



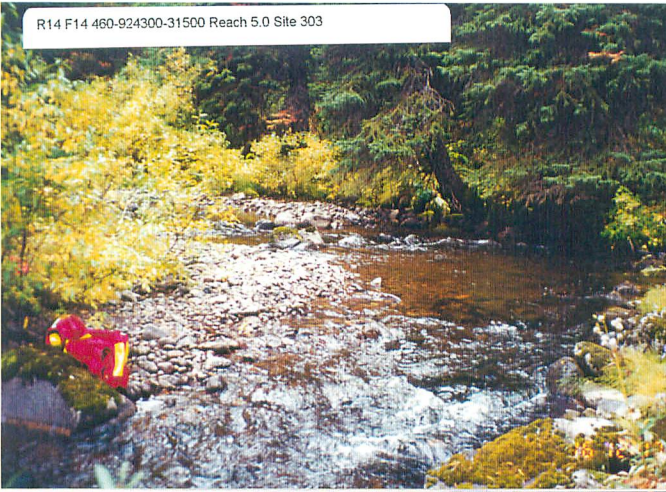
R14 F12 ILP 29044 Reach 0.1 Site 338



R14 F13 460-924300-31500 Reach 5.0 Site 303



R14 F14 460-924300-31500 Reach 5.0 Site 303



R14 F15 460-924300-31500-67300 Reach 1.0 Site 337



R14 F16 460-924300-31500-67300 Reach 1.0 Site 337



R14 F17 460-924300-31500-57900 Reach 2.0 Site 333



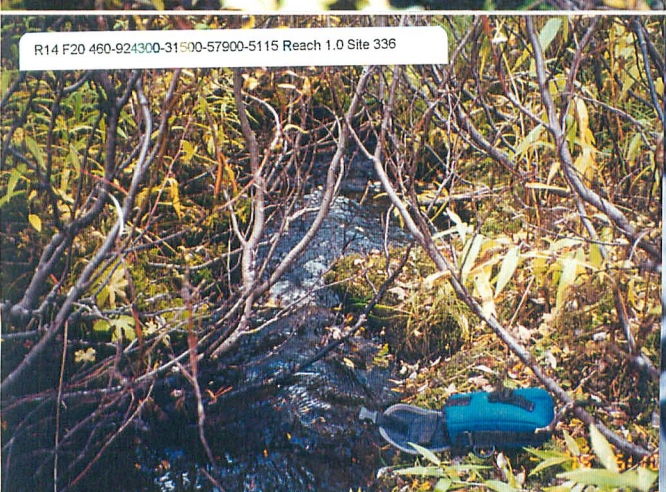
R14 F18 460-924300-31500-57900 Reach 2.0 Site 333



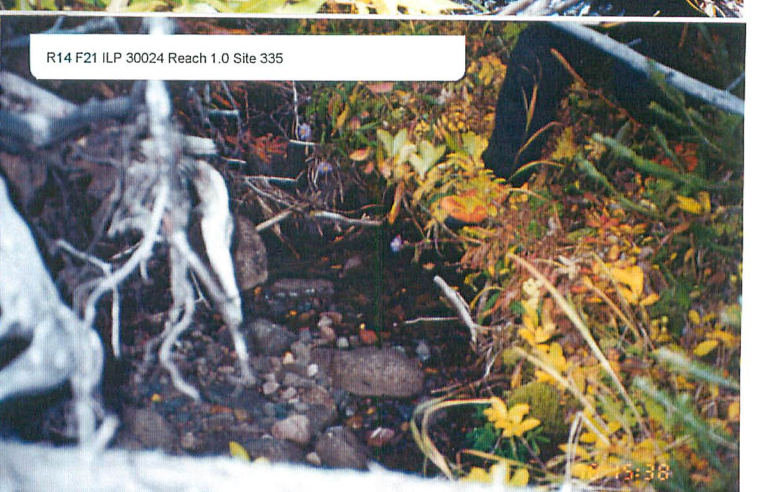
R14 F19 460-924300-31500-57900-5115 Reach 1.0 Site 336



R14 F20 460-924300-31500-57900-5115 Reach 1.0 Site 336



R14 F21 ILP 30024 Reach 1.0 Site 335





R14 F22 ILP 30024 Reach 1.0 Site 335

16 16:38



R14 F23 460-924300-31500-57900 Reach 4.0 Site 334

16 16:05



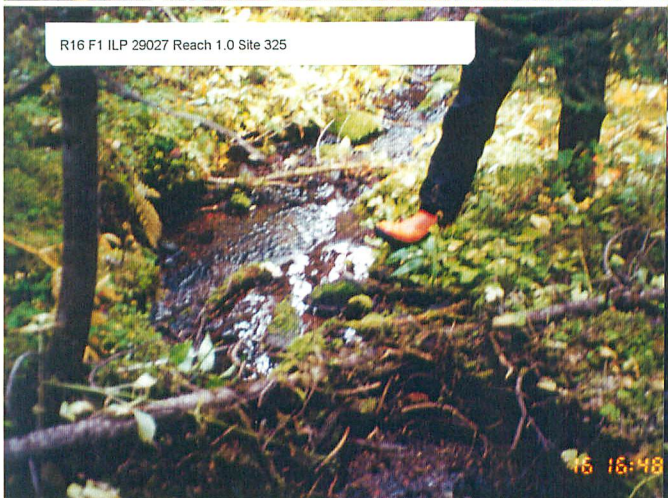
R14 F24 460-924300-31500-57900 Reach 4.0 Site 334

16 16:05



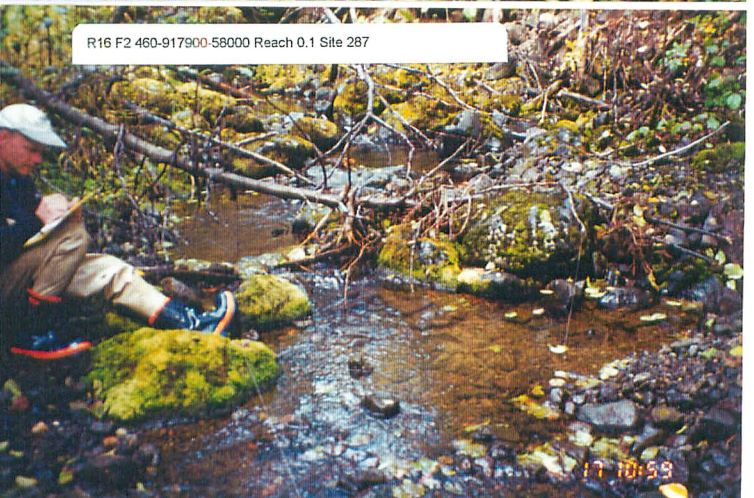
R14 F25 ILP 29027 Reach 1.0 Site 325

16 16:15



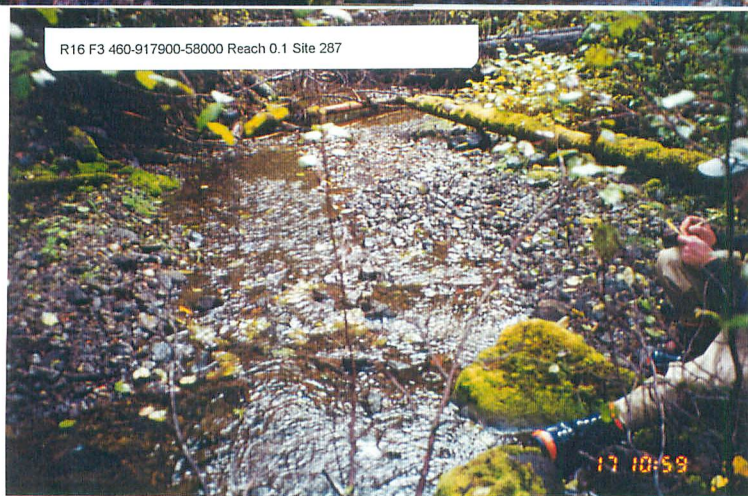
R16 F1 ILP 29027 Reach 1.0 Site 325

16 16:48



R16 F2 460-917900-58000 Reach 0.1 Site 287

17 10:59



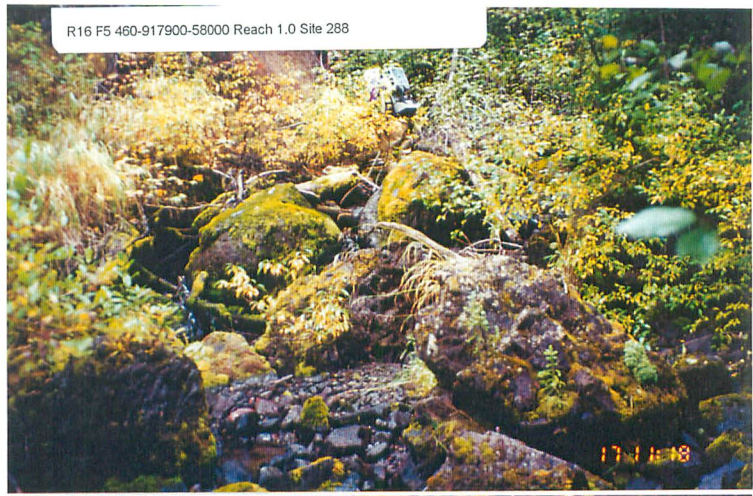
R16 F3 460-917900-58000 Reach 0.1 Site 287

17 10:59

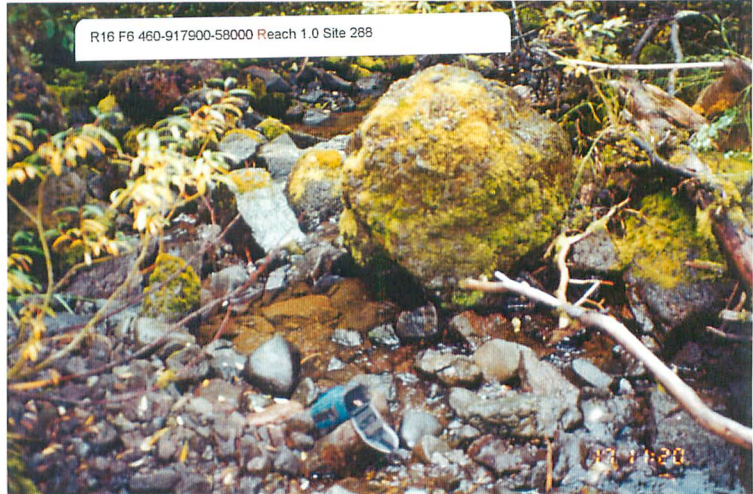
R16 F4 460-917900-58000 Reach 0.1 Site 287



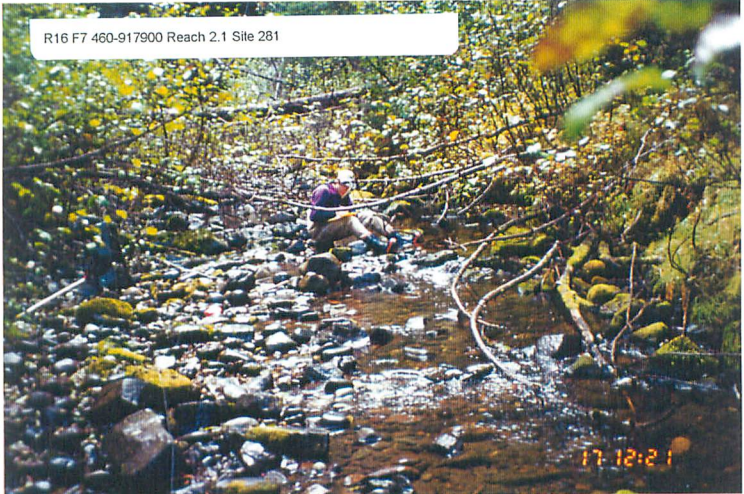
R16 F5 460-917900-58000 Reach 1.0 Site 288



R16 F6 460-917900-58000 Reach 1.0 Site 288



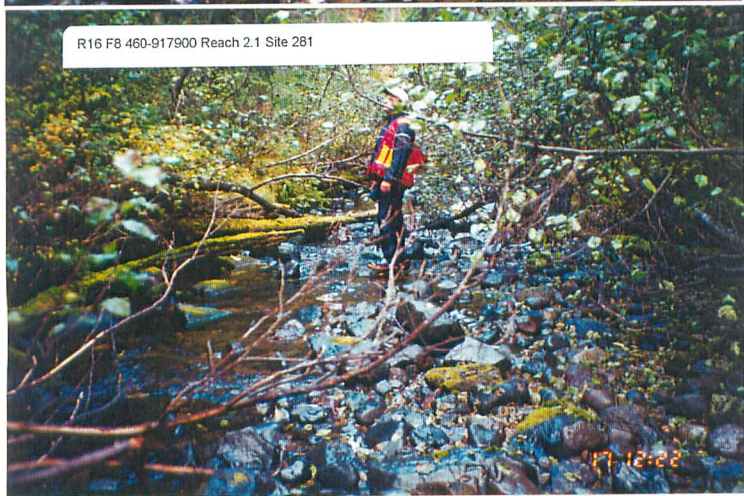
R16 F7 460-917900 Reach 2.1 Site 281

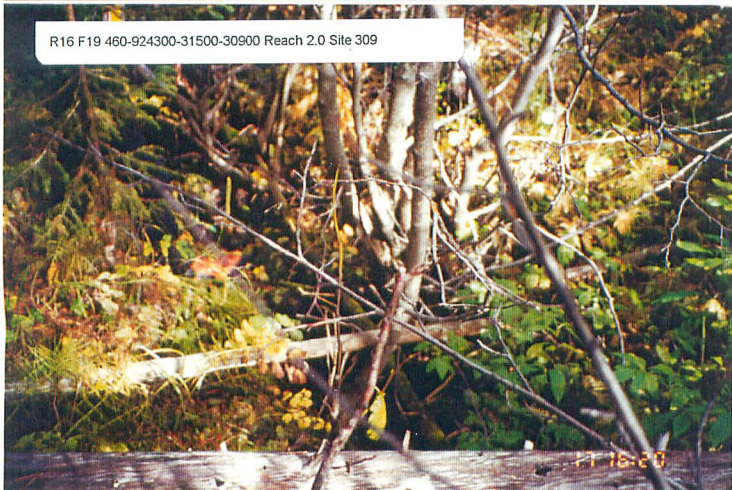
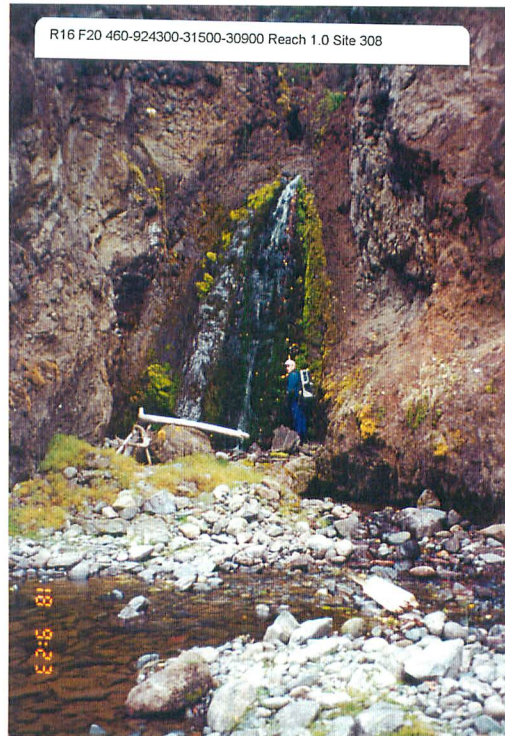
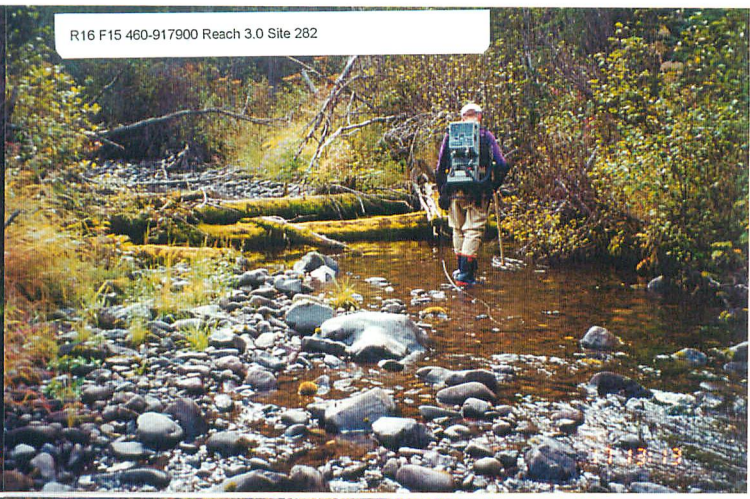
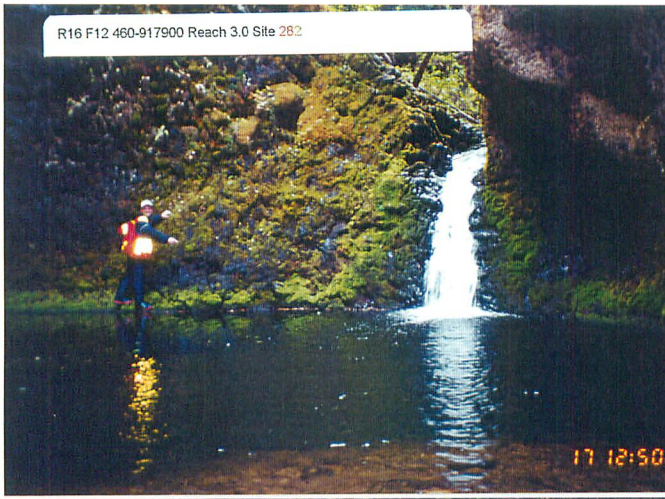


R16 F9 460-917900 Reach 2.1 Site 281

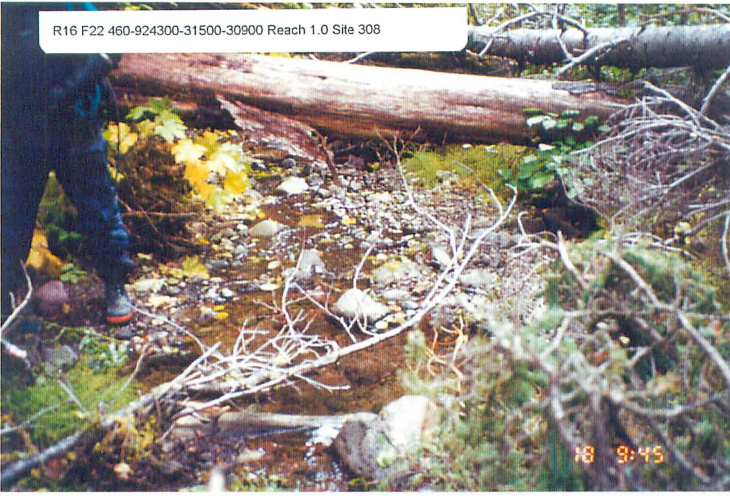


R16 F8 460-917900 Reach 2.1 Site 281





R16 F22 460-924300-31500-30900 Reach 1.0 Site 308



R16 F24 460-924300-31500-30900 Reach 1.0 Site 308



R16 F23 460-924300-31500-30900 Reach 1.0 Site 308



R18 F1 460-917900 Reach 4.0 Site 283



R16 F25 460-924300-31500-30900 Reach 1.0 Site 308



R18 F2 460-917900 Reach 4.0 Site 283





R18 F3 460-917900 Reach 6.0 Site 284



R18 F4 460-917900-73600 Reach 1.0 Site 291



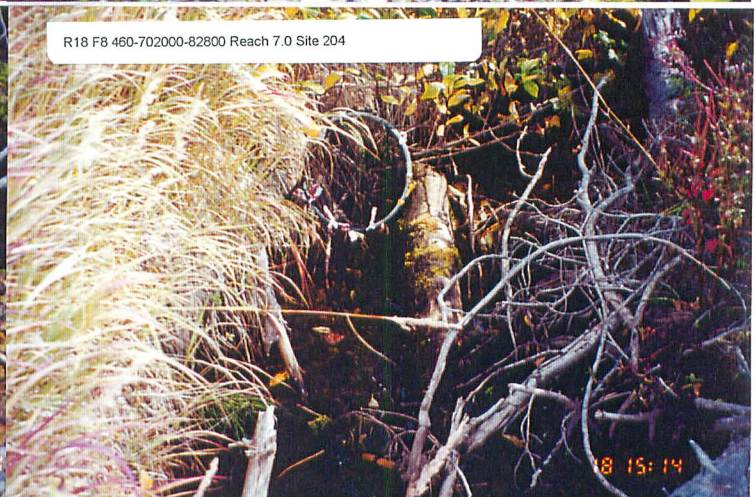
R18 F5 460-917900-73600 Reach 1.0 Site 291



R18 F6 460-917900-58000 Reach 4.0 Site 290



R18 F7 460-917900-58000 Reach 4.0 Site 290



R18 F8 460-702000-82800 Reach 7.0 Site 204



R18 F9 ILP 39016 Reach 1.0 Site 207

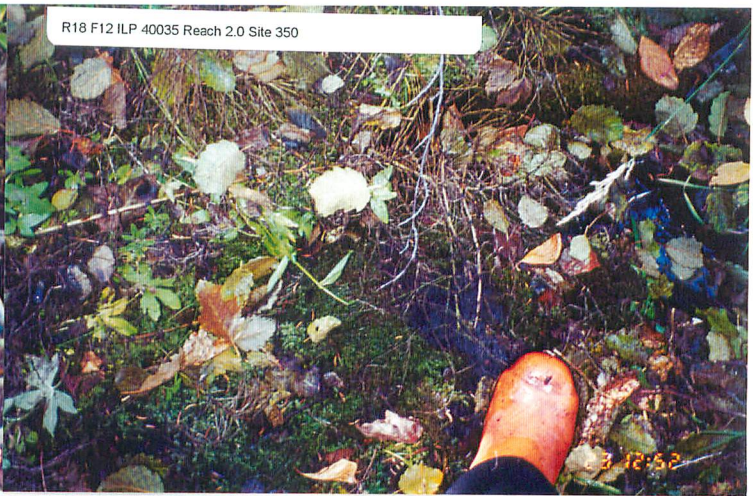


R18 F10 460-917900-58000 Reach 2.0 Site 289





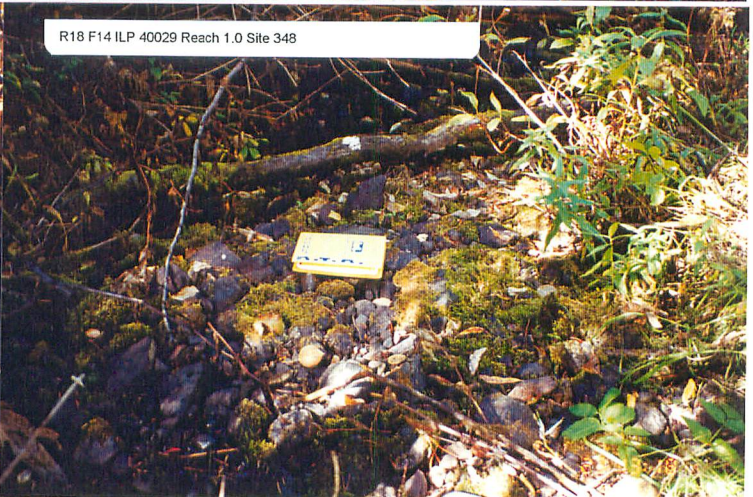
R18 F11 460-917900-58000 Reach 2.0 Site 289



R18 F12 ILP 40035 Reach 2.0 Site 350



R18 F13 ILP 40029 Reach 1.0 Site 348



R18 F14 ILP 40029 Reach 1.0 Site 348



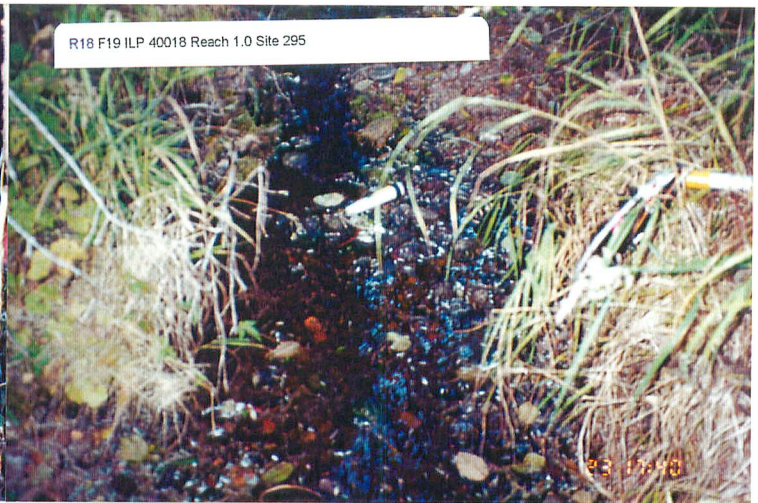
R18 F15 ILP 40016 Reach 1.0 Site 293



R18 F17 ILP 40016 Reach 3.1 Site 294



R18 F16 ILP 40016 Reach 1.0 Site 293



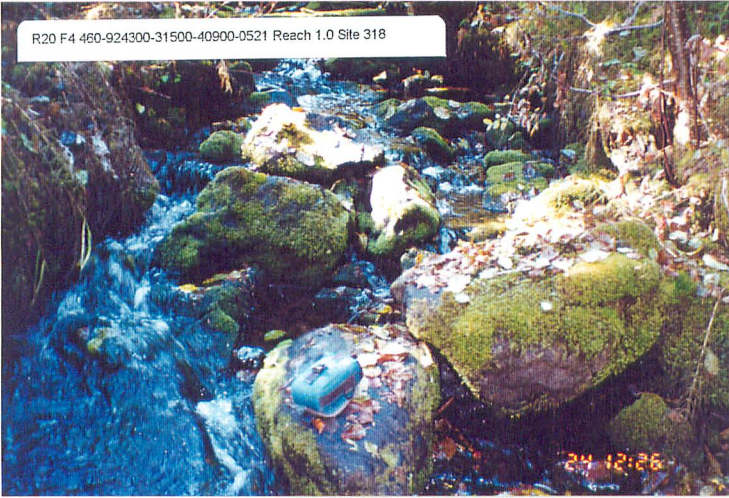
R20 F2 ILP 29006 Reach 1.0 Site 312



R20 F3 460-924300-31500-40900-0521 Reach 1.0 Site 318



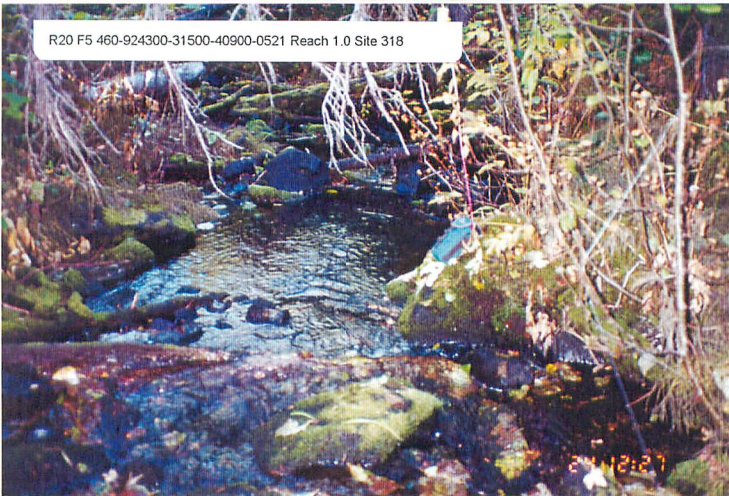
R20 F4 460-924300-31500-40900-0521 Reach 1.0 Site 318



R20 F6 460-924300-31500-40900-0521 Reach 1.0 Site 318



R20 F5 460-924300-31500-40900-0521 Reach 1.0 Site 318



R20 F7 ILP 29009 Reach 1.0 Site 321



R20 F8 ILP 29009 Reach 1.0 Site 321





R20 F9 460-924300-31500-40900-0521 Reach 4.0 Site 319



R20 F10 460-924300-31500-40900-0521 Reach 4.0 Site 319



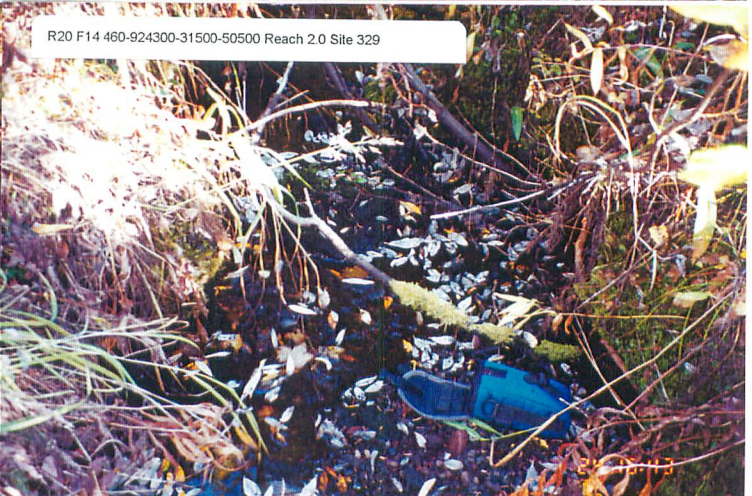
R20 F11 460-924300-31500-50500 Reach 1.0 Site 328



R20 F12 460-924300-31500-50500 Reach 1.0 Site 328



R20 F13 460-924300-31500-50500 Reach 2.0 Site 329



R20 F14 460-924300-31500-50500 Reach 2.0 Site 329



R20 F15 460-924300-31500-40900-0521 Reach 7.0 Site 320



R20 F16 460-924300-31500-40900-0521 Reach 7.0 Site 320



R20 F17 ILP 29017 Reach 1.0 Site 322

24 17:57



R20 F18 ILP 29017 Reach 1.0 Site 322

24 17:58



R20 F19 460-924300-31500-40900 Reach 5.0 Site 317

25 9:29



R20 F20 460-924300-31500-40900 Reach 5.0 Site 317

25 9:31



R20 F21 460-917900-53145 Reach 1.0 Site 286

25 16:56



R20 F22 ILP 39041 Reach 3.0 Site 251

25 17:20



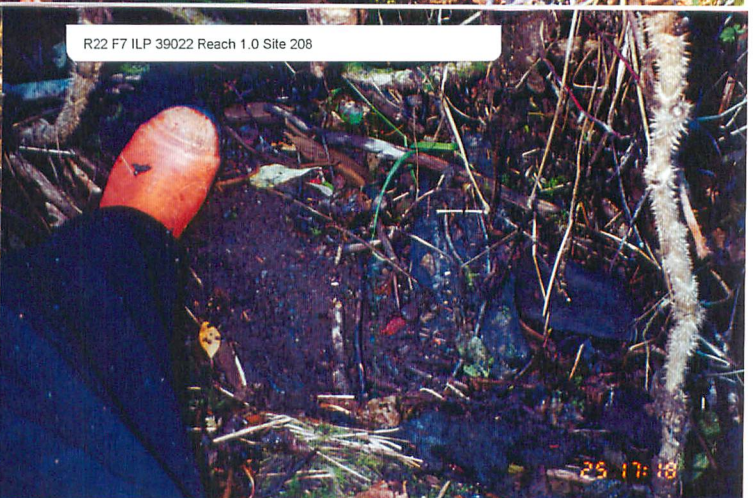
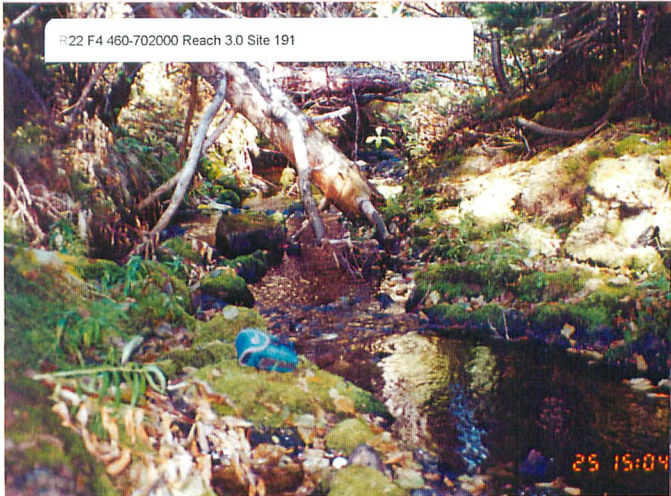
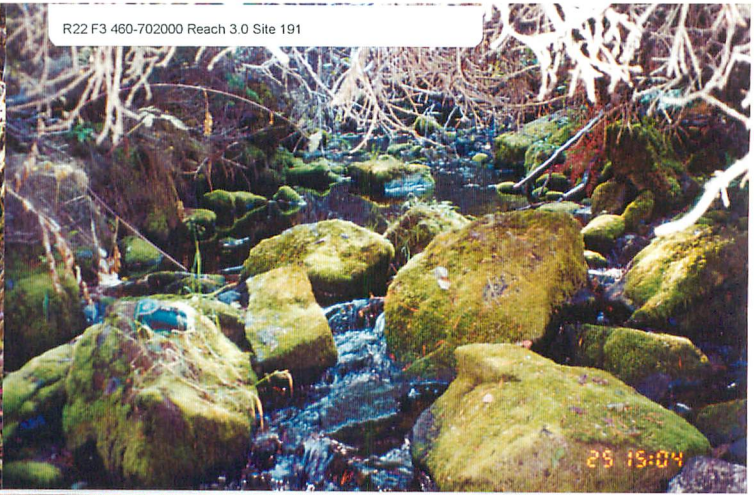
R20 F23 460-834400-26900 Reach 7.0 Site 248

25 12:14



R22 F1 ILP 49030 Reach 2.0 Site 197

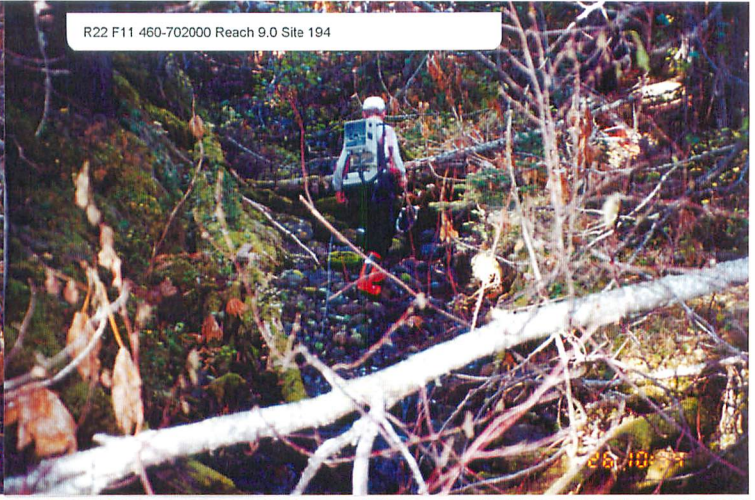
25 14:18





R22 F10 460-702000 Reach 9.0 Site 194

26 10:33



R22 F11 460-702000 Reach 9.0 Site 194

26 10:37



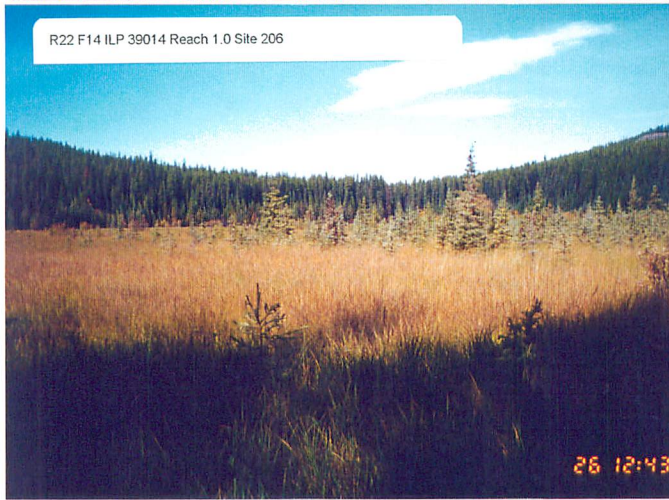
R22 F12 460-702000-82800 Reach 4.0 Site 203

26 12:21



R22 F13 460-702000-82800 Reach 4.0 Site 203

26 12:22



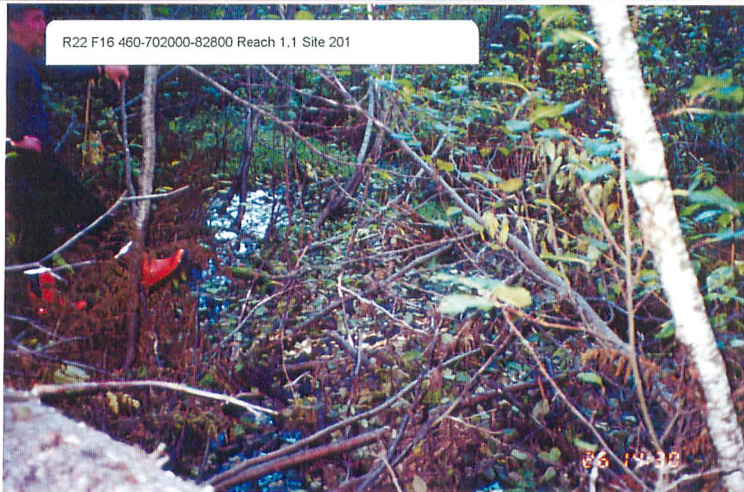
R22 F14 ILP 39014 Reach 1.0 Site 206

26 12:43



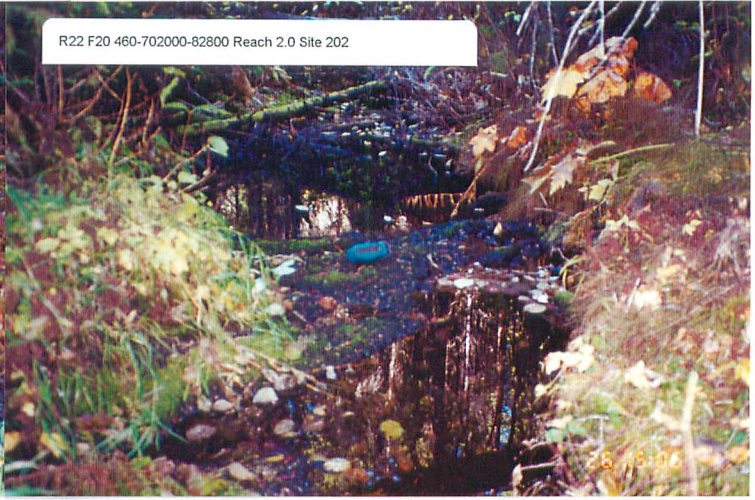
R22 F15 460-702000-82800 Reach 1.1 Site 201

26 10:29

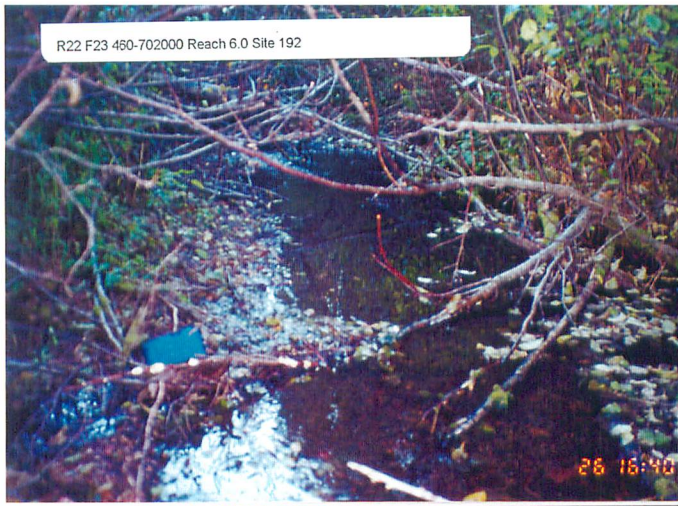


R22 F16 460-702000-82800 Reach 1.1 Site 201

26 10:30







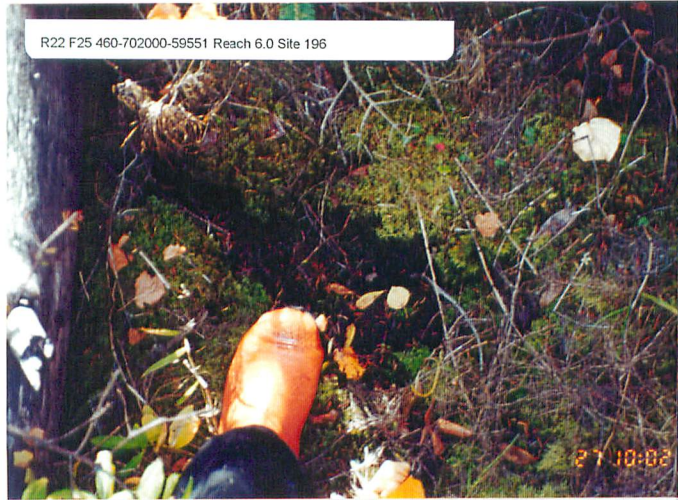
R22 F23 460-702000 Reach 6.0 Site 192

26 16:40



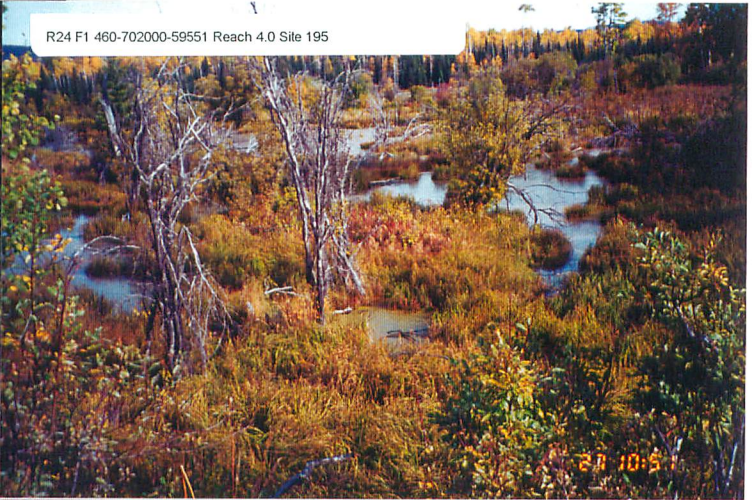
R22 F24 460-702000 Reach 6.0 Site 192

26 16:51



R22 F25 460-702000-59551 Reach 6.0 Site 196

27 10:02



R24 F1 460-702000-59551 Reach 4.0 Site 195

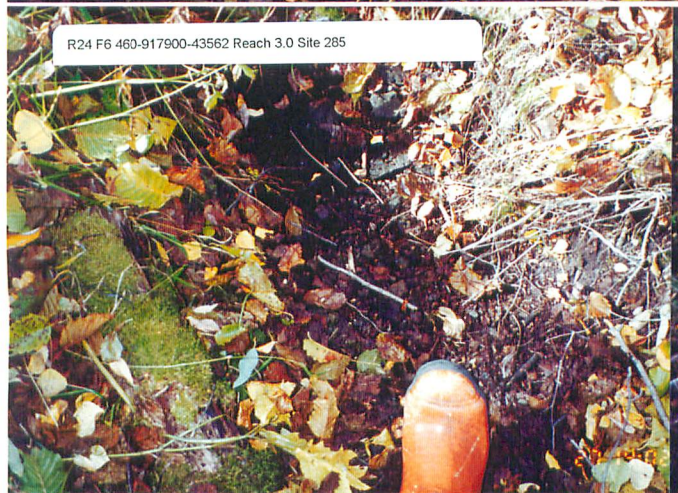
28 10:51



R24 F4 ILP 39009 Reach 1.0 Site 200



R24 F5 ILP 39009 Reach 1.0 Site 200



R24 F6 460-917900-43562 Reach 3.0 Site 285



R24 F7 ILP 39034 Reach 1.0 Site 250

27 14:50



R24 F8 ILP 40021 Reach 1.0 Site 297



R24 F9 ILP 40024 Reach 3.0 Site 300



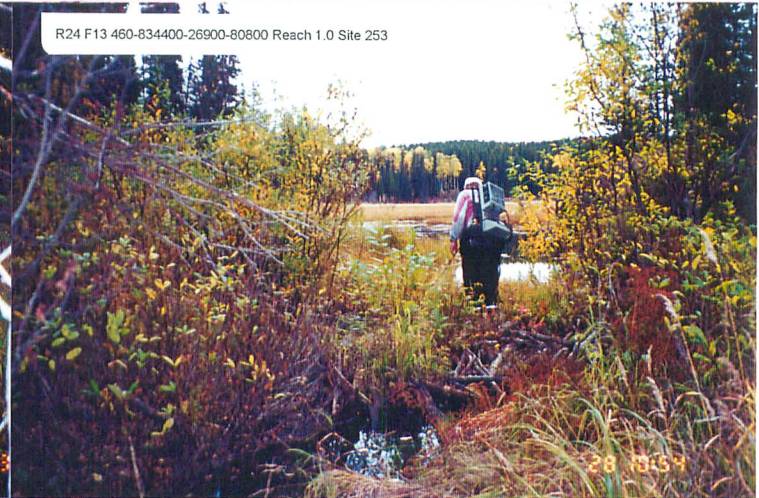
R24 F10 ILP 40024 Reach 3.0 Site 300



R24 F11 ILP 40024 Reach 1.0 Site 299



R24 F12 460-834400-26900-80800 Reach 1.0 Site 253



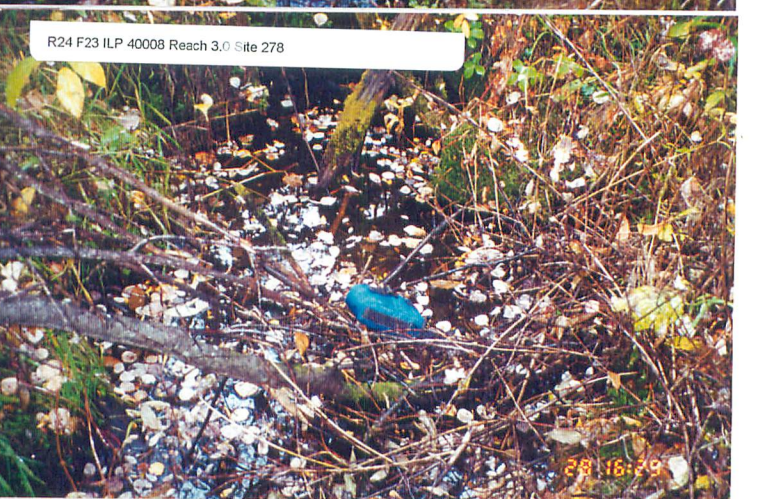
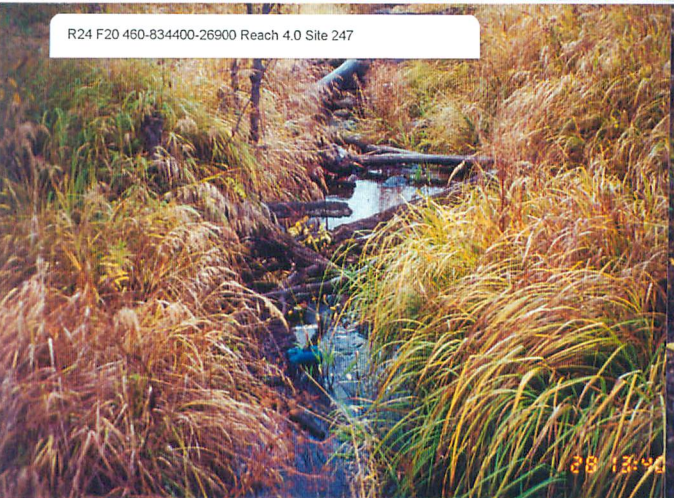
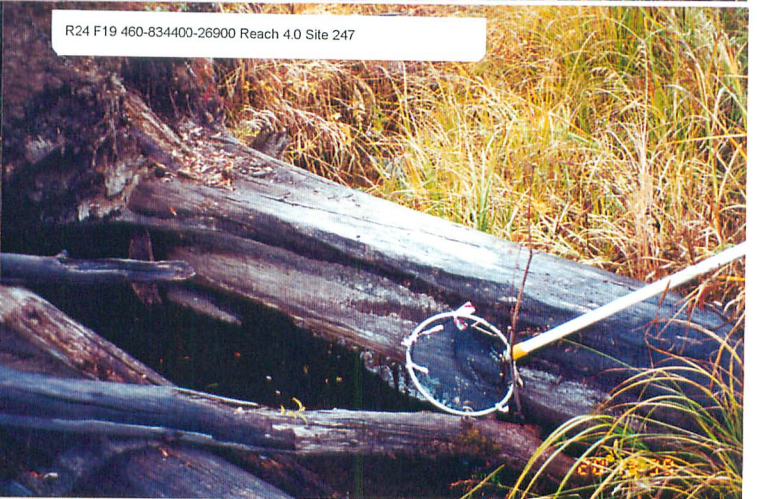
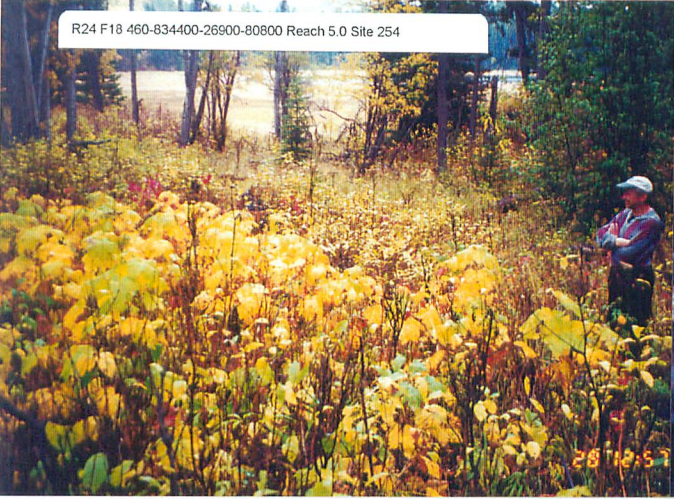
R24 F13 460-834400-26900-80800 Reach 1.0 Site 253



R24 F14 ILP 39046 Reach 2.0 Site 252



R24 F15 ILP 39046 Reach 2.0 Site 252



R24 F24 ILP 40008 Reach 3.0 Site 278



R24 F25 ILP 40008 Reach 5.0 Site 279



R25 F3 460-829700-20600-30400-4430 Reach 1.0 Site 231



R25 F5 460-829700-20600-30400-4430 Reach 0.1 Site 230



R25 F4 460-829700-20600-30400-4430 Reach 1.0 Site 231



R25 F6 460-829700-20600-30400-4430 Reach 0.1 Site 230

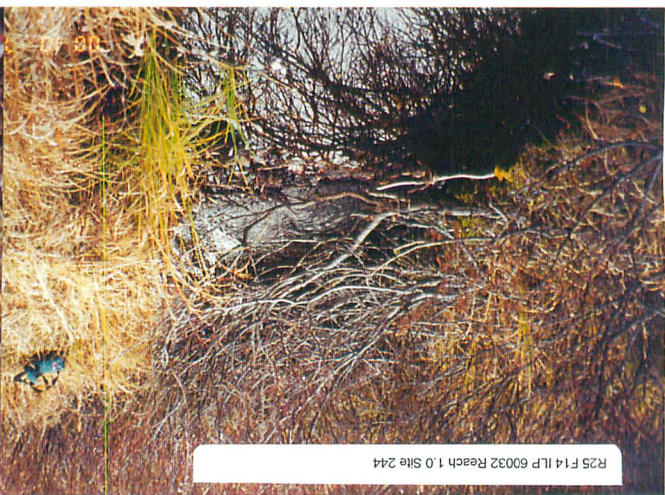


R25 F7 460-829700-20600-30400 Reach 4.0 Site 227

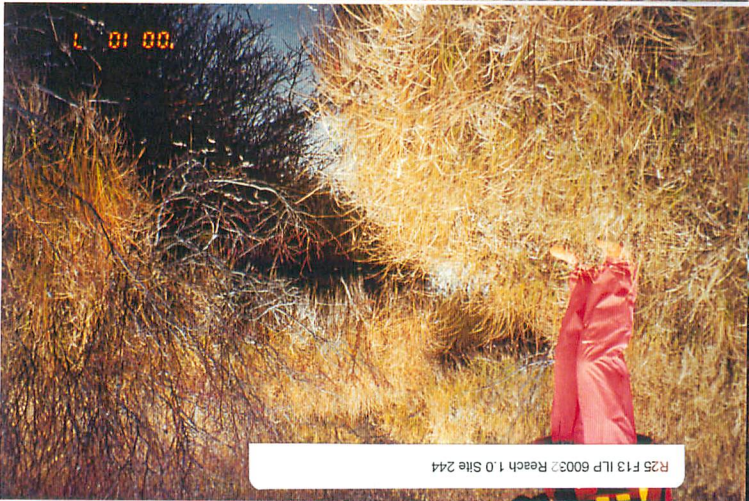




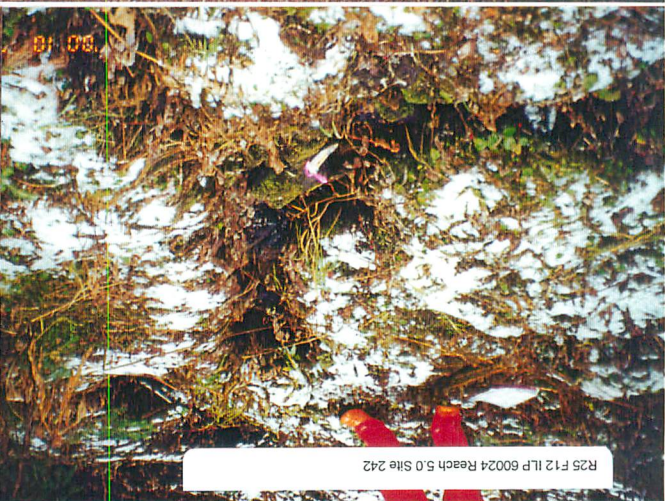
R25 F15 460-829700-20600 Reach 16.0 Site 221



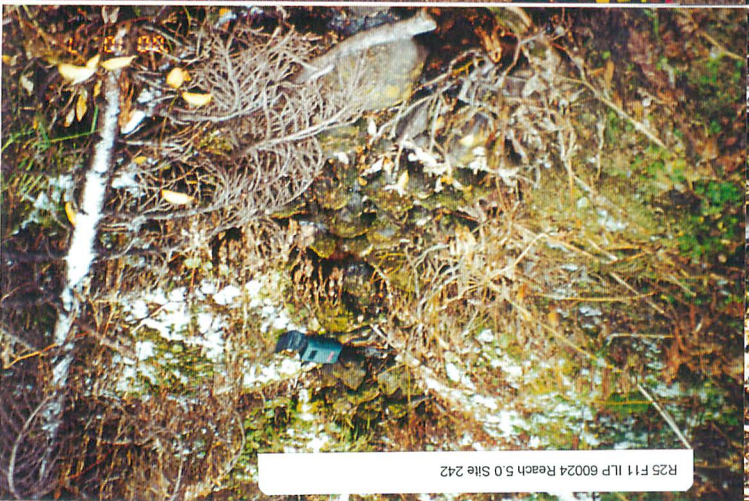
R25 F14 ILP 60032 Reach 1.0 Site 244



R25 F13 ILP 60032 Reach 1.0 Site 244



R25 F12 ILP 60024 Reach 5.0 Site 242



R25 F11 ILP 60024 Reach 5.0 Site 242



R25 F10 460-829700-20600-30400 Reach 1.0 Site 228



R25 F9 460-829700-20600-30400 Reach 1.0 Site 228



R25 F8 460-829700-20600-30400 Reach 4.0 Site 227



R25 F16 460-829700-20600 Reach 16.0 Site 221



R25 F17 460-829700-20600 Reach 17.0 Site 222



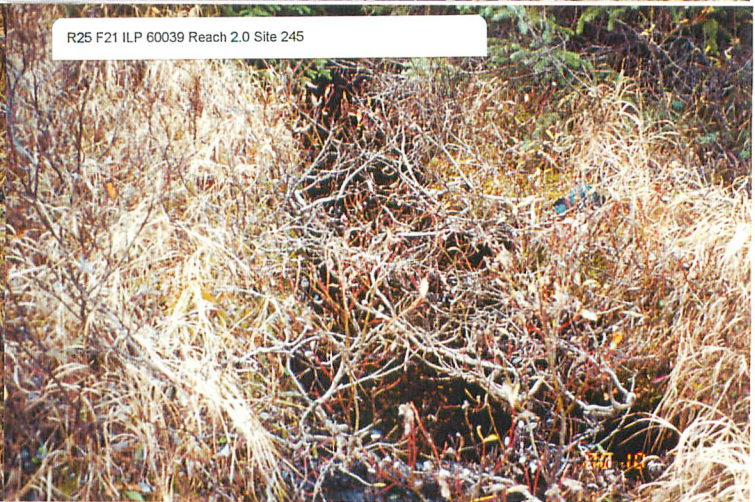
R25 F18 460-829700-20600 Reach 17.0 Site 222



R25 F19 460-829700-20600 Reach 21.0 Site 223



R25 F20 460-829700-20600 Reach 21.0 Site 223



R25 F21 ILP 60039 Reach 2.0 Site 245



R25 F22 ILP 60039 Reach 2.0 Site 245



R26 F1 ILP 40008 Reach 5.0 Site 279



R26 F2 ILP 50088 Reach 2.0 Site 273

28 17:40



R26 F3 ILP 50088 Reach 2.0 Site 273

28 17:41



R26 F4 ILP 49050 Reach 2.0 Site 261

29 10:35



R26 F5 ILP 49045 Reach 4.0 Site 259

29 10:55



R26 F6 460-882900 Reach 2.0 Site 265

29 13:18



R26 F7 460-882900 Reach 2.0 Site 265

29 13:13



R26 F8 460-882900 Reach 3.1 Site 266

29 17:19



R26 F9 460-882900 Reach 3.1 Site 266

29 17:19

R26 F10 460-882900 Reach 3.1 Site 266



R26 F11 460-882900 Reach 5.0 Site 268



R30 F5 460-829700 Reach 8.0 Site 211



R30 F6 460-829700 Reach 8.0 Site 211



R30 F7 460-829700 Reach 8.0 Site 211



R30 F8 460-829700 Reach 11.0 Site 212





R30 F9 460-829700-20600-30400 Reach 6.0 Site 229



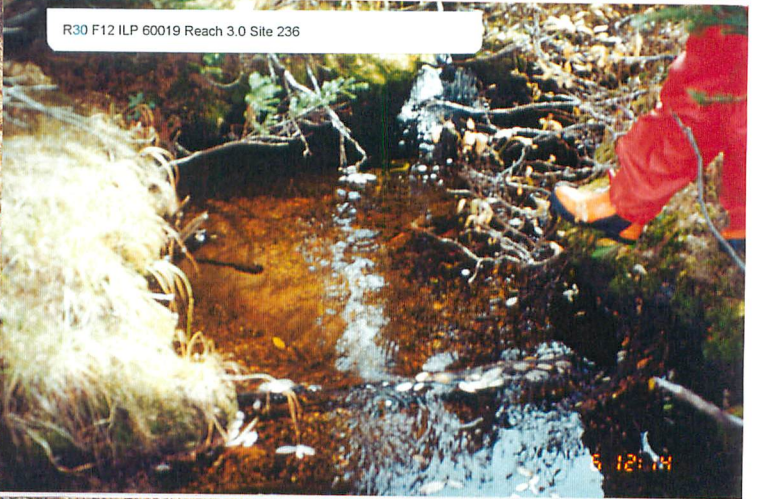
R30 F10 460-829700-20600-30400 Reach 6.0 Site 229



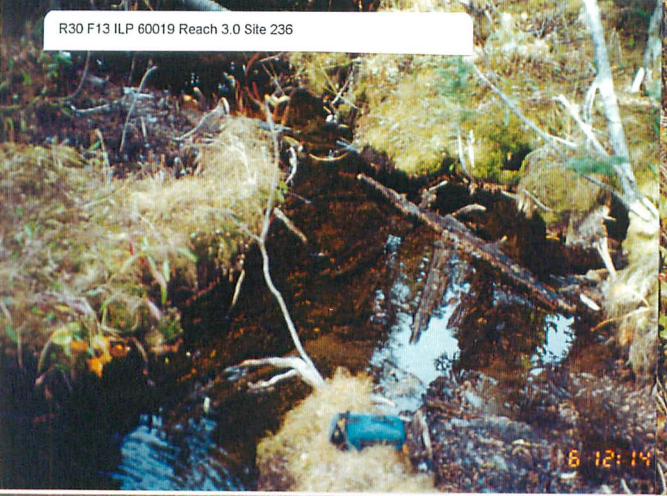
R30 F11 ILP 60019 Reach 2.0 Site 235



R30 F12 ILP 60019 Reach 3.0 Site 236



R30 F13 ILP 60019 Reach 3.0 Site 236



R30 F14 ILP 60014 Reach 3.0 Site 234



R30 F15 460-829700-20600-30400-4430 Reach 5.0 Site 232



R30 F16 460-829700-20600-30400-4430 Reach 5.0 Site 232





R30 F17 460-629700-20600-30400-4430 Reach 7.0 Site 233



R30 F18 460-629700-20600-30400-4430 Reach 7.0 Site 233



R30 F19 ILP 50056 Reach 14.0 Site 369



R30 F20 ILP 50056 Reach 14.0 Site 369



R30 F21 ILP 50056 Reach 17.0 Site 370



R30 F22 ILP 49045 Reach 2.0 Site 258



R30 F23 ILP 49045 Reach 2.0 Site 258



R30 F24 ILP 49042 Reach 2.0 Site 256



R32 F7 ILP 49004 Reach 1.0 Site 213



R32 F6 ILP 49004 Reach 1.0 Site 213



R32 F5 ILP 49022 Reach 1.0 Site 264



R32 F4 ILP 49022 Reach 1.0 Site 264



R32 F3 ILP 49015 Reach 2.0 Site 263



R32 F2 ILP 49013 Reach 2.0 Site 262



R32 F1 ILP 49043 Reach 1.0 Site 257



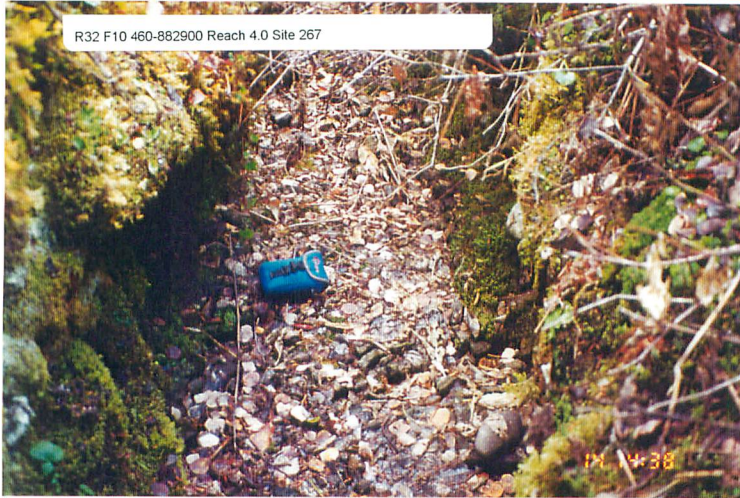
R30 F25 ILP 49042 Reach 2.0 Site 256



R32 F8 ILP 50086 Reach 2.0 Site 272



R32 F9 ILP 50086 Reach 2.0 Site 272



R32 F10 460-882900 Reach 4.0 Site 267



R32 F11 460-882900 Reach 4.0 Site 267



R32 F12 460-882900 Reach 7.0 Site 269

R32 F13 460-000000 Reach 6.0 Site 186



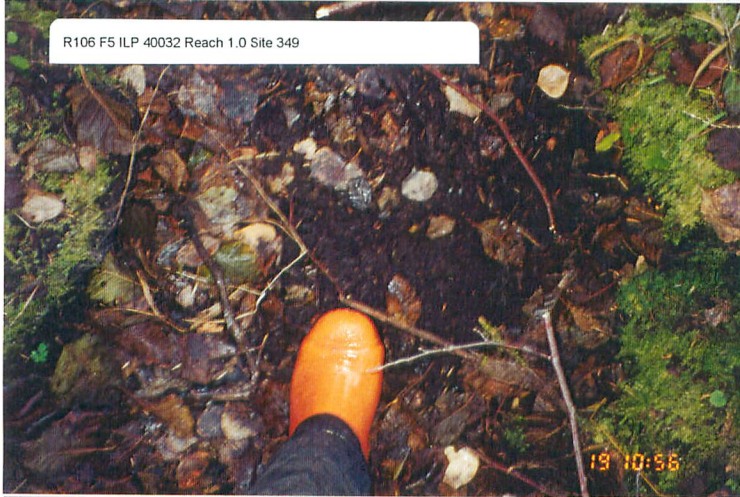
19 9:48

R32 F14 460-000000 Reach 6.0 Site 186



19 9:49

R106 F5 ILP 40032 Reach 1.0 Site 349



19 10:56

R106 F6 ILP 40032 Reach 1.0 Site 349



19 10:58

R106 F7 ILP 40032 Reach 1.0 Site 349



19 1:00

**Reconnaissance (1:20,000) Fish and Fish Habitat  
Inventory**

**Tributaries in the Bulkley River Watershed  
2000**

- **Appendix IV: Hardcopy Maps**