

87-504-16193
6/88

RECONNAISSANCE GEOCHEMICAL SOIL SURVEY
AND
RECONNAISSANCE GEOLOGICAL SURVEY REPORT

ON THE

SPRING GROUP
RAD, KEL, QUE, PEA, ARE MINERAL CLAIMS

OMINECA MINING DIVISION
LAT. 54° ^{31'30"}~~32'~~ N. and LONG. 126° ^{06'42"}~~13'~~ W.

NTS 93 ^{1/9E}

16,193

GEOLOGICAL BRANCH
ASSESSMENT REPORT

OWNER OF MINERAL CLAIMS: Bishop Resources Development Ltd.
Vancouver, B. C.

OPERATOR OF MINERAL CLAIMS: Bishop Resources Development Ltd.
Vancouver, B. C.

CONSULTANT: Holt Engineering Ltd., Mr. E. S. Holt, P.Eng. (B.C.)

AUTHOR: C. H. Stanley, BSc.

FILMED

August, 1987

TABLE OF CONTENTS

	PAGE
1.0 INTRODUCTION	1.
2.0 RECONNAISSANCE GEOCHEMICAL SURVEY	5.
2.1 FIELD	5.
2.2 LABORATORY	6.
2.3 DETAILED TECHNICAL DATA AND INTERPRETATION	7.
2.3.1 PURPOSE	7.
2.3.2 RESULTS	7.
2.3.3 INTERPRETATION	8.
3.0 RECONNAISSANCE GEOLOGICAL SURVEY	9.
4.0 CONCLUSIONS	10.
5.0 CERTIFICATION	11.
6.0 BIBLIOGRAPHY	12.

APPENDICES

	APPENDIX
STATEMENT OF COSTS	A
SUPPORTING INVOICES	B
RESULTS OF ANALYSIS, RECONNAISSANCE GEOCHEMICAL SURVEY	C
ENDORSEMENT LETTER	D

FIGURES

FIGURE	DESCRIPTION	PAGE
1.	CLAIM BLOCK LOCATION	2.
2.	SPRING GROUP OF MINERAL CLAIMS, Rad, Kel, Que, Pea, Are on the Topley property	3.
3.	TOPOGRAPHIC MAP OVER RAD, KEL, QUE CLAIMS SHOWING ROCK OUTCROP FROM RECONNAISSANCE GEOLOGICAL SURVEY AND LOCATION OF SOIL SAMPLES FROM RECONNAISSANCE GEOCHEMICAL SURVEY SCALE: 1:5000	IN POCKET
4.	TOPOGRAPHIC MAP OVER QUE, PEA, ARE CLAIMS SHOWING ROCK OUTCRIP FROM RECONNAISSANCE GEOLOGICAL SURVEY AND LOCATION OF SOIL SAMPLES FROM RECONNAISSANCE GEOCHEMICAL SURVEY SCALE: 1:5000	IN POCKET

1.0 INTRODUCTION

The Spring Group of mineral claims, namely; Rad, Kel, Que, Pea, Are, are part of the Topley property, owned by Bishop Resources Development Ltd. The claims are located some 8 kilometers northeast of the village of Topley which is situated on the Yellowhead Highway 16 which connects Prince George to Prince Rupert, B. C. The coordinates of the Topley property are 54° 32'N and 126° 13'W. Elevations are from 975 meters to 1522 meters. Most of the previous work has been done at the lower elevations, however, the recent geological reconnaissance mapping and reconnaissance geochemical surveying were done at the higher elevations.

The northern interior plateau climate here is moderate with below-freezing average temperature from November to March and there is light to moderate precipitation at the lower elevations. Nez Lake, which drains into Findlay Creek, is part of the headwaters which form the Bulkley Valley drainage system. Findlay Creek flows westerly, through the northern edge of the property. The south-east part of the property where the Spring Group is located is drained by Watson, Ailport, and North Ailport Creeks which flow southerly into the Bulkley River. Forest cover is predominately lodgepole pine. There is some scattered spruce and balsam and undergrowth in previously fire burned areas to the north is dense, particularly in the swampy areas, and windfalls are plentiful. At higher elevations, wooded areas with southern exposure are less dense with gentle alpine meadows.

Access to the north end of the Topley property is by paved road along the Granisle-Babine Lake highway for 4.5 kilometers, then north easterly on an

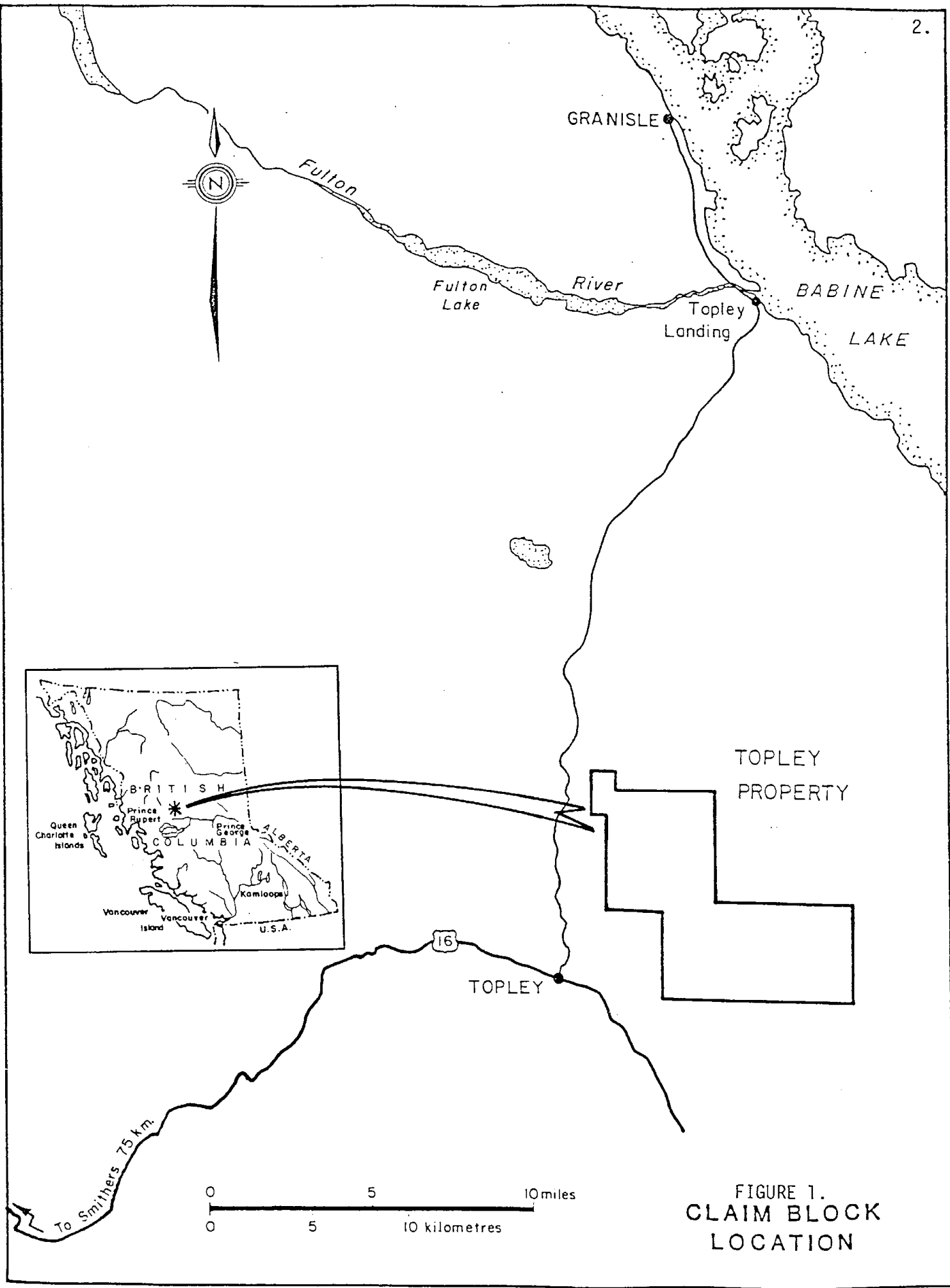
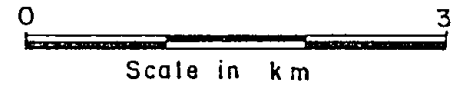


FIGURE 1.
CLAIM BLOCK
LOCATION

BISHOP RESOURCES DEVELOPMENT LTD.
 Omineca Mining Division, B.C.
TOPLEY PROJECT
MINERAL CLAIM HOLDINGS



SPRING GROUP

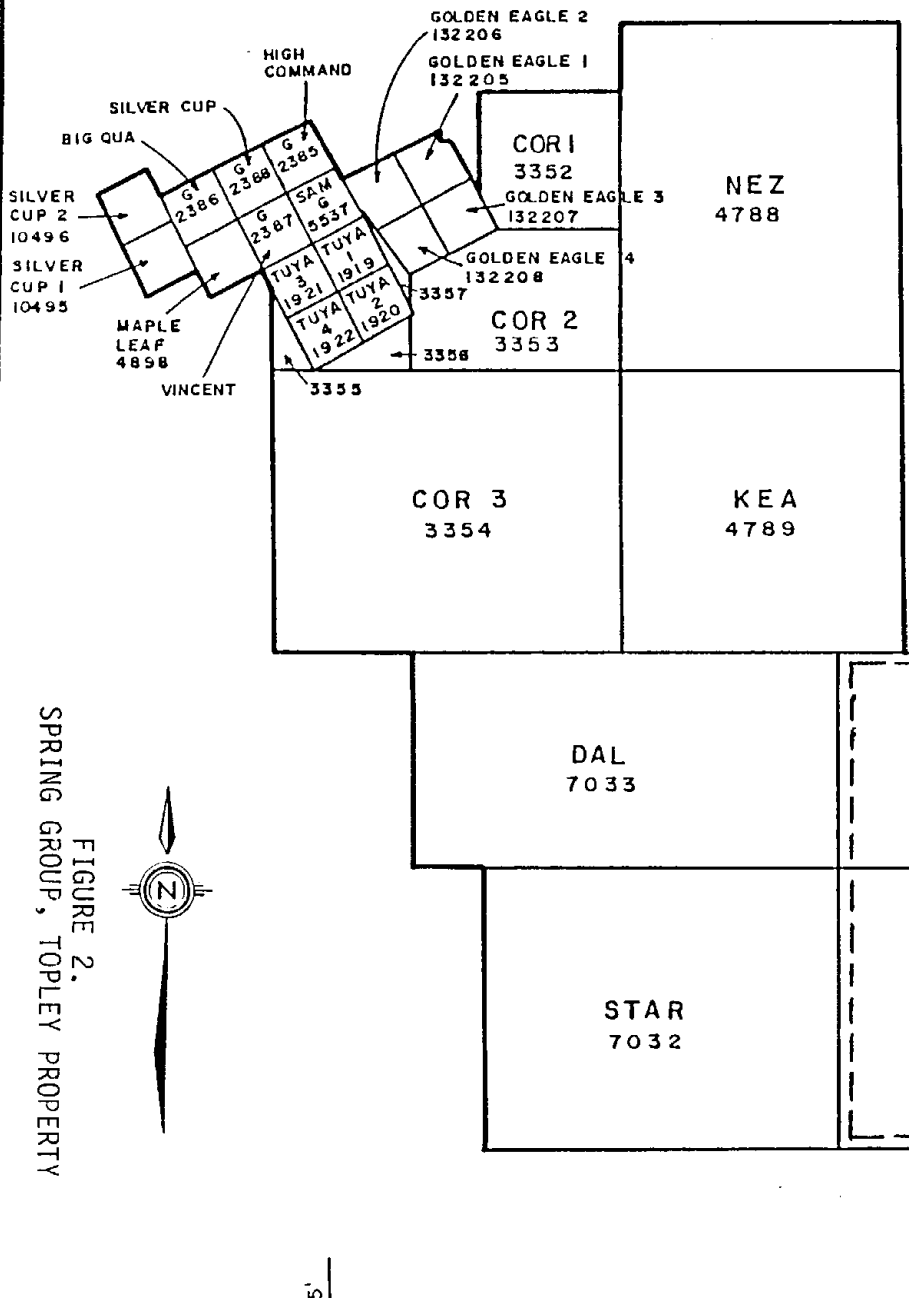


FIGURE 2.
 SPRING GROUP, TOPLEY PROPERTY

126° 15'

improved gravel road for 0.5 kilometers, followed by a further 5.3 kilometers leading easterly to the Golden Eagle workings. The section of 5.3 kilometers to the Golden Eagle area is mostly unimproved suitable only to four-wheel drive vehicles for most of the field season. Access to the south-east section of the property to the Spring Group is by overgrown trails from Highway 16 north, or by helicopter. The location of the Spring Group is shown in Figure 1.

The Spring Group is comprised of the following mineral claims:

CLAIM	RECORD NUMBER	NUMBER OF UNITS
Kel	7030	15
Rad	7031	20
Que	7071	18
Pea	7072	20
Are	7073	18

and the position of the claims with respect to the Topley property is shown in Figure 2.

The Silver Cup and Golden Eagle showings which are part of the Topley property were discovered early in the century. During the 1930's exploration and development work by shafts, adits, trenches, and pits was conducted and several shipments of high grade mineralization were made to the Trail smelter. In 1981, Bishop Resources Development Ltd. formed the Topley property by optioning the Silver Cup, Golden Eagle, and Tuya mineral claims, and staking additional ground. Bishop conducted exploration work every year since 1981, mostly on the north end of the property. This work consisted of geological mapping, line-cutting, geochemical surveying, geophysical surveying, and diamond drilling. Diamond drilling has been carried out over several thousand

meters over an area of approximately 2 kilometers by 2 kilometers. The drilling has indicated two styles of mineral concentrations. From the Silver Cup area chalcopyrite, sphalerite, and galena are associated with quartz carbonate veining with extensive sericitic alteration. From the Golden Eagle area narrow veins and fracture fillings carry high concentrations of silver in the form of tetrahedrite. Drilling in the Tuya area on a geophysical anomaly may have identified a coincidence of the two styles of mineralization.

Information from various maps, photos, and surveys indicate a northwest to southeast structural trend within the Hazelton pyroclastics and the Spring Group of mineral claims is on strike with this trend. Holt Engineering Ltd. conducted a reconnaissance geological survey and reconnaissance geochemical survey in order to assess the potential of the ground to the southeast in relationship to the mineralization to the northwest.

Bishop has under option the Silver Cup and Tuya mineral claims. The Golden Eagle and all the other mineral claims are owned by Bishop Resources Development Ltd. as to 100%. Bishop Resources Development Ltd. has been and is the operator of the property. The Spring Group, which are the Rad, Kel, Que, Pea, Are mineral claims are owned by Bishop Resources Development Ltd. as to 100%. No economic mineralization has been established on the Topley property to date although extensive drilling on the northwest section of the property show some reserve grade calibre intersections.

2.0 RECONNAISSANCE GEOCHEMICAL SURVEY

2.1 FIELD

A reconnaissance geochemical soil survey was conducted over the Spring Group with sample locations shown on Figures 3 and 4. The topographical base map

used for plotting locations of samples was prepared in early 1986 by Delta Aerial Surveys Ltd. and sample locations are identified by numbers 1 to 341. Samples were taken by grub hoe from an average depth of four to eight inches from the B soil horizon which was well developed. A total of 451 samples were taken but only 341 samples were from the Spring Group. The samples were bagged into kraft envelopes, which were numbered according to the numbers corresponding to sample locations on Figures 3 and 4. The bagged samples were hung in the core shack on the Topley property and dried for several days, then sent to Min-En Laboratories Ltd., 705 West 15th St., North Vancouver, B. C., V7M 1T2 for analysis.

The reconnaissance geochemical survey was carried out and by Holt Engineering Ltd., 4091 St. Albans Ave., North Vancouver, B. C., V7N 1S9 from late June to August 1986, from two fly-camp operations. Transportation to the fly-camps was provided by Westland Helicopters Inc., Box 567, Houston, B. C., V0J 2N0.

2.2 LABORATORY

Min-En Laboratories Ltd., 705 West 15th Street, North Vancouver, B. C., V7M 1T2 prepared the samples and conducted the analytical procedure on the soil samples gathered from the Spring Group.

The samples were dried at 95° C, then the soil samples were screened by a 80 mesh seive to obtain the minus 80 mesh fraction for analysis. A 1.0 gram sample was weighed out into a calibrated test tube and digested for 6 hours with HNO₃ and HClO₄ mixture. After cooling, the samples were diluted to standard volume. The solutions were analysed by computer operated Jarrell Ash 9000 IP inductively coupled plasma analyser. The results shown in Appendix C were formatted by routing computer dotline print out for 6 element trace ICP.

2.3 DETAILED TECHNICAL DATA AND INTERPRETATION

2.3.1 PURPOSE

The Topley property covers an extensive area. During the 1986 field season some 2,185 soil and 6 silt samples were collected and analysed over the entire property for that field season. 518 of these soil samples were reconnaissance geochemical soil samples. The balance of the soil samples were collected over a controlled grid and the results were subject to analysis where correlation coefficients were calculated and histograms and cumulative probability plots were run by computer from statistical treatment, then contour maps were drawn for threshold and anomalous values. The 341 soil samples from the Spring Group of the 518 reconnaissance geochemical samples collected however, were not subject to statistical treatment. These samples were gathered at wide intervals at random. The controlled grid covers an area where diamond drilling was conducted and is possibly intersected by northwest, southeast trending structures. These structures are indicated on various published geological maps. The purpose of the reconnaissance geochemical survey was to hopefully find spot or clusters of high geochemical values along the trend as extensions of mineralization to the southeast from the areas of mineralization encountered by diamond drilling, to the northwest. Any spot or cluster highs found would be the focal points from which detailed geochemical surveying with a controlled grid should be carried out.

2.3.2 RESULTS

From the analysis of the samples on the controlled grid on the north end of the Topley property, it was determined from contour maps that the following anomalous values prevailed: silver, 1.0 ppm; arsenic, 20 ppm, copper, 40 ppm, lead, 70 ppm, antimony, none determined; zinc, 100 ppm; mercury, 100 ppb;

gold, none determined. Although the 341 samples from the Spring Group were not subject to statistical analysis, the above values were used as a guide for checking spot and cluster highs in the reconnaissance survey. The overburden is underlain by the same massive and fragmental andesites and the soil is a somewhat sandy clay with small pockets of pure clay.

The results of the geochemical analysis are shown in Appendix C. Locations of the samples on the claims are indicated on Figures 3 and 4, numbers 1 to 341 for the Spring Group.

2.3.3 INTERPRETATION

The Topley property is underlain by mixed volcanics of the Hazelton group of Jurassic and Cretaceous age and are intruded by Jurassic granitic stocks. The Hazelton pyroclastics consist of ash, lapilli and breccia intermixed with andesitic and rhyolitic flows. Exploration on the northwest portion of the Topley property has encountered widespread mineralization in drill holes and on surface and it has been shown that the volcanic unit which underlays the property is a favourable host.

The most meaningful cluster highs from the survey appear to be samples 227 to 230 inclusive, 289 to 293 inclusive and 338 to 340 inclusive. These locations can be seen on Figure 3. From airphoto interpretation, it appears that a major lineament running northwest to southeast intersects the area of these cluster highs. This lineament cuts through the area of mineralization found on the northwest end of the Topley property. It is not known if these features are related at this time. Detailed geochemistry should be carried out along the lineament and a controlled grid should be established around samples 227 to 340.

These cluster highs occur in an area where there are mixed pyroclastics with chloritization and epidotization. Further to the northwest, rusty andesite, pyrite and quartz-carbonate veinlets were encountered. The topography varies between moderately steep to moderately flat. Undergrowth is thick and timber is sparse to thick. Steep-walled creeks are encountered on Watson, Ailport and North Ailport Creeks. Soil is sandy clay with small pockets of clay only.

3.0 RECONNAISSANCE GEOLOGICAL SURVEY

The reconnaissance geological survey was carried out by Holt Engineering Ltd., 4091 St. Albans Ave., North Vancouver, B. C., V7N 1S9. The survey was carried out concurrently with the reconnaissance geochemical survey from late June to August 1986, from two fly-camp operations.

The purpose of the reconnaissance geological survey was to determine whether the broad band of favourable volcanic host rocks seen on the northwest section of the Topley property continue into the Spring Group, and how these rocks relate to the reconnaissance geochemical survey conducted on the Spring Group.

Outcrop boundaries located on geochemical reconnaissance soil survey traverses were plotted as shown on Figures 3 and 4. The scale of these base maps is 1:5000. The Topley property is underlain by mixed volcanics of the Hazelton group of Jurassic and Cretaceous age and are intruded by Jurassic granitic intermixed with andesitic and rhyolitic flows. Rocks encountered on the reconnaissance survey were andesites, mixed pyroclastics, some with maroon clasts. Along the airphoto lineament which trends northwest to southeast, some quartz-carbonate stringers, pyrite and rusty andesite were encountered.

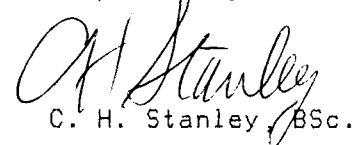
Further to the southeast, mixed volcanics which were highly chloritized and epidotized were seen. These outcrops are coincident with some cluster geochemical highs and appear to coincide with a northwest to southeast trending airphoto linear.

Reconnaissance geological surveying has shown that the Spring Group of mineral claims are underlain with the same unit as seen on the northwest area of the Topley property.

4.0 CONCLUSIONS

There is a long northwest to southeast trending lineament on the Topley property. It appears to intersect the western end of the Spring Group. There is a cluster geochemical high, for silver and copper where geochemical sample locations 289 to 340 are positioned on Figure 3. This is in the area where the lineament should trace through. This lineament is called by the writer, the Mt. McCrae linear. The volcanics in the area of the cluster high show chloritization and epidotization. A controlled geochemical soil survey grid should be established in this area. By following the trace of the Mt. McCrae linear northwesterly to the adjoining claims, outcrops of rusty andesite, pyrite, and quartz carbonate stringers were encountered. Also, spot highs in silver geochemistry are found along the trace of the Mt. McCrae linear.

Respectfully submitted,


C. H. Stanley BSc.


August, 1987.

5.0 CERTIFICATION

11.

I, C. H. Stanley, of Penthouse 5, 5775 Toronto Road, Vancouver, B. C. do hereby certify:

1. I am an exploration geophysicist, and have worked continuously as an explorationist since graduation in 1971.
2. I am a graduate of the University of British Columbia, with a Bachelor of Science degreee in geophysics.
3. I am President and Director of Bishop Resurces Development Ltd. and have been engaged principally on the the comany's projects in both exploration and financial affairs for the company.
4. The subject of this report was written from personal knowledge of the project and in consultation with Mr. E. S. Holt, P.Eng., consultant on the Topley property project.


C. H. Stanley, BSc.

August, 1987.

6.0 BIBLIOGRAPHY

- Holt, E. S., P.Eng., REPORT ON DIAMOND DRILLING RESULTS TOPLEY PROPERTY,
June 5, 1985.
- Holt, E. S., P.Eng., GEOPHYSICAL SURVEY AND DIAMOND DRILLING REPORT,
November, 1985.
- Holt, E. S., P.Eng., TOPLEY PROJECT, PROPOSED EXPLORATION PROGRAM,
February, 1986.
- Janes, R. H., P.Eng., REVIEW OF TOPLEY PROPERTY,
October 14, 1986.
- Burns, P. J., BSc., A GEOLOGICAL OVERVIEW ON THE BISHOP RESOURCES DEVELOPMENT
LTD. TOPLEY SILVER-GOLD PROPERTY, October, 1986.
- Burns, P. J., BSc., THE GOLDEN EAGLE SILVER-GOLD PROPERTY, November, 1986.
- Burns, P. J., BSc., A SUMMARY DESCRIPTION OF PREVIOUSLY DOCUMENTED MINERAL
SHOWINGS ON THE BISHOP RESOURCES TOPLEY PROPERTY,
December, 1986.
- Hartwick, P. A., BSc.,
Ridler, R. H., Ph.D., HISTORY OF THE SILVER CUP PROPERTY, December 31, 1986.

APPENDIX A

STATEMENT OF COSTS

The reconnaissance geological mapping and reconnaissance geochemical surveying was carried out on the Kel, Rad, Que, Pea, Are claims by the following companies:

HOLT ENGINEERING LTD.

WESTLAND HELICOPTERS INC.

MIN-EN LABORATORIES LTD.

and accommodation in the Houston, B. C. area was provided by:

PLEASANT VALLEY MOTEL & RESTAURANT.

HOLT ENGINEERING LTD.

4091 St. Albans Ave., North Vancouver, B. C., V7N 1S9, conducted exploration reconnaissance geological mapping and reconnaissance geochemical surveying from two fly-camp operations with related drafting, supervision and travel.

Work was conducted by the following people on the following date:

NAME	OCCUPATION	DATES WORKED
E. Holt	Proj. Manager	June 29,30, July 1-5
rate @	Geological	6.5 days
\$450/day	Consultant	July 12-18, July 22-31

16.5 days

August 13-26

13.5 days

B. Holt Field Ass't. June 29,30, July 1-4

rate @ 5.5 days

\$80/day July 16-18, July 22-31

13.0 days

August 6-26

20.5 days

COST TO BISHOP

\$25,630.53

WESTLAND HELICOPTERS INC.

Westland Helicopters Inc. provided fly-camp transportation and support for the reconnaissance geological mapping and reconnaissance geochemical surveying.

Flights were made on June 29, July 3, July 23, July 28, and August 18, 1986.

COST TO BISHOP

\$ 1,880.20

MIN-EN LABORATORIES LTD.

Min-En Laboratories Ltd. conducted sample preparation and sample analysis on the soil samples obtained from the reconnaissance geochemical survey. Sample analysis was conducted during the weeks of July 14 and August 8, 1986.

COST TO BISHOP

\$ 7,088.20

PLEASANT VALLEY MOTEL & RESTAURANT

Pleasant Valley Motel & Restaurant provided meals and accommodation for personnel while not in the fly-camp.

COST TO BISHOP

\$ 1,229.23

NOTE:

A total of 451 geochemical samples were collected. However, only 341 of the samples were from the Kel, Rad, Que, Pea, Are claims. Since the work commenced on the Que, Pea, Are, Kel, Rad claims, the full amount of the Holt Engineering Ltd. invoice dated July 4, 1986; Westland Helicopters Inc. invoice dated June

29, 1986; Pleasant Valley Motel & Restaurant invoices dated June 30, July 4, July 31, 1986 are applied. Only 75% of all other invoices are applied since $341/451 \times 100 = 75.6\%$. THE TOTAL AMOUNT APPLIED TO ASSESSMENT ON THE KEL, RAD, QUE, PEA, ARE CLAIMS CONTAINING 91 UNITS IS \$ 9,100.00 AND \$ 19,151.46 WAS APPLIED TO BISHOP PAC ACCOUNT FOR A TOTAL OF \$ 28, 251.46.

APPENDIX B

INVOICE



HOLT ENGINEERING LTD.

Exploration and Mine Development

4091 St. Albans Ave., North Vancouver, B.C. V7N 1S9 • Telephone (604) 987-6714

INVOICE NO. 239

OUR FILE NO. 117-1

TO: Bishop Resources Development Ltd.
Penthouse 5, 5775 Toronto Rd.,
Vancouver, B.C.
V6T 1X4

DATE July 4, 1986

PERIOD COVERED: June, 1986

RE: Topley Property - project planning, co-ordination of project requirements and execution of initial field program.

ENGINEERING SERVICES:

E.S. Holt (project Manager)	6.5 days @ \$450	\$2925.00
B.D. Holt (Fields Assistant)	5.5 days @ \$80	<u>467.50</u>

Total Engineering Services \$3,392.50

REIMBURSABLE EXPENSES:

B.C. Telephone	\$2.92
Travel & Field Expenses	
Air Fares	316.10
Accommodation	78.85
Meals	42.16
Field Supplies	5.72
Camp food	182.63
Fuel	<u>87.77</u>

Sub total	716.15
plus 10%	71.62

Vehicle mileage (1118 kms @ .25)	<u>279.50</u>
Camp rental and consumables geochem bags, flagging, propane etc.	<u>150.00</u>

Total Reimbursable Expenses 1,217.27

TOTAL AMOUNT DUE

\$4,609.77

Handwritten: Paid Royal #655 29/7/86 \$4,609.77 apply FULL MIT
Handwritten: DO NOT REVERSE CLAIMS

INVOICE



HOLT ENGINEERING LTD.

Exploration and Mine Development

4091 St. Albans Ave., North Vancouver, B.C. V7N 1S9 • Telephone (604) 987-6714

INVOICE NO. 241

OUR FILE NO. 117 - 1

TO: Bishop Resources Development Ltd.,
Penthouse 5, 5775 Toronto Road,
Vancouver, B.C.
V6T 1X4

DATE August 1, 1986

PERIOD COVERED: July, 1986

RE: Exploration work on Topley project, including reconnaissance geology and geochemistry from two "fly-camp" operations with related drafting, supervision and travel.

ENGINEERING SERVICES

E.S. Holt	16.5 days @ \$450	\$7,425.00
B.D. Holt	13.0 days @ \$85	1,105.00
JR. Draftsman	4.0 hrs. @ \$15	<u>60.00</u>

Total Engineering Services

\$8,590.00

REIMBURSABLE EXPENSES (as per attached vouchers)

Lou Crossie Travel	\$690.80	
Western Technical Supply	19.17	
Field Supplies	65.53	
Meals	38.75	
Vehicle expenses	106.54	
Camp food	116.93	
Bronco Rental (July)	900.00	
Photocopying 55 @ 10¢	5.50	
B.C. Telephone	<u>.94</u>	
Sub total		\$1,944.16
plus 10% (on cash expenditures)		<u>103.87</u>

Total Reimbursable Expenses

2,048.03

TOTAL AMOUNT DUE

\$10,638.03

Paid Royal #685 Aug. 25, 1986

\$10,638.03 \times .759 = \$7,975.52

INVOICE



HOLT ENGINEERING LTD.

Exploration and Mine Development

4091 St. Albans Ave., North Vancouver, B.C. V7N 1S9 • Telephone (604) 987-6714

INVOICE NO. 244

OUR FILE NO. 117-1

TO: Bishop Resources Development Ltd.,
Penthouse 5,
5775 Toronto Rd.,
Vancouver, B.C.
V6T 1X4

DATE Sept. 2, 1986

PERIOD COVERED: August, 1986

RE: Mineral exploration work on Topley project, including field work; management meetings; reviewing, analysing and plotting data and general project management duties.

ENGINEERING SERVICES:

E.S. Holt	13.5 days @ \$450	\$6075.00
E.C. Holt	1.0 day @ \$300	300.00
B.D. Holt	20.5 days @ \$85	1742.50
Sr. Draftsperson	16.0 hrs. @ \$28	448.00
Jr. Draftsperson	4.0 hrs. @ \$15	<u>60.00</u>

Total Engineering Services

\$8,625.50

REIMBURSABLE EXPENSES:

Lou Crossie Travel	\$293.70
Dominion Blueprint	125.95
Texaco	98.04
Holt field expenses	472.50
B.C. Telephone	<u>13.56</u>

Sub total
Plus 10%

\$1003.75
100.38

Total Reimbursable Expenses

1104.13

Bronco rental (Aug.15-31)

450.00

Fly camp rental (July and August)

200.00

Photocopying 31 @ 10¢

3.10

Total

1,757.23

TOTAL AMOUNT DUE

\$10,382.73

Paid; Cheque No. 747
 Bank Royal
 Date Sept 29
 Amount \$10,382.73
 Authorization IC

75% of \$10,382.73 = \$7,787.04

Burns Lake, B.C.
Box 54
V0J 1E0
Phone: 692-3613
Telex: 047-008

Houston, B.C.
Box 567
V0J 1Z0
Phone: 845-2334



TO: BISHOP RESOURCES INC.,
PENTHOUSE 5,
5775 TORONTO ROAD,
VANCOUVER, B. C.

AT: HOUSTON BASE

DATE: JUNE 29th., 1986

ORDER: VERBAL

REPORT: 0206-H

TERMS: NET 30 DAYS

BELL 206B JETRANGER	1.2 hours @ 475.00	\$570.00
FUEL & OIL	@ 78.00	<u>93.60</u>
		\$663.60

APPLY FULL AMT
FOR, QUE, PEN, ARC CLAIMS

Paul Royal # 663 - 29/7/86
\$663.60
Di.

Houston, B.C.
 Box 567
 V0J 1Z0
 Phone: 845-2334



FLIGHT REPORT

No 0206

92-3613
 047-8004

Charterer: BISHOP RESOURCES INC. A/C 2068 C-RAH.

Billing Address: PENTHOUSE 5 5775 TORONTO Rd. VANCOUVER, B.C. V6T 1X4 Date: JUNE 29, JULY 3

Pilot: DAKIN Engineer: PH. 224 1141 Base: HOUSTON

Rate: 475/Hr + FUEL Payment Cash () \$

Charge () TERMS net 30 days on approved accounts.

Service Charge on Overdue Accounts 2% per Month on Past Due Balance.

FUEL & OIL SUPPLIED BY	
WHInc.	CHARTERER

FROM	TO	TIME OFF	TIME LAND	FLIGHT TIME		ADDITIONAL INFORMATION
				HRS.	MINS	
HOUSTON	MT M'CRAE AREA.	0730	0955	.6		FLY CAMP OUT P/U TO HOUSTON
		1605	1640	.6		
Passengers:	Freight lbs.	TOTAL		Total Rev. Hrs.		(HOURS/TENTHS)
<u>2</u>	<u>200</u>			<u>1.2</u>		

I hereby certify that I am authorized to order this flight(s) on behalf of the above named Charterer and accept responsibility for payment in the event of denial of this authority.

Signed for Charterer by:

Print

Signature

[Signature]

Signed for Westland Helicopters by:

[Signature]

Flight Performed in

Province of:

B.C.

Burns Lake, B.C.
Box 54
V0J 1E0
Phone: 692-3613
Telex:047-008



Houston, B.C.
Box 567
V0J 1Z0
Phone: 845-2334

TO: BISHOP RESOURCES INC.
PENTHOUSE 5,
5775 TORONTO RD.
VANCOUVER B.C.

AT: HOUSTON BASE

ORDER: verbal

REPORT: 0215-H

DATED: July 23, & 28, 1986

TERMS: Net 30 days

BELL 206-B JETRANGER	1.1 hours @\$475.00	\$522.50
FUEL & OIL	@ 78.00	<u>85.80</u>
		\$608.30

700.00
Royal
Aug 29
\$ 608.30
all

759.00 - 140.80 = 618.20

Burns Lake, B.C.
Box 454
V0J 1E0
Phone: 692-3613
Telex: 047-8004

Houston, B.C.
Box 567
V0J 1Z0
Phone: 845-2334



FLIGHT REPORT
No 0215 **H**

Charterer: BISHOP ~~M~~ RESOURCES INC. 20675 C. RAN.

Billing Address: PENTHOUSE 5 5775 TORONTO Rd. VAN. B.C. V6T 1X4 Date: JULY 23, 28/86

Pilot: DAKIN Engineer: DH 224 1141 Base: HOUSTON

Rate: 475/HRT FUEL Payment Cash () \$ _____

Charge () TERMS net 30 days on approved accounts.

Service Charge on Overdue Accounts 2% per Month on Past Due Balance.

FUEL & OIL SUPPLIED BY	
WHInc.	CHARTERER
1.1	-

FROM	TO	TIME OFF	TIME LAND	FLIGHT TIME		ADDITIONAL INFORMATION
				HRS.	MINS	
HOUSTON	MCCRAE MTR	1545	1630	.6		ED HILT CAMP
	RETURN CAMP TO HOUSTON	1545	1630	.5		
Passengers:	Freight lbs.	TOTAL		Total Rev. Hrs.		(HOURS / TENTHS)
2	250			1.1		

I hereby certify that I am authorized to order this flight(s) on behalf of the above named Charterer and accept responsibility for payment in the event of denial of this authority.

Signed for Charterer by: _____
Print _____
Signature ESH

Signed for Westland Helicopters by: _____
Print _____
Signature [Handwritten Signature]

Flight Performed in Province of: BC

Burns Lake, B.C.
Box 54
V0J 1E0
Phone: 692-3613
Telex:047-008



Houston, B.C.
Box 567
V0J 1Z0
Phone: 845-2334

TO: BISHOP RESOURCES INC.,
PENTHOUSE 5, 5775 TORONTO RD.,
VANCOUVER, B.C.
V6T 1X4

AT: HOUSTON BASE

ORDER: verbal

REPORT: 0222-H

DATED: August 18, 1986

TERMS: Net 30 days

BELL 206-B JETRANGER 1.1 hours @\$475.00	\$522.50
FUEL & OIL @ 78.00	<u>85.80</u>
	\$608.30

75% of \$608.30 = 456.22

Burns Lake, B.C.
 Box 54
 V0J 1E0
 Phone: 692-3613
 Telex: 047-8004

Houston, B.C.
 Box 567
 V0J 1Z0
 Phone: 845-2334



FLIGHT
 No. 02

Charterer: BISHOP RESOURCES INC. A/C 20673 C. RAIL.

Billing Address: PENTHOUSE, 5775 TORONTO Rd. VAN, B.C. V6T 1X4 Date: AUG 18/86.

Pilot: DAKI W. Engineer: _____ Base: HOUSTON

Rate: 475/HR + FUEL Payment Cash () \$ _____

Charge () TERMS net 30 days on approved accounts.

Service Charge on Overdue Accounts 2% per Month on Past Due Balance.

FUEL & OIL SUPPLIED BY	
WHInc.	CHARTERER
1.1	—

FROM	TO	TIME OFF	TIME LAND	FLIGHT TIME		ADDITIONAL INFORMATION
				HRS.	MINS	
HOUSTON	TOPLEY PAUPATE	1530	1605	.3		
		1620	1640	.2		
		1620	1640	.2		
		1620	1710	.4		
Passengers:	Freight lbs.	TOTAL		Total Rev. Hrs.		(HOURS / TENTHS)
2				1.1		

I hereby certify that I am authorized to order this flight(s) on behalf of the above named Charterer and accept responsibility for payment in the event of denial of this authority.

Signed for Charterer by:

Signed for Westland Helicopters by:

Flight Performed in Province of:

Print

Signature

[Signature]

[Signature]

[Signature]

INVOICE

MIN-EN LABORATORIES LTD.
105 WEST 15TH STREET
NORTH VANCOUVER, B.C.
CANADA V7M 1T2

INVOICE No 1836B

DATE: JULY 17/86

PHONE: (604) 980-5814 OR 988-4524
TELEX: 04-352828

TO : BISHOP RESOURCES DEV.
PENTHOUSE 5, 5775 TORONTO R
VANCOUVER, B.C.
V6T 1X4

FILE No: 6-445
PROJECT:

ATTENTION C. STANLEY/E. HOLT

QTY	DESCRIPTION	UNIT PRICE	AMOUNT
225	SOIL GEOCHEM - 6 ELEMENT TRACE ICF	5.00	1125.00
225	SOIL GEOCHEM - HG, AU	9.00	2025.00
225	SOIL SAMPLE PREP	.85	191.25
* TOTAL *			3341.25

75% of 3341.25
= 2,505.93

Paul Royal # 657 29/7/86

\$ 3341.25 Di

THESE ARE PROFESSIONAL SERVICES AND ARE PAYABLE WHEN RENDERED.
OVER 30 DAYS 2% INTEREST PER MONTH WILL BE CHARGED.

INVOICE

MIN-EN LABORATORIES LTD.
705 WEST 15TH STREET
NORTH VANCOUVER, B.C.
CANADA V7M 1T2

INVOICE No 2046B
DATE: AUGUST 11/86

PHONE: (604) 980-5814 OR 988-4524
TELEX: 04-352828

TO : BISHOP RESOURCES,
PENTHOUSE 5, 5775 TORONTO
VANCOUVER, B.C.
V6T 1X4

FILE No: 6-558
PROJECT: 117-1

ATTENTION C. STANLEY/E. HOLT

QTY DESCRIPTION	UNIT PRICE	AMOUNT
247 SOIL GEOCHEM -- 6 ELEMENT TRACE ICP	5.00	1235.00
247 SOIL GEOCHEM - HG, AU	9.00	2223.00
247 SOIL SAMPLE PREP	.85	209.95
2 ASSAYS - CU, PB, ZN, AG, AU	31.00	62.00
1 ASSAY - TI	11.00	11.00
2 ASSAYS SAMPLE PREP	3.00	6.00
* TOTAL		3746.95

75% of \$3,746.95
= \$2,810.21

THESE ARE PROFESSIONAL SERVICES AND ARE PAYABLE WHEN RENDERED.
OVER 30 DAYS 2% INTEREST PER MONTH WILL BE CHARGED.

Paul Royal #686 Aug 25, 1986
\$3,746.95
20.

Pleasant Valley

MOTEL & RESTAURANT
ON YELLOWHEAD 16 WEST

BOX 1110, HOUSTON, B.C. V0J 1Z0 845-2246



DATE: June 30, 1986

NAME: Bishop Resources Ltd.

INVOICE

ADDRESS: Suite 914-1281 W. Georgia St.

No 2695

Vancouver B.c. V6E 3J7

	Price	Amount
Accommodation:		
E.S. Holt June 29/86 1 night @ 36.00		36.00
Meal Charges		35.25
Phone Charges		6.41
Room Tax		2.52
TOTAL DUE THIS INVOICE		80.18
Paid Royal #633 - 07/15/86 #175.92		
20.18		
+ 95.74 (next invoice)		
<u>175.92</u>		

Check No 192071	Waiter	Guests	BAR TOTAL	15.25
			TOTAL	15.25

Check No 192071	Waiter	Guests	TOTAL	
-----------------	--------	--------	-------	--

PLEASANT VALLEY RESTAURANT

Pleasant Valley

MOTEL & RESTAURANT
ON YELLOWHEAD 16 WEST

BOX 1110, HOUSTON, B.C. V0J 1Z0 845-2246



DATE: July 4, 1986

NAME: Bishop Resources Ltd.

INVOICE

ADDRESS: 5775 Toronto Rd.

No 2706

Vancouver B.C.

	Price	Amount
Accommodation:		
E.S. Holt July 3/86 1 night at 36.00		36.00
Tax		2.52
Meal Charge		37.20
Long Distance Calls		20.02
Total		95.74

11 20 20 0 5

STOCKFORMS 1006-2 MOTEL

THANK YOU FOR YOUR PATRONAGE.

PAID 22 22

92071 TOTAL

PLEASANT VALLEY RESTAURANT

Pleasant Valley
MOTEL & RESTAURANT

ON YELLOWHEAD 16 WEST
 BOX 1110, HOUSTON, B.C. V0J 1Z0 845-2246



DATE: July 31, 1986

NAME: Bishop Resources Ltd.
 ADDRESS: Penthouse 5, 5775 Toronto Rd.
Vancouver B.C. V6T 1X4

INVOICE
No 2726

	Price	Amount
Accomodation:		
E.S. Holt 1 night July 22/86 @ 36.00		36.00
Tax		2.52
Meal Charge		23.05
Phone Charge		10.63
Total		72.20

GUEST REGISTRATION PLEASANT VALLEY MOTEL (1977) LTD.

Box 1110, Houston, B.C.
VOJ 120 845-2246

REGARDLESS OF CHARGE INSTRUCTIONS, THE UNDERSIGNED GUEST ACKNOWLEDGES THE BELOW AS A PERSONAL INDEBTEDNESS

NAME E. S. Holt PLEASE PRINT

COMPANY BISHOP REC.

ADDRESS _____

CITY _____

CREDIT CARD # _____ TYPE _____

SIGNATURE E. S. Holt

RATE \$ <u>36.00</u>	ROOM No. <u>64</u>	No. IN PARTY <u>2</u>
DATE IN <u>7/22/86</u>	DATE OUT <u>7/23/86</u>	CLERK INITIAL <u>M.H.</u>
MAKE OF CAR _____	CAR LICENCE No. _____	PROV. - STATE _____

PAYMENT RECEIVED BY _____

NOTICE TO GUESTS
THIS PROPERTY IS PRIVATELY OWNED AND MANAGEMENT RESERVES THE RIGHT TO REFUSE SERVICE TO ANYONE, AND WILL NOT BE RESPONSIBLE FOR ACCIDENTS, OR INJURY TO GUESTS OR FOR LOSS OF MONEY, JEWELRY OR VALUABLES OF ANY KIND.
11:00 A.M. CHECKING OUT TIME. GUESTS STAYING OVER PLEASE NOTIFY OFFICE. THE MANAGEMENT RESERVES THE RIGHT TO ASSIGN AND REASSIGN THE GUEST TO SUCH ACCOMMODATION AS THE MANAGEMENT SEES FIT.
WE OPERATE UNDER THE HOTEL KEEPERS ACT.

INVOICE THIS IS THE ONLY ITEMIZED ACCOUNT RENDERED

DAYS OCCUPIED	
SUNDAY	
MONDAY	
TUESDAY	<u>36 00</u>
WEDNESDAY	
THURSDAY	
FRIDAY	
SATURDAY	
TOTALS	<u>36 00</u>
% TAX	<u>2 52</u>
Meals AMOUNT	<u>23 05</u>
LOD RECEIVED ACCOUNT	<u>10 63</u>
TOTAL	<u>72 20</u>

1N.

STOCKFORMS 1006-2 MOTEL

THANK YOU FOR YOUR PATRONAGE.

No 234220
CHECK TOTAL
PLEASANT VALLEY RESTAURANT

E. & O. E.

GUEST REGISTRATION PLEASANT VALLEY MOTEL (1977) LTD.

REGARDLESS OF CHARGE INSTRUCTIONS, THE UNDERSIGNED GUEST ACKNOWLEDGES THE BELOW AS A PERSONAL IN-DEBTEDNESS.

NAME Ed Holt - Ben
 PLEASE PRINT
 COMPANY Bishop Resources LTD.
 ADDRESS _____
 CITY _____
 CREDIT CARD # _____ TYPE _____
 SIGNATURE _____

RATE \$ <u>31.00</u>	ROOM NO. <u>65</u>	NO. IN PARTY <u>1-2</u>
DATE IN <u>7/18/86</u>	DATE OUT <u>Aug 21/86</u>	CLERK INITIAL <u>M.H</u>
MAKE OF CAR _____	CAR LICENSE NO. _____	PROV. - STATE _____

PAYMENT RECEIVED BY _____

NOTICE TO GUESTS

THIS PROPERTY IS PRIVATELY OWNED AND MANAGEMENT RESERVES THE RIGHT TO REFUSE SERVICE TO ANYONE, AND WILL NOT BE RESPONSIBLE FOR ACCIDENTS, OR INJURY TO GUESTS OR FOR LOSS OF MONEY, JEWELRY OR VALUABLES OF ANY KIND.
 11:00 A.M. IS CHECKING OUT TIME. GUESTS STAYING OVER PLEASE NOTIFY OFFICE. THE MANAGEMENT RESERVES THE RIGHT TO ASSIGN AND REASSIGN THE GUEST TO SUCH ACCOMMODATION AS THE MANAGEMENT SEES FIT.
 WE OPERATE UNDER THE HOTEL KEEPERS ACT.

Box 1110, Houston, B.C.
 VOJ 120 845-2246 *In to Aug 7*

INVOICE THIS IS THE ONLY ITEMIZED ACCOUNT RENDERED

DAYS OCCUPIED	
SUNDAY	
MONDAY	
TUESDAY	
WEDNESDAY	<i>Aug 7-14 @ 31.00</i>
THURSDAY	<i>Aug 14-21 @ 36.00</i>
FRIDAY	<i>217.00</i>
SATURDAY	<i>252.00</i>
TOTALS	<i>469.00</i>
% TAX	<i>32.83</i>
Meals	<i>374.33</i>
RECEIVED LONG DISTANCE CHARGE	<i>104.95</i>
TOTAL	<i>981.11</i>

STOCK FORMS 1006 - MOTEL

THANK YOU FOR YOUR PATRONAGE.

Invoiced to Aug. 7

Pleasant Valley
MOTEL & RESTAURANT
 ON YELLOWHEAD 16 WEST
 BOX 1110, HOUSTON, B.C. VOJ 120 845-2246



NAME: Bishop Resources
 ADDRESS: Vancouver, B.C.

DATE: Aug. 21/86

INVOICE
 No 2743

	Price	Amount
<i>Accommodation</i>		
<i>Ed + Ben Holt - Room 65</i>		
<i>Aug 7 - 14 7 nights @ 31.00</i>	<i>217.00</i>	
<i>Aug 14 - 21 7 nights @ 36.00</i>	<i>252.00</i>	<i>469.00</i>
<i>Tax</i>		<i>32.83</i>
<i>Meals</i>		<i>374.33</i>
<i>Long Distance Charge</i>		<i>104.95</i>
<i>Total</i>		<i>981.11</i>
<i>75% of 981.11 = 735.83</i>		

APPENDIX C

PROJECT NO: 705 WEST 15TH ST., NORTH VANCOUVER, B.C. V7M 1T2

FILE NO: 6-445/P5+6

ATTENTION: C.STANLEY/E.HOLT

(604)980-5814 OR (604)988-4524

* TYPE SOIL GEOCHEM * DATE: JULY 14, 1986

(VALUES IN PPM)	AG	AS	CU	PR	SB	ZN	HG-PPB	AU-PPB
121 40M	.9	5	12	23	8	49	85	10
122	.8	17	18	35	10	60	55	10
123	.9	2	28	31	10	55	60	5
124	.9	6	17	25	9	54	65	20
125	.7	1	9	13	6	43	75	5
126	.7	1	10	13	5	46	65	10
127 20M	1.0	1	65	25	8	87	145	10
128 20M	.7	1	6	17	5	40	40	20
129	1.0	1	8	11	4	32	50	5
130	.9	1	15	17	8	66	50	5
131	.8	1	17	21	7	68	40	5
132	.7	3	13	22	7	61	70	5
133	.8	1	10	16	6	54	80	10
134	.9	5	14	20	8	82	45	10
135	.9	8	16	22	7	57	45	5
136	.7	2	10	19	6	70	70	5
137	.7	12	16	22	7	43	50	10
138	.9	1	15	18	7	82	75	5
139	.9	13	22	27	9	74	50	5
140	.9	1	12	18	6	50	55	10
141	.9	26	13	35	11	103	80	5
142	.9	1	12	17	7	59	50	5
143	.9	16	15	28	9	62	60	5
144	1.1	1	9	18	6	49	45	5
145	1.0	1	9	14	5	23	45	10
146	.5	1	21	31	9	58	75	10
147	.7	1	17	25	8	63	55	5
148	.9	1	10	17	8	59	65	10
149	.9	2	11	26	9	69	70	5
150	.9	4	12	22	7	60	60	5
151 40M	1.0	10	18	27	7	58	85	10
152	.8	1	11	23	7	47	70	5
153	.8	28	20	31	11	75	100	5
154	.8	9	15	24	8	62	55	10
155	.8	1	12	21	7	66	70	5
156	.7	2	9	12	5	41	60	5
157	.7	1	8	10	5	38	65	5
158	.9	1	7	11	4	50	65	10
159	.4	5	32	32	9	95	70	5
160	.7	3	14	30	9	63	55	5
161 20M	.8	15	8	20	7	39	90	5
162	.8	1	7	17	5	41	55	5
163 20M	.9	1	6	19	5	35	65	5
164	.8	8	11	22	8	58	60	10
165	.7	1	17	22	9	59	75	10
166	.9	1	7	11	4	33	50	5
167	.9	1	14	25	8	64	70	5
168	.8	1	9	15	5	29	55	10
169 20M	.7	14	12	33	10	70	80	10
170	.8	2	8	22	7	43	75	10
171	1.0	9	11	26	8	53	75	5
172	.9	16	11	24	8	49	80	20
173	.9	21	14	25	10	56	105	10
174	.8	13	15	24	9	75	85	5
175	.9	3	7	20	7	54	75	5
176	.9	1	9	15	8	50	100	10
177	.9	1	10	13	5	34	55	15
178	1.0	7	22	25	10	76	85	10
179	.9	19	22	31	10	72	80	5
180	.7	15	17	28	8	61	75	5

PROJECT NO:

705 WEST 15TH ST., NORTH VANCOUVER, B.C. V7M 1T2

FILE NO: 6-445/P7+8

ATTENTION: C.STANLEY/E.HOLT

(604)980-5814 OR (604)988-4524

* TYPE SOIL GEOCHEM * DATE: JULY 14, 1986

(VALUES IN PPM)	AG	AS	CU	PB	SB	ZN	HG-PPB	AU-PPB
181	.6	6	10	23	6	53	110	5
182	.7	1	8	25	6	50	50	5
183	.8	15	8	25	8	62	75	15
184	.9	1	2	14	3	35	80	5
185	.7	1	6	16	4	44	85	5
186 20M	.7	1	10	28	7	65	165	3
187 40M	.3	1	22	39	11	148	95	20
188	.9	17	8	38	8	59	85	15
189	.8	6	10	22	7	54	90	5
190	.9	21	15	39	10	99	75	25
191	.7	1	13	26	8	60	85	5
192	.7	14	11	26	8	79	80	5
193	.7	1	4	15	5	39	70	5
194	.9	6	8	24	7	46	95	10
195	.7	22	14	32	9	71	90	5
196 40M	.6	1	6	20	5	31	65	3
197 40M	.7	9	10	28	7	60	70	5
198 40M	.9	23	9	30	8	50	85	5
199 40M	.9	1	7	23	6	40	70	5
200 40M	.7	44	10	40	10	57	85	10
201 40M	.7	9	15	31	8	55	60	5
202 40M	.8	11	11	26	8	58	85	5
203	.9	13	15	31	11	84	90	5
204	.9	12	7	27	8	49	45	5
205	.9	1	19	35	10	83	100	3
206	.8	1	4	16	4	37	40	25
207 40M	.7	1	5	18	6	43	65	10
208 20M	.8	6	28	40	11	125	105	5
209 40M	.9	29	13	33	9	53	45	5
210 40M	.9	1	19	34	10	90	75	5
211	.7	14	12	31	9	62	65	10
212	.7	5	6	20	5	37	100	5
213 20M	.7	13	34	45	10	105	45	5
214	.6	6	15	31	9	66	110	3
215 40M	.7	20	5	25	7	42	55	10
216	.8	9	16	34	10	70	75	5
217	.8	35	15	36	11	77	65	25
218	.7	10	8	27	8	67	55	5
219	.7	33	10	38	10	61	95	5
220	.7	1	4	21	6	45	50	5
221	.7	1	5	22	9	53	45	15
222 40M	.8	1	6	24	7	53	50	5
223 20M	1.0	4	17	31	8	51	70	5
224	.9	25	10	28	9	54	75	10
225 40M	.3	1	9	28	7	61	65	5

PROJECT NO: 117-1

705 WEST 15TH ST., NORTH VANCOUVER, B.C. V7M 1T2

FILE NO: 6-5589/P1+2

ATTENTION: ED HOLT/CORBY STANLEY

(604)980-5814 OR (604)988-4524

* TYPE SOIL GEOCHEM * DATE: AUGUST 8, 1986

(VALUES IN PPM)	AG	AS	CU	PB	SB	ZN	HG-PPB	AU-PPB
226	.8	1	19	34	5	82	115	10
227	1.1	1	43	32	6	92	80	20
228	3.3	1	223	40	8	118	135	15
229	1.0	1	19	27	6	105	100	5
230	1.6	1	78	40	9	90	110	20
231	.9	1	17	25	4	45	60	5
232	.9	1	18	29	5	79	75	20
233	.6	1	20	32	5	64	70	5
234	.7	1	32	32	5	69	65	15
235	.8	1	21	29	5	74	60	5
236	.7	9	47	44	8	69	65	5
237	.6	6	11	35	7	69	50	40
238	.7	1	11	26	6	58	65	5
239	1.2	3	29	35	7	64	75	5
240 40M	.8	6	35	50	8	70	85	5
241	.7	1	18	30	6	68	80	5
242	1.1	6	17	38	8	67	80	40
243	.8	2	21	41	8	82	95	10
244	.5	1	10	23	5	77	60	10
245	.9	1	11	29	6	68	75	15
246	.7	4	31	37	8	61	60	15
247	1.0	8	274	48	11	70	130	5
248	1.2	11	23	49	10	75	85	20
249	1.0	8	41	53	13	95	140	15
250	.6	1	9	29	6	39	45	10
251	.1	8	23	47	10	91	135	5
252	.7	4	27	43	8	65	100	3
253	.7	1	6	27	6	39	65	20
254	1.7	5	13	32	7	44	85	10
255	.8	1	7	33	7	47	90	5
256	.5	1	3	13	3	11	60	5
257	.7	1	5	24	6	50	65	15
258	.5	1	9	32	9	57	90	25
259	.4	1	4	34	9	38	95	5
260	.3	1	11	36	9	61	75	10
261	.2	1	1	6	2	6	70	5
262	.5	1	4	14	4	18	55	30
263	.6	1	20	36	8	52	80	10
264	.6	1	19	30	7	55	105	25
265	.5	1	8	19	4	26	60	5
266	.6	1	6	17	4	25	45	5
267	.7	1	6	14	4	27	70	20
268	.6	1	11	23	5	32	65	5
269	.5	1	5	16	4	28	65	30
270	.7	1	19	36	8	78	110	15
271	.6	1	10	18	5	34	85	10
272	.8	1	9	23	6	40	75	5
273	1.0	1	19	40	9	67	65	10
274	.7	1	7	23	5	66	55	5
275 20M	.9	37	16	90	15	135	145	5
276	.5	1	14	23	6	50	70	15
277	.6	1	8	17	4	34	85	5
278	.2	6	22	53	12	101	140	5
279	.6	1	18	21	6	47	75	20
280	.8	1	6	17	4	55	70	10
281	.4	1	70	47	10	111	235	5
282	1.0	1	18	21	5	43	65	5
283	1.6	1	94	49	12	117	105	5
284	.8	1	34	27	7	52	60	10
285	.3	1	100	51	17	100	100	15

PROJECT NO: 117-1

705 WEST 15TH ST., NORTH VANCOUVER, B.C. V7M 1T2

FILE NO: 6-5585/P3+4

ATTENTION: ED HOLT, CORBY STANLEY

(604)980-5814 OR (604)988-4524

* TYPE SOIL GEOCHEM * DATE: AUGUST 8, 1986

(VALUES IN PPM)	AG	AS	CU	PB	SB	ZN	HG-PPB	AU-PPB
286	.7	1	65	43	8	67	160	20
287	1.0	1	91	48	10	78	140	5
288	.7	1	40	26	6	46	105	5
289	.9	1	127	40	9	65	100	10
290	.1	6	51	40	8	144	80	35
291	.4	1	267	39	9	71	100	15
292 60M	.4	1	738	52	12	86	145	5
293	1.1	1	148	41	11	83	65	10
294 40M	.3	1	66	41	10	69	115	5
295	.7	1	22	33	9	53	70	50
296 40M	.2	1	38	34	8	89	105	10
297	.6	1	7	27	7	27	80	10
298	.4	1	21	42	10	101	85	5
299 20M	.6	1	7	31	7	36	75	5
300	.8	3	10	35	8	58	145	25
301	1.4	6	1	3	1	1	115	60
302	.5	1	6	21	4	34	65	45
303	1.1	3	8	43	9	60	90	15
304	.7	1	7	26	6	46	45	5
305	.4	1	9	37	9	53	70	30
306	.6	1	6	28	7	39	40	35
307 40M	.6	1	10	34	6	56	50	15
308	.7	1	4	16	4	16	50	20
309	.7	1	12	37	9	65	65	90
310	.7	1	10	34	8	52	140	65
311	.7	1	12	35	9	59	165	5
312 40M	1.1	12	8	41	9	45	65	45
313	.7	1	15	34	9	83	65	30
314	.6	2	7	33	8	36	70	10
315	.2	1	14	35	8	46	105	5
316	.3	1	11	30	6	46	75	5
317	.4	1	10	39	8	48	85	5
318	.7	1	12	32	7	44	80	5
319 20M	.1	1	35	49	10	155	180	45
320	.7	1	17	29	5	47	85	10
321 20M	.5	1	30	41	9	77	130	5
322 20M	.4	1	22	38	6	69	100	10
323	.5	1	13	23	5	37	65	5
324	.5	1	14	25	6	51	65	60
325 40M	.9	1	84	40	9	87	135	15
326	.6	3	13	34	7	44	80	30
327	.8	1	19	36	8	40	65	5
328 40M	.5	1	24	45	11	54	85	5
329	.5	1	22	36	10	59	80	15
330	.6	1	20	39	8	46	65	5
331	.6	1	14	32	7	47	70	5
332 20M	.6	1	49	43	11	61	80	10
333 40M	.5	1	28	38	8	52	40	5
334	.7	1	29	40	8	49	85	5
335	.9	10	99	47	11	59	65	20
336	.7	5	72	50	12	66	80	5
337	.5	3	37	37	8	53	75	10
338 20M	.6	1	199	56	12	104	90	5
339 40M	1.1	1	304	48	11	92	80	5
340	.6	1	137	31	7	43	75	30
341	1.0	1	91	34	7	71	65	10
342	.8	1	20	30	7	58	60	5
343	.8	10	19	36	8	73	70	15
344	.8	1	41	35	8	73	65	5
345	.8	7	40	44	8	75	60	5

PROJECT NO: 117-1

705 WEST 15TH ST., NORTH VANCOUVER, B.C. V7M 1T2

FILE NO: 6-5585/P5+6

ATTENTION: ED HOLT, CORBY STANLEY

(604)980-5814 OR (604)988-4524

* TYPE SOIL GEOCHEM * DATE: AUGUST 8, 1986

(VALUES IN PPM)	AG	AS	CU	PR	SB	ZN	HG-PPB	AU-PPB
346	.9	9	19	33	8	69	100	10
347	.8	22	34	53	11	51	85	5
348	1.0	1	31	33	8	70	85	30
349	.7	1	27	33	6	47	75	5
350 40M	1.5	1	136	48	11	72	105	5
351	.8	3	24	33	7	60	85	20
352	.1	5	52	39	8	261	95	15
353	.6	1	19	24	6	138	70	5
354	.4	1	29	38	8	119	95	5
355	.3	1	29	33	8	64	70	55
356	.5	1	27	35	8	68	65	25
357	.6	1	28	32	9	83	100	10
358	.7	1	19	34	6	57	65	10
359	.6	1	49	31	6	91	75	15
360	.7	1	36	34	7	92	85	70
361	1.1	4	18	33	7	81	90	35
362	.4	1	60	37	7	122	50	30
363	.1	3	28	36	6	104	70	25
364	.6	1	46	37	7	99	70	10
365 20M	1.9	1	293	56	12	80	95	5
366	.5	1	30	33	7	101	55	5
367	.9	1	18	27	6	46	60	40
368	.6	4	44	32	7	119	70	35
369	.4	1	11	23	5	124	65	60
370	.8	1	27	26	6	64	55	15
371	.7	1	11	27	7	82	50	5
372	.9	2	12	29	6	64	65	75
373	.7	1	12	23	5	66	55	25
374	.5	1	12	25	6	52	70	50
375	.4	1	13	27	6	93	65	5
376	.7	1	12	19	4	40	80	5
377	.7	1	9	19	4	44	85	20
378 40M	.7	9	20	38	7	53	90	5
379	1.1	1	34	33	8	82	95	45
380	1.0	1	9	21	5	105	55	50
381	.7	1	22	39	7	60	100	10
382	.5	1	31	39	8	75	65	5
383 40M	.8	4	22	41	8	55	105	15
384	.7	5	18	38	7	60	85	10
385	.9	1	15	26	6	57	75	70
386	1.5	1	71	44	11	82	100	25
387 40M	1.1	1	77	40	9	59	160	45
388	1.0	1	14	29	6	52	115	5
389	.9	1	36	27	6	54	95	15
390	1.3	1	18	28	6	81	65	20
391	1.2	1	95	40	8	69	130	40
392	.9	1	15	32	7	102	65	30
393	1.1	1	24	30	7	60	70	10
394	1.0	1	48	33	8	86	85	5
395	.7	1	33	35	8	50	75	30
396	.6	1	41	42	9	119	55	5
397	1.2	1	75	46	10	101	80	5
398	1.1	1	40	37	10	88	60	10
399	1.0	1	20	41	8	67	70	20
400	.9	3	9	34	8	66	105	15
401	.9	1	22	32	6	59	65	5
402 40M	.6	1	27	38	7	80	60	5
403	.9	1	19	31	7	47	80	10
404 20M	1.9	1	124	57	15	117	90	5
405	.8	6	24	41	8	54	65	10

PROJECT NO: 117-1

705 WEST 15TH ST., NORTH VANCOUVER, B.C. V7M 1T2

FILE NO: 6-5585/P7+8

ATTENTION: ED HOLT/CORBY STANLEY

(604)980-5814 OR (604)988-4524

* TYPE SOIL GEOCHEM * DATE: AUGUST 8, 1986

(VALUES IN PPM)	AG	AS	CU	PR	SB	ZN	HG-PPB	AU-PPB
406	1.1	9	16	26	7	78	80	15
407	.9	3	18	31	8	109	65	35
408 20M	.3	1	56	35	9	97	145	5
409 20M	1.1	1	171	41	12	103	85	60
410	1.3	6	19	30	7	80	60	35
411	.5	1	75	24	7	60	70	25
412	.2	1	301	45	6	82	80	80
413	.8	11	284	35	12	78	70	50
414	.6	1	33	16	5	42	60	50
415	.8	1	32	26	9	54	65	45
416	.8	1	23	16	5	46	55	35
417	.9	1	18	17	6	48	55	10
418	.9	1	33	25	7	56	60	65
419	1.2	4	25	20	6	65	75	40
420	.7	1	23	19	5	94	65	15
421	.9	1	16	10	5	44	65	10
422	1.2	1	18	13	6	59	70	40
423	1.1	1	12	12	4	35	75	55
424	.8	1	24	17	5	52	60	10
425	1.0	1	21	20	4	49	60	10
426	1.1	1	19	15	6	76	50	35
427	.7	1	20	19	6	50	55	25
428 40M	.7	1	19	19	6	48	105	5
429 40M	.7	1	26	31	8	74	70	20
430 40M	.9	1	27	31	8	61	100	15
431	.5	1	24	34	8	105	50	30
432	.8	1	11	14	5	52	40	10
433	.7	1	20	27	9	72	85	15
434	1.0	1	27	27	8	66	70	35
435 40M	1.4	1	48	24	7	58	90	20
436 40M	1.2	1	27	26	6	73	140	15
437	.9	5	31	27	6	100	175	10
438	.7	6	20	22	6	66	125	5
439	.7	5	22	28	6	56	80	35
440	.7	14	27	32	7	61	150	15
441	.7	1	22	24	8	68	95	20
442	.7	1	18	22	6	50	100	40
443	.9	1	23	24	8	43	105	70
444	1.0	1	34	45	9	81	135	5
445	1.2	23	19	26	9	67	100	30
446	1.0	1	24	14	5	53	150	60
447	.8	6	15	21	6	57	85	25
448	1.1	7	17	13	4	44	170	20
449	.8	2	31	22	6	49	95	10
450	.9	7	33	26	9	54	150	30
451	1.4	11	28	38	10	87	245	10

PROJECT NO: 117-1

705 WEST 15TH ST., NDRTH VANCOUVER, B.C. V7M 1T2

FILE NO: 6-5585/P9

ATTENTION: ED HOLT/CORBY STANLEY

(604)980-5814 OR (604)988-4524

* TYPE SOIL GEOCHEM *

DATE: AUGUST 8, 1986

(VALUES IN PPM)	AG	AS	CU	PB	SB	ZN	H6-PPB	AU-PPB
49000E-50600N	.6	1	30	22	5	64	125	10
49000E-50625N20M	.4	1	41	27	6	76	145	20
49000E-50650N	.3	8	29	23	4	62	115	10
49000E-50675N	.5	1	29	22	6	71	100	5
49000E-50700N40M	.8	1	40	33	8	94	85	5
49000E-50725N	.9	1	29	27	5	62	65	5
49000E-50750N	.7	8	30	17	4	44	85	20
49000E-50775N	.9	1	26	21	5	60	130	5
49000E-50800N	.8	1	17	13	4	69	95	5
49000E-50825N	1.3	1	16	24	6	76	140	20
49000E-50850N	1.1	1	19	25	6	75	5	5
49000E-50875N	1.3	1	25	12	4	47	15	15
49000E-50900N	1.1	1	19	22	6	88	5	5
49000E-50925N	.9	18	17	27	7	69	10	10
49000E-50950N	.9	1	26	31	9	123	10	10
49000E-50975N	34.2	9	64	642	12	620	60	60
49000E-51000N	1.4	1	21	23	6	105	20	20
49000E-51025N	1.1	1	17	24	5	86	10	10
49000E-51050N	.9	1	19	22	5	69	10	10
49000E-51075N	.7	1	13	10	3	50	5	5
49000E-51100N	.7	1	15	16	3	63	5	5



HOLT ENGINEERING LTD.

Exploration and Mine Development

August 15, 1987

Mining Recorder,
Omineca Mining Division,
Smithers, B.C.

Dear Sir:

I have reviewed the August, 1987 report by Mr. C.H. Stanley entitled "Reconnaissance Geochemical Soil Survey and Reconnaissance Geological Survey Report on the Spring Group Rad, Kel, Que, Pea, Are Mineral Claims, Omineca Division."

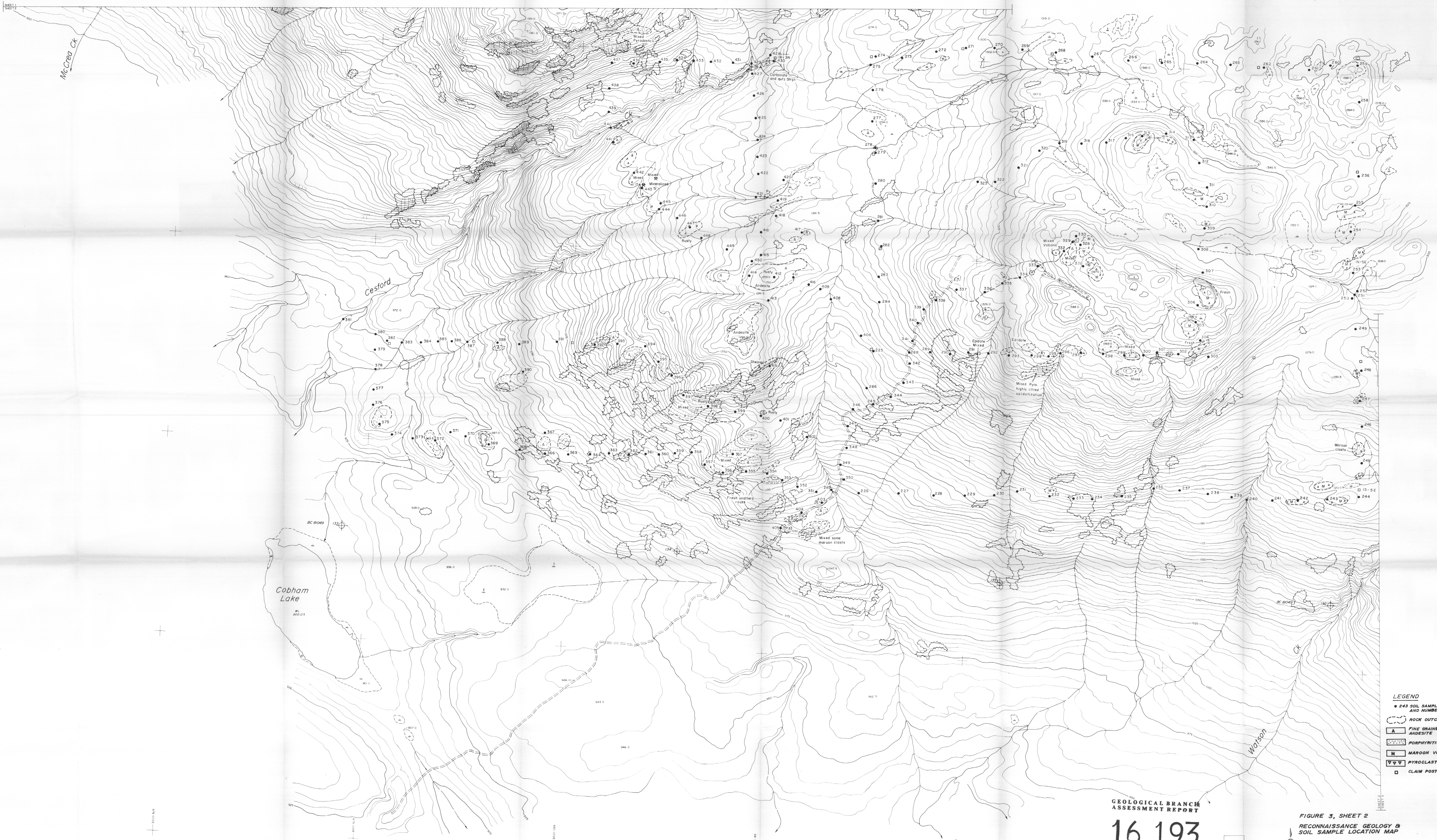
The report accurately describes the reconnaissance geology and geochemical soil sampling program which I and my assistant carried out on the Spring Group of mineral claims.

The drawings illustrating the sample locations and geologic outcrop areas are as prepared by us for submission to Bishop Resources Development.

Yours very truly,



E. S. Holt
Edward S. Holt, P.Eng.



- LEGEND**
- 243 SOIL SAMPLE LOCATION AND NUMBER
 - ROCK OUTCROP AREA
 - ▲ FINE GRAINED DARK GREEN ANDESITE
 - ▨ PORPHYRITIC ANDESITE
 - MAROON VOLCANICS
 - ▽ PYROGLASTICS
 - CLAIM POST OBSERVED

GEOLOGICAL BRANCH
ASSESSMENT REPORT
16,193

FIGURE 3, SHEET 2
RECONNAISSANCE GEOLOGY & SOIL SAMPLE LOCATION MAP

SCALE - 1:5000

CONTOUR INTERVAL - 5m

GRID - UTM

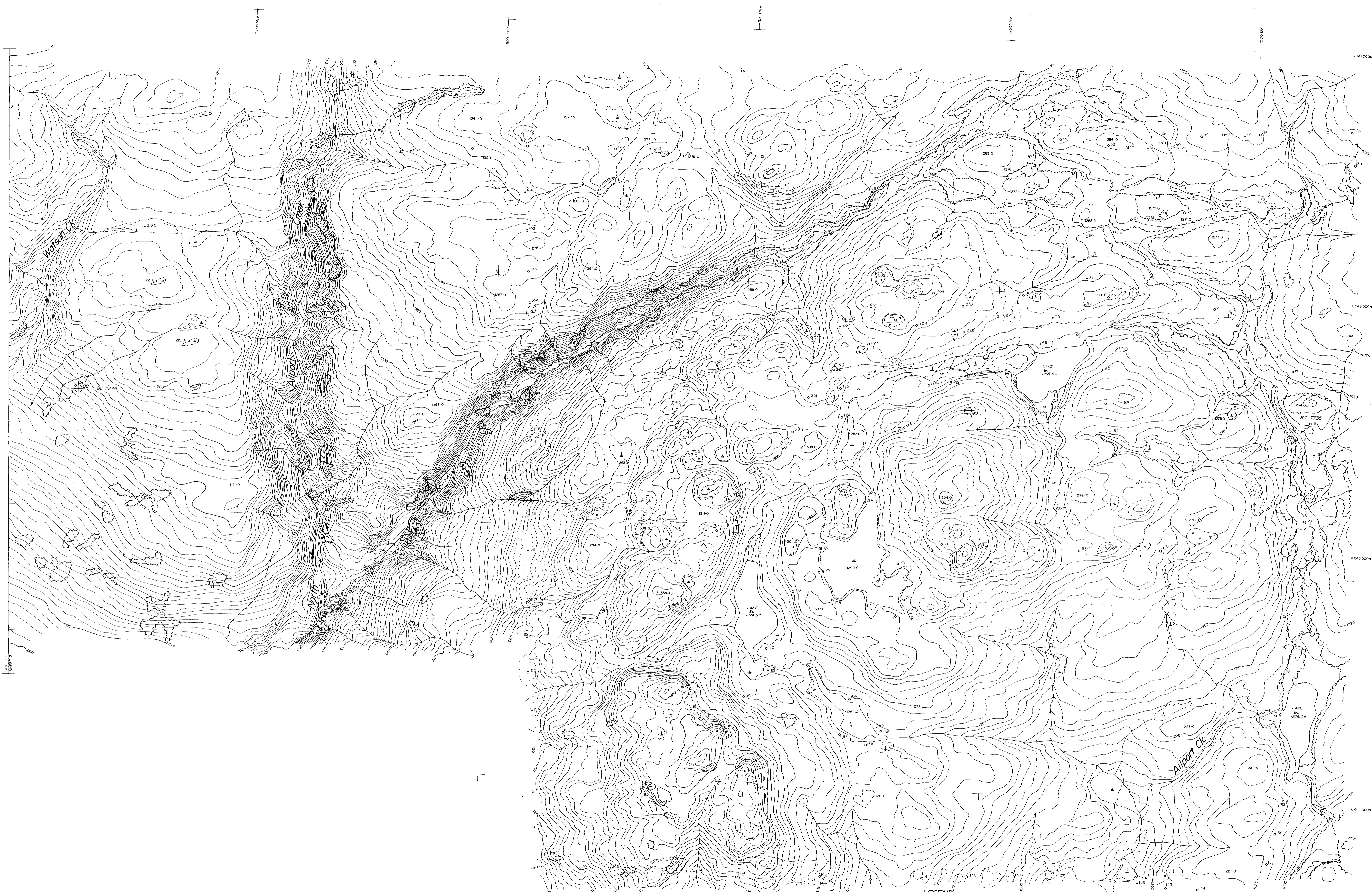
UTM - 24 Q, E of TN

M.A.S. - 24 Q, E of TN

PROJECT NO. 9639, DATE - JUNE, 1986

SHEET 2 OF 2

TOPLEY PROJECT

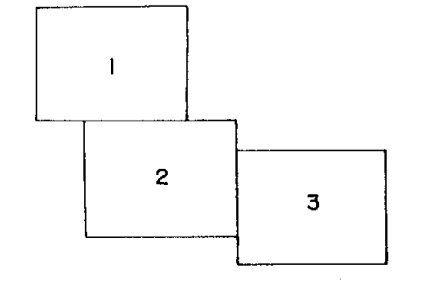


- LEGEND**
- 243 SOIL SAMPLE LOCATION AND NUMBER
 - ROCK OUTCROP AREA
 - A FINE GRAINED DARK GREEN ANDESITE
 - PORPHYRYTIC ANDESITE
 - M MAROON VOLCANICS
 - ▽ PYROCLASTICS
 - CLAIM POST OBSERVED

FIGURE 4, SHEET 3
 RECONNAISSANCE GEOLOGY &
 SOIL SAMPLE LOCATION MAP

GEOLOGICAL BRANCH
 ASSESSMENT REPORT

16,193



SCALE - 1 : 5000

BISHOP RESOURCES DEVELOPMENT LTD.
 TOPYLEY PROJECT

CONTOUR INTERVAL - 5m.
 GRID - UTM
 UTM - 2°15' E OF TN.
 MAG - 24°51' E OF TN.
 PROJECT NO. - 8639, DATE - JUNE, 1986
 SHEET 3 OF 3