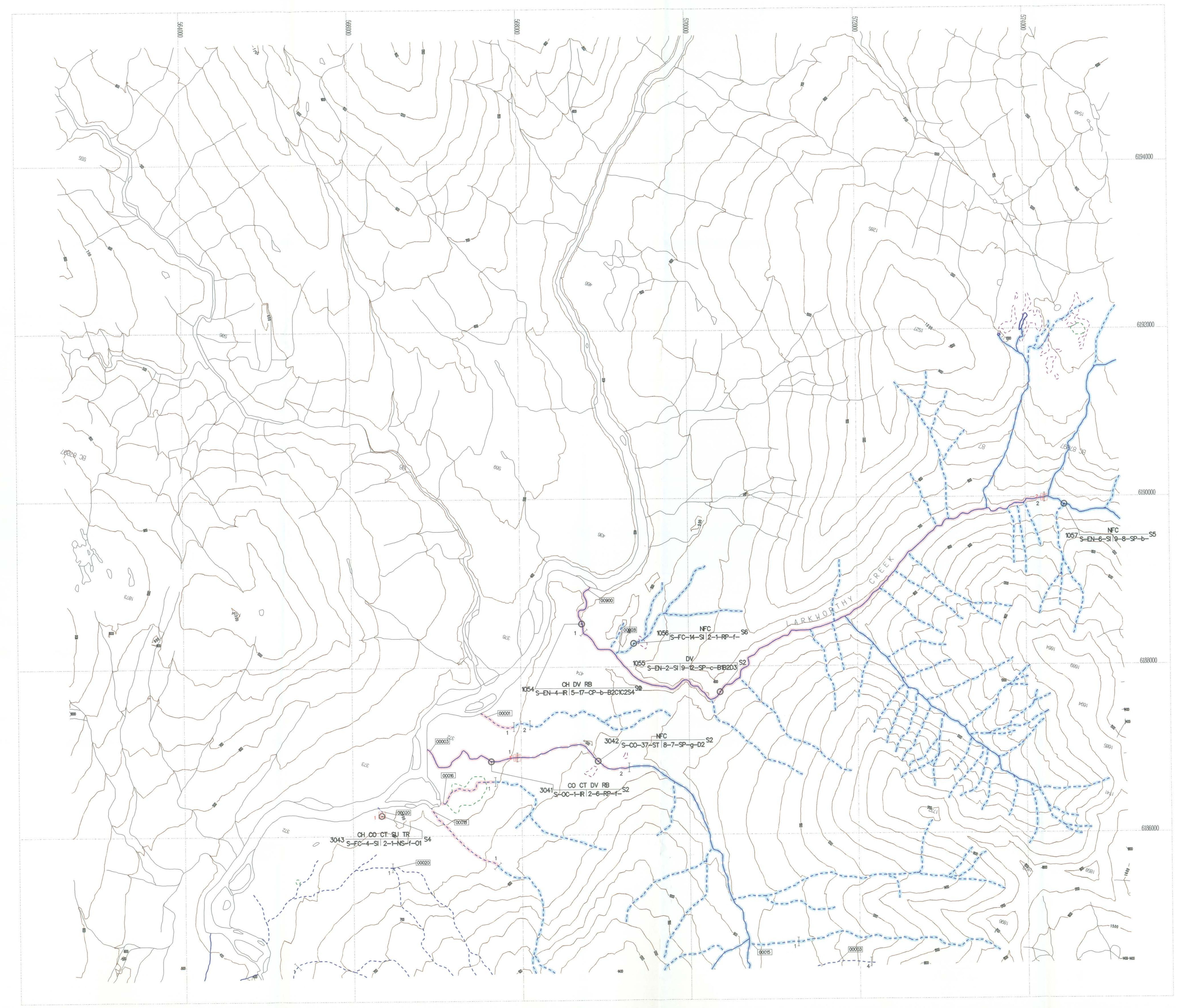
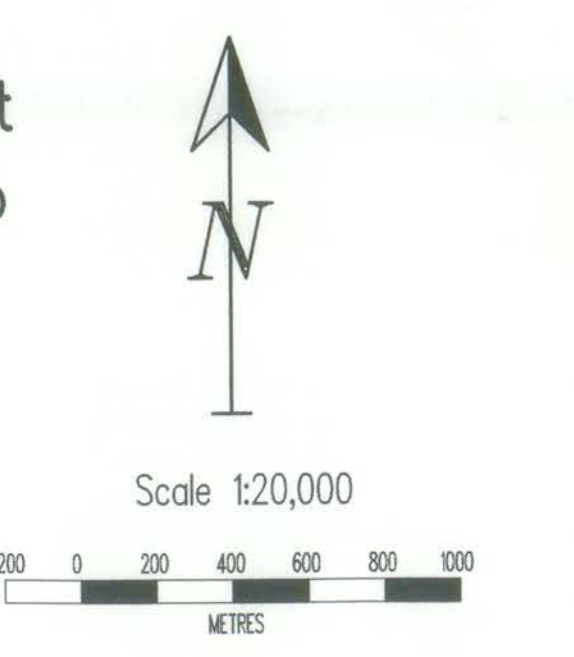


Reconnaissance (1:20,000) Fish and Fish Habitat
Stream Inventory in the Kispiox Working Group

**SKEENA RIVER &
LARKWORTHY CREEK**

Date: 1998/06/15 (yyyy/mm/dd)

Company: SJS of TRITON Environmental Consultants Ltd.



Stream Information Summary

123-12345-1234- Watershed Code

Stream Summary Symbol
Sample Site ID: S-PC-3-R-12-12-PP-g-C3C453
Stream(S) of Wetland(W): CO DV RB
Fish Code(s): S1
Stream Classification: S1

Forest Practices Code Riparian Classes (Stream Classification)	Riparian Class	Reserve Zone(m)	Management Zone(m)	Management Area(m)
S1	50	20	70	
S2	30	20	50	
S3	20	20	40	
S4	0	30	30	
S5	0	30	30	
S6	0	20	20	

Obstructions

- Beaver Dam
- Cascade
- Dam
- Falls
- Culvert
- Persistent Debris Accumulation

Features

- Eroded Bank
- Alluvial Fan
- Colluvial Fan
- Talus Cone
- Rock Outcrop
- Slumping Bank
- Slump
- Bedrock-Confinement
- Landslide Debris
- Landslide Area
- Dewatered Section
- Braided Stream
- Backwater
- Wetland/Marsh
- Spring
- Groundwater
- Tributary
- Side Channel

Enhancement/Management Activities

- Fish Hatchery
- Fishway
- Incubation Box
- Spawning Channel
- Weir
- Waste Regulated Site Aquaculture
- Waste Regulated Site Hatchery
- Counting Fence
- Fisheries Sensitive Zone

Hydrometric Stations

- Flow Active
- Flow Inactive
- Well
- Both Active
- Both Inactive
- Level Active
- Level Inactive

Base Map Anomalies

- Field-Identified Stream
- Base Map Discontinuity
- No Visible Channel

Fish Presence

- Fish Presence - Sampled
- Fish Presence - Inferred
- No Fish Presence - Sampled
- No Fish Presence - Inferred

TRIM Features

River/Stream	Swamp	Icefield
River/Stream - intermittent	Marsh	Glacier
Lake	Island	Road - 1 lane, loose surface
Lake - intermittent	Sand/Gravel Bar	Road - rough surface
Lake - indefinite	Coastline	Index Contour (100m interval)

* hydrological features outside the project study area appear as thin black lines

Fish Species

CODE	DESCRIPTION	CODE	DESCRIPTION	CODE	DESCRIPTION
BT	Bull Trout	NS	Not Sampled		
CH	Chinook	RB	Rainbow Trout		
CO	Coho	SU	Suckers, General		
CT	Cutthroat Trout	TR	Trout, General		
DV	Dolly Varden	TSP	Threespine Stickleback		
NFC	No Fish Caught				

SOURCE: MELP

Stream Summary Symbol Information

CHANNEL CHARACTERISTICS	DRAINAGE PATTERN	DEPOSITIONS
CODE DESCRIPTION	CODE DESCRIPTION	CODE DESCRIPTION
A Fishless/Characteristics	M Morphology	S1 Homogenous bed features
NS not specified	F fines	S2 sediment fingers
NVC no visible channel	G gravel	S3 sediment wedges
EN entrenched	C cobble	S4 extensive bars
CO confined	B boulder	S5 extensively scoured zones
FC frequently confined	R bedrock, blocks, etc.	
OC occasionally confined	Morphology	
UC unconfined	SP riffle pool	
NA not applicable	CP cascade pool	
	SP step pool	
	NA not applicable	
	Channel Pattern	
M lateral meanders	M lateral meanders	
ME irregular meanders	ME irregular meanders	
R irregular wandering	R irregular wandering	
S sinuous	S sinuous	
ST straight	ST straight	

Disclaimer

The Province has not accepted the contents of this product for the purposes of the Forest Practices Code, and reserves the right to dispute the validity of summarized results. The Province does not necessarily agree with the classification assigned to any individual stream reach, for use in logging plans, silviculture prescriptions or any other application.

Inventory Source Information Codes

CODE	DESCRIPTION	CODE	DESCRIPTION	CODE	DESCRIPTION
SPIC	Site Map	AP	Aerial Photograph	AP	Aerial Photograph
TR	1:50,000 TRM Map	AP	Aerial Photograph	AP	Aerial Photograph
NIS	1:50,000 NIS Map	AP	Aerial Photograph	AP	Aerial Photograph
CH	Other No Source	AP	Aerial Photograph	AP	Aerial Photograph
SIC	Stream System	AP	Aerial Photograph	AP	Aerial Photograph
IN	Field Inventory	AP	Aerial Photograph	AP	Aerial Photograph
SS	Summary	AP	Aerial Photograph	AP	Aerial Photograph
N/A	Not Applicable	AP	Aerial Photograph	AP	Aerial Photograph
OH	Other	AP	Aerial Photograph	AP	Aerial Photograph

Inventory Source Information

BASE: TR STR SYM: INV
 LOC: FDG LK SYM: N/A
 HAB: INV
 FISH: INV
 DATE INV: 1997/09/22 INV MGMT: MELP

Adjoining Sheet Index in the British Columbia Geographic System

093M00	093M01	093M02
093M03	093M04	093M05
093M06	093M07	093M08

Base Map Information

Projection: Universal Transverse Mercator
 Datum: North American Datum - NAD83
 UTM Zone: 9