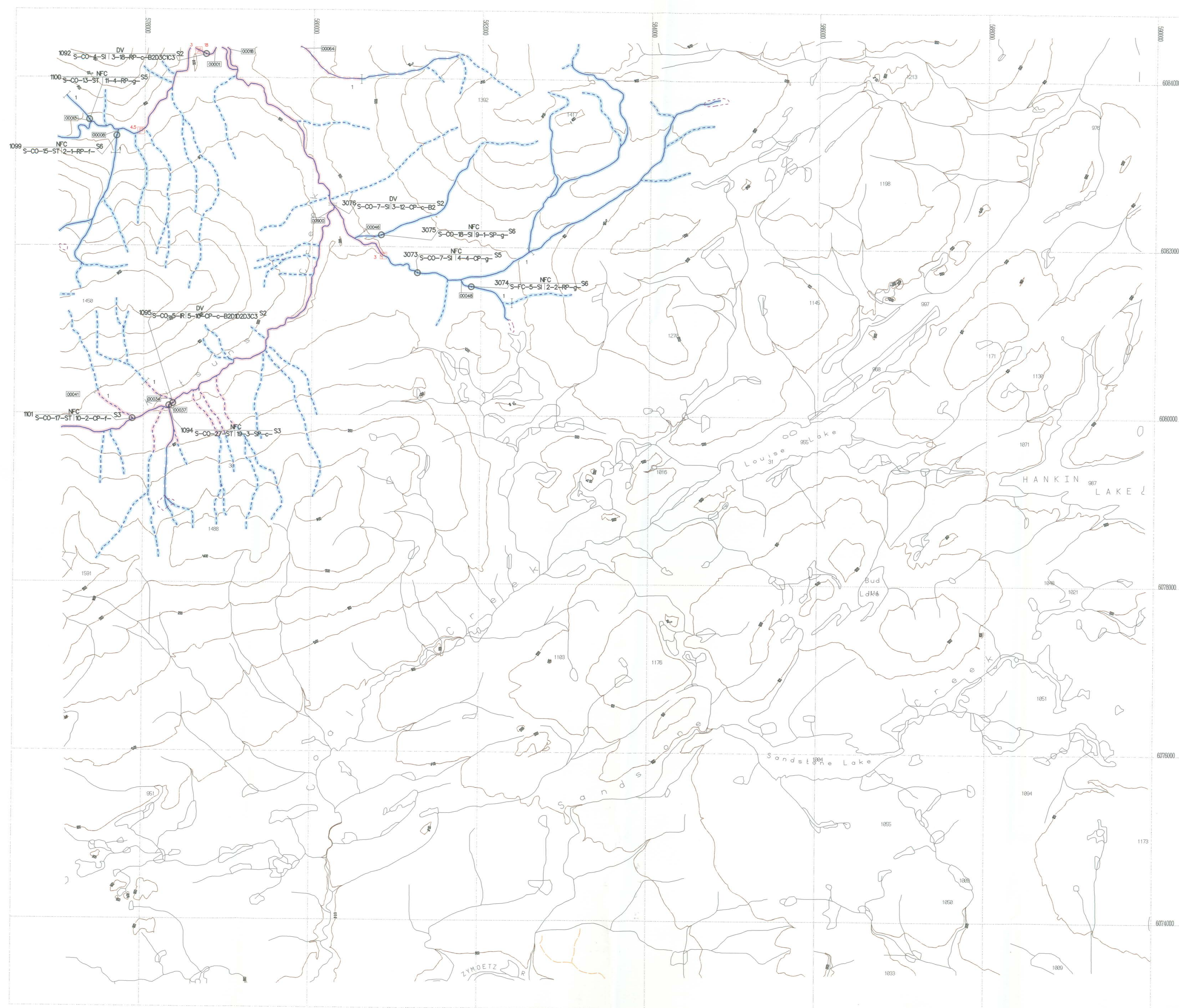


Reconnaissance (1:20,000) Fish and Fish Habitat
Stream Inventory in the Kispiox Working Group

KITSUNS CREEK

Date: 1998/06/15 (yyyy/mm/dd)

Company: SJS of TRITON
Environmental Consultants Ltd.Scale 1:20,000
METRES

Stream Information Summary

123-12345-1234 Watershed Code

Stream Summary Symbol

Sample Site ID 15-PC-3-R-2-12-PP-9-C3C4S3

Stream Classification

Forest Practices Code

Riparian Classes (Stream Classification)

Riparian Class

Reserve Zone(m)

Management Zone(m)

Management Area(m)

S1 50 20 70

S2 30 20 50

S3 20 20 40

S4 0 30 30

S5 0 30 30

S6 0 20 20

Obstructions

Beaver Dam

Cascade

Dam

Falls

Culvert

Persistent Debris Accumulation

Features

Eroded Bank

Alluvial Fan

Colluvial Fan

Talus Cone

Rock Outcrop

Slumping Bank

Slump

Bedrock-Confined

Landslide Debris

Landslide Area

Dewatered Section

Braided Stream

Backwater

Welland/Warsh

Spring

Groundwater

Tributary

Side Channel

Enhancement/Management Activities

Fish Hatchery

Fishway

Incubation Box

Spawning Channel

Weir

Waste Regulated Site Aquaculture

Waste Regulated Site Hatchery

Counting Fence

Fisheries Sensitive Zone

Hydrometric Stations

Flow Active

Flow Inactive

Both Active

Both Inactive

Level Active

Level Inactive

Fish Presence - Sampled

Fish Presence - Inferred

No Fish Presence - Sampled

No Fish Presence - Inferred

TRIM Features

- ☒ River/Stream
- ☒ River/Stream - intermittent
- ☒ Lake
- ☒ Lake - intermittent
- ☒ Lake - indefinite
- ☒ Swamp
- ☒ Marsh
- ☒ Island
- ☒ Sand/Gravel Bar
- ☒ Coastline
- ☒ Icefield
- ☒ Glacier
- ☒ Road - 1 lane, loose surface
- ☒ Road - rough surface
- ☒ Index Contour (100m interval)

* hydrological features outside the project study area appear as thin black lines

Fish Species

CODE	DESCRIPTION	CODE	DESCRIPTION	CODE	DESCRIPTION
BT	Bull Trout	NS	Not Sampled		
CH	Chinook	RS	Rainbow Trout		
CO	Coho	SU	Suckers, General		
CT	Cutthroat Trout	TR	Trout, General		
DV	Dolly Varden	TSB	Threespine Stickleback		
NFC	No fish caught				

SOURCE: MELP

Stream Summary Symbol Information

REACH CHARACTERISTICS		CHANNEL MORPHOLOGY		OBSTRUCTIONS	
CODE	DESCRIPTION	CODE	DESCRIPTION	CODE	DESCRIPTION
A) Features		A) Features		B) Morphology	
NS	Not specified	F	fine	C1	extensive riffles or cascades
NVC	No visible channel	G	gravel	C2	minim. pool area
Confinement		C	cobble	C3	elevated mid channel bar
EN	entrained	B	boulder	C4	multiple channel or braid
CF	confined	R	bedrock, blocks, etc.	D1	detritus
FC	frequently confined	Morphology		Large Woody	
OC	occasionally confined	RP	rifle pool	D1	small woody debris
UC	unconfined	CP	cascade pool	D2	large woody debris
NA	not applicable	SP	step pool	D3	recently formed LWD jams
Channel Pattern		OBSTRUCTIONS		Sedimentation	
TM	tortuous meanders	Drain	S1	homogenous bed texture	
IM	irregular meanders	OT	beaver dams	S2	sediment fingers
MR	regular meanders	Ranks	S3	sediment wedges	
R	irregular wandering	B1	dominated channels	S4	extensive bars
S	sinuous	B2	eroding banks	S5	extensively scoured zones
ST	straight	RS	rocky		

Disclaimer

The Province has not accepted the contents of this product for the purposes of the Forest Practices Code, and reserves the right to dispute the validity of summarized results. The Province does not necessarily agree with the classification assigned to any individual stream reach, for use in logging plans, silviculture prescriptions or any other application.

Inventory Source Information Codes

CODE	DESCRIPTION	CODE	DESCRIPTION	CODE	DESCRIPTION	CODE	DESCRIPTION
BASE	Map	AP	Aerial Photography	AP	Aerial Photography	BASE	Map
TR	1:25,000 TRM Map	AP	Aerial Photography	AP	Aerial Photography	TR	1:25,000 TRM Map
NFC	Not Applicable	AP	Aerial Photography	AP	Aerial Photography	NFC	Not Applicable
OTR	Other Map Source	AP	Aerial Photography	AP	Aerial Photography	OTR	Other Map Source
SS	Summary	AP	Aerial Photography	AP	Aerial Photography	SS	Summary
OTR	Other	AP	Aerial Photography	AP	Aerial Photography	OTR	Other
SS	Summary	AP	Aerial Photography	AP	Aerial Photography	SS	Summary
OTR	Other	AP	Aerial Photography	AP	Aerial Photography	OTR	Other
SS	Summary	AP	Aerial Photography	AP	Aerial Photography	SS	Summary
OTR	Other	AP	Aerial Photography	AP	Aerial Photography	OTR	Other

Inventory Source Information

BASE: TR STR SYM: INV
LOC: FDG LK SYM: N/A
HAB: INV
FISH: INV
DATE INV: 1997/09/22 INV MGMT: MELP

Adjoining Sheet Index in the
British Columbia Geographic System

093L081	093L082	093L083
093L081	093L082	093L083
093L071	093L072	093L073

Base Map Information

Projection: Universal Transverse Mercator

Datum: North American Datum - NAD83

UTM Zone: 9