

Reconnaissance (1:20,000) Fish and Fish Habitat  
Stream Inventory in the Kispix Working Group

MOONLIT CREEK

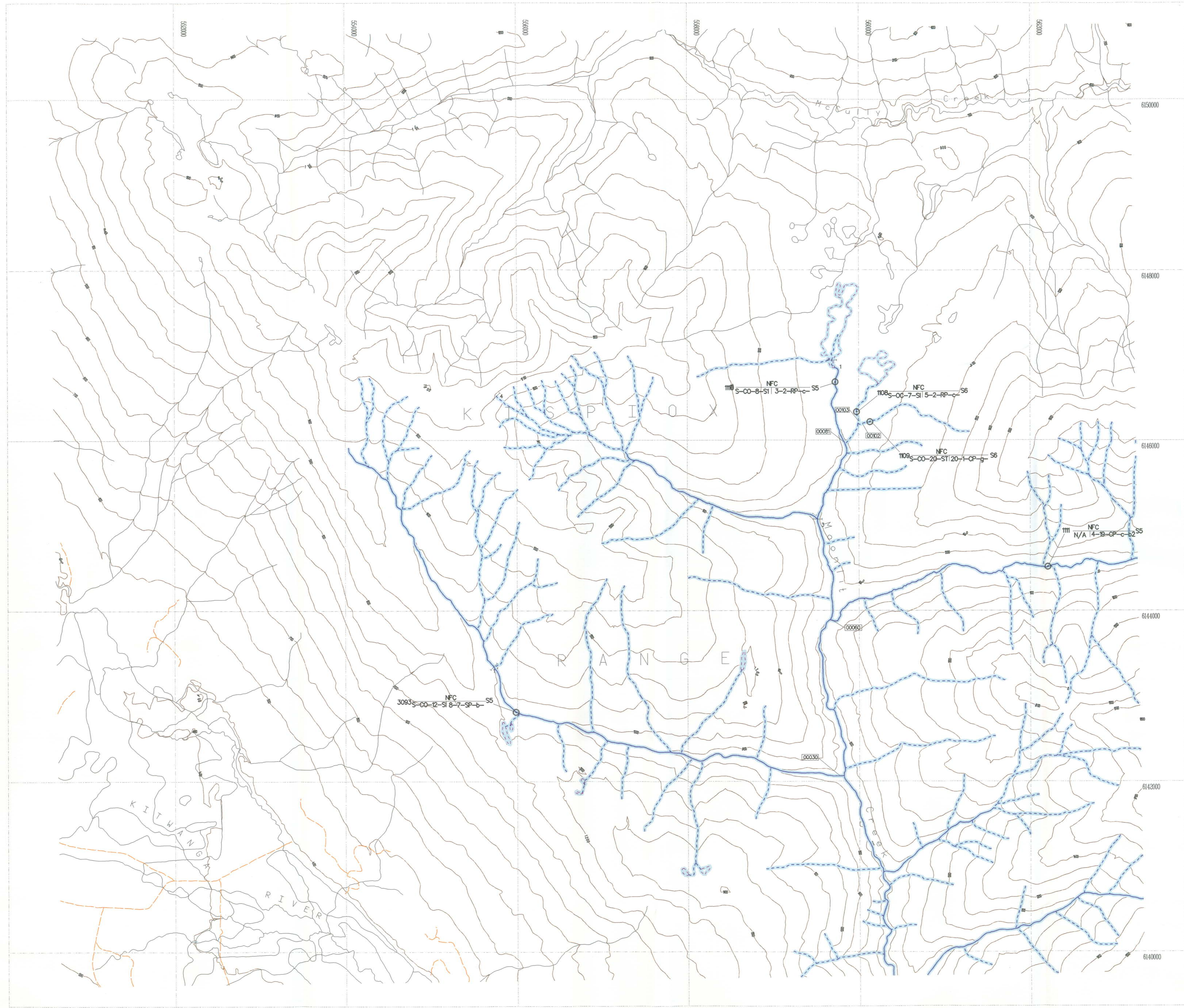


Scale 1:20,000



Date: 1998/06/11 (yyyy/mm/dd)

Company: SJS of TRITON Environmental Consultants Ltd.



### Stream Information Summary

123-12345-1234 Watershed Code

**Stream Summary Symbol**

Sample Site ID: S-PC-3-R-12-12-RP-9-C30453

Stream(S) Welland(W): CO DV RB

Fish Code(s): SI

Stream Classification: Forest Practices Code Riparian Classes (Stream Classification)

Riparian Class	Reserve Zone(m)	Management Zone(m)	Management Area(m)
S1	50	20	70
S2	30	20	50
S3	20	20	40
S4	0	30	30
S5	0	30	30
S6	0	20	20

**Obstructions**

- Beaver Dam
- Cascade
- Dam
- Falls
- Culvert
- Persistent Debris Accumulation

**Features**

- Eroded Bank
- Alluvial Fan
- Colluvial Fan
- Talus Cone
- Rock Outcrop
- Slumping Bank
- Slump
- Bedrock-Confinement
- Landslide Debris
- Landslide Area
- Dewatered Section
- Braided Stream
- Backwater
- Wetland/Marsh
- Spring
- Groundwater
- Tributary
- Side Channel

**Enhancement/Management Activities**

- Fish Hatchery
- Fishway
- Incubation Box
- Spawning Channel
- Weir
- Waste Regulated Site Aquaculture
- Waste Regulated Site Hatchery
- Counting Fence
- Fisheries Sensitive Zone

**Hydrometric Stations**

- Flow Active
- Flow Inactive
- Well
- Both Active
- Both Inactive
- Level Active
- Level Inactive

**Base Map Anomalies**

- Field-Identified Stream
- Base Map Discontinuity
- No Visible Channel

**Legend:**

- Fish Presence - Sampled
- Fish Presence - Inferred
- No Fish Presence - Sampled
- No Fish Presence - Inferred

### TRM Features

River/Stream	Swamp	Icefield
River/Stream - intermittent	Marsh	Glacier
Lake	Island	Road - 1 lane, loose surface
Lake - intermittent	Sand/Gravel Bar	Road - rough surface
Lake - indefinite	Coastline	Index Contour (100m interval)

\* hydrological features outside the project study area appear as thin black lines

### Fish Species

CODE	DESCRIPTION	CODE	DESCRIPTION	CODE	DESCRIPTION
BT	Bull Trout	NS	Not Sampled		
CH	Chinook	RS	Rainbow Trout		
CO	Coho	SU	Suckers, General		
CT	Cutthroat Trout	TR	Trout, General		
DV	Dolly Varden	TSS	Threespine Stickleback		
NFC	No Fish Caught				

SOURCE: MELP

### Stream Summary Symbol Information

CODE	DESCRIPTION	CODE	DESCRIPTION	CODE	DESCRIPTION
BT	Bull Trout	NS	Not Sampled		
CH	Chinook	RS	Rainbow Trout		
CO	Coho	SU	Suckers, General		
CT	Cutthroat Trout	TR	Trout, General		
DV	Dolly Varden	TSS	Threespine Stickleback		
NFC	No Fish Caught				

SOURCE: MELP

**Disclaimer**

The Province has not accepted the contents of this product for the purposes of the Forest Practices Code, and reserves the right to dispute the validity of summarized results. The Province does not necessarily agree with the classification assigned to any individual stream reach, for use in logging plans, silviculture prescriptions or any other application.

### Inventory Source Information Codes

CODE	DESCRIPTION	CODE	DESCRIPTION	CODE	DESCRIPTION
BT	Bull Trout	NS	Not Sampled		
CH	Chinook	RS	Rainbow Trout		
CO	Coho	SU	Suckers, General		
CT	Cutthroat Trout	TR	Trout, General		
DV	Dolly Varden	TSS	Threespine Stickleback		
NFC	No Fish Caught				

### Inventory Source Information

BASE: TR STR SYM: INV

LOC: FDG LK SYM: N/A

HAB: INV

FISH: INVD

DATE INV: 1997/09/22 INV MONT: MELP

### Adjoining Sheet Index in the British Columbia Geographic System

103P.059	103P.060	083M051
103P.049	103P.050	083M041
103P.039	103P.040	083M031

**Base Map Information**

Projection: Universal Transverse Mercator

Datum: North American Datum - NAD83

UTM Zone: 9