

**Fish and Fish Habitat Inventory
Project/Interpretive Map**

Sub-basins to Babine and Fulton lakes

Watershed Codes: 480 and 480-697200

Map 3.0 of 3.0

Mapsheet: 093L.099

Scale 1:20000

200 0 200 400 600 800 Meters

Contour Interval: 20 m Projection: UTM Zone 9, NAD83

Inventory by: SKR Consultants Ltd.
Mapping by: SKR Consultants Ltd.

March 12, 2002

Site Data Symbol

Site Number: 11
Fish code(s): CO DV RB
2-12.1-RPq-C3C4S3

Site Gradient: 11
Width: 11
Morphology: 11
Sediment: 11
Disturbance: 11

Lake Summary Symbol

Lake (L): 11
Wetland (W): 11
Sub-area: 11
Maximum Depth: 11
pH: 11
Conductivity: 11
TDS: 11
Littoral Area: 11

L: 175-8.0-8.8-29 | 20-15
CAS CO DV PCC RB SK TS RB

Reach Data Symbol

Stream (S): 11
Wetland (W): 11
Confinement: 11
Gradient: 11
Pattern: 11

S-FC-3-R

Displayed only for reaches sampled
(located ~200 metres downstream of reach break)

Average gradient (%) of entire reach
(located ~200 metres downstream of reach break)

200

fisheries sensitive zone

stream reach boundary

side channel

Physical Features

150

Beaver Dam
River/Stream - Dewatered
Cascades
Falls
Culvert

Historical Information

REF 52: CO CH RB
Fish code(s)

Hydrometric station

12AB123

ILP (Interim Location Point) - Stream Identifier
(located at edges of TRIM Maps)

80000

ILP (Interim Location Point) - Stream Identifier
(located at uppermost reach of each stream)

80000

Fish Bearing Stream
Non-Fish Bearing Stream
Suspected Non-Fish Bearing Stream
Suspected Fish Bearing Stream

Lake - Definite
Lake - Indefinite
Lake - Intermittent
Wetland
Island - Definite

Road (Gravel Undivided)
Road (Gravel Undivided) - 2 lanes
Road (Paved Divided)
Trail
Rail Line

Study Area Boundary

Scale 1:250000

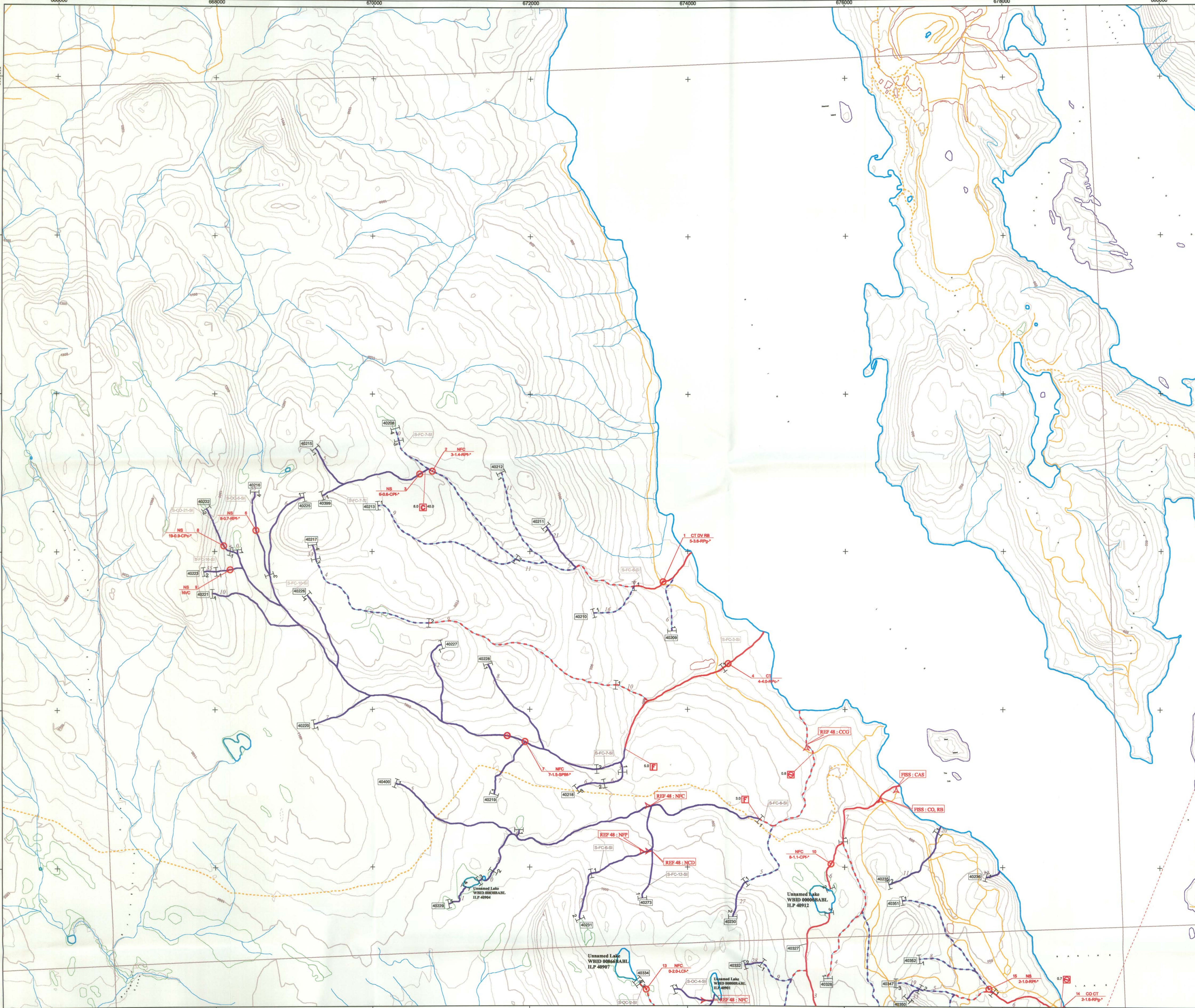
093M.009	093M.010
093L.089 Map 1 of 3	093L.100 Map 2 of 3
093L.079	093L.080

Source Information

BASE: TR
LOCATION INFORMATION: INV
HABITAT INFORMATION: INV
FISH INFORMATION: INV
STREAM SYMBOL: INV
LAKE SYMBOL: FDE
DATE OF INVENTORY: 2001
INVENTORY MANAGEMENT: SKR Consultants Ltd.

Disclaimer

This product has been accepted as being in accordance with approved standards within the limits of Ministry quality assurance procedures. Users are cautioned that interpreted information on this product developed for the purposes of the Forest Practices Code Act and Regulation, for example stream classifications, is subject to review by a statutory decision maker for the purposes of determining whether or not to approve an operational plan.



Fish Species/Sampling Codes		References	
CODE	COMMON NAME	CODE	COMMON NAME
NCD	Non-Classified Drainage	BT	Bull Trout
NVC	No Visible Channel	CAS	Prickly Sculpin
NFC	No Fish Captured	CCG	Slimy Sculpin
NFP	No Fish Present	CO	Coho
NS	Not Sampled	CT	Cutthroat Trout
		DV	Dolly Varden char
		RB	Rainbow Trout
		SP	Unidentified Species

REF 48 SKR Consultants Ltd. 1997. Operational Inventory in the Tanglechain IRM Unit 1996: CP 416-12, 416-13, 416-24, 416-25, 416-28, 417-71, 435-1, 435-2, 453-1. Unpublished report prepared for Houston Forest Products, Houston, B.C.

FISS Fisheries Inventory Stream System. Maps and Database of Department of Fisheries and Oceans Canada and B.C. Environment.