

Site Data Symbol
Site Number Fish code(s)
11 CO DV RB
2-12.1-RPg-C3C4S3
Site Gradient
Width
Morphology
Substrate
Disturbance

Lake Summary Symbol
Lake (L)
L-175.8-0.6-8-29
CAS CO DV PCC RB SK TSB
Lake (L)
L-175.8-0.6-8-29
CAS CO DV PCC RB SK TSB
Lake (L)
L-175.8-0.6-8-29
CAS CO DV PCC RB SK TSB

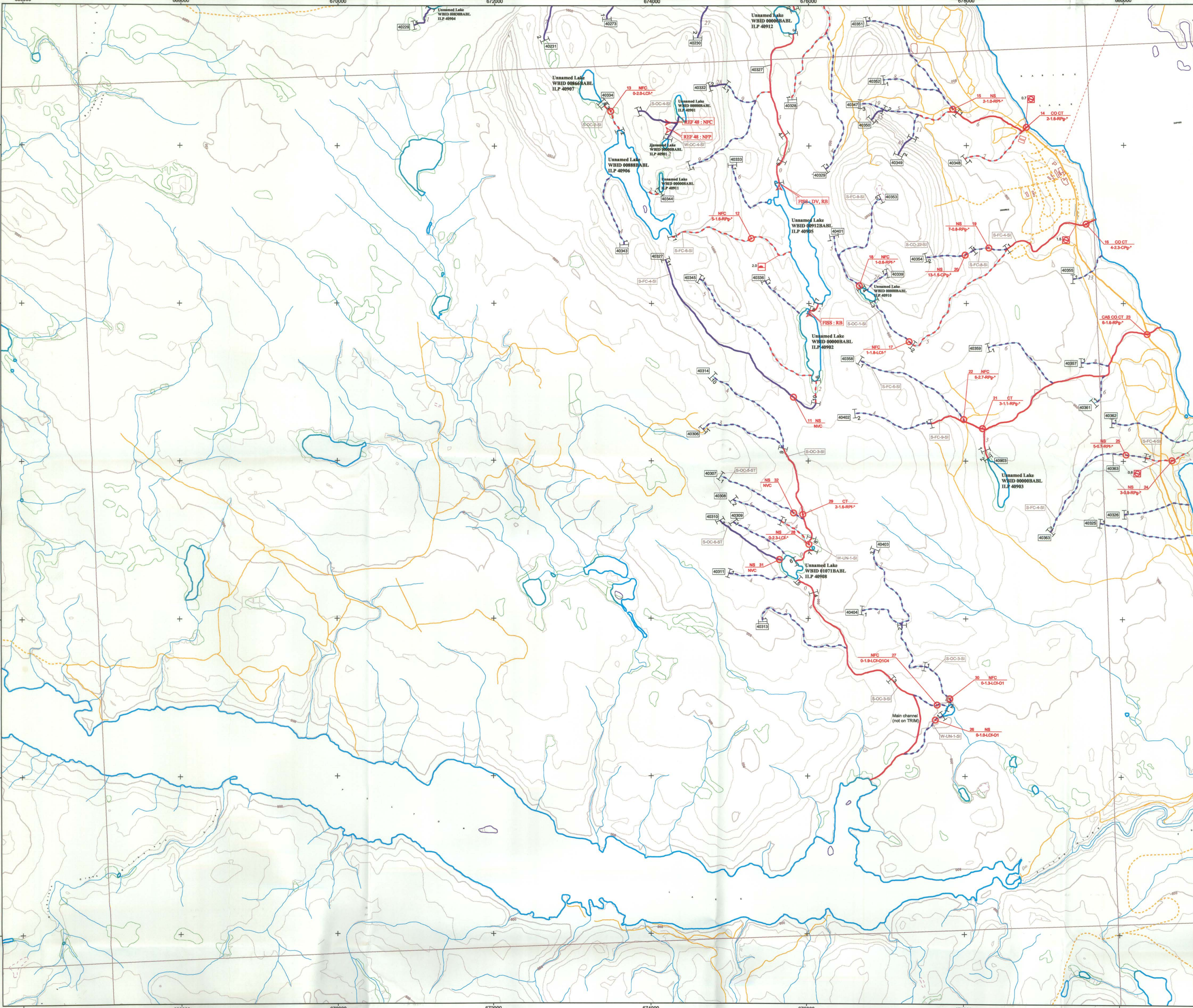
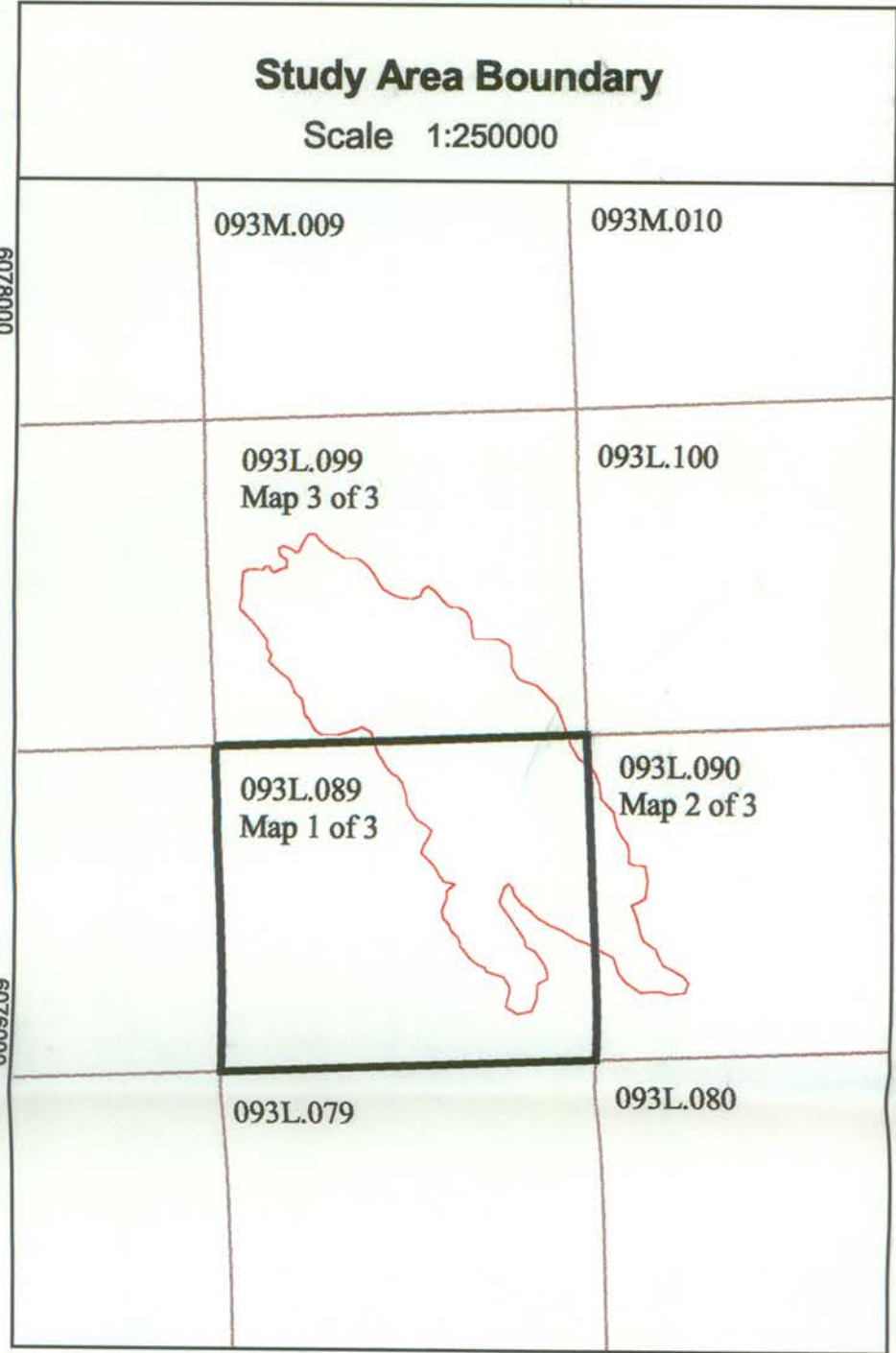
Reach Data Symbol
Stream (S)
Wetland (W)
Confinement
Gradient
Pattern
Fish code(s)
12
200
Average gradient (%) of entire reach
(located ~200 metres downstream of reach break)
fisheries sensitive zone
stream reach boundary
side channel

Physical Features
150
Beaver Dam
River/Stream - Dewatered
Cascades
Falls
Culvert

Historical Information
REF 52 : CO CH RB
Fish code(s)

Hydrometric station
12AB123
ILP (Interim Location Point) - Stream Identifier
(located at edges of TRIM Maps)
ILP (Interim Location Point) - Stream Identifier
(located at uppermost reach of each stream)
Fish Bearing Stream
Non-Fish Bearing Stream
Suspected Non-Fish Bearing Stream
Suspected Fish Bearing Stream

Legend
Lake - Definite
Lake - Indefinite
Lake - Intermittent
Wetland
Island - Definite
Road (Gravel Undivided)
Road (Gravel Undivided) - 2 lanes
Road (Paved Divided)
Trail
Rail Line



Fish Species/Sampling Codes			
CODE	COMMON NAME	CODE	COMMON NAME
NCD	Non-Classified Drainage	BT	Bull Trout
NVC	No Visible Channel	CAS	Prickly Sculpin
NFC	No Fish Captured	COG	Slimy Sculpin
NFP	No Fish Present	CO	Coho
NS	Not Sampled	CT	Cutthroat Trout
		DV	Dolly Varden char
		RB	Rainbow Trout
		SP	Unidentified Species

References	
REF 48	SKR Consultants Ltd. 1997. Operational Inventory in the Tanglechain IRM Unit 1996: CP 416-12, 416-13, 416-24, 416-25, 416-28, 417-71, 435-1, 435-2, 453-1. Unpublished report prepared for Houston Forest Products, Houston, B.C.
FISS	Fisheries Inventory Stream System. Maps and Database of Department of Fisheries and Oceans Canada and B.C. Environment.

Source Information
BASE: TR
LOCATION INFORMATION: INV
HABITAT INFORMATION: INV
FISH INFORMATION: INV
STREAM SYMBOL: INV
LAKE SYMBOL: FDE
DATE OF INVENTORY: 2001
INVENTORY MANAGEMENT: SKR Consultants Ltd.

Disclaimer
This product has been accepted as being in accordance with approved standards within the limits of Ministry quality assurance procedures. Users are cautioned that interpreted information on this product developed for the purposes of the Forest Practices Code Act and Regulation, for example stream classifications, is subject to review by a statutory decision maker for the purposes of determining whether or not to approve an operational plan.