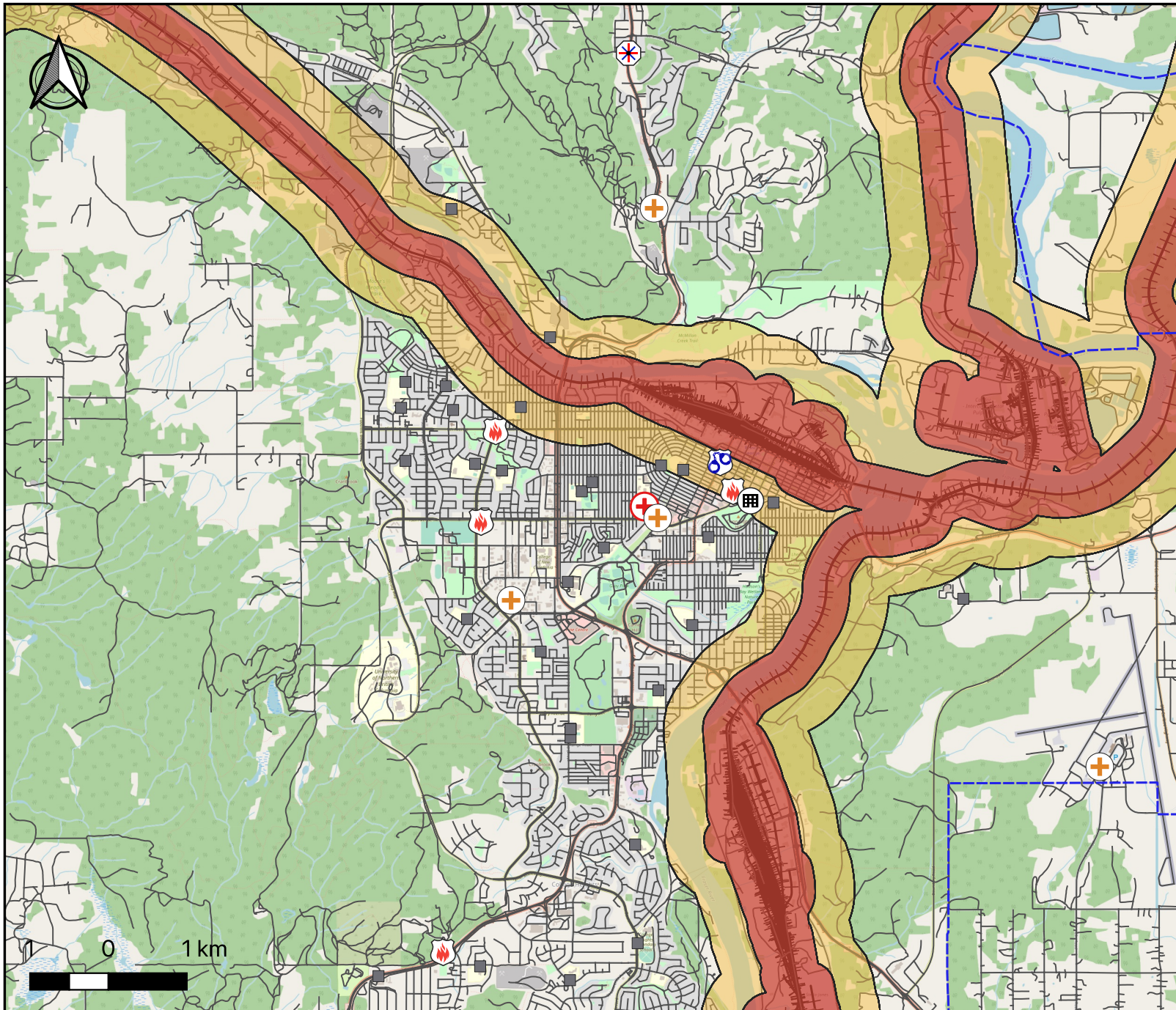


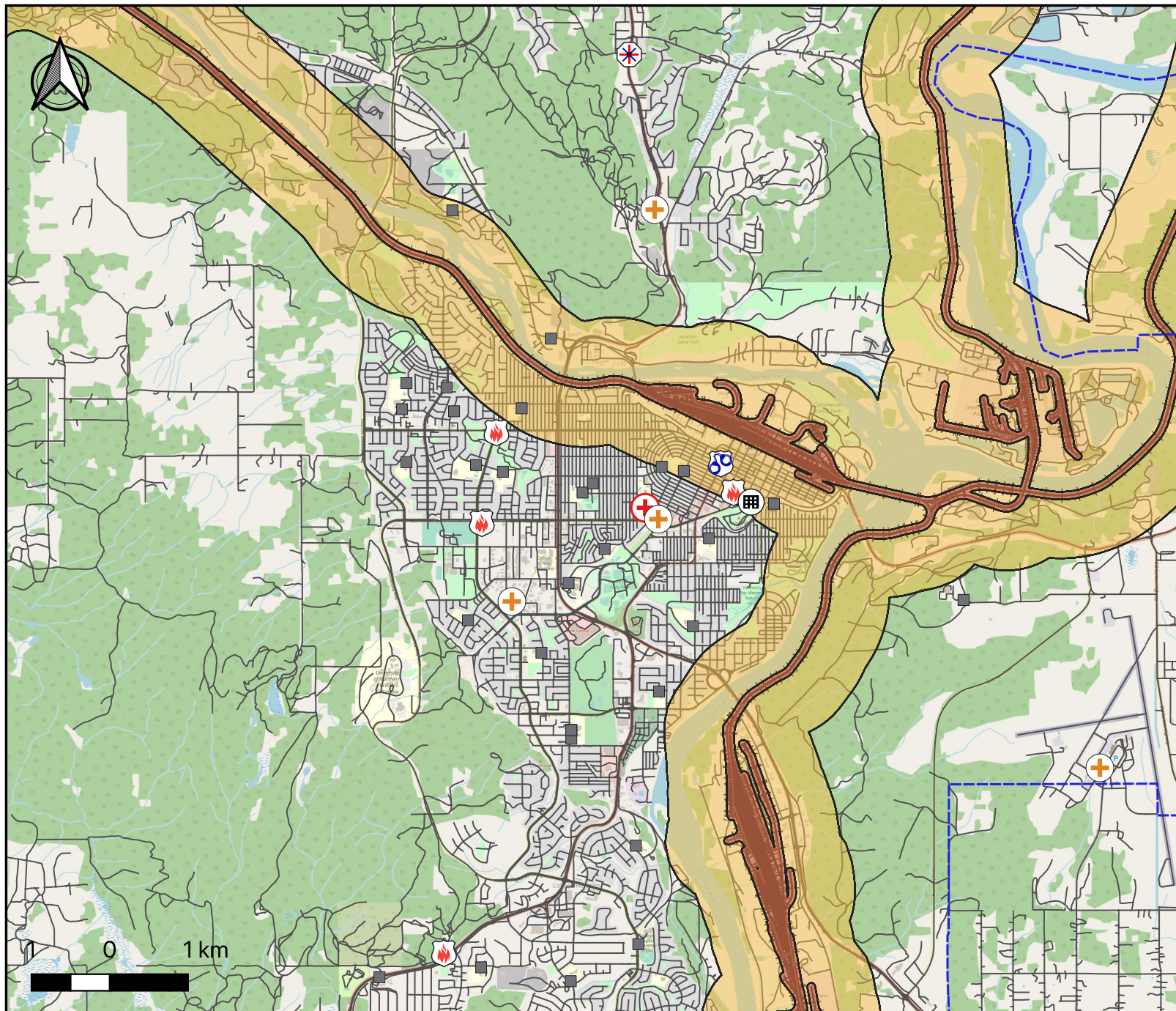
Diesel Rail Evacuation Zones - Prince George













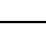


- Ambulance Station
- Fire Station
- Police Station
- Hospital
- Search and Rescue Station
- City Hall
- School
- CN Rail Line
- Roads**
 - Highway
 - Local Road
 - Municipal Boundary
 - Spill Evacuation Zone (300 m)
 - Fire Evacuation Zone (800 m)

Distances for evacuation zones are referenced from the North American 2016 Emergency Response Guidebook, available at <https://tc.gc.ca/eng/canutec/guide-menu-227.htm>

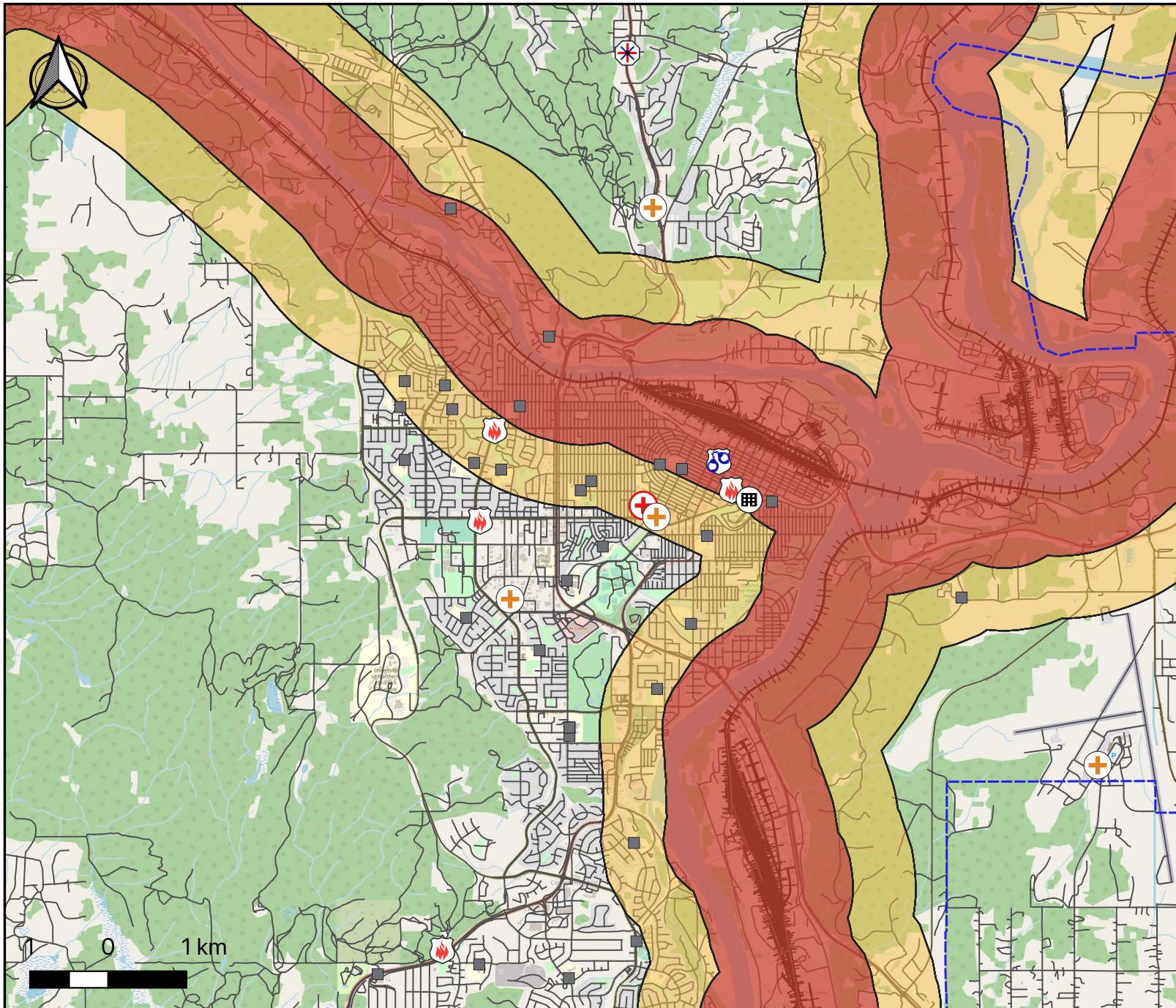
Methanol Rail Evacuation Zones - Prince George








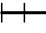







-  Ambulance Station
-  Fire Station
-  Police Station
-  Hospital
-  Search and Rescue Station
-  City Hall
-  School
-  CN Rail Line
- Roads**
-  Highway
-  Local Road
-  Municipal Boundary
-  Spill Evacuation Zone (50 m)
-  Fire Evacuation Zone (800 m)

Distances for evacuation zones are referenced from the North American 2016 Emergency Response Guidebook, available at <https://tc.gc.ca/eng/canutec/guide-menu-227.htm>

Propane Rail Evacuation Zones - Prince George



-  Ambulance Station
-  Fire Station
-  Police Station
-  Hospital
-  Search and Rescue Station
-  City Hall
-  School
-  CN Rail Line
- Roads**
-  Highway
-  Local Road
-  Municipal Boundary
-  Spill Evacuation Zone (800 m)
-  Fire Evacuation Zone (1600 m)

Distances for evacuation zones are referenced from the North American 2016 Emergency Response Guidebook, available at <https://tc.gc.ca/eng/canutec/guide-menu-227.htm>