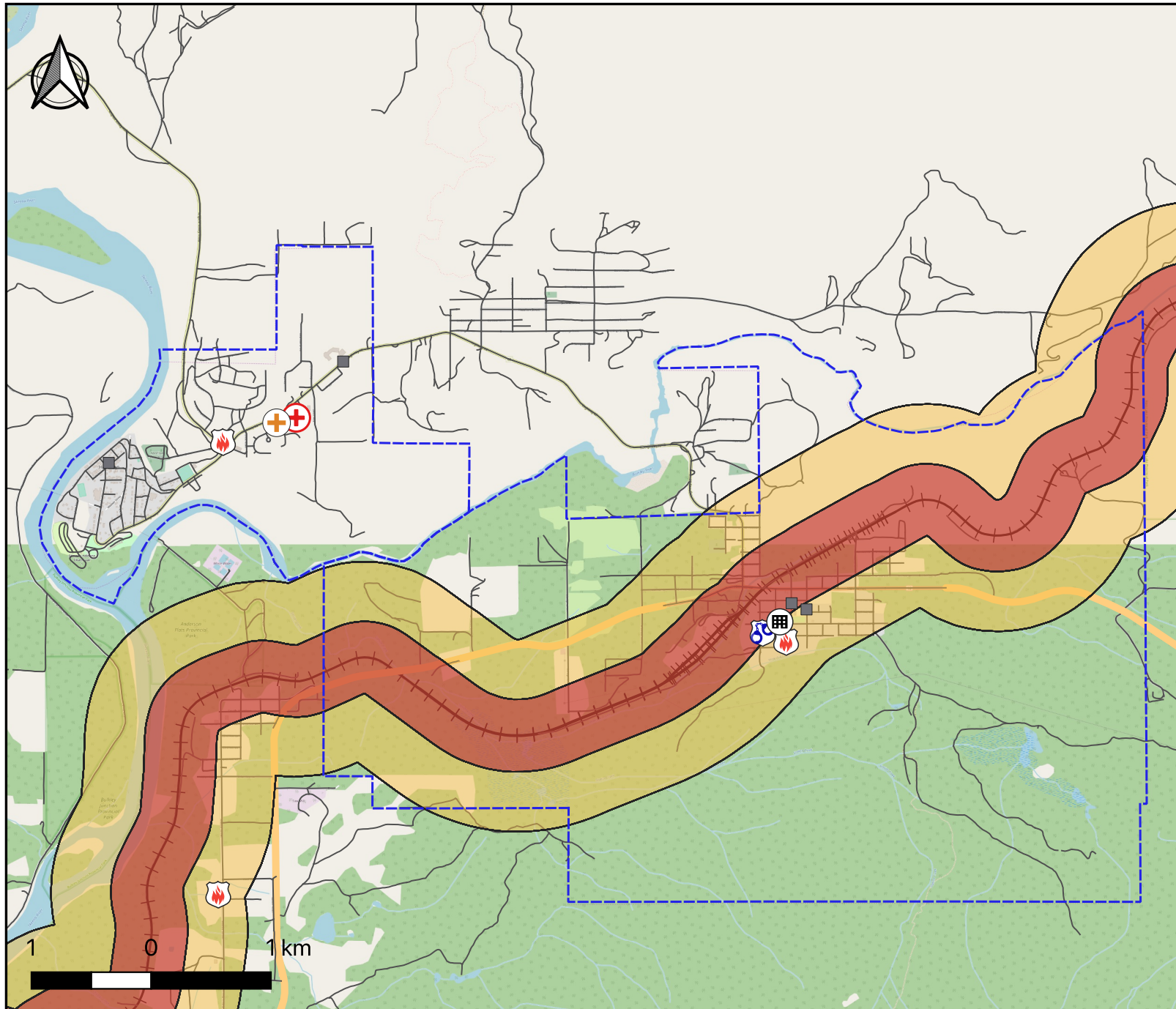


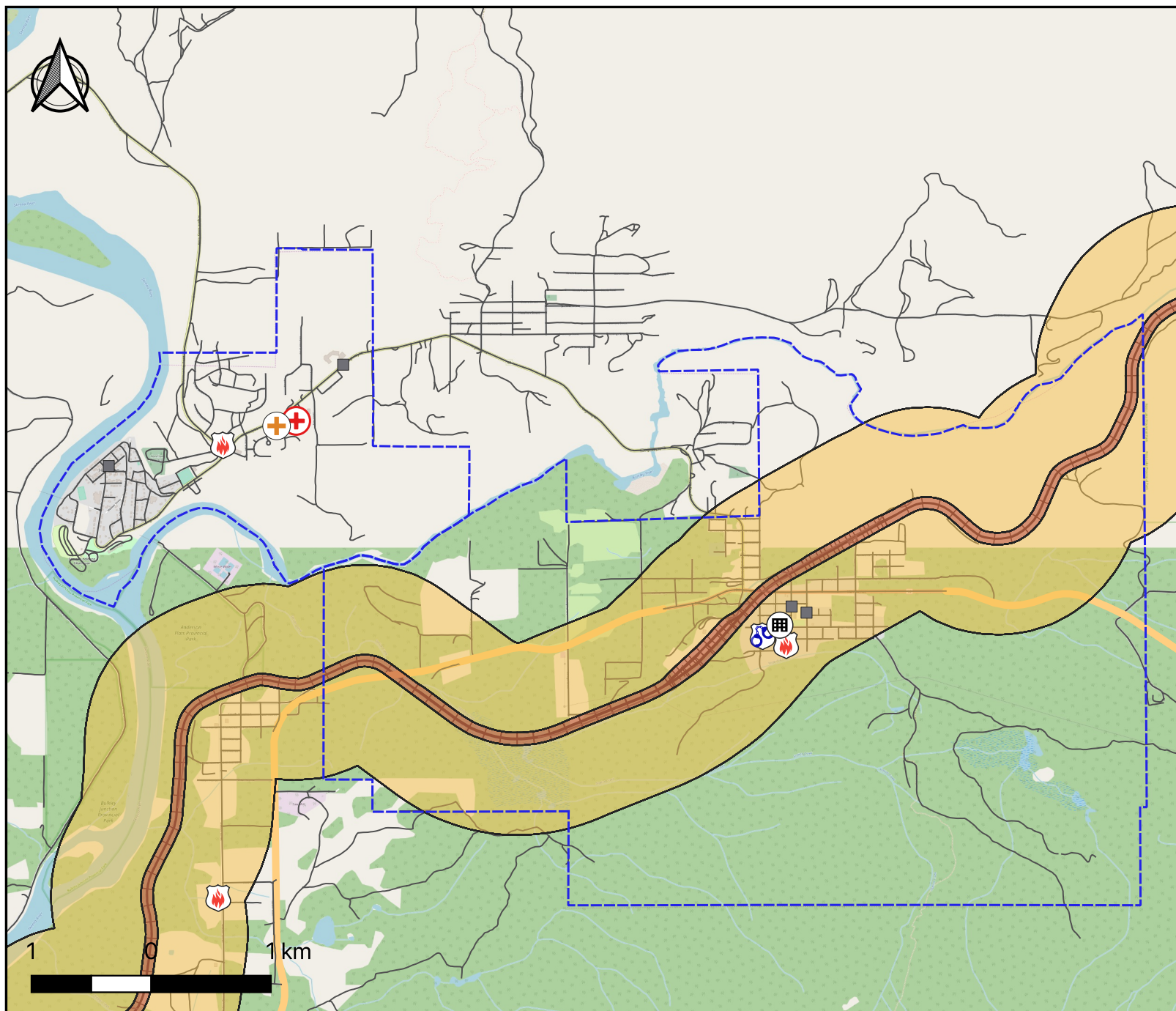
Diesel Rail Evacuation Zones - Hazelton







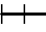



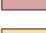



- Ambulance Station
- Fire Station
- Police Station
- Hospital
- Municipal Office
- School
- CN Rail Line
- Roads**
 - Highway
 - Local Road
- Municipal Boundary
- Spill Evacuation Zone (300 m)
- Fire Evacuation Zone (800 m)

Distances for evacuation zones are referenced from the North American 2016 Emergency Response Guidebook, available at <https://tc.gc.ca/eng/canutec/guide-menu-227.htm>

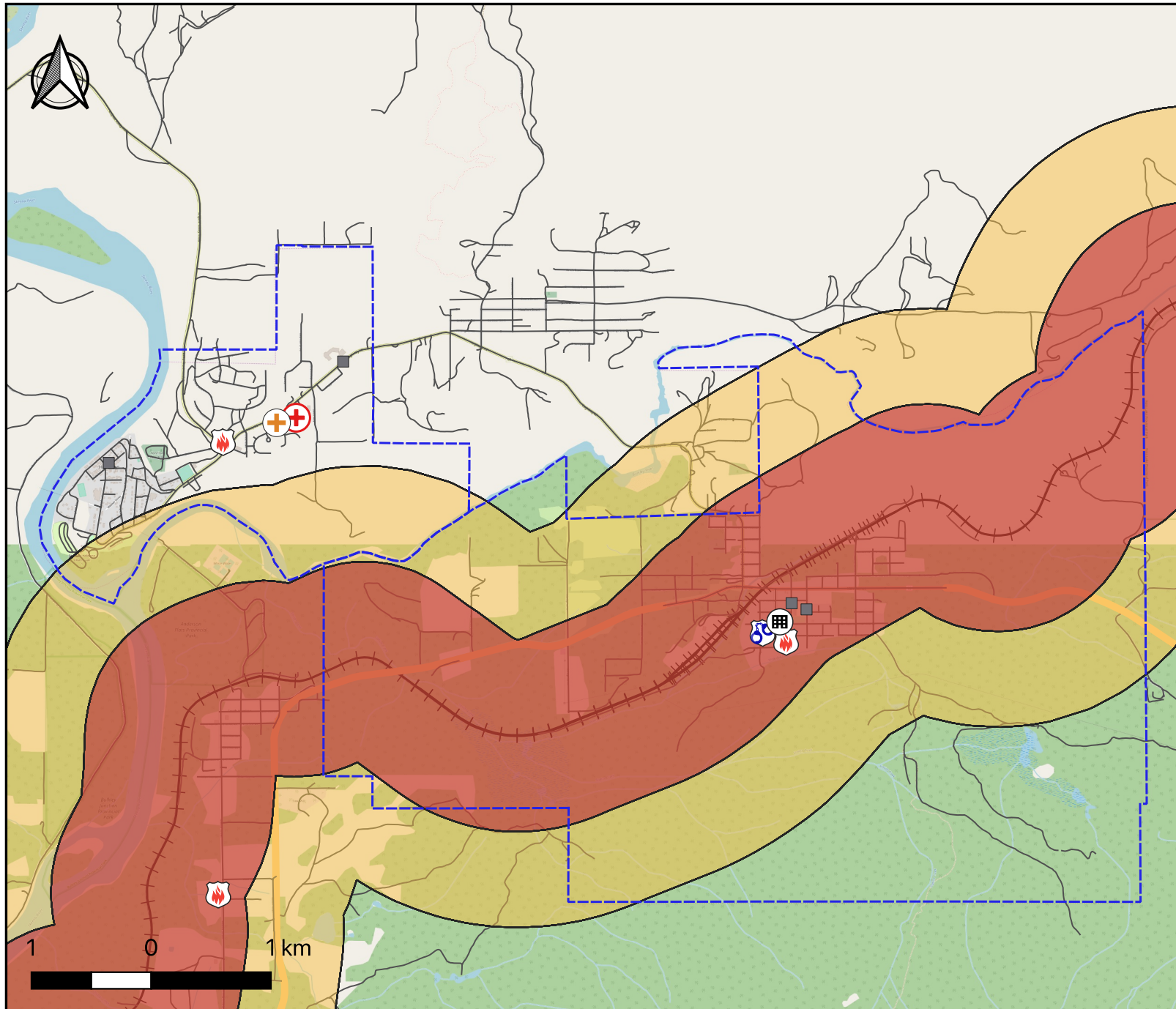
Methanol Rail Evacuation Zones - Hazelton















-  Ambulance Station
-  Fire Station
-  Police Station
-  Hospital
-  Municipal Office
-  School
-  CN Rail Line
- Roads**
-  Highway
-  Local Road
-  Municipal Boundary
-  Spill Evacuation Zone (50 m)
-  Fire Evacuation Zone (800 m)

Distances for evacuation zones are referenced from the North American 2016 Emergency Response Guidebook, available at <https://tc.gc.ca/eng/canutec/guide-menu-227.htm>

Propane Rail Evacuation Zones - Hazelton



-  Ambulance Station
-  Fire Station
-  Police Station
-  Hospital
-  Municipal Office
-  School
-  CN Rail Line
- Roads**
 -  Highway
 -  Local Road
 -  Municipal Boundary
 -  Spill Evacuation Zone (800 m)
 -  Fire Evacuation Zone (1600 m)

Distances for evacuation zones are referenced from the North American 2016 Emergency Response Guidebook, available at <https://tc.gc.ca/eng/canutec/guide-menu-227.htm>