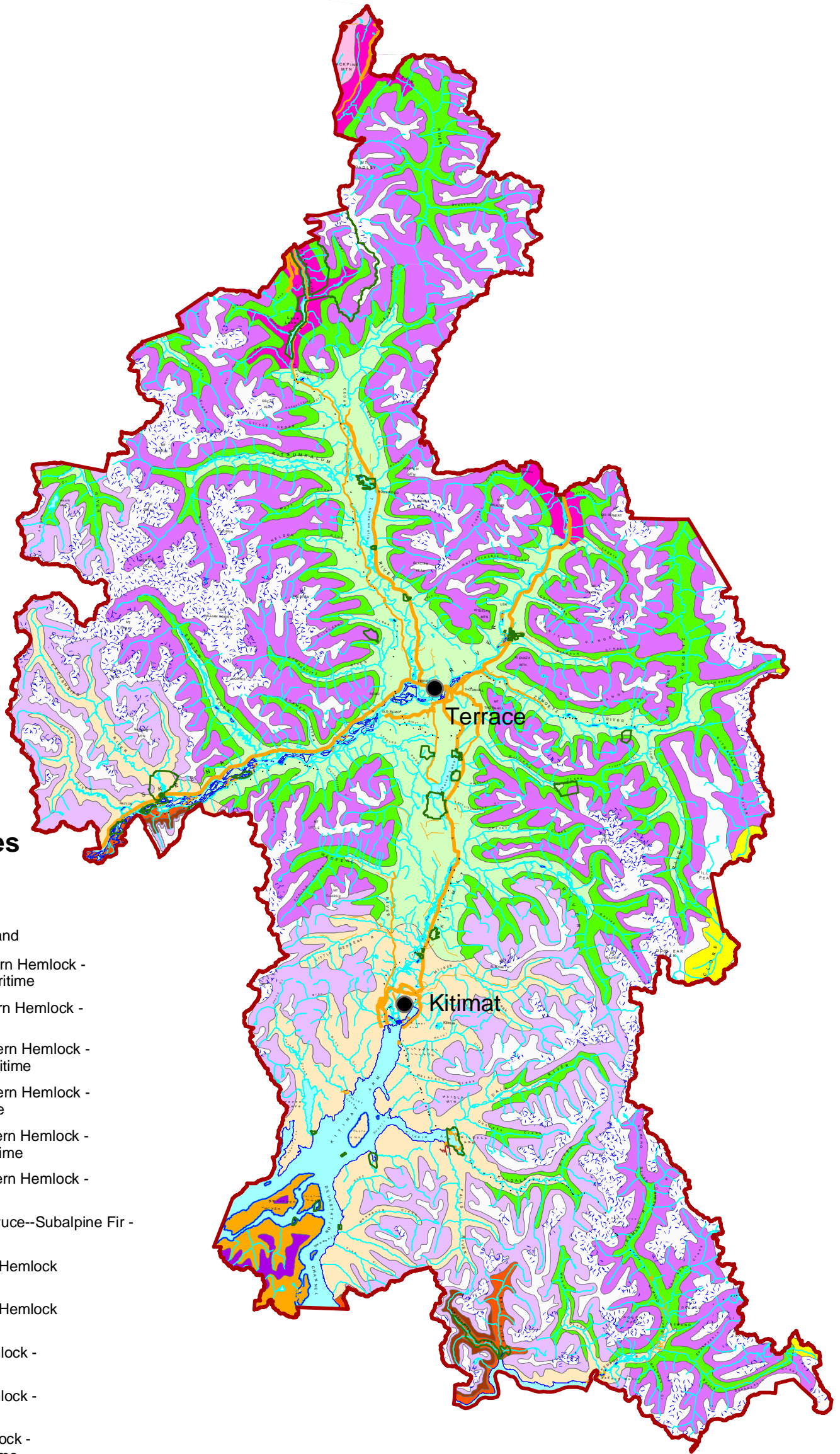


Kalum Sustainable Resource Management Plan  
Map 2 - Biogeoclimatic Zones



**Legend**

**Biogeoclimatic Zones**

- AT un** -- Alpine Tundra - Undifferentiated
- AT unP** -- Alpine Tundra - Undifferentiated and Parkland
- CWH vh2** -- Coastal Western Hemlock - Central Very Wet Hypermaritime
- CWH vm** -- Coastal Western Hemlock - Very Wet Maritime
- CWH vm1** -- Coastal Western Hemlock - Submontane Very Wet Maritime
- CWH vm2** -- Coastal Western Hemlock - Montane Very Wet Maritime
- CWH ws1** -- Coastal Western Hemlock - Submontane Wet Submaritime
- CWH ws2** -- Coastal Western Hemlock - Montane Wet Submaritime
- ESSFmk** -- Engelmann Spruce--Subalpine Fir - Moist Cool
- ICH mc1** -- Interior Cedar--Hemlock Nass Moist Cold
- ICH mc2** -- Interior Cedar--Hemlock Hazelton Moist Cold
- MH mm1** -- Mountain Hemlock - Windward Moist Maritime
- MH mm2** -- Mountain Hemlock - Leeward Moist Maritime
- MH wh1** -- Mountain Hemlock - Windward Wet Hypermaritime

Produced for:  
Integrated Land Management Bureau  
Planning - Regional Client Services Division

Produced by:  
Land Information Management

**Integrated Land Management Bureau**

w:\s\sm\work\area\malkow\Kalum\_SRMP\mxd\document\_maps\Map2\_BEC.mxd  
Map 2 - Biogeoclimatic  
Projection: Albers Equal Area Conic, NAD83  
Date Created: April 10th, 2006  
Created by: Loretta Malkow - Skeena Region  
Scale: 1:800,000

Kilometers  
0 5 10 20

**Legend**

- Kalum SRMP Area
- Park / Protected Area / Ecological Reserve
- Waterbody
- Road (paved or gravel)
- River or Stream or Lake

