

093M029

Reconnaissance (1:20,000) Fish and Fish Habitat Inventory at Three Sub-basins in the Morrison Creek Watershed. Watershed Code 480-598800 Fisheries Project/Interpretive Map 4 of 6

Houston Forest Products Co. Morice Forest District Morrison Operating Area 2000

NAD 83 TRIM 1994 SCALE 1:20000 1 cm = 200 metres

Date Drawn: 2001/12/06 Drawn By: Western Geographic Information Systems Inc.

Stream Information Summary

- Waterbody code Waterbody Identifier Reach break Sample site location Stream anomaly Fishbearing streams Suspect fishbearing streams Non-fishbearing streams Suspect non-fishbearing streams No defined channel

- Physical Characteristics persistent debris accumulation dam falls alluvial fan talus fan slump eroded bank dewatering marsh or swamp groundwater flow direction velocity barrier culvert beaver dam cascades colluvial fan rock outcrop landslide slumping bank canyon spring sub-surface flow

- Enhancement/Management Activities hatchery fishway incubation box bridge weir counting fence side channel spawning channel general crossing fisheries sensitive zone

Feature Summary Symbol

Feature symbol Height Length (Note: Not all features are associated with height and/or length measurements)

Reach Summary Symbol

S-FC-3-IR Stream (S) of Watershed (W) Confinement Features

Stream Summary Symbol

Fish code(s) CO DV RB 2-12-RP-CASCAS Site Gradient Width Morphology Substrate Distance

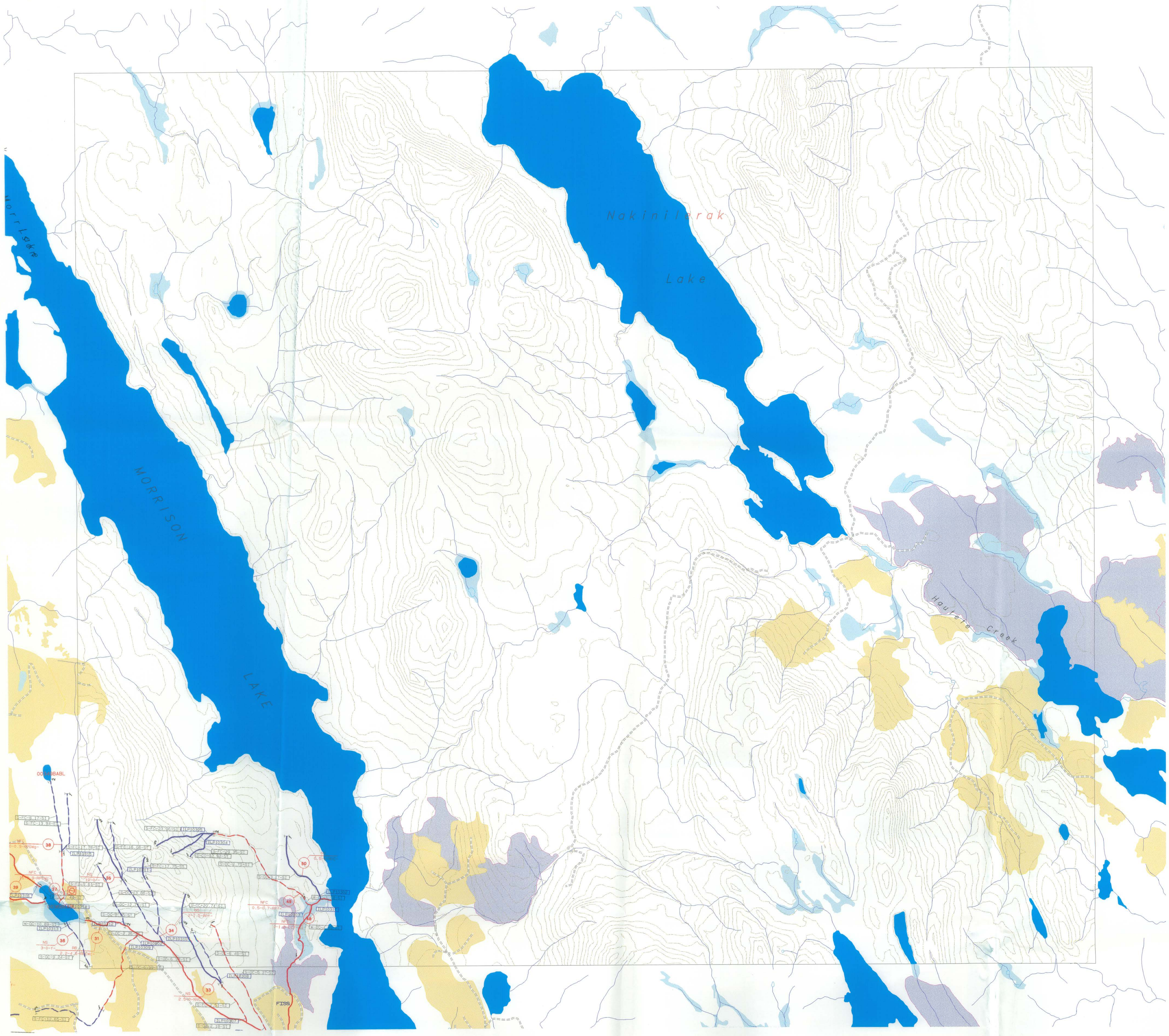
Note: Shaded sample sites do not have stream summary symbols. Contact MELP for the associated historic data.

Lake Summary Symbol

Lake (L) or Wetland (W) Surface Area Maximum Depth pH Conductivity TDS Littoral Area L-175-12-6-8-29 20-15 CAS CO DV PCC RB SK TSB

Other Features

- Lake Wetland Existing blocks Proposed blocks River or stream Contour Existing roads Proposed roads



Historic Information Summary

- SKR Consultants Ltd. 1998a. Fish and fish habitat inventory for operational areas in the Morrison Landscape Unit: CP 529-1, 2, 3, & 4, 3000 Road extension and West Arm of 3000 Road. Unpublished report prepared for Houston Forest Products Co. SKR Consultants Ltd. 1998b. Fish and fish habitat inventory for operational areas in the Morrison Landscape Unit: CP 577-1 and the CP 586 access road. Unpublished report prepared for Houston Forest Products Co. SKR Consultants Ltd. 1999a. Operational fish and fish habitat inventory of inlet streams to Babine Lake: CP 527-3, CP 527-4, CP 528-3, CP 529-2, CP 541-1, CP 541-2. Unpublished report prepared for Houston Forest Products Co. SKR Consultants Ltd. 1999b. Operational fish and fish habitat inventory of inlet streams to Babine Lake: CP 505-1 and 546-1. Unpublished report prepared for Houston Forest Products Co.

Table with 4 columns: Code, Common Name, Code, Common Name. Lists fish species like Prickly Sculpin, Chub, Chinook Salmon, etc.

BASE: TR STR SYM: INV LOC: INV LK SYM: EDE HAB: INV FISH: INV DATE INV: 2000 INV MGMT: SKR Consultants Ltd.

The Province has not accepted the contents of this product for the purposes of the Forest Practice Code, and reserves the right to dispute the validity of the summarized results. The Province does not necessarily agree with the classification assigned to any individual stream reach, for use in logging plans, silvicultural prescriptions or for any other application.