

OWEN CREEK STREAM INVENTORY PHOTODOCUMENTATION - June - July 1998



Photo 1. Owen C., R6, Aerial View



Photo 2. Owen C., R7, Aerial View of Owen Lake

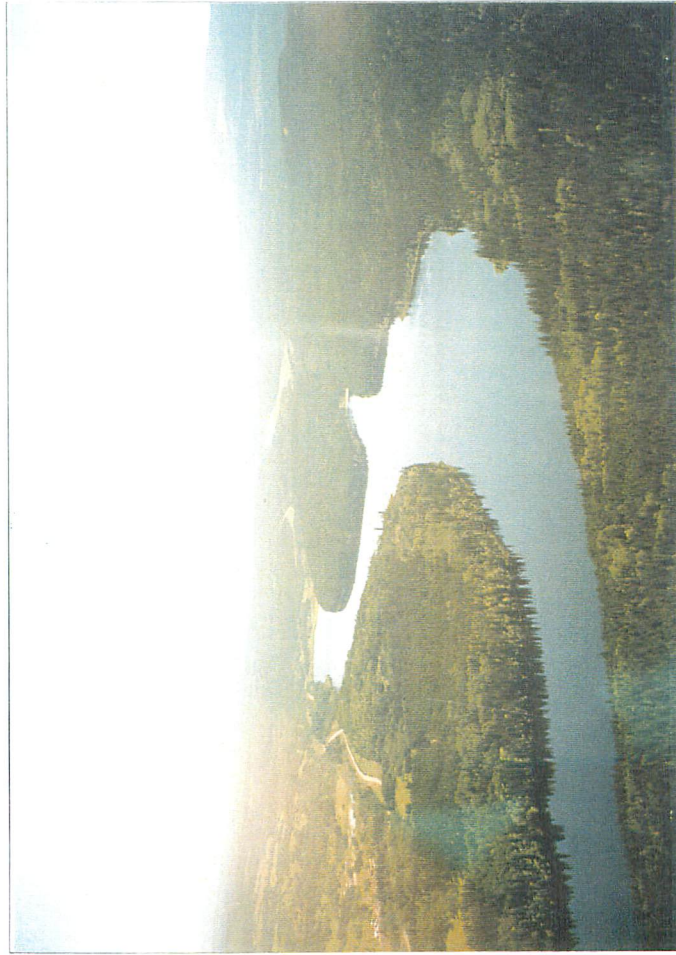


Photo 3. Owen C., R7, Aerial View of Owen Lake



Photo 4. Owen C. Tributary OW1, R1, Site 1 - Downstream

OWEN CREEK STREAM INVENTORY PHOTODOCUMENTATION - June - July 1998



Photo 5. Owen C. Tributary OW1, R1, Site 1 - Upstream



Photo 6. Owen C. Tributary OW2, R1, Site 2 - Upstream



Photo 7. Owen C. Tributary OW2, R1, Site 2 - Downstream



Photo 8. Owen C. Tributary OW2, R1, Site 2 - RB Sample

OWEN CREEK STREAM INVENTORY PHOTODOCUMENTATION - June - July 1998



Photo 9. Owen C. Tributary OW2, R1, Site 2 - Upstream at Culvert



Photo 10. Owen C. Tributary OW2, R2, Site 3 - Upstream



Photo 11. Owen C. Tributary OW2, R2, Site 3 - Downstream



Photo 12. Owen C. Tributary OW2, R2, - Upstream at 8 m Falls

OWEN CREEK STREAM INVENTORY PHOTODOCUMENTATION - June - July 1998



Photo 13. Owen C. Tributary OW2, R7, Site 4 - Upstream



Photo 14. Owen C. Tributary OW2, R7, Site 4 - Downstream



Photo 15. Owen C. Tributary OW2, R9, Site 5 - Upstream



Photo 16. Owen C. Tributary OW2, R9, Site 5 - Downstream

OWEN CREEK STREAM INVENTORY PHOTODOCUMENTATION - June - July 1998



Photo 17. Owen C. Tributary OW2.2, R2, Site 6 - Upstream



Photo 18. Owen C. Tributary OW2.2, R2, Site 6 - Downstream



Photo 19. Owen C. Tributary OW2.2, R3, Site 6 - Avin Lake



Photo 20. Owen C. Tributary OW2.2, R3, Site 6 - Avin Lake

OWEN CREEK STREAM INVENTORY PHOTODOCUMENTATION - June - July 1998



Photo 21. Owen C. Tributary OW2.2, R4, Site 7 - Upstream



Photo 22. Owen C. Tributary OW2.2, R4, Site 7 - Downstream



Photo 23. Owen C. Tributary OW3, R1, Site 8 - Upstream



Photo 24. Owen C. Tributary OW3, R1, Site 8 - Downstream

OWEN CREEK STREAM INVENTORY PHOTODOCUMENTATION - June - July 1998



Photo 25. Owen C. Tributary OW3, R1, Site 8 - Road Culverts



Photo 26. Owen C. Tributary OW3, R1, Site 8 - RB/DV Sample



Photo 27. Owen C. Tributary OW4, R2, Site 9 - Upstream



Photo 28. Owen C. Tributary OW4, R2, Site 9 - Downstream

OWEN CREEK STREAM INVENTORY PHOTODOCUMENTATION - June - July 1998



Photo 29. Owen C. Tributary OW4, R3, Site 10 - Upstream



Photo 30. Owen C. Tributary OW4, R3, Site 10 - Downstream



Photo 31. Owen C. Tributary OW5, R1, Site 11 - Upstream



Photo 32. Owen C. Tributary OW5, R1, Site 11 - Downstream



OWEN CREEK STREAM INVENTORY PHOTODOCUMENTATION - June - July 1998



Photo 33. Owen C. Tributary OW6, R1, Site 12 - Upstream



Photo 34. Owen C. Tributary OW6, R1, Site 12 - Downstream



Photo 35. Owen C. Tributary OW6, R1, Site 12 - Road Culvert



Photo 36. Owen C. Tributary OW6, R2, Site 13 - Upstream

OWEN CREEK STREAM INVENTORY PHOTODOCUMENTATION - June - July 1998



Photo 37. Owen C. Tributary OW6, R2, Site 13 - Downstream



Photo 38. Owen C. Tributary OW7, R1, Site 14 - Upstream



Photo 39. Owen C. Tributary OW7, R1, Site 14 - Downstream



Photo 40. Owen C. Tributary OW7, R2, Site 15 - Upstream

OWEN CREEK STREAM INVENTORY PHOTODOCUMENTATION - June - July 1998



Photo 41. Owen C. Tributary OW7, R2, Site 15 - Downstream



Photo 42. Owen C. Tributary OW8, R1, Site 16 - Upstream



Photo 43. Owen C. Tributary OW8, R1, Site 16 - Downstream



Photo 44. Owen C. Tributary OW8, R2, Site 17 - Upstream

OWEN CREEK STREAM INVENTORY PHOTODOCUMENTATION - June - July 1998



Photo 45. Owen C. Tributary OW8, R2, Site 17 - Downstream



Photo 46. Owen C. Tributary OW9, R1, Site 18 - Upstream



Photo 47. Owen C. Tributary OW9, R1, Site 18 - Downstream



Photo 48. Owen C. Tributary OW9, R2, Site 19 - Upstream

OWEN CREEK STREAM INVENTORY PHOTODOCUMENTATION - June - July 1998



Photo 49. Owen C. Tributary OW9, R2, Site 19 - Downstream



Photo 50. Owen C. Tributary OW9, R4, Site 20 - Upstream



Photo 51. Owen C. Tributary OW9, R4, Site 20 - Downstream

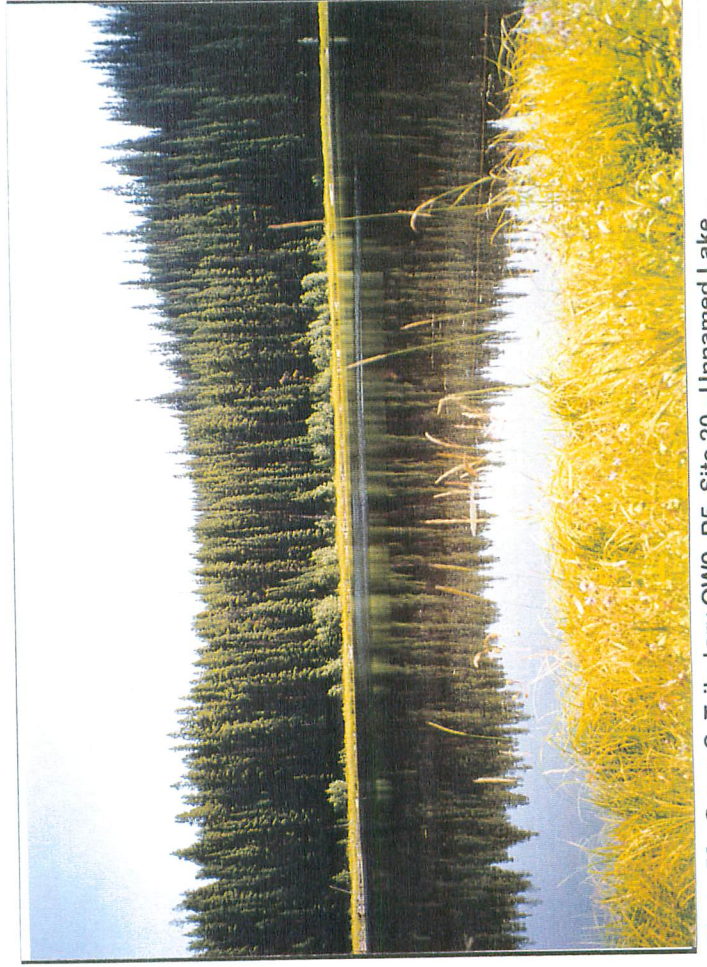


Photo 52. Owen C. Tributary OW9, R5, Site 20 - Unnamed Lake

OWEN CREEK STREAM INVENTORY PHOTODOCUMENTATION - June - July 1998



Photo 53. Owen C. Tributary OW9, R5, Site 20 - Transforming Tadpole



Photo 54. Puport C. Tributary PU1, R1, Site 21 - Upstream



Photo 55. Puport C. Tributary PU1, R1, Site 21 - Downstream



Photo 56. Puport C. Tributary PU1, R2, Site 22 - Downstream

OWEN CREEK STREAM INVENTORY PHOTODOCUMENTATION - June - July 1998



Photo 57. Puport C. Tributary PU1, R2, Site 22 - Road Culvert



Photo 58. Puport C. Tributary PU1, R2, Site 22 - RB Sample

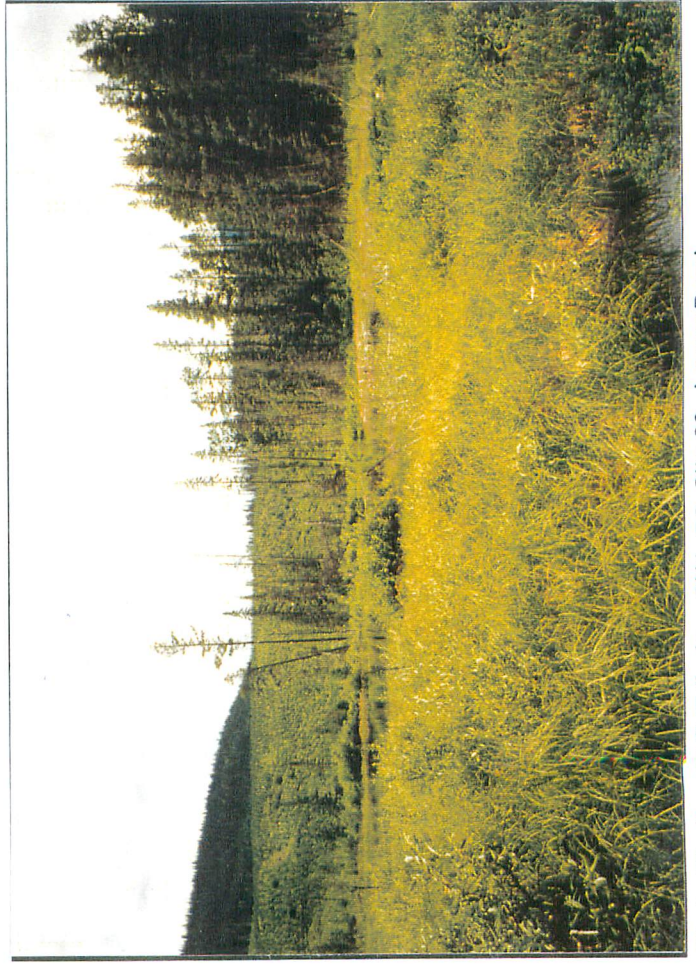


Photo 59. Puport C. Tributary PU1, R3, Site 23 - Lower Pond



Photo 60. Puport C. Tributary PU1, R3, Site 23 - Upper Pond

OWEN CREEK STREAM INVENTORY PHOTODOCUMENTATION - June - July 1998



Photo 61. Puport C. Tributary PU1, R4, Site 24 - Upstream



Photo 62. Puport C. Tributary PU1, R4, Site 24 - Downstream



Photo 63. Puport C. Tributary PU1, R1, Site 25 - Upstream



Photo 64. Puport C. Tributary PU1, R1, Site 25 - Road Culvert



OWEN CREEK STREAM INVENTORY PHOTODOCUMENTATION - June - July 1998



Photo 65. Puport C., R2, Site 26 - Upstream



Photo 66. Puport C., R2, Site 26 - Downstream



Photo 67. Puport C., R4, Site 27 - Upstream

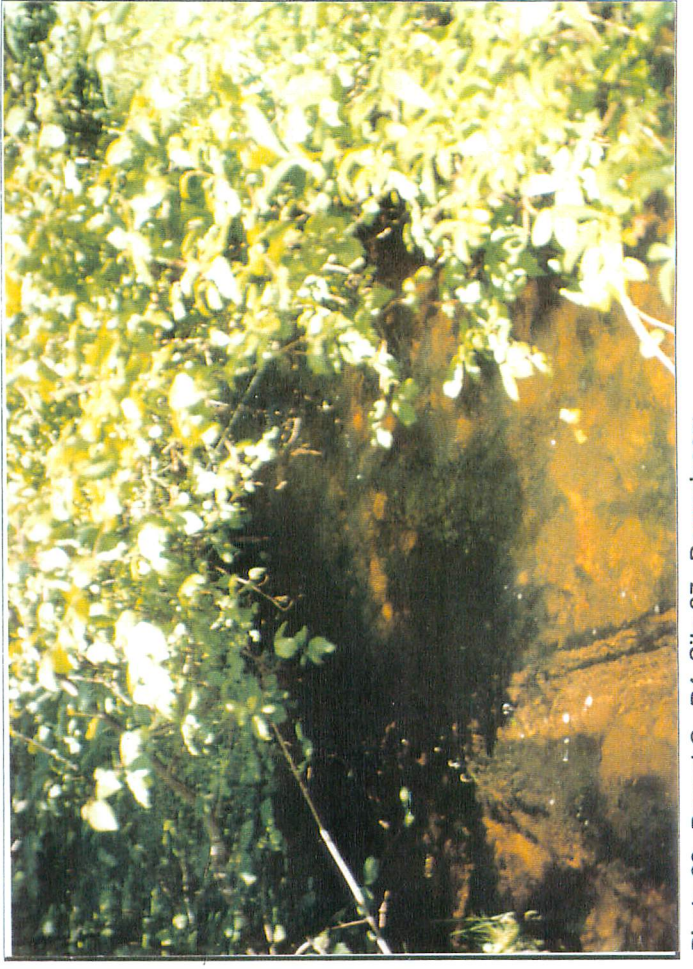


Photo 68. Puport C., R4, Site 27 - Downstream

OWEN CREEK STREAM INVENTORY PHOTODOCUMENTATION - June - July 1998



Photo 69. Puport C., R5, Site 28 - Upstream



Photo 70. Puport C., R5, Site 28 - Downstream



Photo 71. Puport C. Tributary PU2, R1, Site 29 - Upstream



Photo 72. Puport C. Tributary PU2, R1, Site 29 - Downstream

OWEN CREEK STREAM INVENTORY PHOTODOCUMENTATION - June - July 1998



Photo 73. Puport C. Tributary PU2, R1, Site 30 - Upstream



Photo 74. Puport C. Tributary PU2, R1, Site 30 - Downstream



Photo 75. Puport C. Tributary PU2, R2, Site 31 - Upstream



Photo 76. Puport C. Tributary PU2, R2, Site 31 - Downstream

OWEN CREEK STREAM INVENTORY PHOTODOCUMENTATION - June - July 1998



Photo 77. Puport C. Tributary PU7, R1, Site 32 - Upstream



Photo 78. Puport C. Tributary PU7, R1, Site 32 - Downstream



Photo 79. Puport C. Tributary PU7, R2, Site 33 - Upstream



Photo 80. Puport C. Tributary PU7, R2, Site 33 - Downstream

OWEN CREEK STREAM INVENTORY PHOTODOCUMENTATION - June - July 1998



Photo 81. Puport C. Tributary PU8, R1, Site 34 - Upstream



Photo 82. Puport C. Tributary PU8, R1, Site 34 - Downstream



Photo 83. Owen C. Tributary OW12, R1, Site 35 - Upstream



Photo 84. Owen C. Tributary OW12, R1, Site 35 - Downstream

OWEN CREEK STREAM INVENTORY PHOTODOCUMENTATION - June - July 1998



Photo 85. Owen C. Tributary OW13, R1, Site 36 - Upstream



Photo 86. Owen C. Tributary OW13, R1, Site 36 - Downstream



Photo 87. Owen C. Tributary OW13, R4, Site 37 - Upstream



Photo 88. Owen C. Tributary OW13, R4, Site 37 - Downstream

OWEN CREEK STREAM INVENTORY PHOTODOCUMENTATION - June - July 1998



Photo 89. Owen C. Trib. OW13, R4, Site 37 - Western Spotted Frog



Photo 90. Owen C. Tributary OW14, R1, Site 38 - Upstream



Photo 91. Owen C. Tributary OW14, R1, Site 38 - Downstream



Photo 92. Owen C. Tributary OW14, R1, Site 38 - Road Culvert

OWEN CREEK STREAM INVENTORY PHOTODOCUMENTATION - June - July 1998



Photo 93. Owen C. Trib. OW14, R3, Site 40 - Upstream



Photo 94. Owen C. Tributary OW14, R3, Site 40 - Downstream



Photo 95. Owen C. Tributary OW14, R5, Site 41 - Upstream



Photo 96. Owen C. Tributary OW14, R5, Site 41 - Downstream



OWEN CREEK STREAM INVENTORY PHOTODOCUMENTATION - June - July 1998



Photo 97. Owen C. Tributary OW14, R5, Site 41 - CT/DV Samples



Photo 98. Owen C. Tributary OW14, R6, Site 42 - Upstream



Photo 99. Owen C. Tributary OW14, R6, Site 42 - Downstream



Photo 100. Owen C. Tributary OW14, R6, Site 42 - CT/DV Samples

OWEN CREEK STREAM INVENTORY PHOTODOCUMENTATION - June - July 1998



Photo 101. Owen C. Tributary OW14, R7, Upper Klate L. - CT Adult



Photo 102. Owen C. Tributary OW14, R8, Site 43 - Upstream



Photo 103. Owen C. Tributary OW14, R8, Site 43 - Downstream



Photo 104. Owen C. Tributary OW14, R7 - Upper Klate Lake

OWEN CREEK STREAM INVENTORY PHOTODOCUMENTATION - June - July 1998



Photo 105. Owen C. Tributary OW14.1, R1, Site 44 - Upstream



Photo 106. Owen C. Tributary OW14.1, R1, Site 44 - Downstream

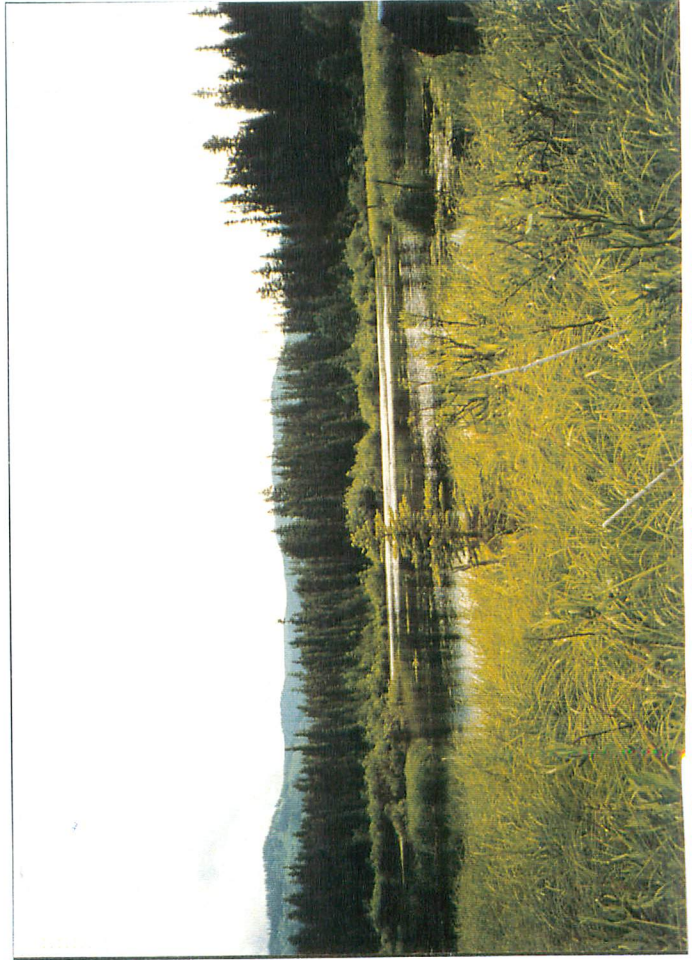


Photo 107. Owen C. Tributary OW14.1, R2, Site 45 - Upstream

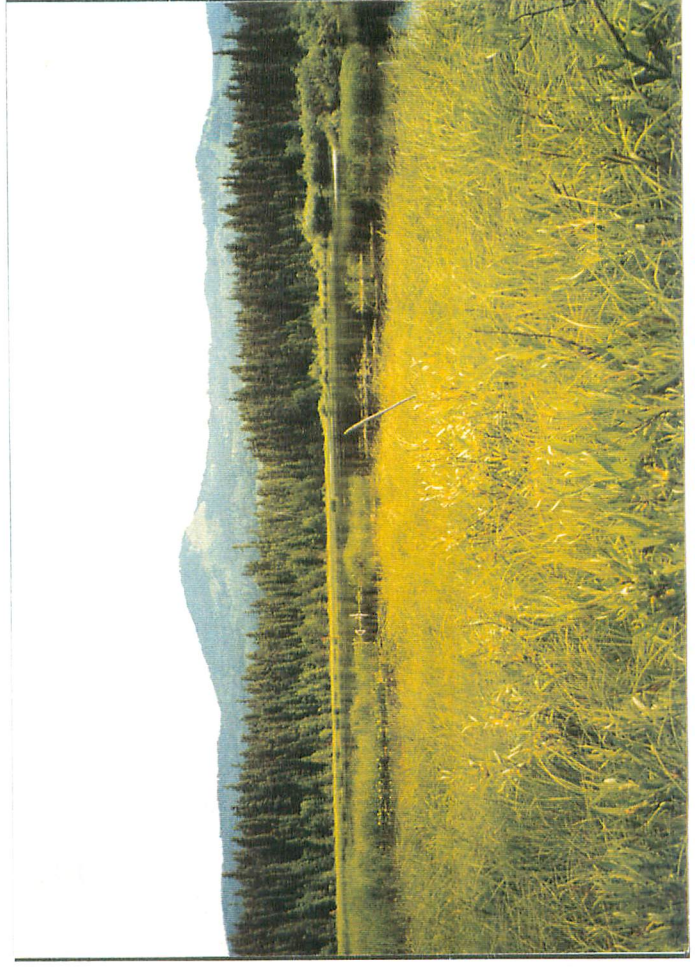


Photo 108. Owen C. Tributary OW14.1, R2, Site 45 - Downstream

OWEN CREEK STREAM INVENTORY PHOTODOCUMENTATION - June - July 1998



Photo 109. Owen C. Tributary OW14.1, R3, Site 46 - Upstream



Photo 110. Owen C. Tributary OW14.1, R3, Site 46 - Downstream

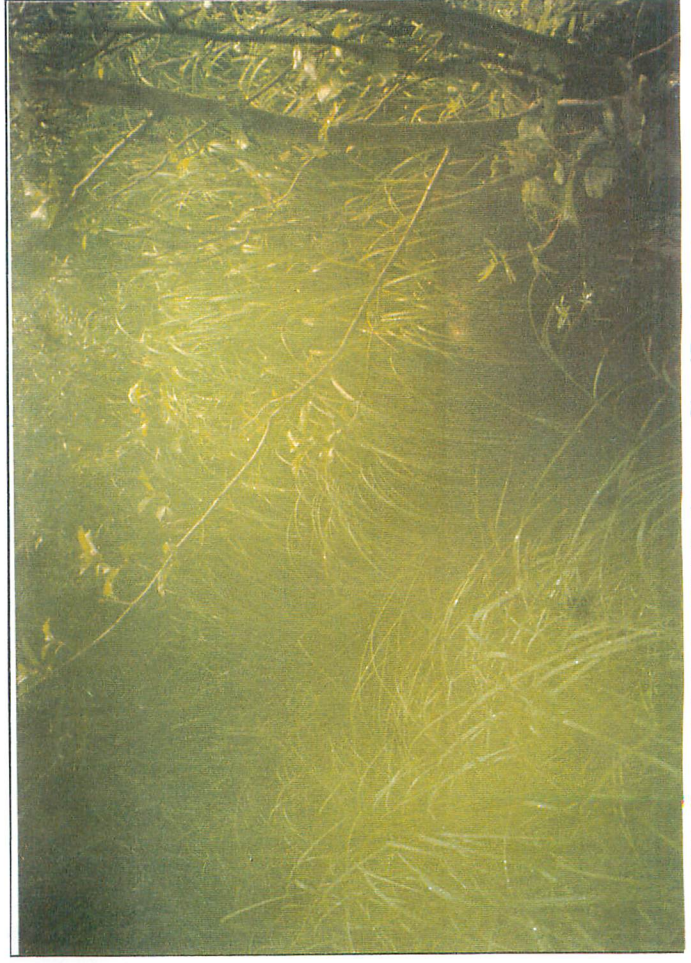


Photo 111. Owen C. Tributary OW14.1.1, R1, Site 47 - Upstream



Photo 112. Owen C. Tributary OW14.1.1, R1, Site 47 - Downstream

OWEN CREEK STREAM INVENTORY PHOTODOCUMENTATION - June - July 1998



Photo 113. Owen C. Tributary OW14.1.1, R2, Site 48 - Upstream



Photo 114. Owen C. Tributary OW14.1.1, R2, Site 48 - Downstream



Photo 115. Owen C. Tributary OW15, R1, Site 49 - Upstream



Photo 116. Owen C. Tributary OW15, R1, Site 49 - Downstream

OWEN CREEK STREAM INVENTORY PHOTODOCUMENTATION - June - July 1998



Photo 117. Emil Creek, R1, Site 50 - Upstream



Photo 118. Emil Creek, R1, Site 50 - Downstream



Photo 119. Emil Creek, R1, Site 50 - 0.9 m High Debris Jam



Photo 120. Emil Creek, R1, Site 50 - Road Culvert

OWEN CREEK STREAM INVENTORY PHOTODOCUMENTATION - June - July 1998



Photo 121. Emil Creek, R3, Site 51 - Upstream



Photo 122. Emil Creek, R3, Site 51 - Downstream

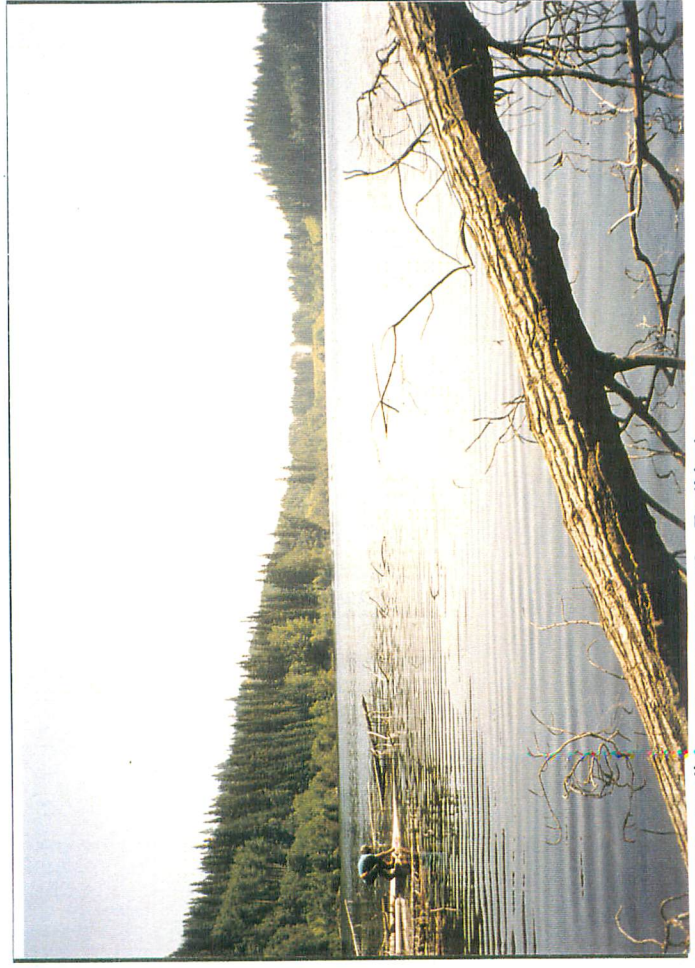


Photo 123. Emil Creek, R4, Site 52 - Emil Lake

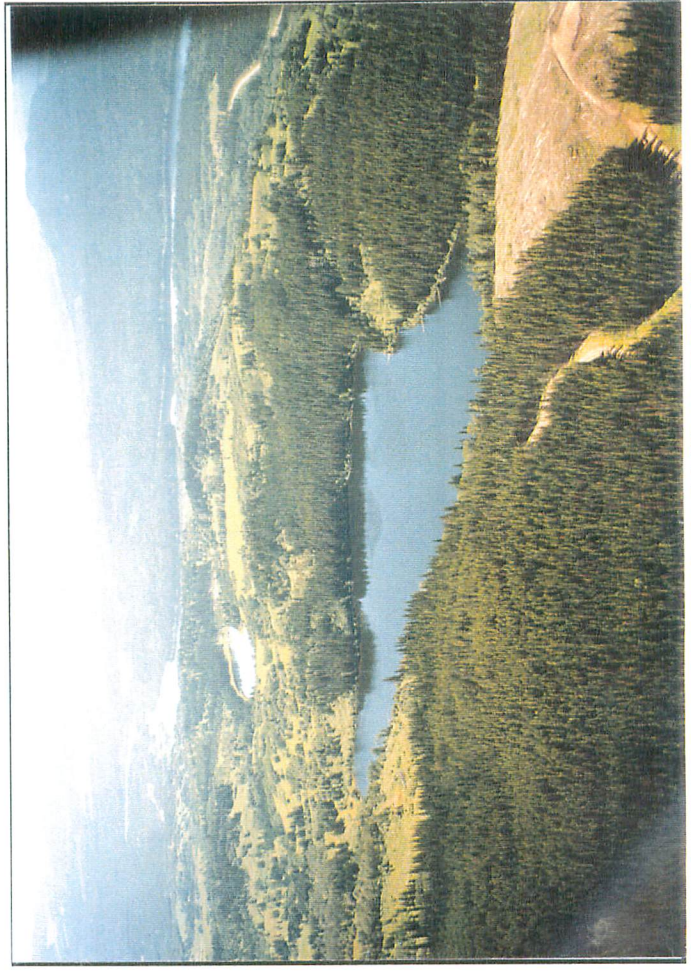


Photo 124. Emil Creek, R4, Site 52 - Aerial View of Emil Lake

OWEN CREEK STREAM INVENTORY PHOTODOCUMENTATION - June - July 1998



Photo 125. Emil C. Tributary OW16.2, R2, Site 53 - Upstream



Photo 126. Emil C. Tributary OW16.2, R2, Site 53 - Downstream



Photo 127. Klate Creek, R1, Site 54 - Upstream



Photo 128. Klate Creek, R1, Site 54 - Downstream



OWEN CREEK STREAM INVENTORY PHOTODOCUMENTATION - June - July 1998



Photo 129. Klate Creek, R3, Site 55 - Upstream



Photo 130. Klate Creek, R3, Site 55 - Downstream

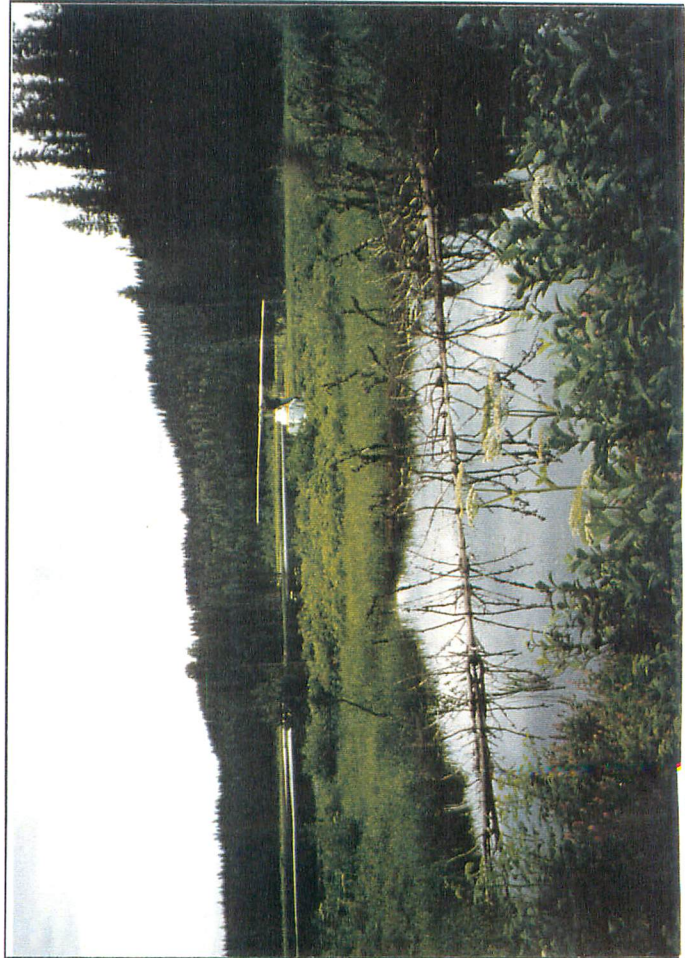


Photo 131. Klate Creek, R3, Site 56 - Upstream



Photo 132. Klate Creek, R3, Site 56 - Downstream

OWEN CREEK STREAM INVENTORY PHOTODOCUMENTATION - June - July 1998

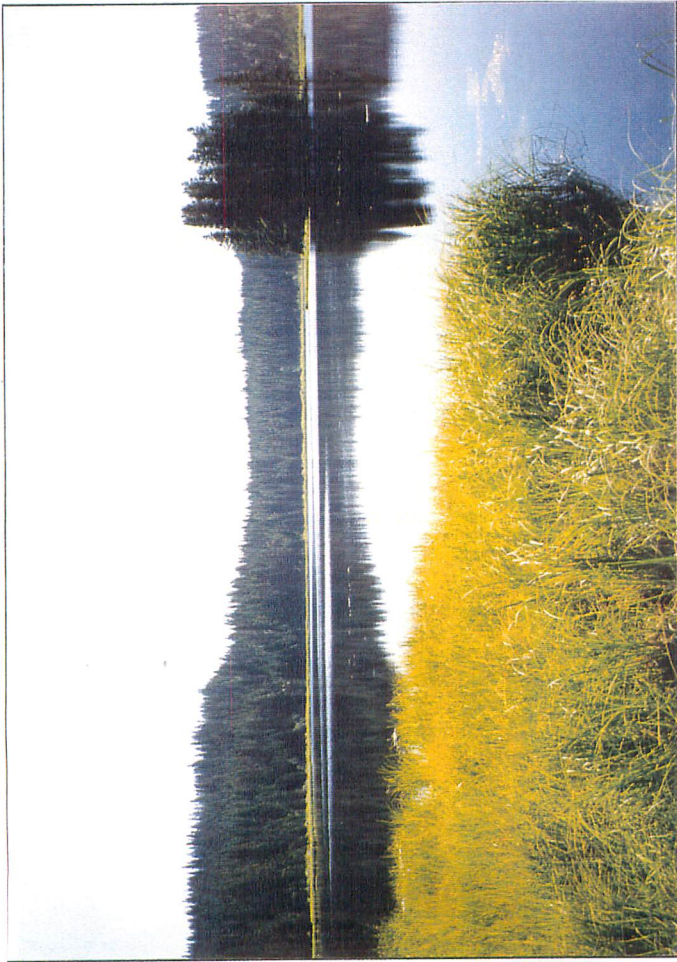


Photo 133. Klate Creek, R4, Site 57 - Klate Lake



Photo 134. Klate Creek, R4, Site 57 - Aerial View of Klate Lake



Photo 135. Owen Lake Trib. OW19, R1, Site 58 - Upstream



Photo 136. Owen Lake Trib. OW19, R1, Site 58 - Downstream

OWEN CREEK STREAM INVENTORY PHOTODOCUMENTATION - June - July 1998



Photo 137. Owen Lake Trib. OW20, R1, Site 59 - Upstream



Photo 138. Owen Lake Trib. OW20, R1, Site 59 - Downstream



Photo 139. Owen Lake Trib. OW21, R1, Site 60 - Upstream



Photo 140. Owen Lake Trib. OW21, R1, Site 60 - Downstream



Photo 141. Owen Lake Trib. OW21, R2, Site 61 - Upstream



Photo 142. Owen Lake Trib. OW21, R2, Site 61 - Downstream



Photo 143. Wrinch Creek, R1, Site 62 - Upstream



Photo 144. Wrinch Creek, R1, Site 62 - Downstream

OWEN CREEK STREAM INVENTORY PHOTODOCUMENTATION - June - July 1998



Photo 145. Wrinch Creek, R2, Site 63 - Upstream



Photo 146. Wrinch Creek, R2, Site 63 - Downstream



Photo 147. Wrinch Creek, R6, Site 64 - Upstream



Photo 148. Wrinch Creek, R6, Site 64 - Downstream

OWEN CREEK STREAM INVENTORY PHOTODOCUMENTATION - June - July 1998



Photo 149. Owen Lake Trib. OW23, R1, Site 65 - Upstream



Photo 150. Owen Lake Trib. OW23, R1, Site 65 - Downstream

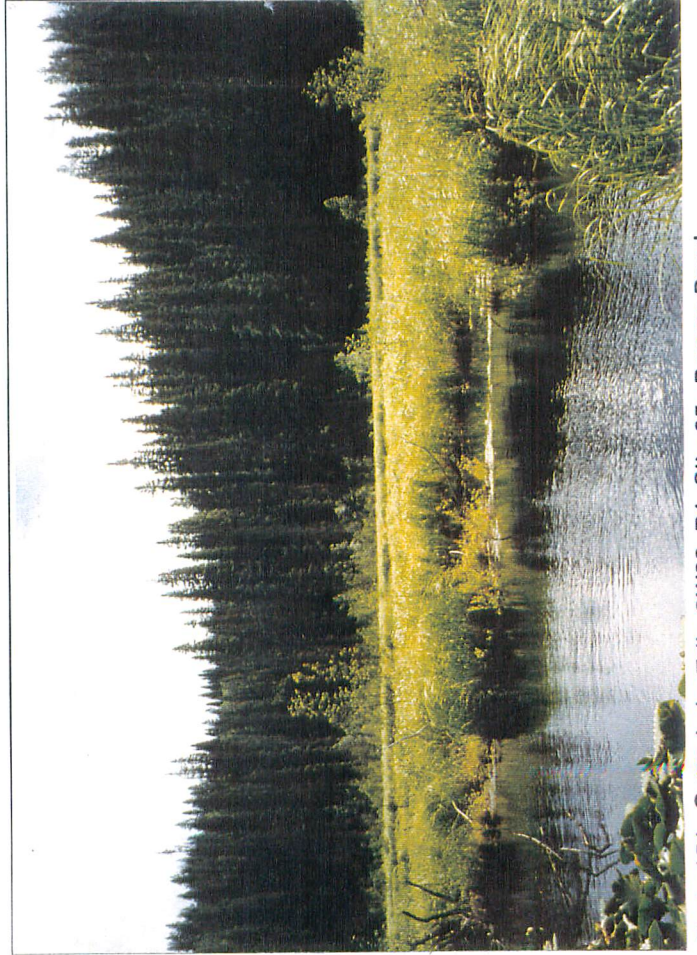


Photo 151. Owen Lake Trib. OW23, R1, Site 65 - Beaver Pond

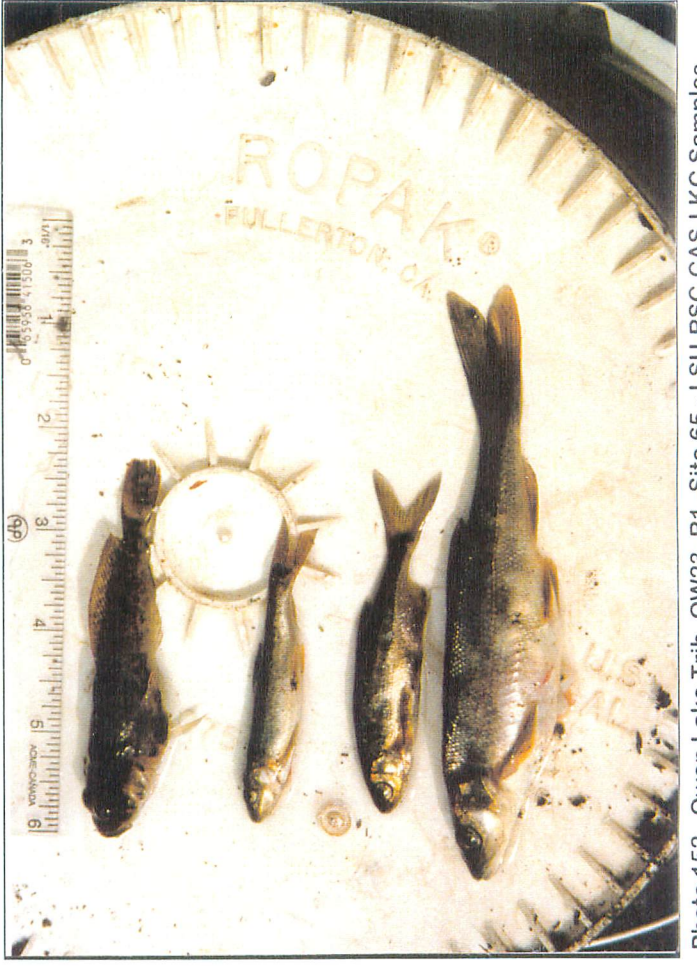


Photo 152. Owen Lake Trib. OW23, R1, Site 65 - LSU, RSC, CAS, LKC Samples

OWEN CREEK STREAM INVENTORY PHOTODOCUMENTATION - June - July 1998



Photo 153. Owen Lake Trib. OW23, R2, Site 66 - Upstream



Photo 154. Owen Lake Trib. OW23, R2, Site 66 - Downstream

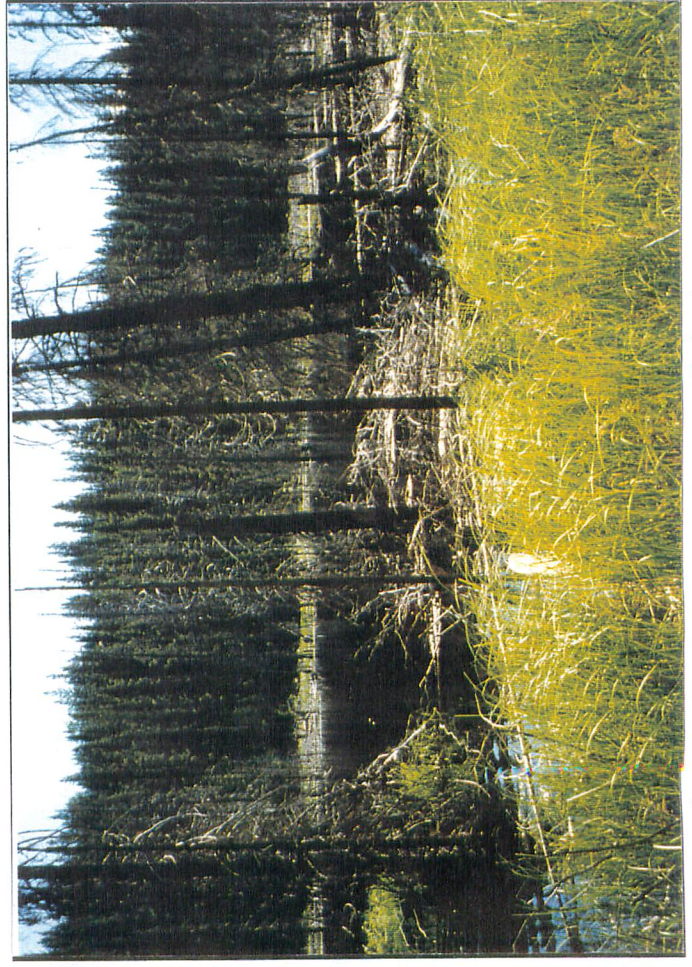


Photo 155. Owen Lake Trib. OW23, R3, Site 67 - Wetland

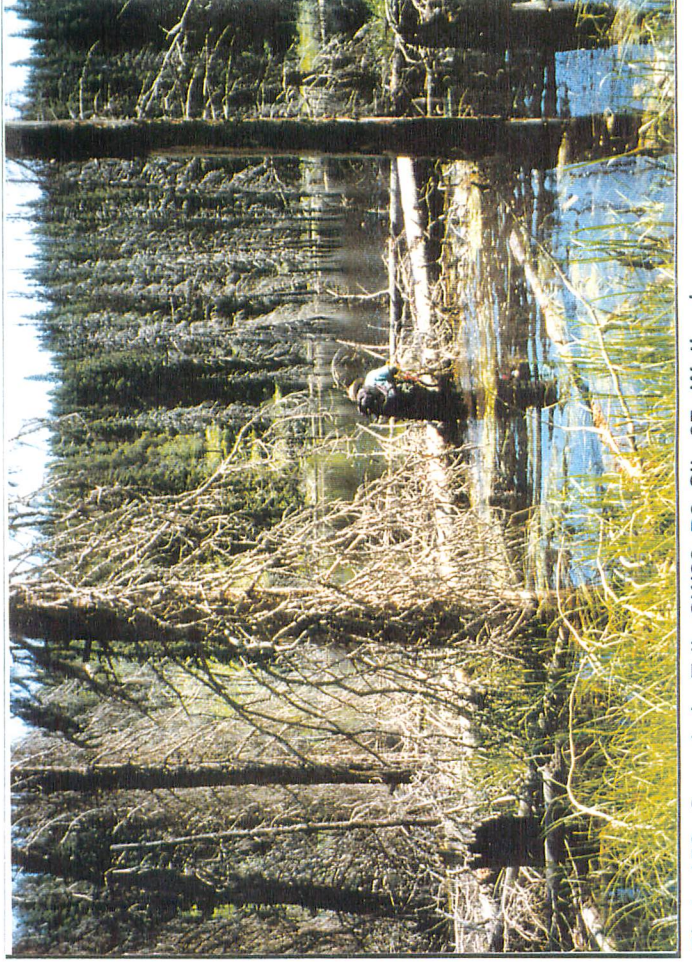


Photo 156. Owen Lake Trib. OW23, R3, Site 67 - Wetland

OWEN CREEK STREAM INVENTORY PHOTODOCUMENTATION - June - July 1998



Photo 157. Owen Lake Trib. OW23, R4, Site 68 - Upstream



Photo 158. Owen Lake Trib. OW23, R4, Site 68 - Downstream



Photo 159. Owen Lake Trib. OW23, R6, Site 69 - Upstream



Photo 160. Owen Lake Trib. OW23, R6, Site 69 - Downstream



OWEN CREEK STREAM INVENTORY PHOTODOCUMENTATION - June - July 1998



Photo 161. Owen Lake Trib. OW23.1, R1, Site 70 - Upstream



Photo 162. Owen Lake Trib. OW23.1, R1, Site 70 - Downstream



Photo 163. Owen Lake Trib. OW24, R1, Site 71 - Upstream



Photo 164. Owen Lake Trib. OW24, R1, Site 71 - Downstream

OWEN CREEK STREAM INVENTORY PHOTODOCUMENTATION - June - July 1998



Photo 165. Owen Lake Trib. OW24, R2, Site 72 - Downstream



Photo 166. Owen Lake Trib. OW24, R2, Site 72 - Upstream



Photo 167. Owen Lake Trib. OW24, R3, Site 73 - Wetland



Photo 168. Owen Lake Trib. OW24, R3, Site 73 - Wetland

OWEN CREEK STREAM INVENTORY PHOTODOCUMENTATION - June - July 1998



Photo 169. Owen Lake Trib. OW25, R1, Site 74 - Upstream



Photo 170. Owen Lake Trib. OW25, R1, Site 74 - Downstream

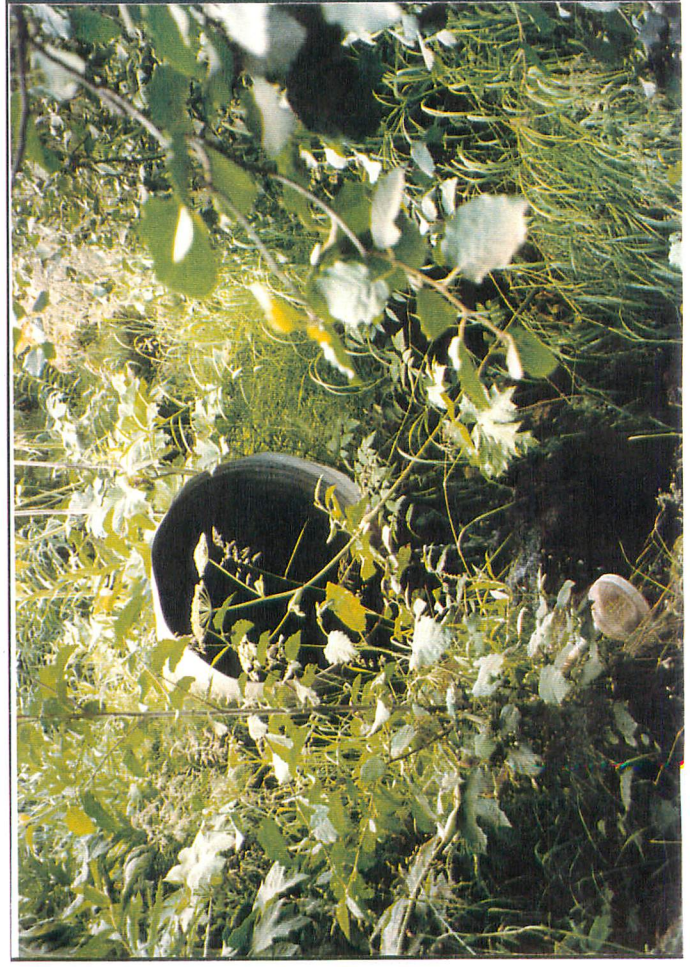


Photo 171. Owen Lake Trib. OW25, R1, Site 74 - Road Culvert



Photo 172. Owen Lake Trib. OW25.1, R1, Site 75 - Downstream

OWEN CREEK STREAM INVENTORY PHOTODOCUMENTATION - June - July 1998



Photo 173. Owen Lake Trib. OW25.1, R1, Site 75 - Upstream



Photo 174. Owen Lake Trib. OW25, R3, Site 76 - Upstream



Photo 175. Owen Lake Trib. OW25, R3, Site 76 - Downstream



Photo 176. Owen Lake Trib. OW25, R3, Site 76 - Ponds Along Road

OWEN CREEK STREAM INVENTORY PHOTODOCUMENTATION - June - July 1998

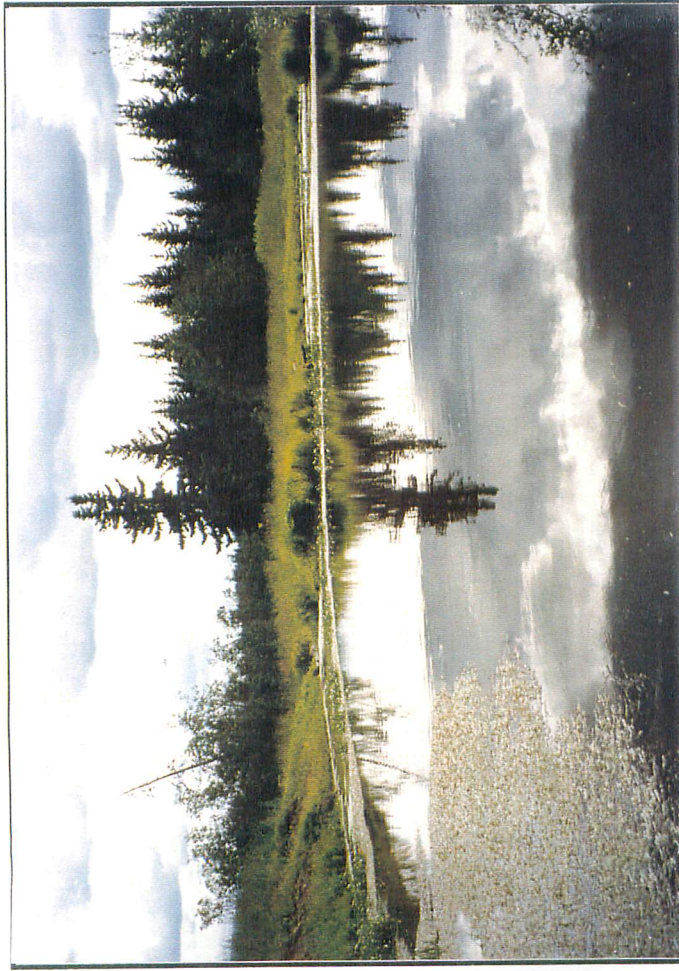


Photo 177. Owen Lake Trib. OW25, R3, Site 76 - Ponds Along Road

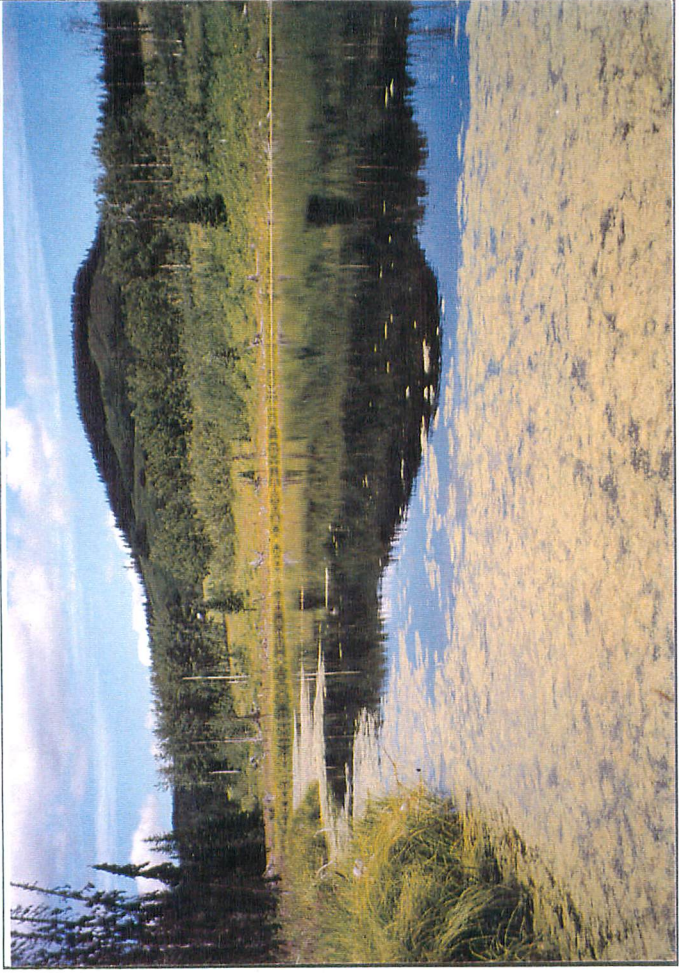


Photo 178. Owen Lake Trib. OW25, R5, Site 77 - Cole Lake



Photo 179. Owen Lake Trib. OW25, R5, Site 77 - Cole Lake



Photo 180. Owen Lake Trib. OW25, R5, Site 77 - Cole Lake Outlet

OWEN CREEK STREAM INVENTORY PHOTODOCUMENTATION - June - July 1998



Photo 181. Owen Lake Trib. OW25, R5, Site 77 - Cole Lake Outlet



Photo 182. Riddeck C., R1, Site 78 - Upstream



Photo 183. Riddeck C., R1, Site 78 - Downstream



Photo 184. Riddeck C., R1, Site 78 - Road Culvert

OWEN CREEK STREAM INVENTORY PHOTODOCUMENTATION - June - July 1998



Photo 185. Riddeck C., R1, Site 78 - Pond Above Road



Photo 186. Riddeck C., R2, Site 79 - Upstream



Photo 187. Riddeck C., R2, Site 79 - Downstream



Photo 188. Riddeck C., R2, Site 79 - Stream Bank Erosion

OWEN CREEK STREAM INVENTORY PHOTODOCUMENTATION - June - July 1998



Photo 189. Riddeck C., R2, Site 79 - Road Culverts



Photo 190. Riddeck C., R4, Site 80 - Upstream



Photo 191. Riddeck C., R4, Site 80 - Downstream



Photo 192. Riddeck C., R3, Site 80 - 6 m Impassable Falls



OWEN CREEK STREAM INVENTORY PHOTODOCUMENTATION - June - July 1998



Photo 193. Riddeck C., R3, Site 80 - 5 m Chute



Photo 194. Riddeck C., R5, Site 81 - Upstream



Photo 195. Riddeck C., R5, Site 81 - Downstream



Photo 196. Riddeck C., R7, Site 82 - Upstream

OWEN CREEK STREAM INVENTORY PHOTODOCUMENTATION - June - July 1998



Photo 197. Riddeck C., R7, Site 82 - Downstream



Photo 198. Riddeck C. Trib. Ri2, R1, Site 84 - Upstream



Photo 199. Riddeck C. Trib. Ri2, R1, Site 84 - Downstream



Photo 200. Riddeck C. Trib. Ri2, R2, Site 85 - Upstream

OWEN CREEK STREAM INVENTORY PHOTODOCUMENTATION - June - July 1998



Photo 201. Riddeck C. Trib. Ri2, R2, Site 85 - Downstream

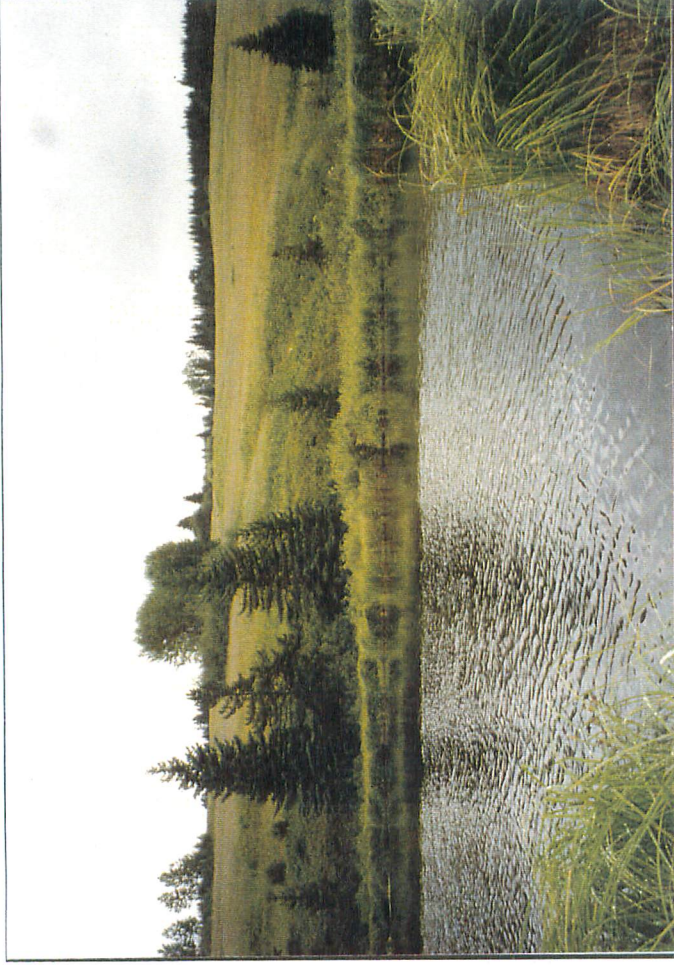


Photo 202. Riddeck C. Trib. Ri2, R2, Site 86 - Pond



Photo 203. Riddeck C. Trib. Ri2, R2, Site 86 - Pond



Photo 204. Riddeck C. Trib. Ri2, R4, Site 87 - Upstream

OWEN CREEK STREAM INVENTORY PHOTODOCUMENTATION - June - July 1998



Photo 205. Riddeck C. Trib. Ri2, R4, Site 87 - Downstream



Photo 206. Riddeck C. Trib. Ri3, R2, Site 88 - Upstream



Photo 207. Riddeck C. Trib. Ri3, R2, Site 88 - Downstream



Photo 208. Riddeck C. Trib. Ri3, R1 - 12 m Impassable Falls

OWEN CREEK STREAM INVENTORY PHOTODOCUMENTATION - June - July 1998



Photo 209. Riddeck C. Trib. Ri3, R3, Site 89 - Upstream



Photo 210. Riddeck C. Trib. Ri3, R3, Site 89 - Downstream



Photo 211. Riddeck C. Trib. Ri5, R1, Site 90 - Upstream



Photo 212. Riddeck C. Trib. Ri5, R1, Site 90 - Downstream

OWEN CREEK STREAM INVENTORY PHOTODOCUMENTATION - June - July 1998



Photo 213. Riddeck C. Trib. R17, R1, Site 91 - Upstream



Photo 214. Riddeck C. Trib. R17, R1, Site 91 - Downstream

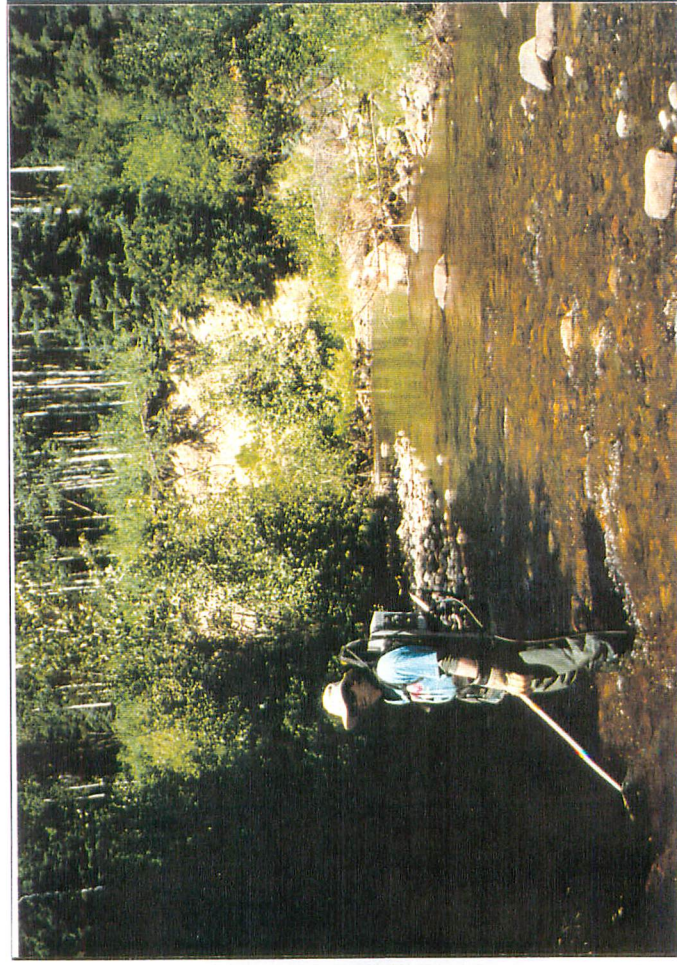


Photo 215. Peter Aleck C., R3, Site 92 - Upstream



Photo 216. Peter Aleck C., R3, Site 92 - Downstream

OWEN CREEK STREAM INVENTORY PHOTODOCUMENTATION - June - July 1998



Photo 217. Peter Aleck C., R3, Site 93 - Upstream



Photo 218. Peter Aleck C., R3, Site 93 - Downstream