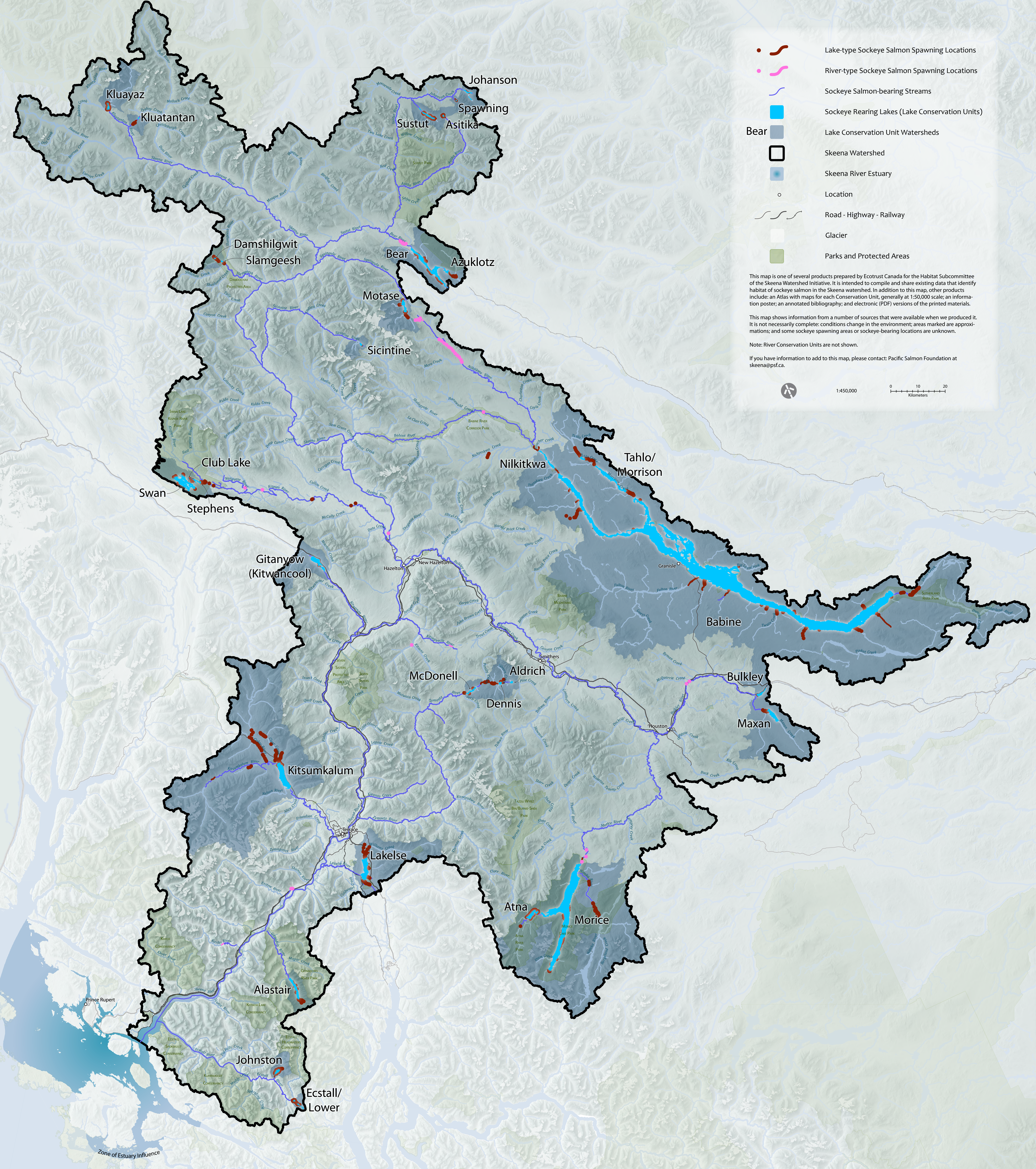


HIGH-VALUE SOCKEYE HABITAT OF THE SKEENA WATERSHED



- Lake-type Sockeye Salmon Spawning Locations
- River-type Sockeye Salmon Spawning Locations
- Sockeye Salmon-bearing Streams
- Sockeye Rearing Lakes (Lake Conservation Units)
- Lake Conservation Unit Watersheds
- Skeena Watershed
- Skeena River Estuary
- Location
- Road - Highway - Railway
- Glacier
- Parks and Protected Areas

This map is one of several products prepared by Ecotrust Canada for the Habitat Subcommittee of the Skeena Watershed Initiative. It is intended to compile and share existing data that identify habitat of sockeye salmon in the Skeena watershed. In addition to this map, other products include: an Atlas with maps for each Conservation Unit, generally at 1:50,000 scale; an information poster; an annotated bibliography; and electronic (PDF) versions of the printed materials.

This map shows information from a number of sources that were available when we produced it. It is not necessarily complete; conditions change in the environment; areas marked are approximations; and some sockeye spawning areas or sockeye-bearing locations are unknown.

Note: River Conservation Units are not shown.

If you have information to add to this map, please contact: Pacific Salmon Foundation at skeena@psf.ca.

