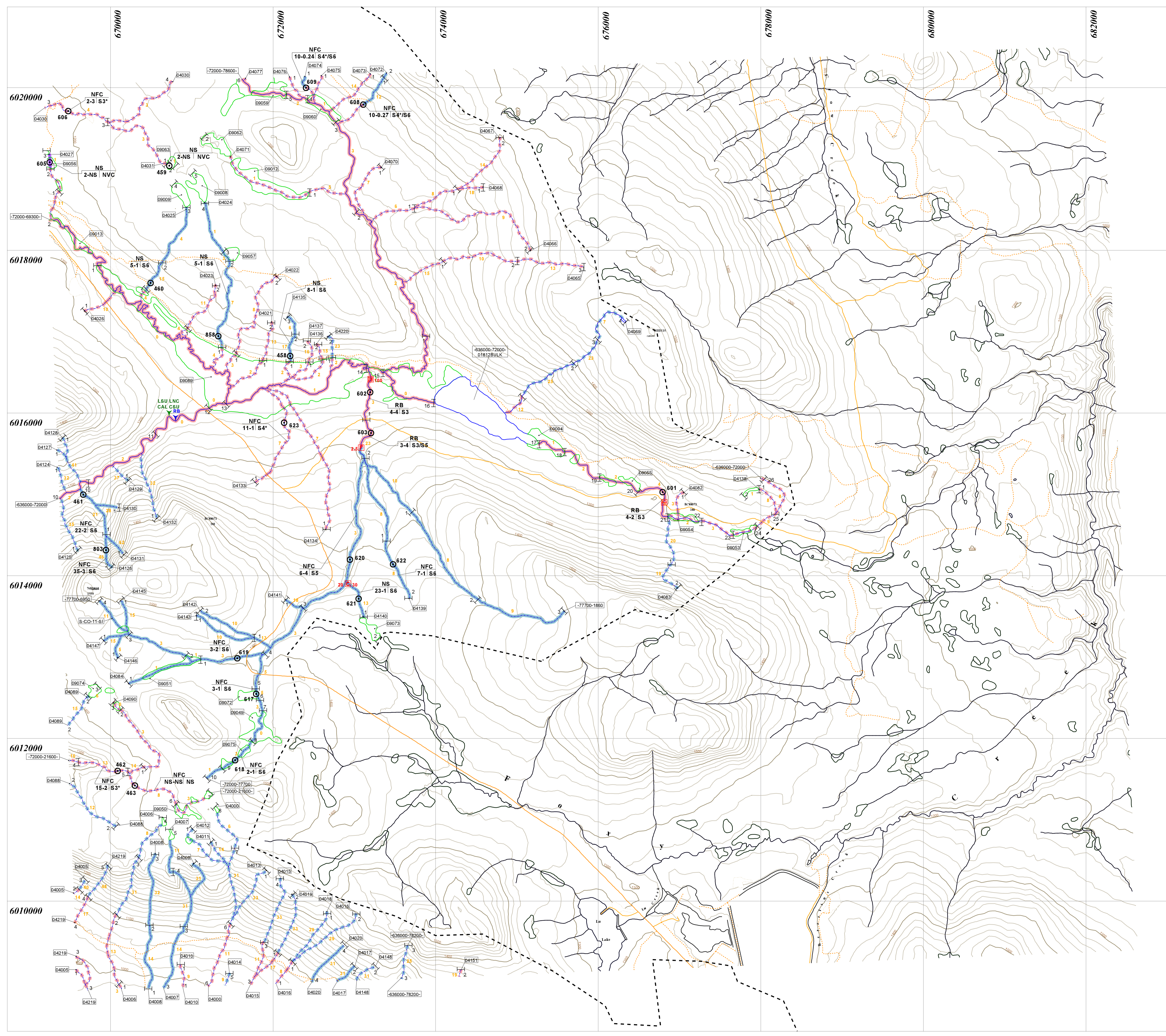
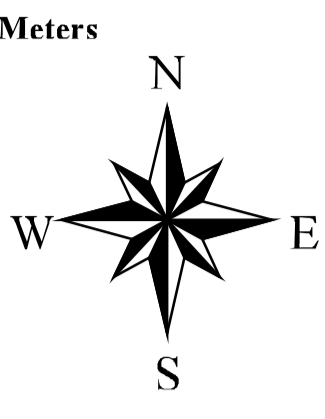


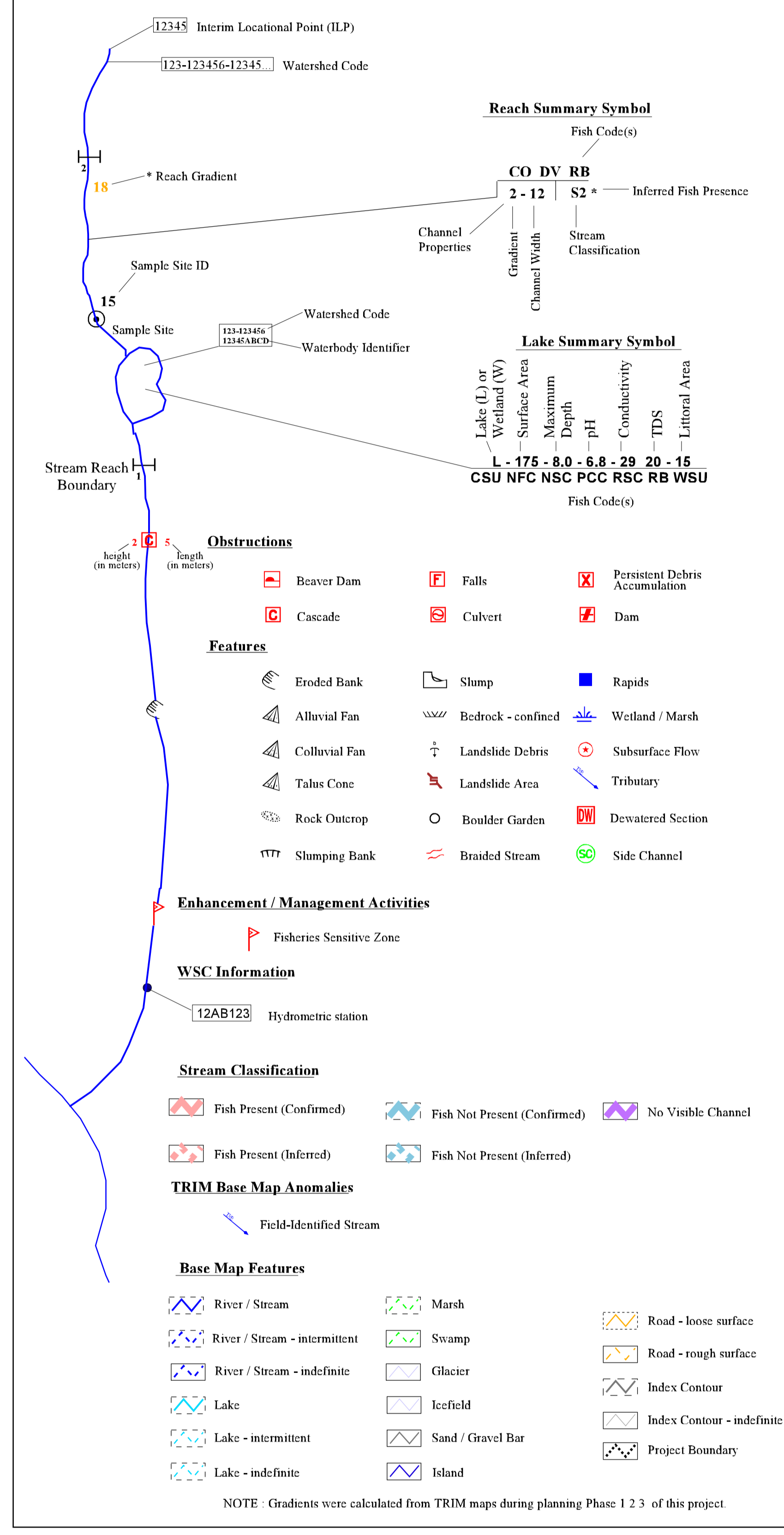


Date: 2000/03/21 (yyyy/mm/dd)

Company: EL of TRITON Environmental Consultants Ltd.



**STREAM INFORMATION SUMMARY**



**FISH SPECIES**

Present		Historical	
CODE	DESCRIPTION	CODE	DESCRIPTION
NFC	No Fish Caught	F	End of Fish Use/No Fish Use
NSS	Not Sampled	S	Fish Presence - Salmon
LNS	Longnose Dace	Y	Fish Presence - Spout
RR	Rainbow Trout	T	Fish Presence - Regionally Significant
RSC	Roadside Shiner	O	Fish Presence - Other
WSH	White Sucker	SA	Fish Observation - Salmon
		SO	Fish Observation - Spout
		SOA	Fish Obs - Regionally Significant
		SOO	Fish Observation - Other
		SOS	Fish Spawning Limit - Salmon

"This product has been accepted as being in accordance with approved standards within the limits of Ministry quality assurance procedures. Users are cautioned that interpreted information on this product developed for the purposes of the Forest Practices Code Act and Regulations, for example stream classifications, is subject to review by a statutory decision maker for the purposes of determining whether or not to approve an operational plan."

INVENTORY SOURCE INFORMATION CODES							
CODE	DESCRIPTION	CODE	DESCRIPTION	CODE	DESCRIPTION		
BASE	Base Map	LSYM	Lake Symbol	APP	Aerial Photography	INVMGMT	Inventory Management (map for conducting inventory)
TRIM	1:20,000 TRIM Maps	INV	Field Inventory	YDN	Video	MELP	Ministry of Environment, Lands & Parks
NTS	1:50,000 NTS Maps	SS	Summary	VPC	Video, Corrected	FISH	Fish Information
OTH	Other Map Source	N/A	Not Applicable	OTH	Other	ENVD	Enhanced Field Inventory
STRSYM	Stream Symbol	OTH	Other	HAB	Habitat Information	ENV	Ecological Field Inventory
INV	Field Inventory	LOC	Location Information	INV	Field Inventory	SS	Summary
SS	Summary	FDE	Field Estimate	N/A	Not Applicable	N/A	Not Applicable
N/A	Not Applicable	PDI	Field GPS	N/A	Not Applicable	OTH	Other
OTH	Other	AFE	Aerial Estimate	OTH	Other	DATE INV	Date of Inventory

FOREST PRACTICES CODE RIPARIAN CLASSES (STREAM CLASSIFICATION)				
Region Class	Average Channel Width (m)	Reserve Zone Width (m)	Management Zone Width (m)	Total RMA Width (m)
S1 - Large River	> 100	0	100	100
S2	5 - 20	10	20	50
S3	1.5 - 5	20	30	40
S4	< 1.5	0	30	30
S5	< 3	0	30	30
S6	< 3	0	20	20

**BASE MAP INFORMATION**  
Projection: UTM  
Datum: NAD83  
UTM Zone: 9

INVENTORY SOURCE INFORMATION			
BASE:	TRIM	STR SYM:	INV
LOC:	FDG	LK SYM:	N/A
HAB:	INV	FISH:	INV
DATE INV:	1998 08 23	INVMGMT:	MELP

**PROJECT STUDY AREA BOUNDARY**

