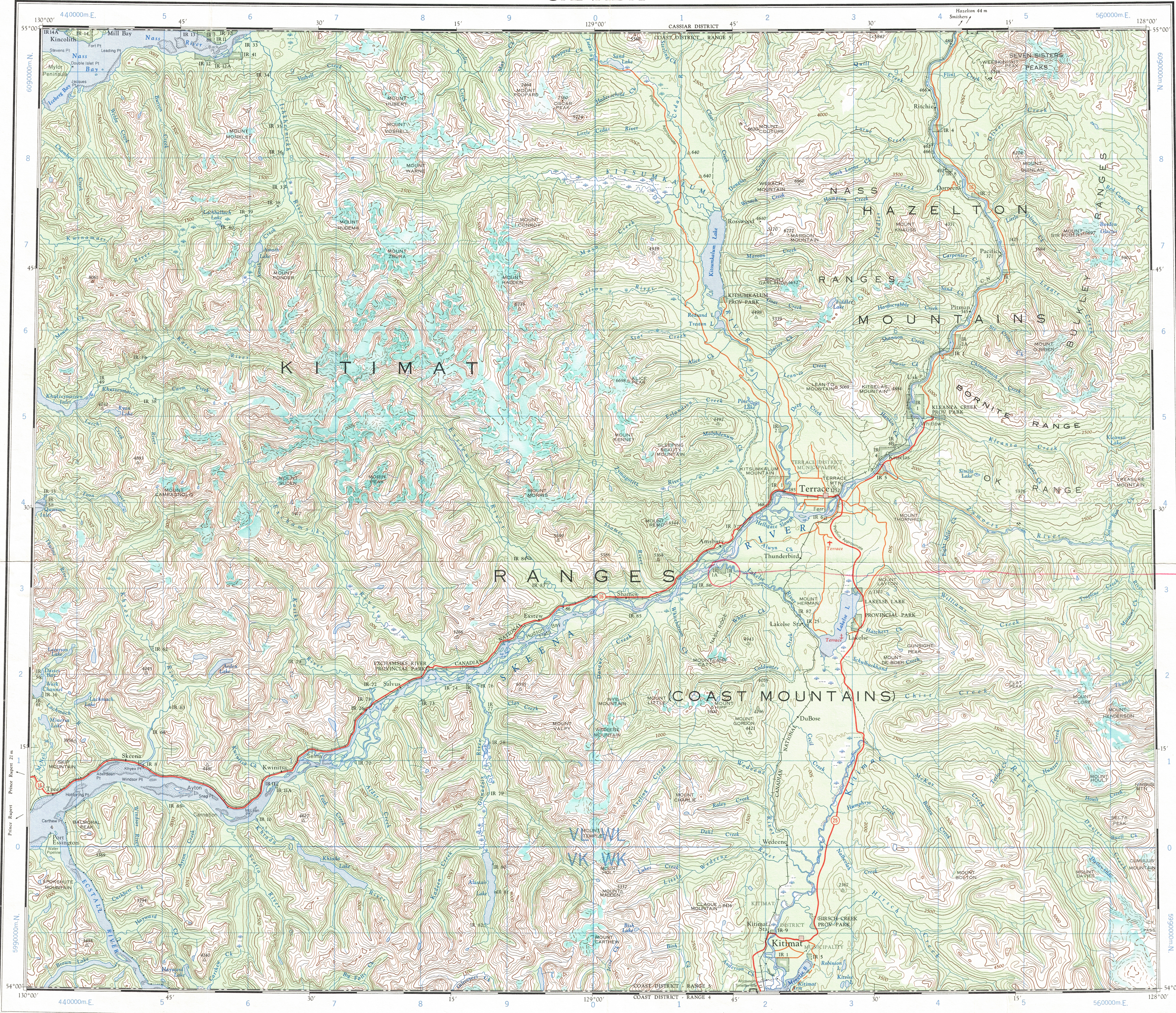


This document was produced by scanning the original publication.

Refer to this map as: 103-I EDITION 1 ASE SERIES A 502



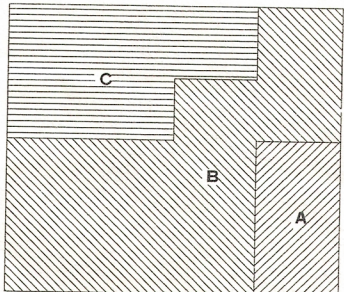
I.R. 141A
DELETED ON 10317
13/06/85 RM

GRID ZONE DESIGNATION	100,000 M. SQUARE IDENTIFICATION						
9U	<table border="1"> <tr> <td>VL</td> <td>WL</td> <td>60</td> </tr> <tr> <td>VK</td> <td>VK</td> <td>5</td> </tr> </table>	VL	WL	60	VK	VK	5
VL	WL	60					
VK	VK	5					

TO GIVE A REFERENCE TO NEAREST 1000 METRES
 EXAMPLE: FLAGSTOP
 SQUARE: Read letters of 100,000 m. square: WL
 EASTING: Read number on grid line immediately to left of point
 Elevation: metric of a square from this line eastward to point. 0
 NORTHING: Read number on grid line immediately below point
 Elevation: metric of a square from this line northward to point. 4
 MILITARY GRID REFERENCE to nearest 1000 metres: WLO429
 If reporting beyond 18° in any direction, prefix Grid Zone Designation as: 9UWL0429

TEN THOUSAND METRE UNIVERSAL TRANSVERSE MERCATOR GRID ZONE 9

RELIABILITY DIAGRAM - COQUIS D'EXACTITUDE

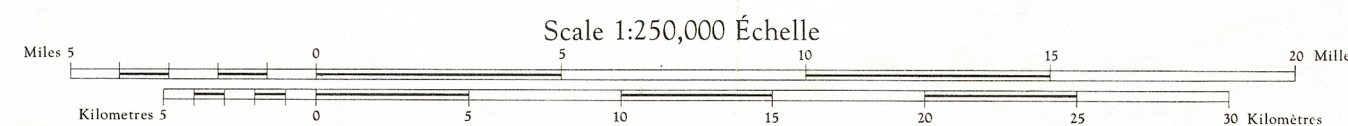


A. Stereo compiled from 1955-56 aerial photography
B. Large scale maps, photogrammetric, 1956-62
C. Large scale manuscripts, photogrammetric, 1955-57

Printed 1967 by the SURVEYS AND MAPPING BRANCH, DEPARTMENT OF ENERGY, MINES AND RESOURCES, Ottawa, Ontario.

Magnetic declination 1966 varies from 27'00" westerly at centre of west edge to 26'47" westerly at centre of east edge. Mean annual change 3.5 westerly.
For complete reference see reverse side.

TERRACE BRITISH COLUMBIA

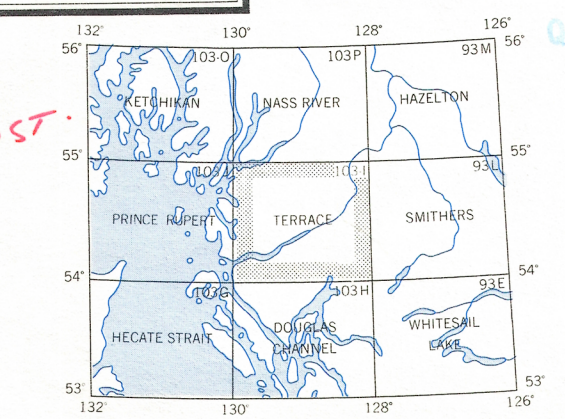


Transverse Mercator Projection
North American Datum 1927
Contour Interval 500 feet
Elevations in feet above Mean Sea Level

Établi en 1964 par la DIRECTION DES LEVÉS ET DE LA CARTOGRAPHIE, MINISTÈRE DE L'ÉNERGIE, DES MINES ET DES RESSOURCES, Ottawa, Ontario.

La déclinaison magnétique pour 1966 varie de 27'00" Est au centre de la limite Ouest à 26'47" Est au centre de la limite Est. Variation moyenne annuelle 3.5 Ouest.
Pour une liste complète des signes, voir au verso.

NOTE ORIGINAL FILE LOST



Index to adjoining sheets of National Topographic System
Tableau d'assemblage du Système national de référence cartographique