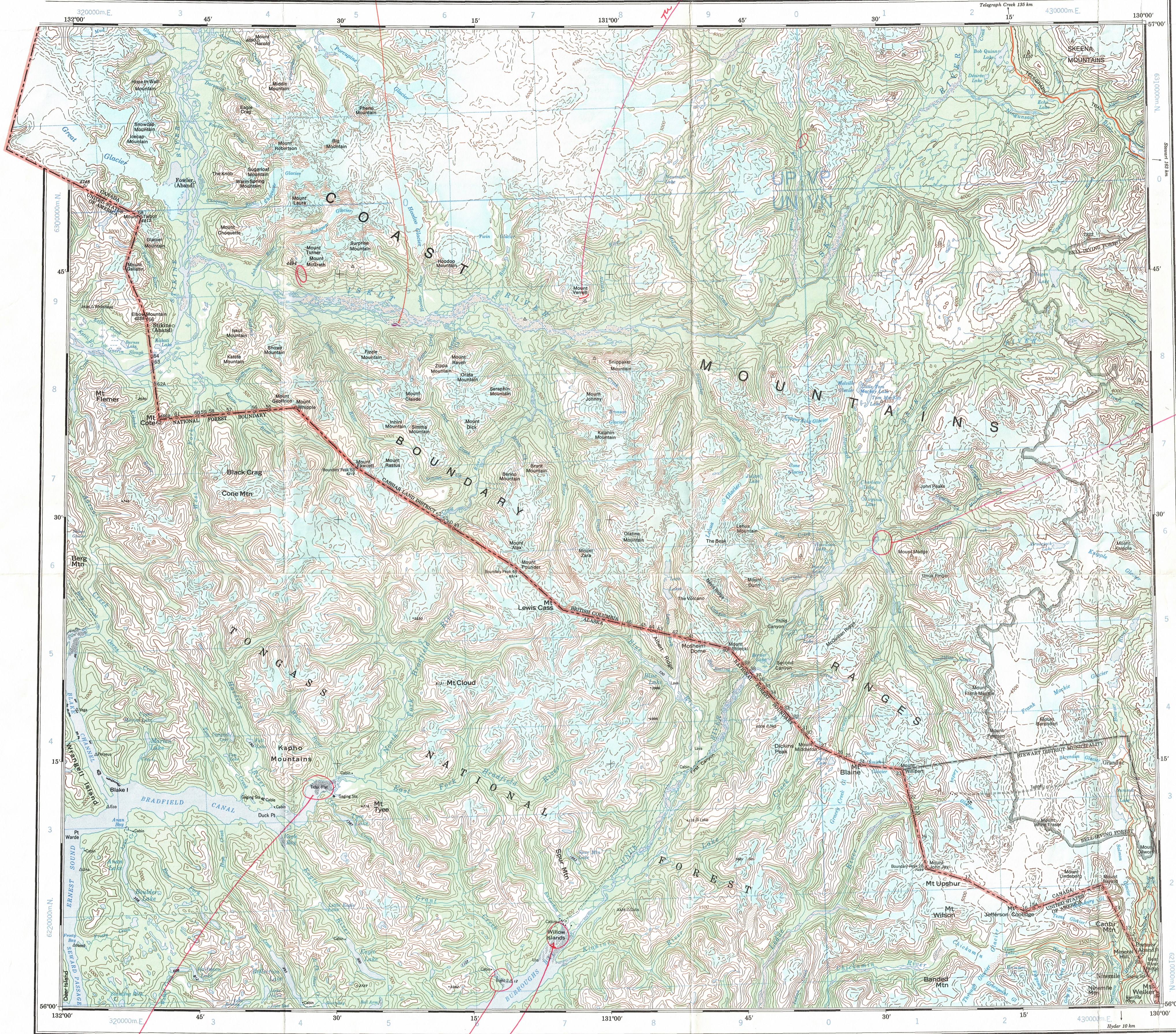
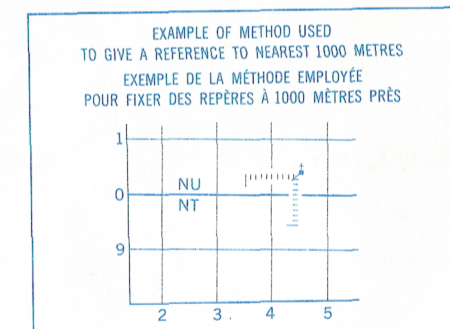
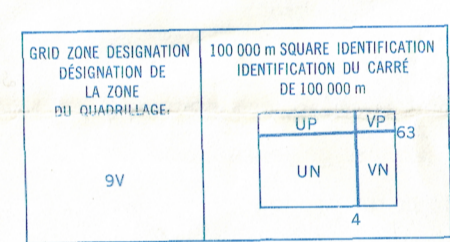


This document was produced by scanning the original publication.

Military users, refer to this map as: MAP 104B & 104C CARTE ÉDITION 2 MCE ÉDITION

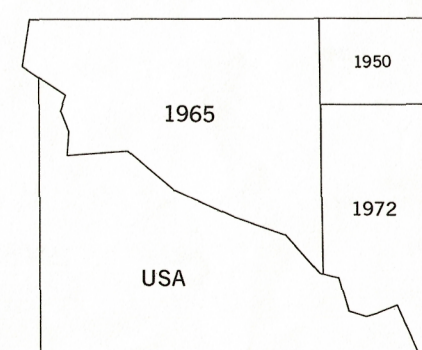


TEN THOUSAND METRE UNIVERSAL TRANSVERSE MERCATOR GRID ZONE 9



REFERENCE POINT CHURCH - EGLISE (see above) POINT DE REPÈRE (voir ci-dessus) SQUARE: Road letters of 100 000 square metres CARRE: Lignes des lettres du carré de 100 000 m

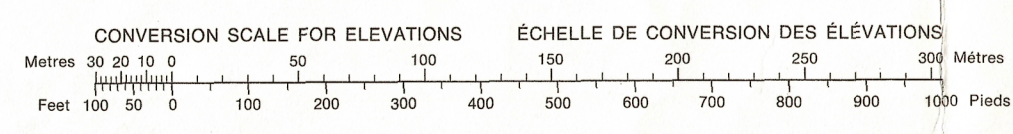
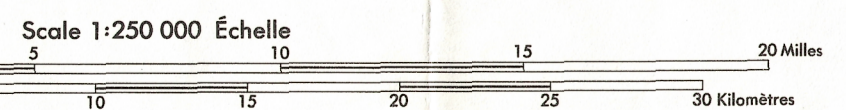
TOPOGRAPHICAL SURVEY DIRECTORATE SERVICE TOPOGRAPHIQUE DATE: 1-1-53 Q.C. APPROVES RELEASE C.O. APPROUVE



Produced by the SURVEYS AND MAPPING BRANCH, DEPARTMENT OF ENERGY, MINES AND RESOURCES. Derived from 1:50 000 maps. Information current as shown in diagram. Published in 1982.

© 1983, Her Majesty the Queen in Right of Canada. Department of Energy, Mines and Resources.

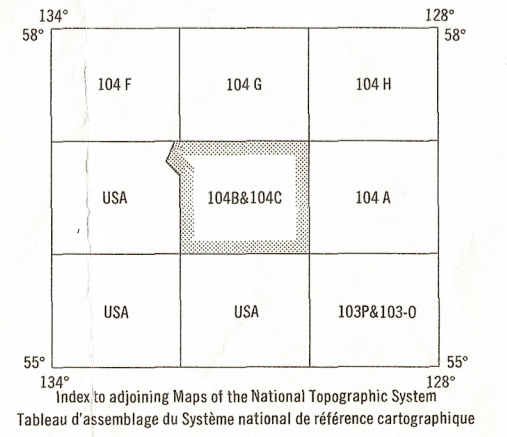
ISKUT RIVER CANADA - UNITED STATES OF AMERICA



- Roads: loose or stabilized surface, all weather; loose surface, dry weather; cart track; trail, cut line or portage. Routes: gravel, aggloméré, toute saison; 2 lines or more; less than 2 lines; 2 voies ou plus; moins de 2 voies; sentier, percée ou portage.

Magnetic declination 1982 varies from 27°00' easterly at centre of west edge to 27°00' easterly at centre of east edge. Mean annual change decreasing 7.6'.

Échelle sur la DIRECTION DES LÉVÉS et DE LA CARTOGRAPHIE. MINISTÈRE DE L'ÉNERGIE, DES MINES ET DES RESSOURCES. Titre de carte au 1:50 000. Renseignements à jour tels qu'indiqués au diagramme. Publié en 1982.



ISKUT RIVER 104B & 104C EDITION 2

Energy, Mines and Resources Canada / Énergie, Mines et Ressources Canada