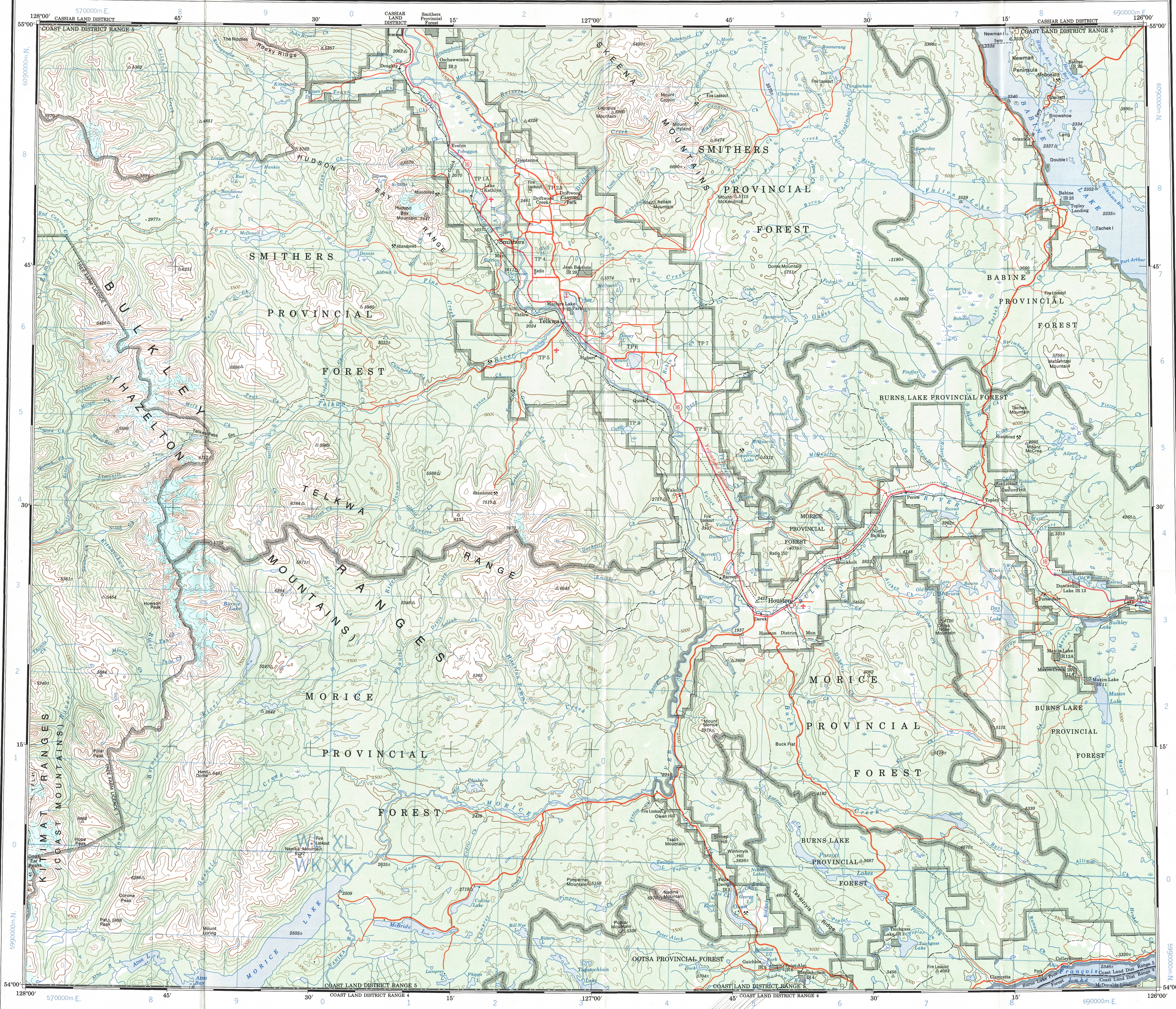
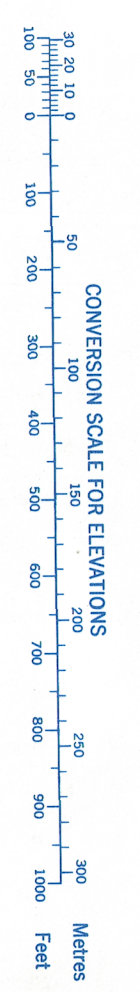


Ce document est le produit d'une numérisation par balayage de la publication originale.
This document was produced by scanning the original publication.

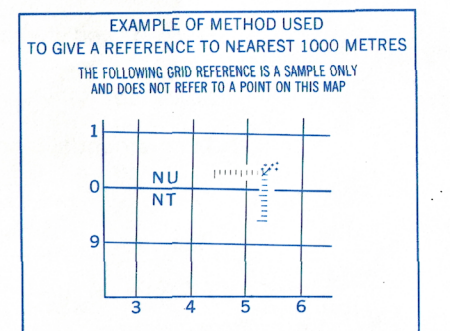
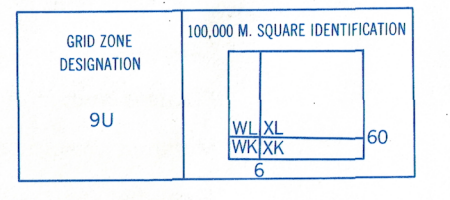


Refer to this map as: 93 L EDITION 3 MCE SERIES A 502



TOPOGRAPHICAL SURVEY DIRECTORATE
SERVICE TOPOGRAPHIQUE
Approved DATE 18-07-85
Q.C. APPROVES RELEASE
C.Q. APPROUVE

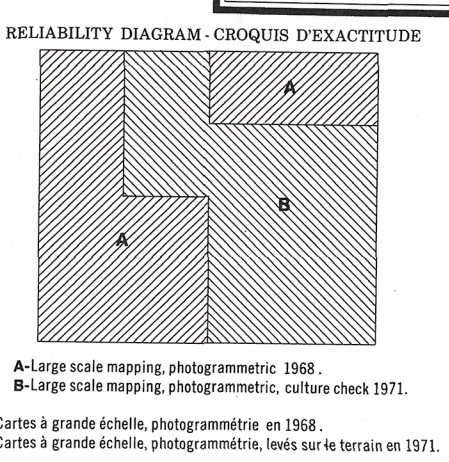
TEN THOUSAND METRE
UNIVERSAL TRANSVERSE MERCATOR GRID
ZONE 9



REFERENCE POINT ROCKS (as above)

SQUARE: Read letters of 100,000 m square: NU	5
EASTING: Read number on grid line immediately to left of point. Estimate tenths of a square from this line eastward to point.	5.4
NORTHING: Read number on grid line immediately below point. Estimate tenths of a square from this line northward to point.	12.4

EXAMPLE MILITARY GRID REFERENCE: NU5404
If reporting beyond 10' in any direction, prefix Grid Zone Designation as: 15NVU5404



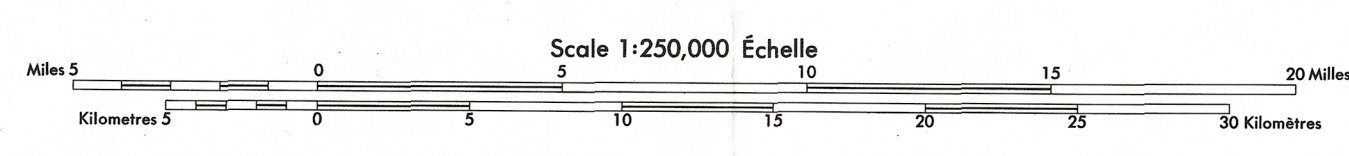
Produced 1975, by the SURVEYS AND MAPPING BRANCH,
DEPARTMENT OF ENERGY, MINES AND RESOURCES.
Printed 1975.

Magnetic declination 1974 varies from 27°20' easterly at centre of west edge to 25°20' easterly at centre of east edge. Mean annual change 3.15' westerly.

M H

Roads:	2 lanes	more than 2 lanes
hard surface, all weather	2 lanes	less than 2 lanes
loose or stabilized surface, all weather	2 lanes or more	less than 2 lanes
loose surface, dry weather		
cart track		
trail or portage		

FOR COMPLETE REFERENCE SEE REVERSE SIDE



SMITHERS BRITISH COLUMBIA

CONTOUR INTERVAL 500 FEET
Elevations in Feet above Mean Sea Level
North American Datum 1927
Transverse Mercator Projection

ÉCHARTONNEMENT DES COURBES 500 PIEDS
Élévations en pieds au-dessus du niveau moyen de la mer
Système de référence géodésique nord-américain, 1927
Projection Transverse de Mercator

Copies may be obtained from the Canada Map Office,
Department of Energy, Mines and Resources, Ottawa,
or your nearest map dealer.

Ces cartes sont en vente au Bureau des Cartes du Canada,
ministère de l'Énergie, des Mines et des Ressources, Ottawa,
ou chez le vendeur le plus près.

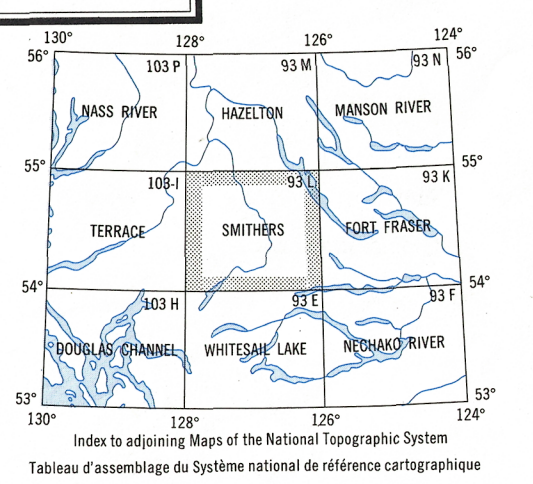
© Canada 1975. Tous droits réservés.

Établie en 1975, par la DIRECTION DES LEVÉS ET DE LA CARTOGRAPHIE,
MINISTÈRE DE L'ÉNERGIE, DES MINES ET DES RESSOURCES.

La déclinaison magnétique pour 1974 varie de 27°20' Est au centre de la limite Ouest à 25°20' Est au centre de la limite Est. Variation moyenne annuelle 3'15" Ouest.

Routes:	2 chaussées séparées	plus de 2 voies
paillée, toute saison	2 voies	moins de 2 voies
gravier aggloméré, toute saison	2 voies ou plus	moins de 2 voies
de gravier, période sèche		
de terre		
sentier ou portage		

POUR UNE LISTE COMPLÈTE DES SIGNES, VOIR AU VERSO



7-83-L