

**Juvenile Salmon Distribution in the intertidal foreshores of Prince
Rupert and Port Edward Harbours**

An Interim Report



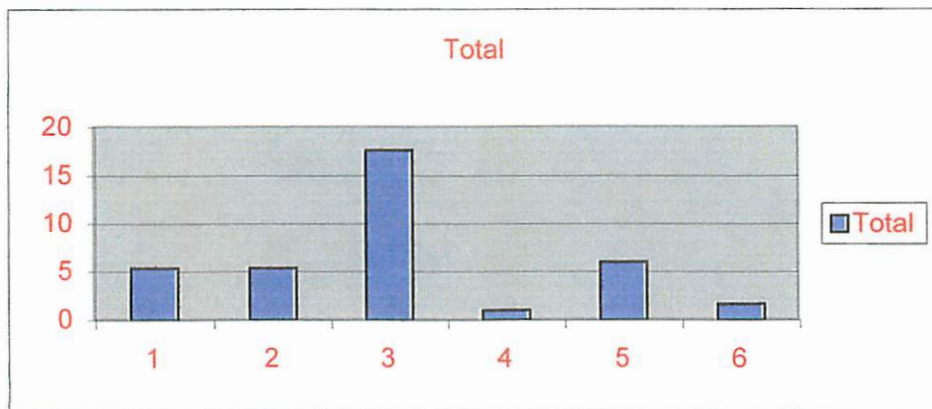
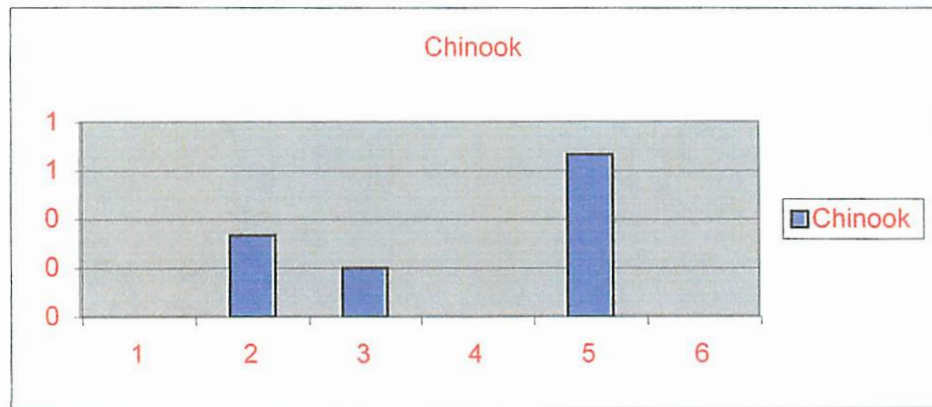
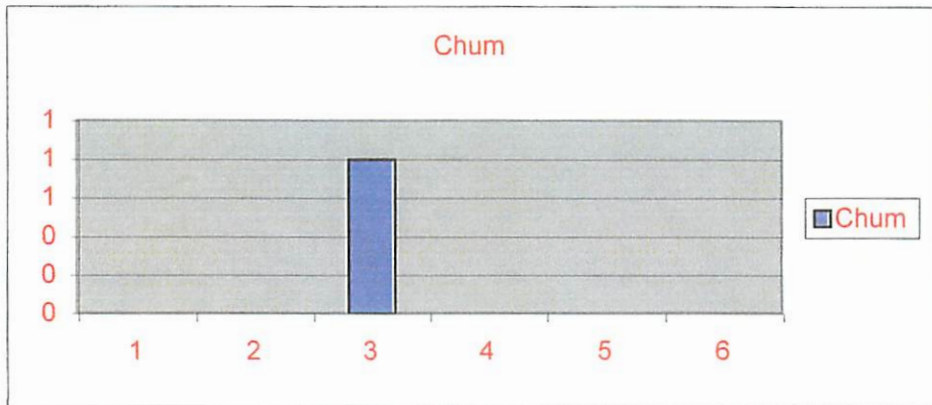
**Prepared by Community Fisheries Development Centre
Bruce Hansen and Gerry O'Connor Project Managers**

Contents

Introduction	Page 3
Methodology	Page 5
Synopsis	Page 6
Summary	Page 8
Recommendations	Page 9
Appendix	Page 10

Juvenile Salmon Densities in the Intertidal Foreshores of
Prince Rupert and Port Edward Harbours

Wainwright Basin Highway 16
CPUE

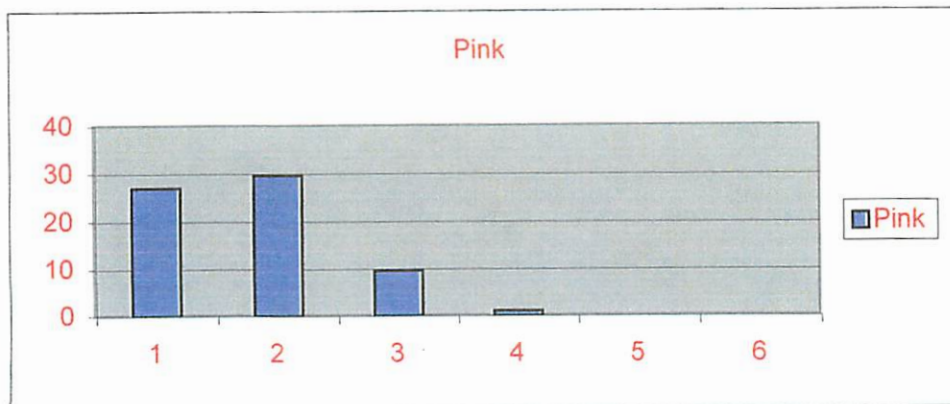
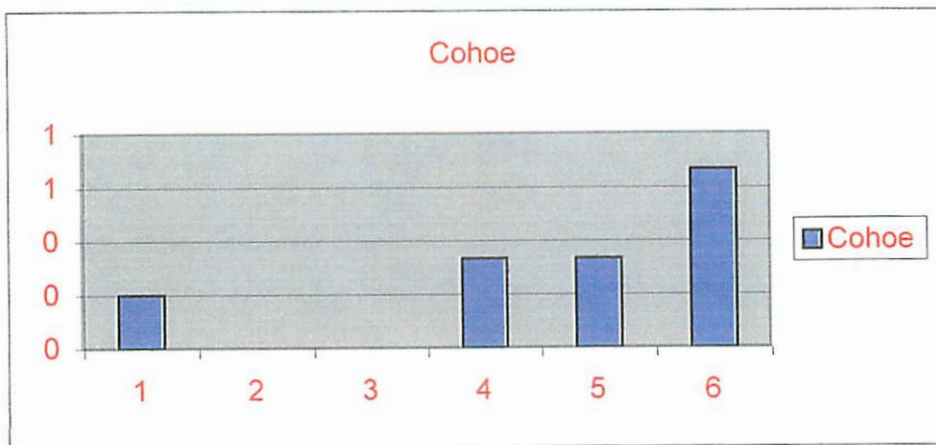
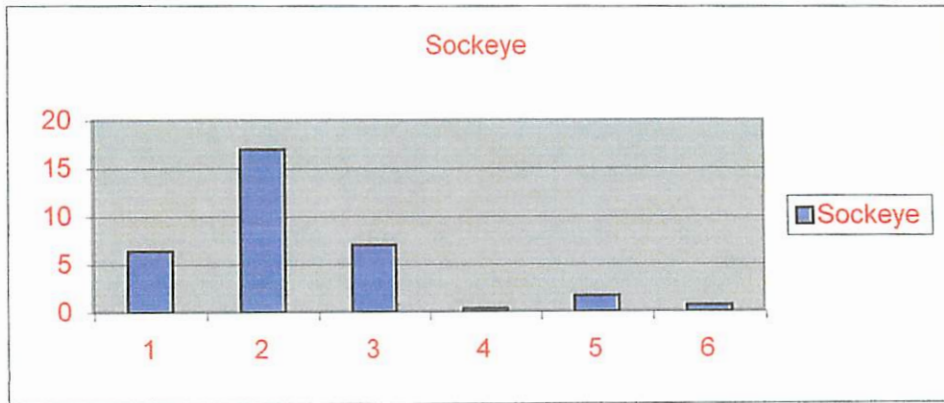


Wainwright Basin Pipeline

Date	Set	Sockeye	Cohoe	Pink	Chum	Chinook	Total	Tide*	Wind	Other Specie*
6-Jun	1	0	0	0	0	3	3	+1	10W	0
6-Jun	2	16	0	1	0	7	24	+1	10W	9
6-Jun	3	16	1	134	0	0	151	-1	Nil	89
6-Jun	4	0	0	0	0	0	0	-1	Nil	1
6-Jun	5	0	0	0	0	0	0	-1	Nil	38
Sub Total		32	1	135	0	10	178			
CPUE		6	0	27	0	2	36			
15-Jun	1	45	0	56	0	3	104	+1	Nil	28
15-Jun	2	3	0	26	0	1	30	-0	Nil	3801
15-Jun	3	3	0	7	0	0	10	-1	5W	762
Sub Total		51	0	89	0	4	144			
CPUE		17	0	30	0	1	48			
20-Jun	1	11	0	14	0	0	25	+2	Nil	12
20-Jun	2	8	0	11	0	0	19	+0	Nil	137
20-Jun	3	2	0	4	0	1	7	-0	Nil	889
Sub Total		21	0	29	0	1	51			
CPUE		7	0	10	0	0	17			
29-Jun	1	0	0	0	0	0	0	+1	Nil	3
29-Jun	2	1	1	2	0	0	4	+1	Nil	8
29-Jun	3	0	0	1	0	0	1	+1	Nil	122
Sub Total		1	1	3	0	0	5			
CPUE		0	0	1	0	0	2			
5-Jul	1	3	0	0	0	0	3	+2	Nil	0
5-Jul	2	2	1	0	0	0	3	+1	Nil	12
5-Jul	3	0	0	0	0	0	0	+0	15W	586
Sub Total		5	1	0	0	0	6			
CPUE		2	0	0	0	0	2			
13-Jul	1	0	2	0	0	0	2	+0	Nil	2
13-Jul	2	0	0	0	0	0	0	+1	5W	1
13-Jul	3	2	0	0	0	0	2	-0	Nil	13
Sub Total		2	2	0	0	0	4			
CPUE		1	1	0	0	0	1			
Total Catch		112	5	256	0	15	388			
CPUE		19	1	43	0	3	65			

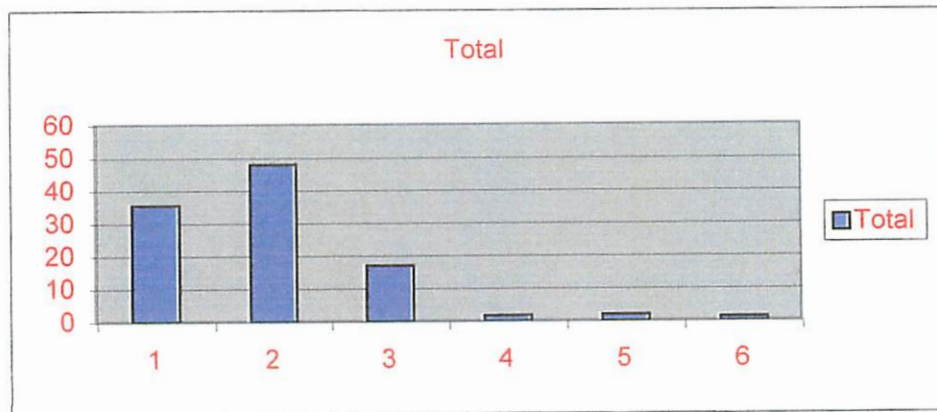
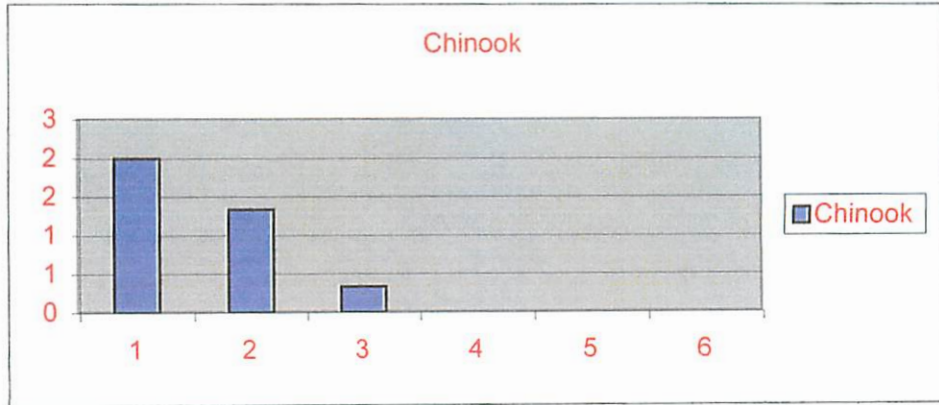
Juvenile Salmon Densities in the Intertidal Foreshores of
Prince Rupert and Port Edward Harbours

Wainwright Basin Highway 37 Pipeline
CPUE



Juvenile Salmon Densities in the Intertidal Foreshores of
Prince Rupert and Port Edward Harbours

Wainwright Basin Highway 37 Pipeline
CPUE

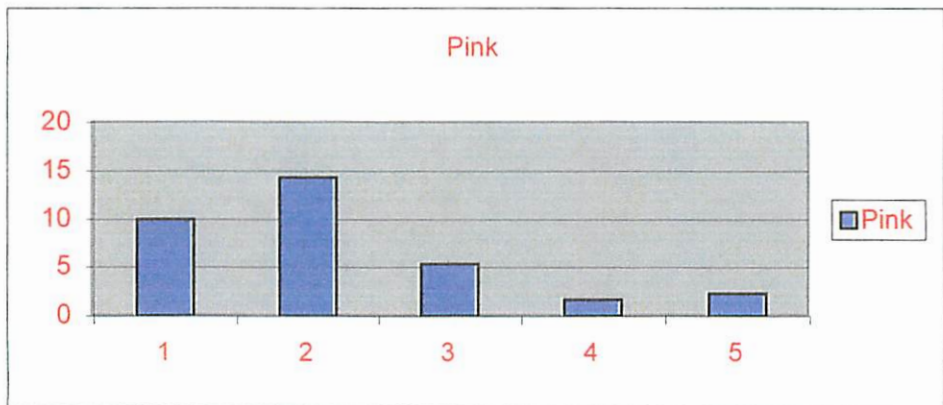
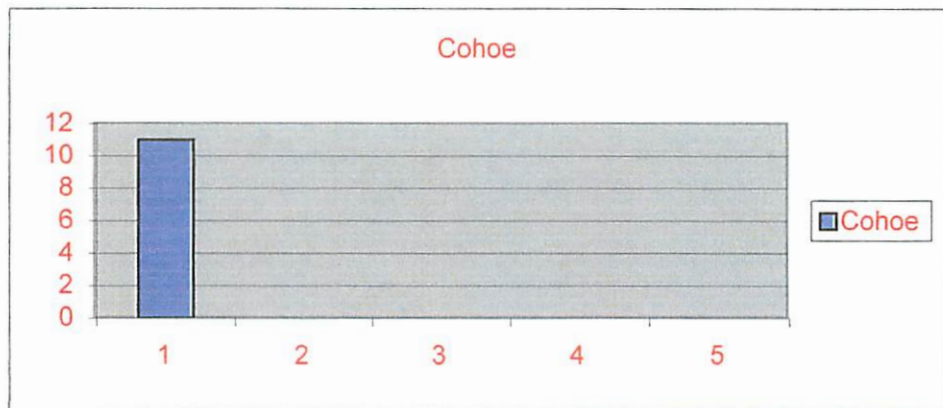
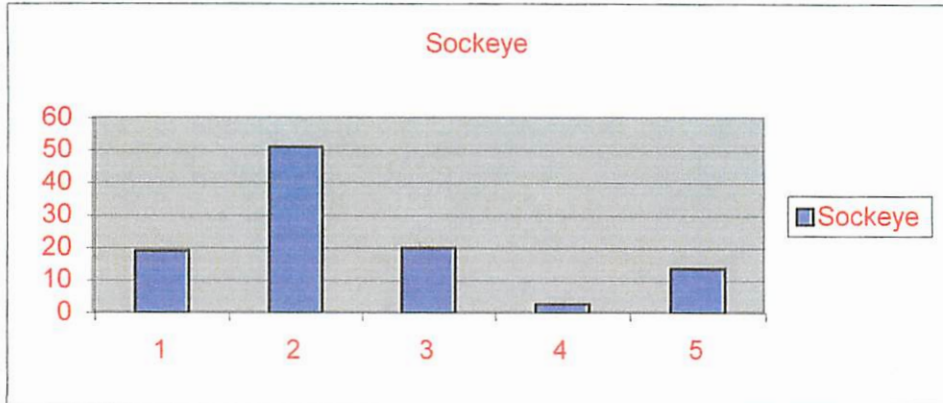


Barrett Rock

Date	Set	Sockeye	Cohoe	Pink	Chum	Chinook	Total	Tide*	Wind	Other Specie*
7-Jun	1	19	11	10	0	25	65	+1	Nil	329
Sub Total		19	11	10	0	25	65			
CPUE		19	11	10	0	25	65			
19-Jun	1	125	0	27	0	7	159	+2	Nil	22
19-Jun	2	0	0	0	0	0	0	+1	Nil	2
19-Jun	3	28	0	16	0	2	46	+1	Nil	87
Sub Total		153	0	43	0	9	205			
CPUE		51	0	14	0	3	68			
26-Jun	1	34	0	4	0	4	42	-3	Nil	378
26-Jun	2	24	0	4	0	3	31	-3	10W	6
26-Jun	3	8	0	0	0	1	9	-4	10W	4
30-Jun	4	0	0	0	0	0	0	+3	Nil	6
30-Jun	5	4	0	0	0	1	5	+3	Nil	105
30-Jun	6	50	0	24	0	1	75	+2	Nil	10
Sub Total		120	0	32	0	10	162			
CPUE		20	0	5	0	2	27			
6-Jul	1	6	0	4	0	1	11	-0	Nil	177
6-Jul	2	1	0	1	0	0	2	-0	Nil	38
6-Jul	3	1	0	0	0	0	1	-1	Nil	1
Sub Total		8	0	5	0	1	14			
CPUE		3	0	2	0	0	5			
12-Jul	1	35	0	5	0	0	40	+2	Nil	0
12-Jul	2	4	0	1	0	0	5	+2	Nil	36
12-Jul	3	2	0	1	0	1	4	+1	Nil	41
Sub Total		41	0	7	0	1	49			
CPUE		14	0	2	0	0	16			
Total Catch		341	11	97	0	46	495			
CPUE		68	2	19	0	9	99			

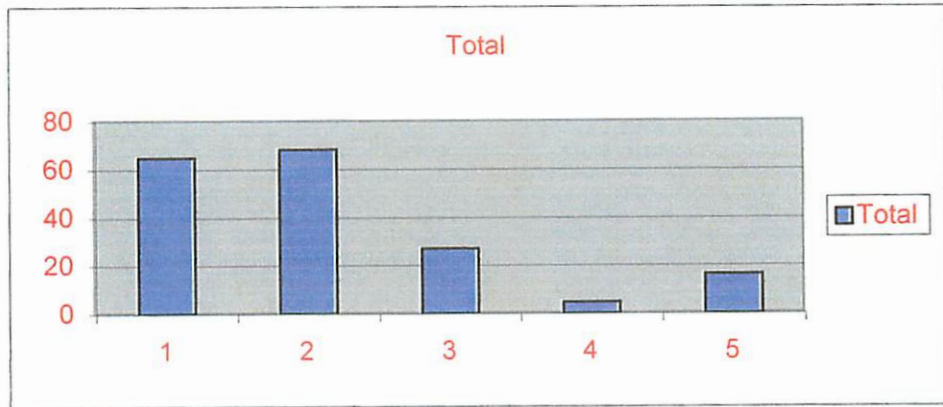
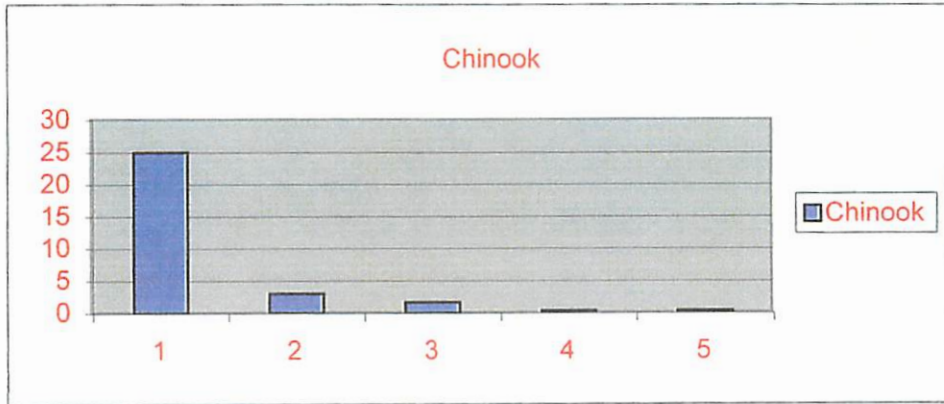
Juvenile Salmon Densities in the Intertidal Foreshores of
Prince Rupert and Port Edward Harbours

Barrett Rock
CPUE



Juvenile Salmon Densities in the Intertidal Foreshores of
Prince Rupert and Port Edward Harbours

Barrett Rock
CPUE



Ridley Island Grain Port

Date	Set	Sockeye	Cohoe	Pink	Chum	Chinook	Total	Tide*	Wind	Other Specie*
16-Jun	1	37	0	16	0	0	53	+5	Nil	312
16-Jun	2	17	0	15	0	0	32	+5	Nil	92
16-Jun	3	9	0	3	0	4	16	+5	Nil	131
Sub Total		63	0	34	0	4	101			
CPUE		21	0	11	0	1	34			
19-Jun	1	3	0	0	0	2	5	+3	Nil	6
19-Jun	2	3	0	0	0	1	4	+3	Nil	0
19-Jun	3	5	0	0	0	1	6	+2	Nil	24
Sub Total		11	0	0	0	4	15			
CPUE		4	0	0	0	1	5			
26-Jun	1	0	0	1	0	1	2	-1	Nil	5
26-Jun	2	26	0	20	0	4	50	-2	Nil	30
26-Jun	3	3	0	4	0	0	7	-2	Nil	479
30-Jun	4	25	0	13	0	0	38	+2	Nil	28
30-Jun	5	48	0	0	0	4	52	+2	Nil	30
30-Jun	6	14	0	0	0	1	15	+1	Nil	20
Sub Total		116	0	38	0	10	164			
CPUE		19	0	6	0	2	27			
6-Jul	1	17	0	7	0	0	24	+1	Nil	15
6-Jul	2	0	0	0	0	0	0	+0	Nil	40
6-Jul	3	10	0	5	0	1	16	+0	Nil	36
6-Jul	4	7	0	0	0	0	7	-0	Nil	79
Sub Total		34	0	12	0	1	47			
CPUE		9	0	3	0	0	12			
12-Jul	1	132	0	43	0	0	175	-1	Nil	24
12-Jul	2	6	0	3	0	0	9	-2	Nil	16
12-Jul	3	0	0	1	0	0	1	-2	Nil	0
Sub Total		138	0	47	0	0	185			
CPUE		46	0	16	0	0	62			
Total Catch		363	12	143	12	27	557			
CPUE		73	2	29	2	5	111			