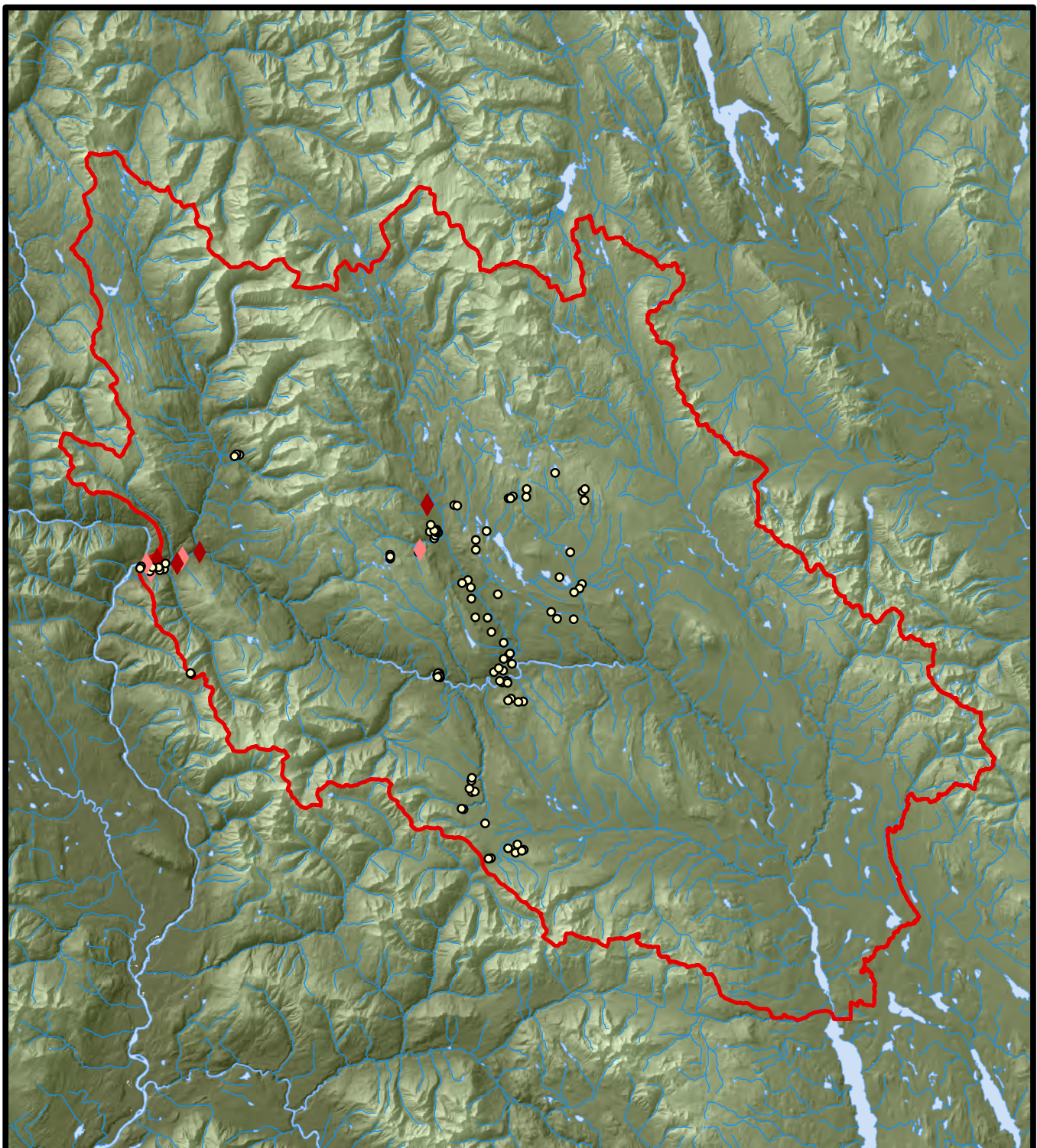


Map 11

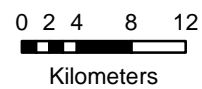


Sites from Kispiox PEM Plot Verification Data

Rare Ecosystems:

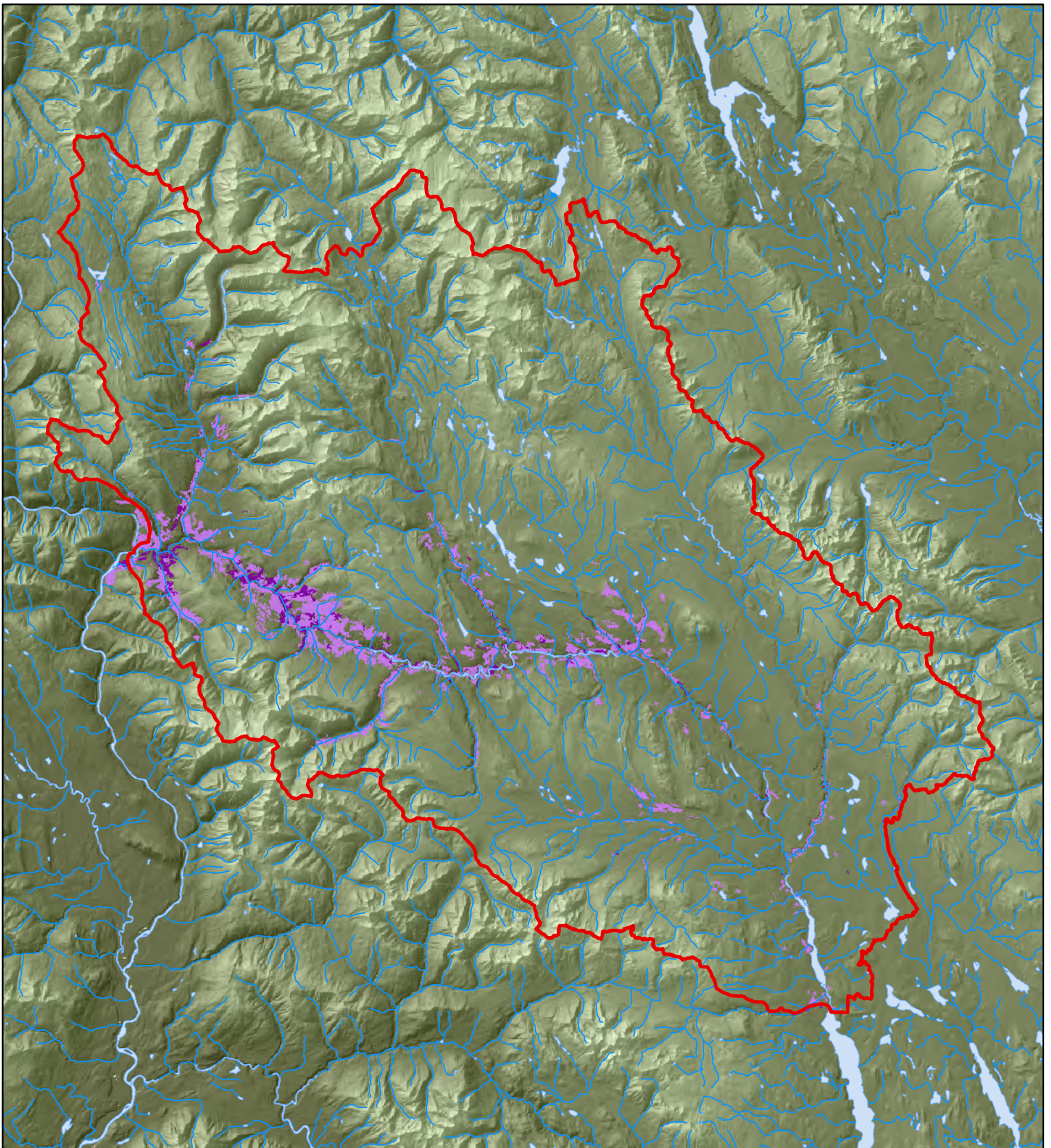
- ◆ Blue- listed
- ◆ Recommended for listing
- Sensitive

- Study Area
- ~ 250k Rivers
- 250k Lakes



UTM Zone 9N NAD83 Datum

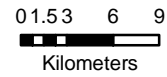
MapSources/Notes:
Data layers provided through BWMT.
Data provided by Gentil Botanical Research.
Mapping April 2012, A.Roberts.



Map 12

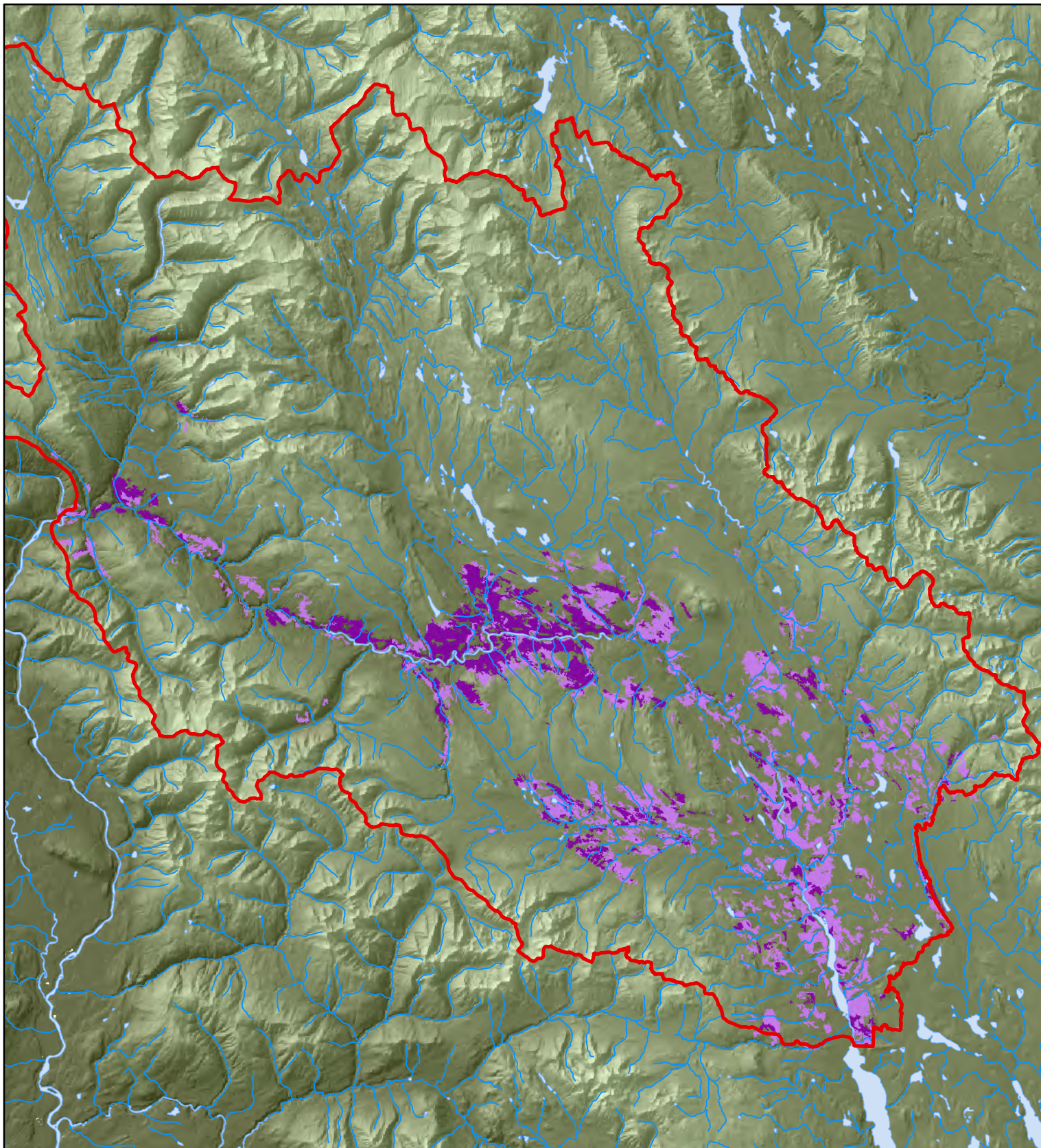
Vegetation Resource Inventory: Black Cottonwood

- Black Cottonwood** ○ BWMT Study Area
- Ac <40%
- Ac >40%
- ~ 250k_Rivers
- 250k_Lakes



UTM Zone 9N NAD83 Datum

MapSources/Notes:
 Data layers provided through BWMT.
 Data provided by Gentil Botanical Research.
 Mapping April 2012, A.Roberts.



Map 13

Vegetation Resource Inventory: Trembling Aspen > 40 years old

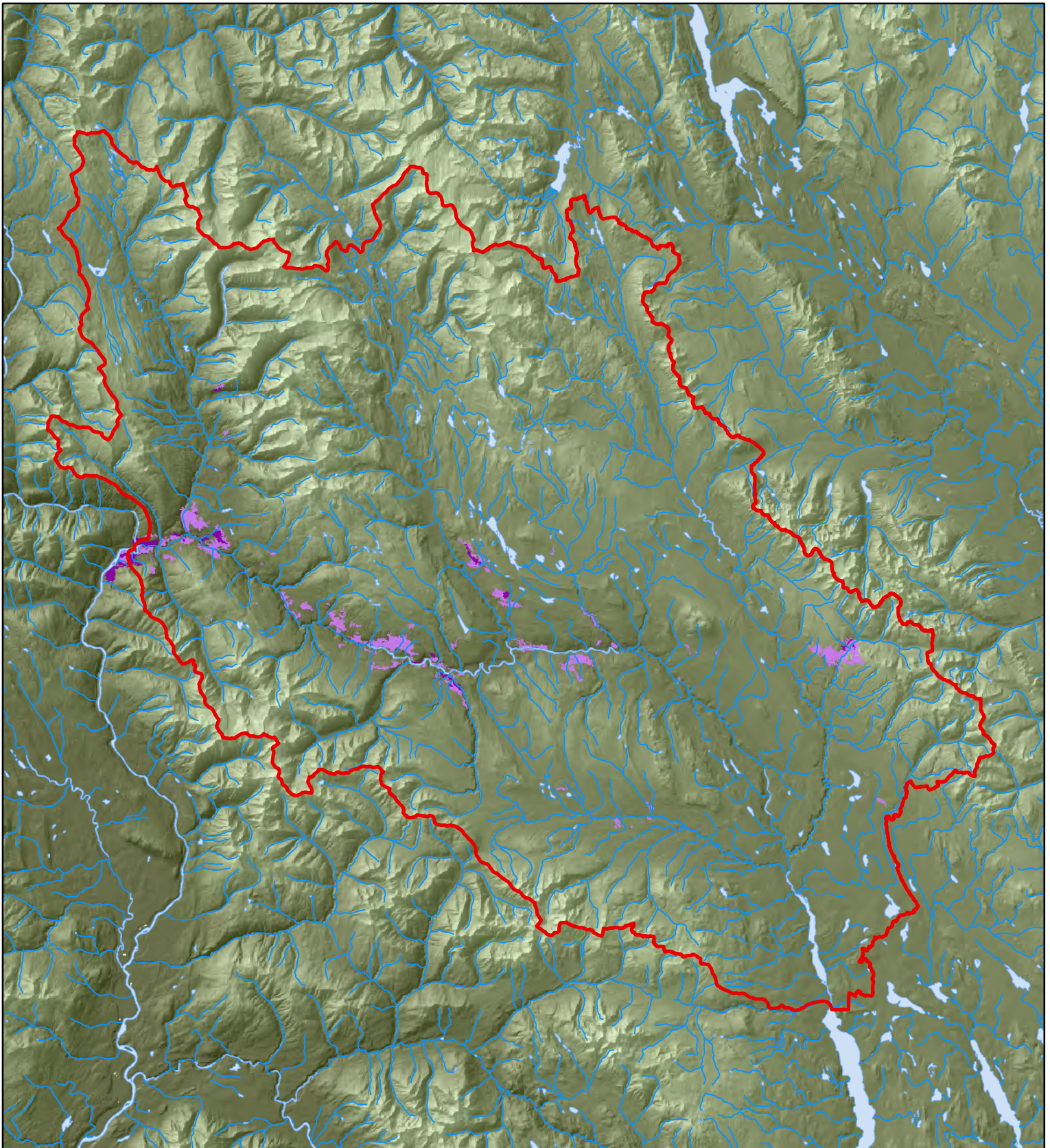
- | | |
|------------------------|-----------------|
| Trembling Aspen | BWMT Study Area |
| At <40% | 250k_Rivers |
| At >40% | 250k_Lakes |

0 1 2 4 6
Kilometers



UTM Zone 9N NAD83 Datum

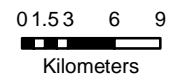
MapSources/Notes:
Data layers provided through BWMT.
Data provided by Gentil Botanical Research.
Mapping April 2012, A.Roberts.



Map 14

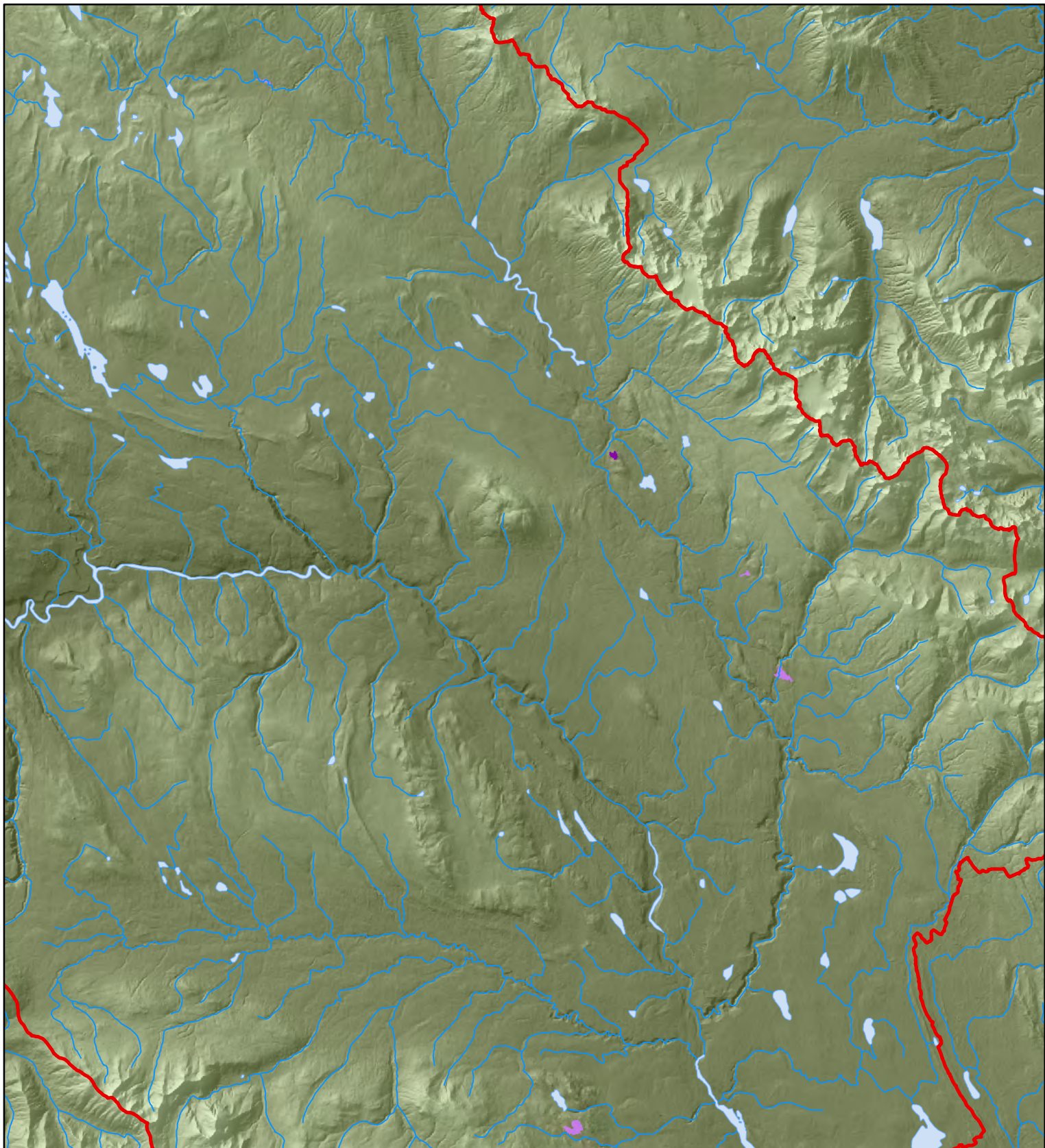
Vegetation Resource Inventory: Paper Birch

- Paper Birch (Ep)**
- Ep <40%
- Ep >40%
- BWMT Study Area
- 250k_Rivers
- 250k_Lakes



UTM Zone 9N NAD83 Datum

MapSources/Notes:
 Data layers provided through BWMT.
 Data provided by Gentil Botanical Research.
 Mapping April 2012, A.Roberts.



Map 15

Vegetation Resource Inventory: Amabilis Fir

- | | |
|---------------------|-----------------|
| Amabilis Fir | BWMT Study Area |
| Ba <40% | 250k_Rivers |
| Ba >40% | 250k_Lakes |

0 0.51 2 3
 Kilometers



UTM Zone 9N NAD83 Datum

MapSources/Notes:
 Data layers provided through BWMT.
 Data provided by Gentil Botanical Research.
 Mapping April 2012, A.Roberts.