






Map 16
Vegetation Resource Inventory: Mountain Hemlock

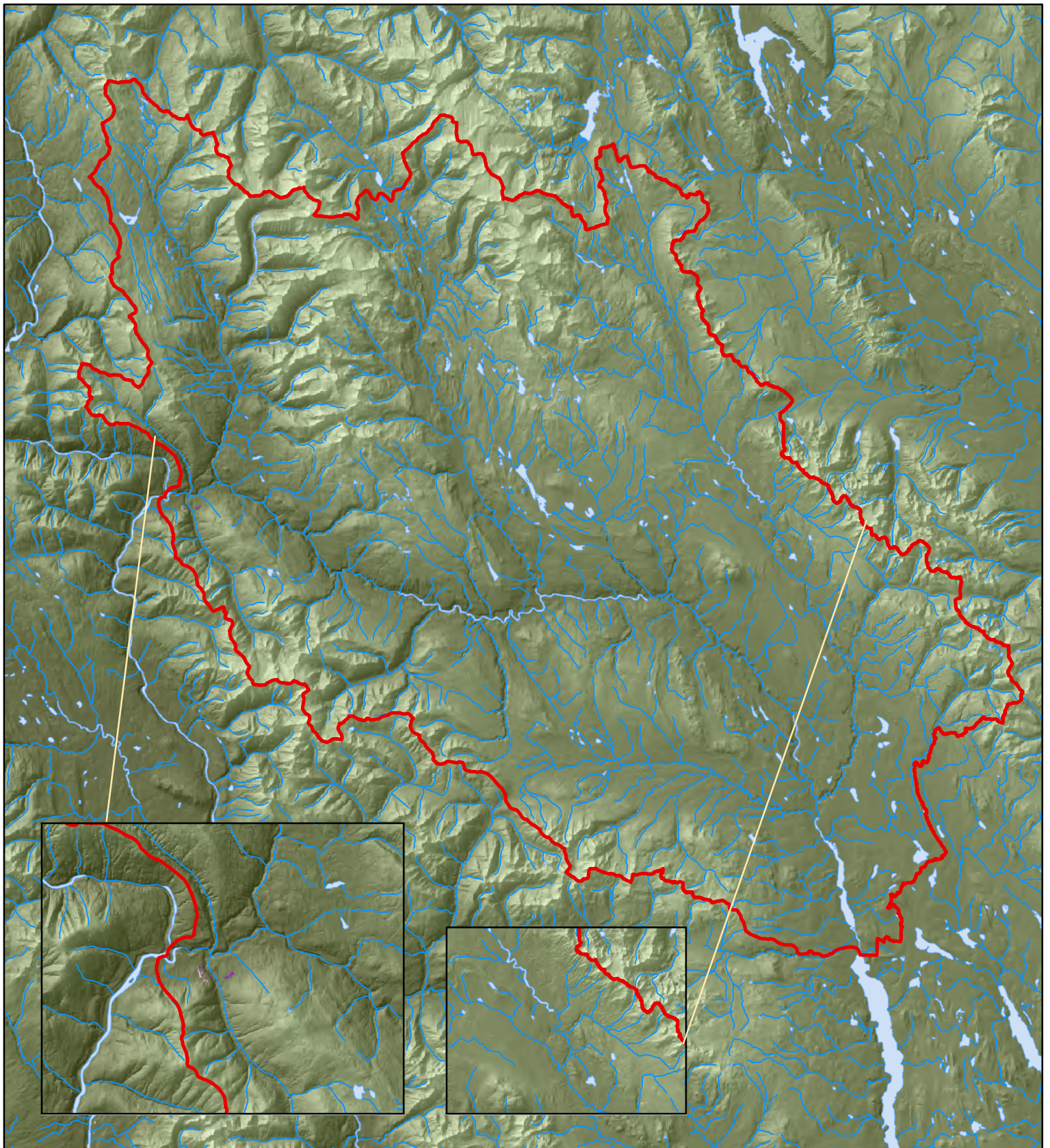
- | | |
|---|---|
|  Hm <40% |  BWMT Study Area |
|  Hm >40% |  250k_Rivers |
| |  250k_Lakes |

0 1.5 3 6 9
 Kilometers




UTM Zone 9N NAD83 Datum


MapSources/Notes:
 Data layers provided through BWMT.
 Data provided by Gentil Botanical Research.
 Mapping April 2012, A.Roberts.





Vegetation Resource Inventory: Western Red Cedar

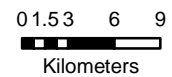
Western Red Cedar  BWMT Study Area

 Cw <40%

 Cw >40%

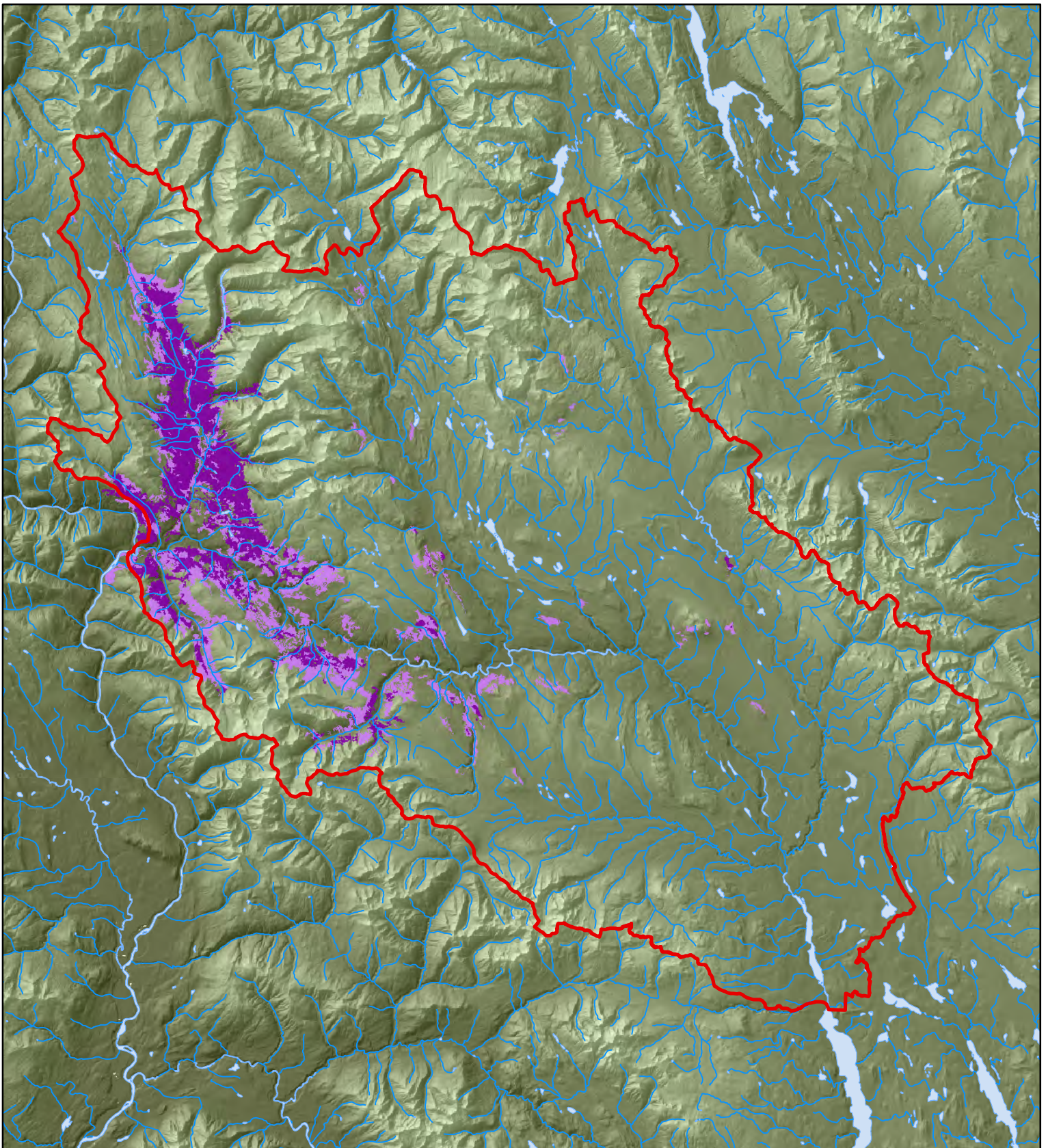
 250k_Rivers

 250k_Lakes



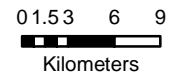
UTM Zone 9N NAD83 Datum

MapSources/Notes:
Data layers provided through BWMT.
Data provided by Gentil Botanical Research.
Mapping April 2012, A.Roberts.



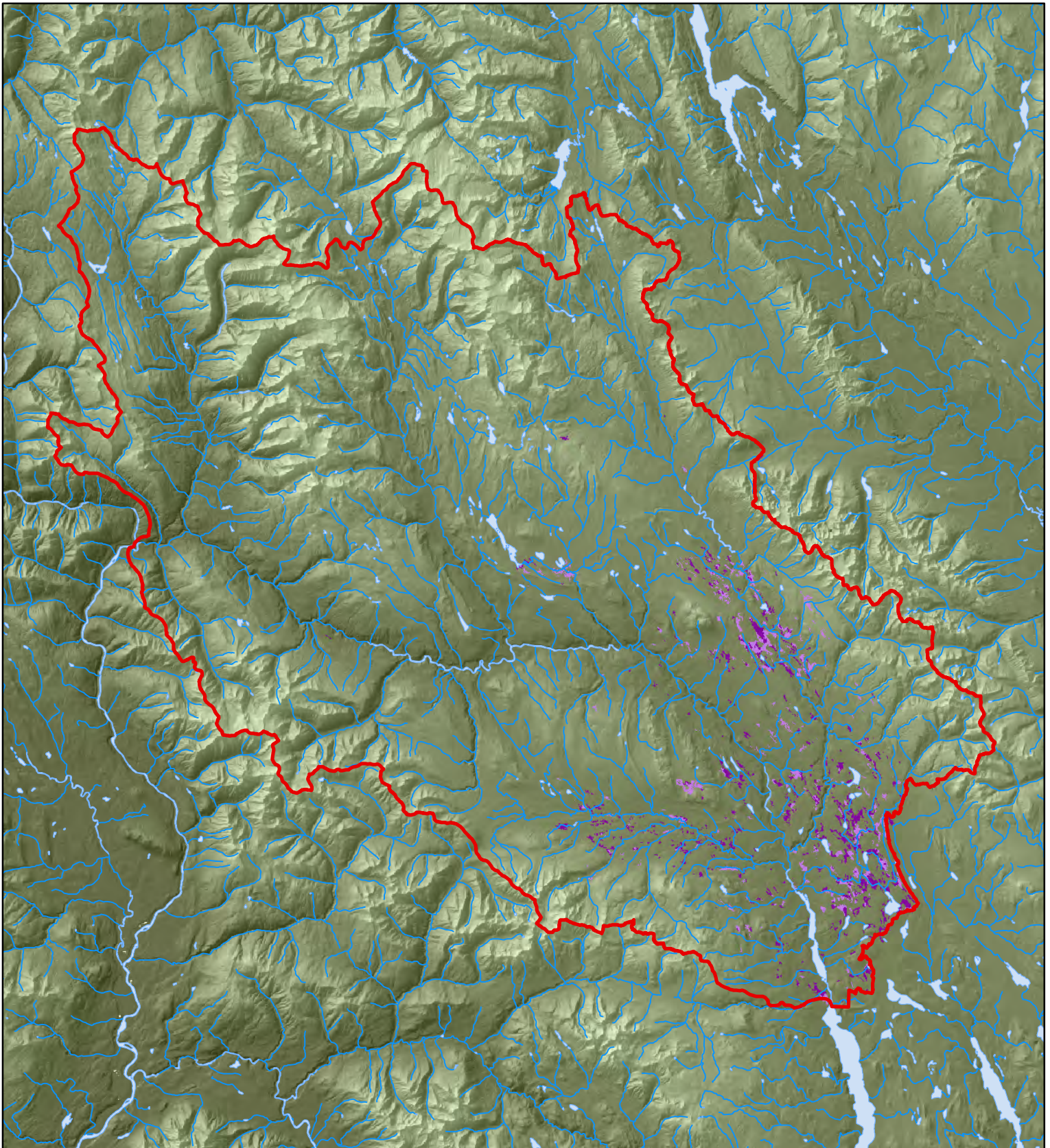
Map 18
Vegetation Resource Inventory: Western Hemlock

- Hw** ○ BWMT Study Area
- Hw>40 ~ 250k_Rivers
- Hw<40 ○ 250k_Lakes








UTM Zone 9N NAD83 Datum

MapSources/Notes:
 Data layers provided through BWMT.
 Data provided by Gentil Botanical Research.
 Mapping April 2012, A.Roberts.



Map 19
Vegetation Resource Inventory: Black Spruce

- | | |
|---|---|
| Black Spruce (Sb) |  BWMT Study Area |
|  Sb <40% |  250k_Rivers |
|  Sb >40% |  250k_Lakes |

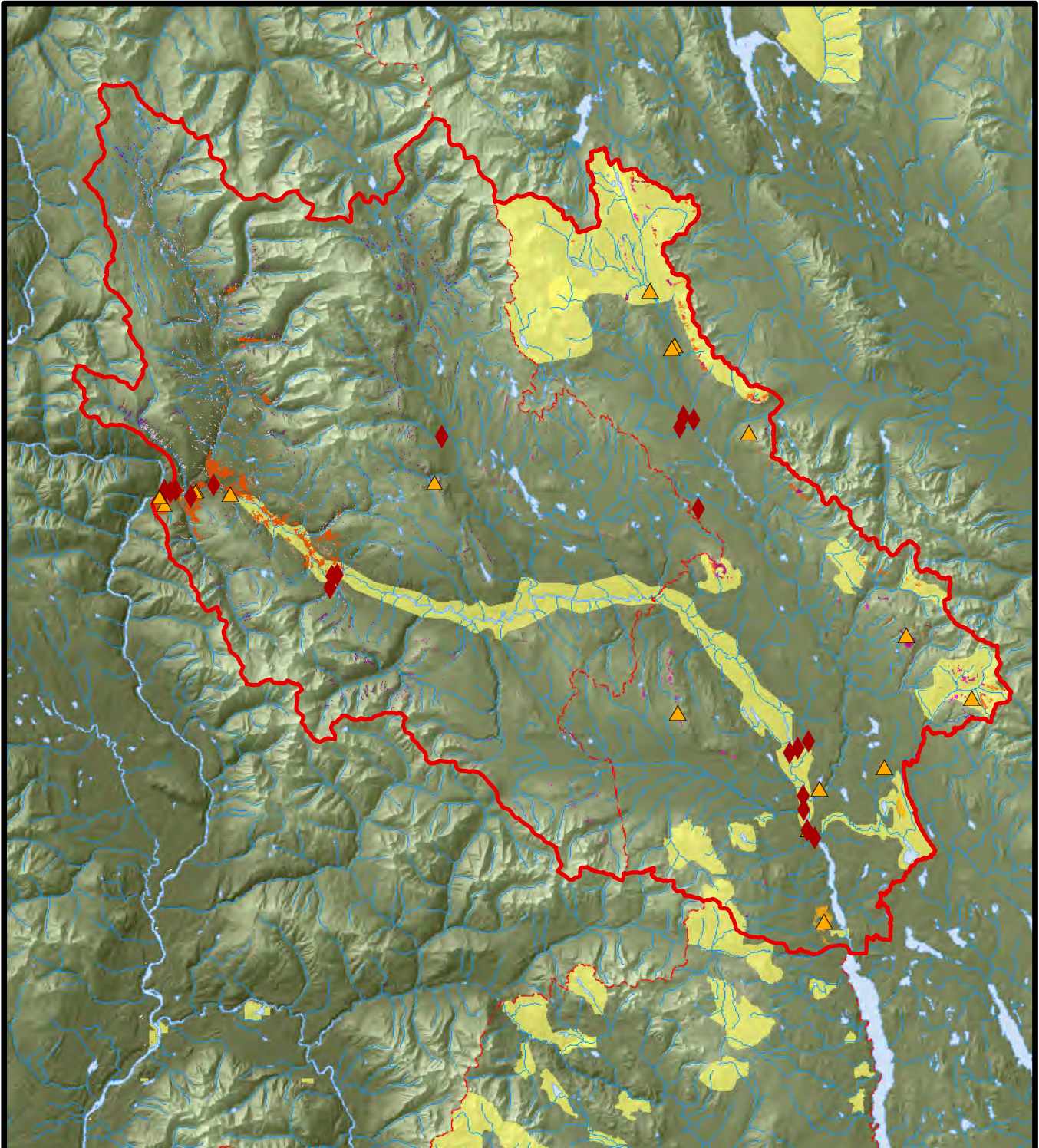
0 1.5 3 6 9
 Kilometers



UTM Zone 9N NAD83 Datum

MapSources/Notes:
 Data layers provided through BWMT.
 Data provided by Gentil Botanical Research.
 Mapping April 2012, A.Roberts.

Map 20



Rare Ecosystems from plots and PEM Rare Ecosystems

Rare Ecosystems

- ◆ Blue Listed
- ▲ Regionally Rare

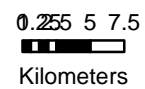
Bulkley PEM Rare Ecosystems

- SBSmc2/03
- ESSFmcw/03
- ESSFmc/02
- ESSFmcw/02

Kispiox PEM Rare Ecosystems

- ICHmc1, mc2/02
- ESSFmc,mcp/02
- ESSFwv,wvp/02
- ICHmc1/05, mc2/06
- ICHmc1, mc2/52/53/54
- ICHmc1/06, mc2/07

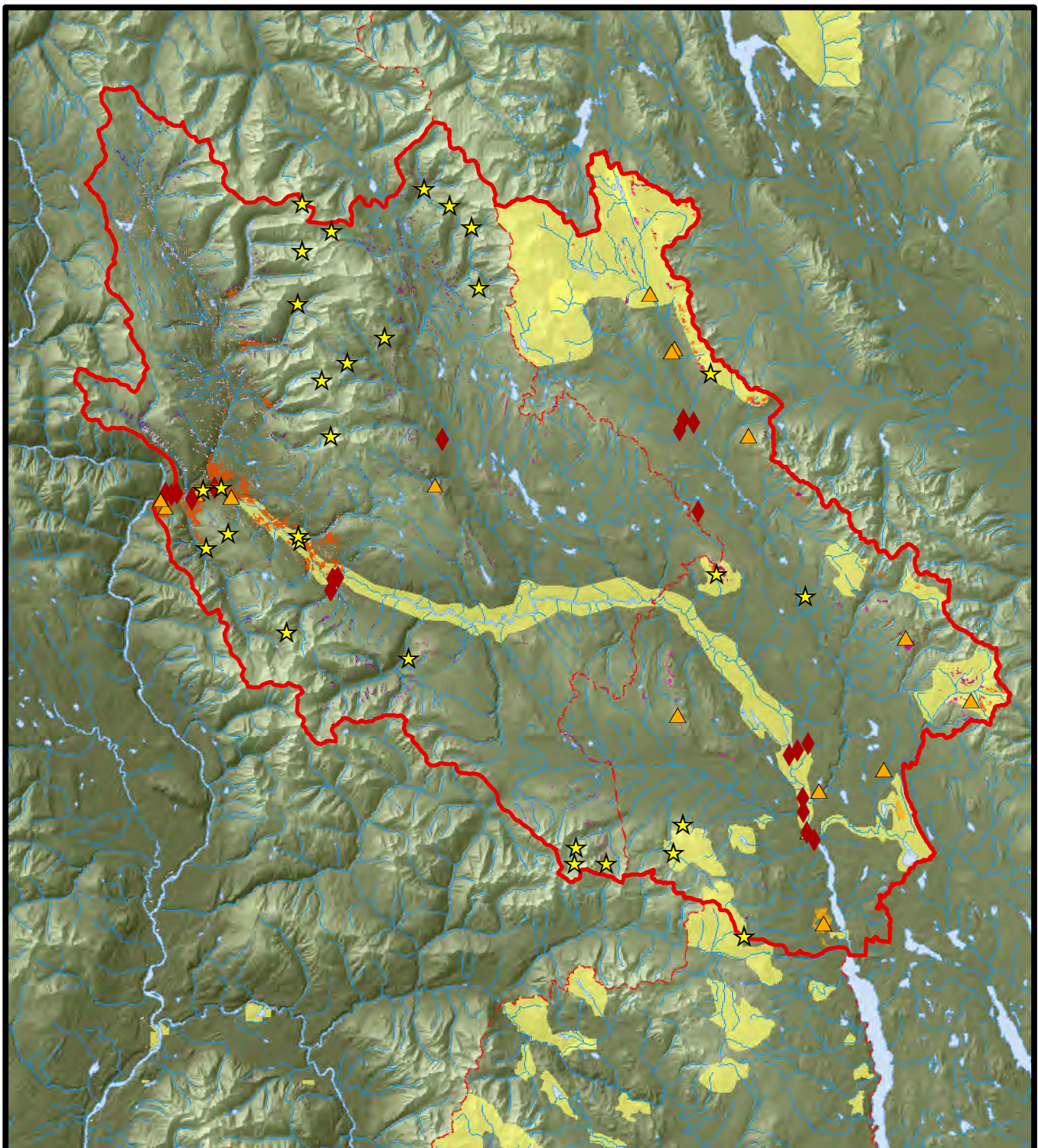
- Study Area
- - - District Boundary
- Protected Areas
- ~ 250k Rivers
- 250k Lakes



UTM Zone 9N NAD83 Datum

MapSources/Notes:
Data layers provided through BWMT.
Data provided by Gentil Botanical Research.
Mapping April 2012, A.Roberts.

Map 21



Rare Ecosystems from plots and PEM Rare Ecosystems

- Study Area
- District Boundary
- Protected Areas
- 250k Rivers
- 250k Lakes
- Rare Ecosystems**
- Blue Listed
- Regionally Rare
- MinOcc_BWMT

Kispiox PEM Rare Ecosystems

- ICHmc1, mc2/02
- ESSFmc,mcp/02
- ESSFw,wvp/02
- ICHmc1/05, mc2/06
- ICHmc1, mc2/52/53/54
- ICHmc1/06, mc2/07

Bulkley PEM Rare Ecosystems

- SBSmc2/03
- ESSFmcw/03
- ESSFmc/02
- ESSFmcw/02

0 2.5 5 7.5



Kilometers



UTM Zone 9N NAD83 Datum

MapSources/Notes:
 Data layers provided through BWMT.
 Data provided by Gentil Botanical Research.
 Mapping April 2012, A.Roberts.