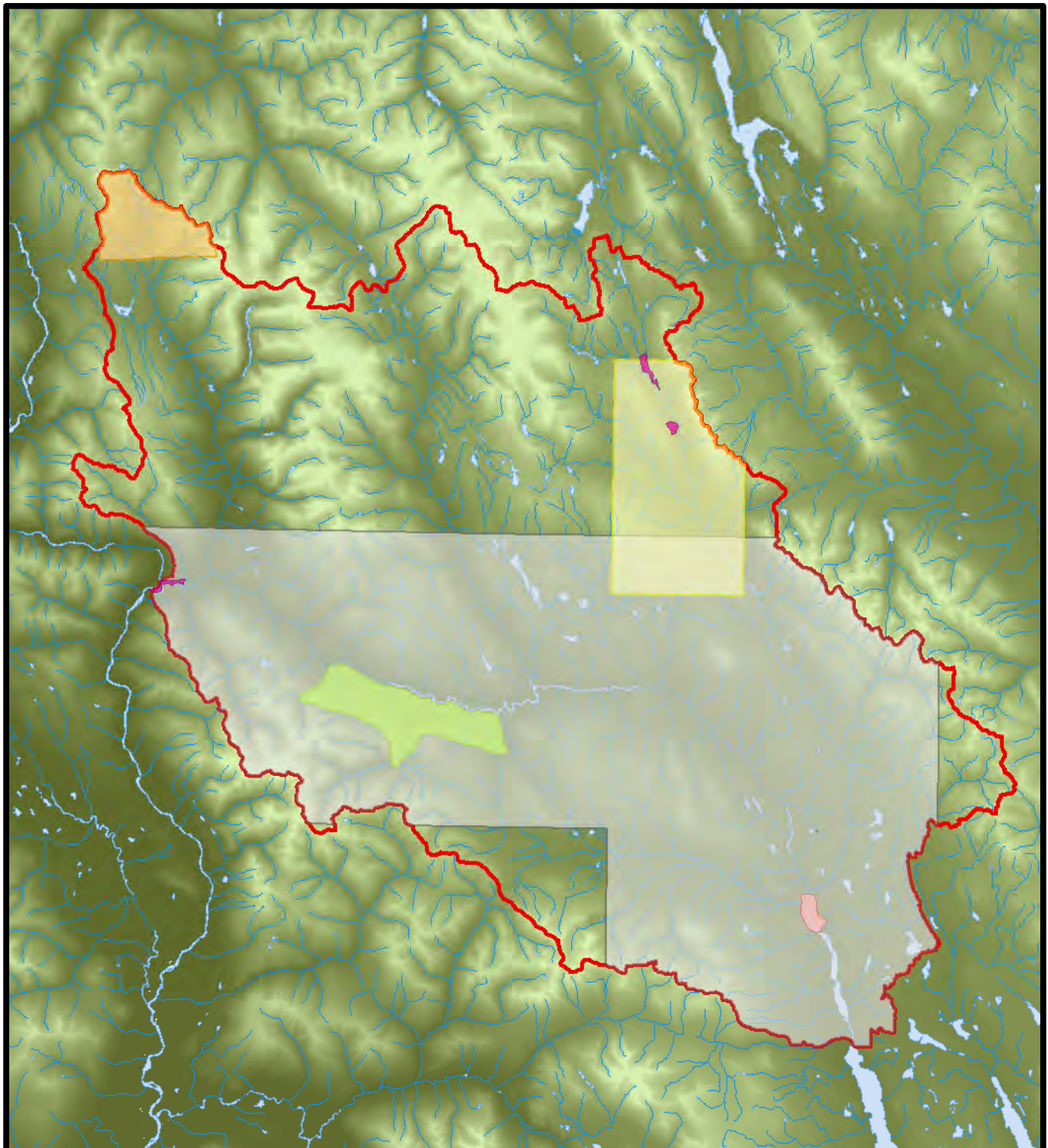


Map I



Terrestrial Ecosystem Mapping (TEM) Projects done in the Babine Watershed Monitoring Area

- | | | |
|---------------------------------|------------------------------------|-------------|
| Haeussler Rare Ecosystem Survey | Tommy Jack Pass TEM | Study Area |
| Big Slide TEM | Southern Parks Access Area Mapping | 250k Rivers |
| Nikitkwa TEM | Lea and Kowell Biophysical Mapping | 250k Lakes |

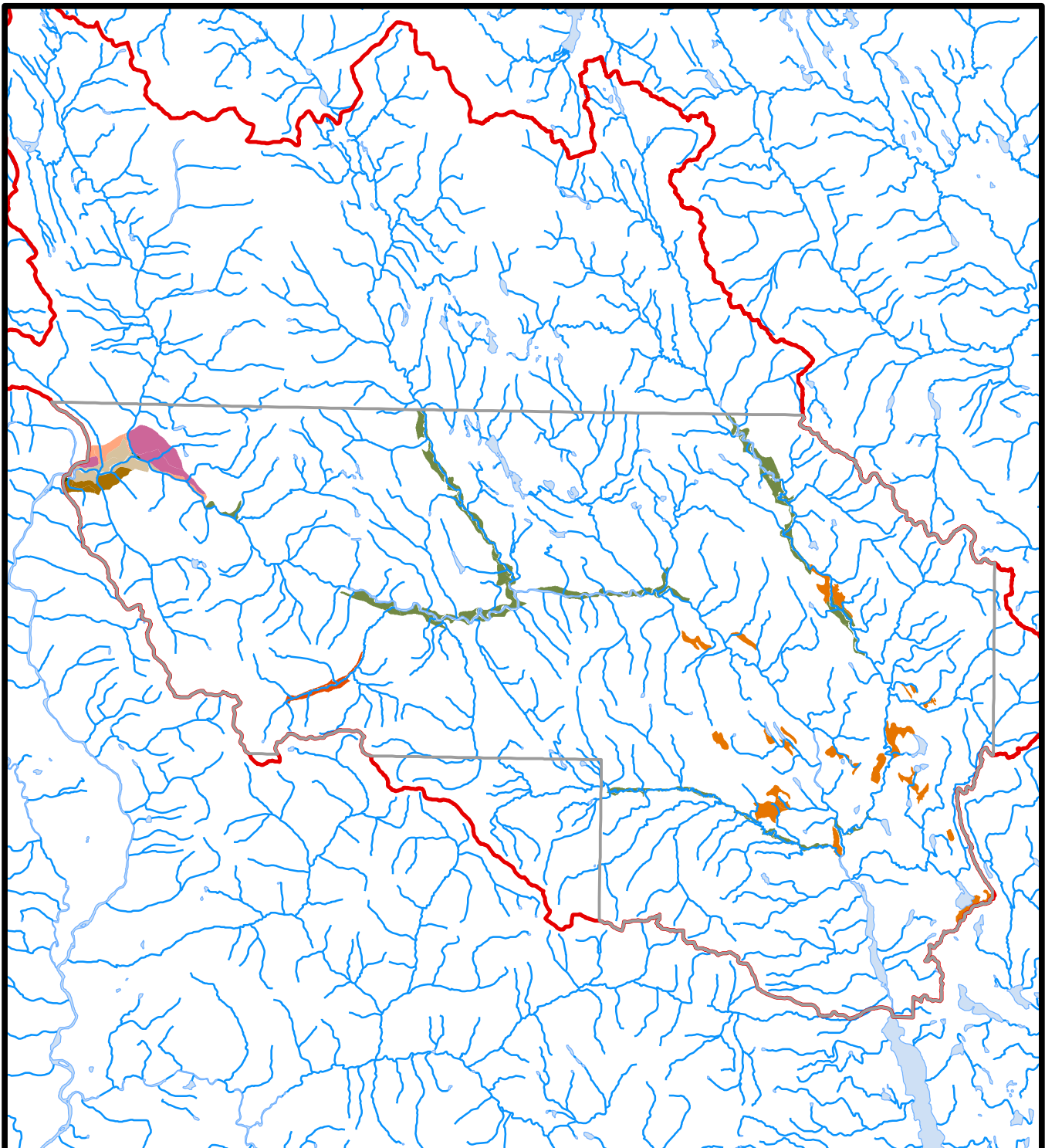
0 1 2 4 6
Kilometers



UTM Zone 9N NAD83 Datum

MapSources/Notes:
Data layers provided through BWMT.
Data provided by Gentil Botanical Research.
Mapping April 2012, A.Roberts.

Map 2



Lea and Kowall Biophysical Habitat Mapping - Rare Ecosystems

Units that may support rare plant communities:

Moderate to High likelihood:

- CD: Black cottonwood floodplain
- ST: Hybrid spruce floodplain forest
- BD: Paper birch fluvial fan
- LS: Lodgepole pine fluvial terrace
- BF: Paper birch south aspect
- AH: Trembling Aspen seral forest
- BS: Black spruce bog
- HO: Horsetail swamp

○ Biophysical Mapping Area

○ Study Area

~ 250k Rivers

○ 250k Lakes

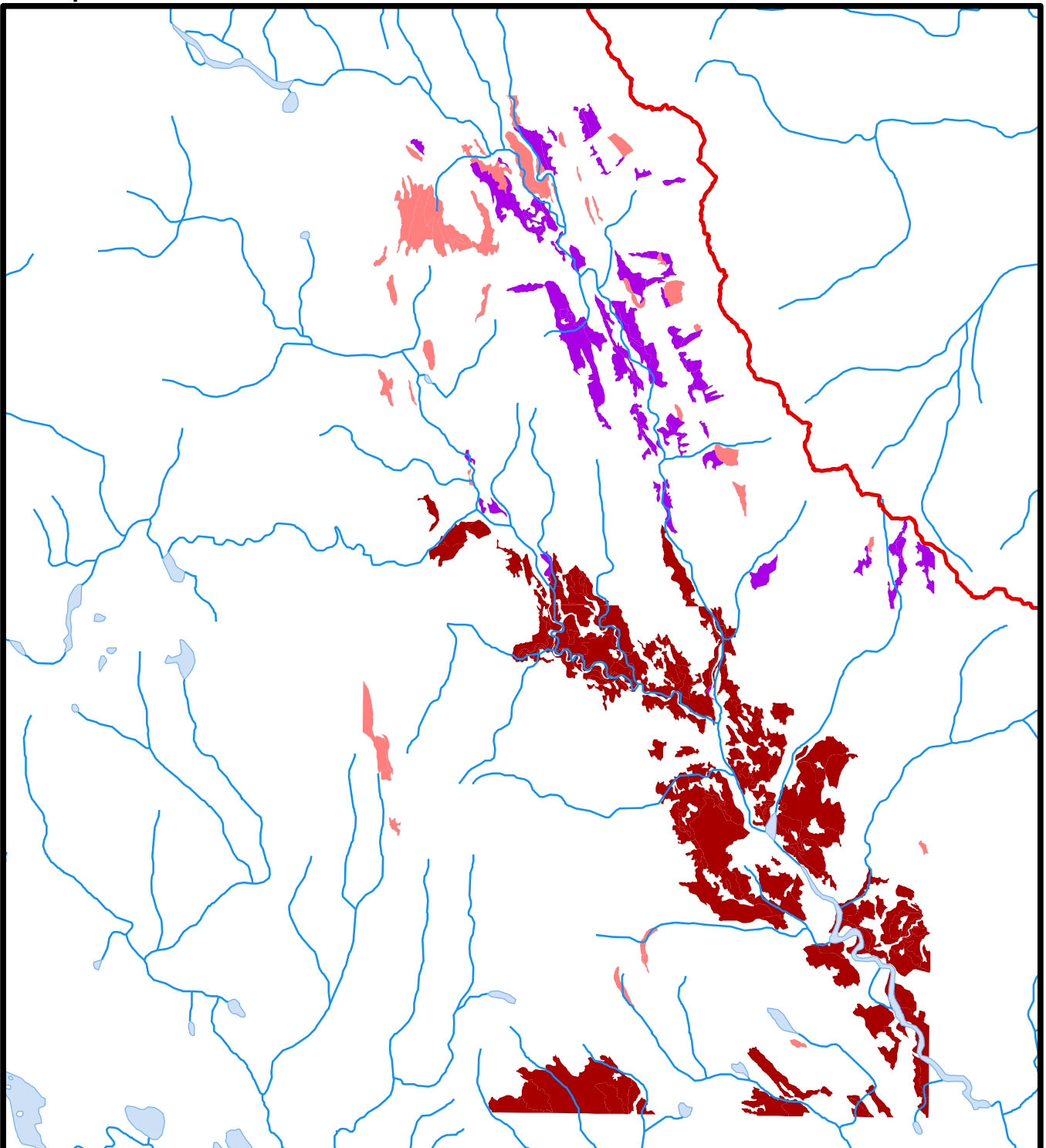
01.28.5 5 7.5
Kilometers



UTM Zone 9N NAD83 Datum

MapSources/Notes:
Data layers provided through BWMT.
Data provided by Gentil Botanical Research.
Mapping April 2012, A.Roberts.

Map 3




Nilkitkwa TEM-Rare Ecosystems


Polygons mapped as containing:  Study Area

 SBSmc2/03

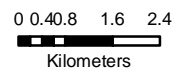
 ESSFmc/02

 Herbaceous Meadows

 250k Rivers

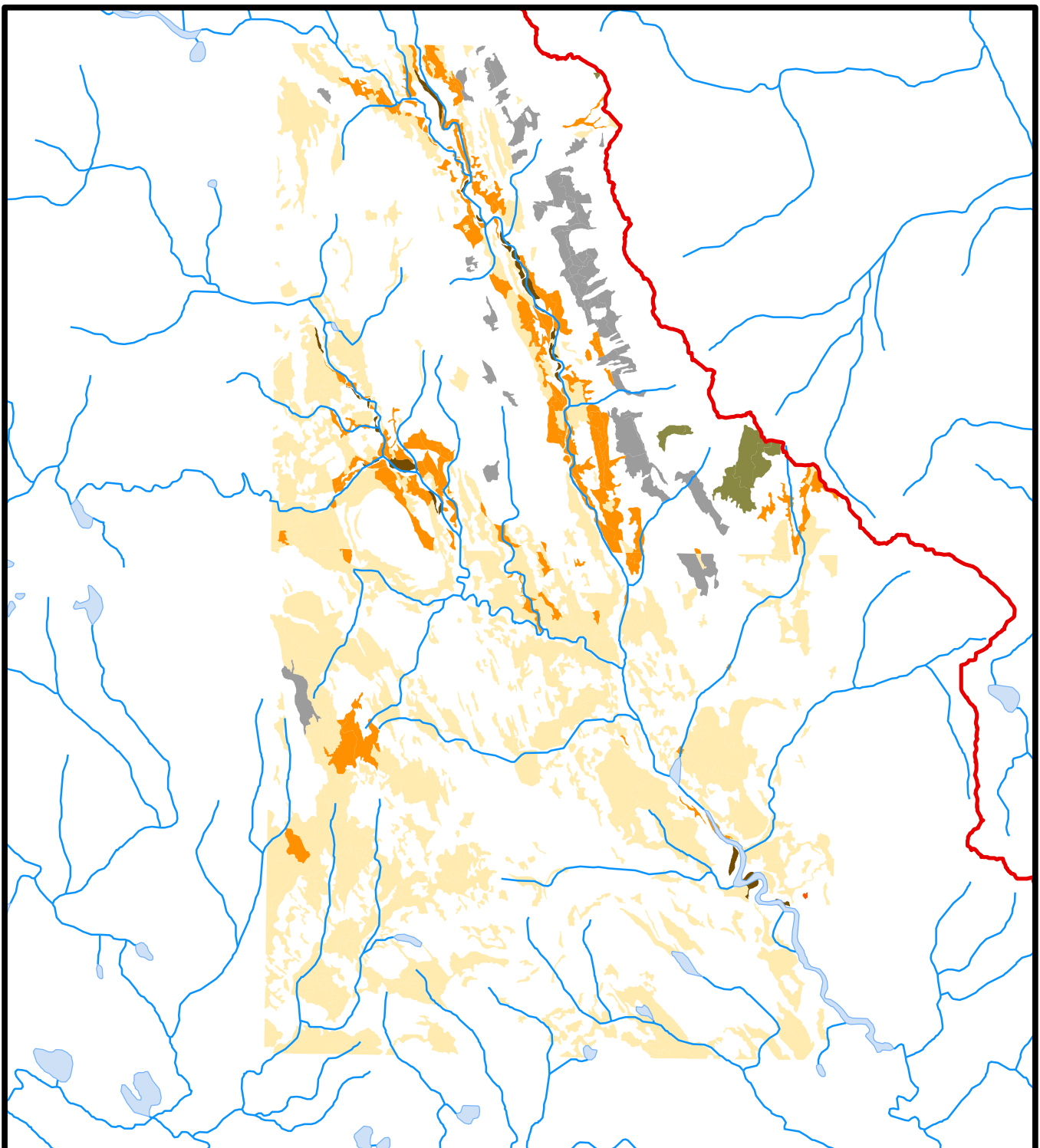
 250k Lakes

MapSources/Notes:
Data layers provided through BWMT.
Data provided by Gentil Botanical Research.
Mapping April 2012, A.Roberts.












UTM Zone 9N NAD83 Datum

Map 4



**Nilkitkwa TEM- Sensitive Ecosystems
Polygons mapped as containing:**

-  Avalanche Chutes
-  Carex Fens
-  Wet Seepage Meadows
-  Labrador Tea -Sphagnum bogs
-  Drummond's Willow-Alder Floodplain
-  Willow Twinberry Floodplain Carr
-  Study Area
-  250k Rivers
-  250k Lakes

MapSources/Notes:
Data layers provided through BWMT.
Data provided by Gentil Botanical Research.
Mapping April 2012, A.Roberts.

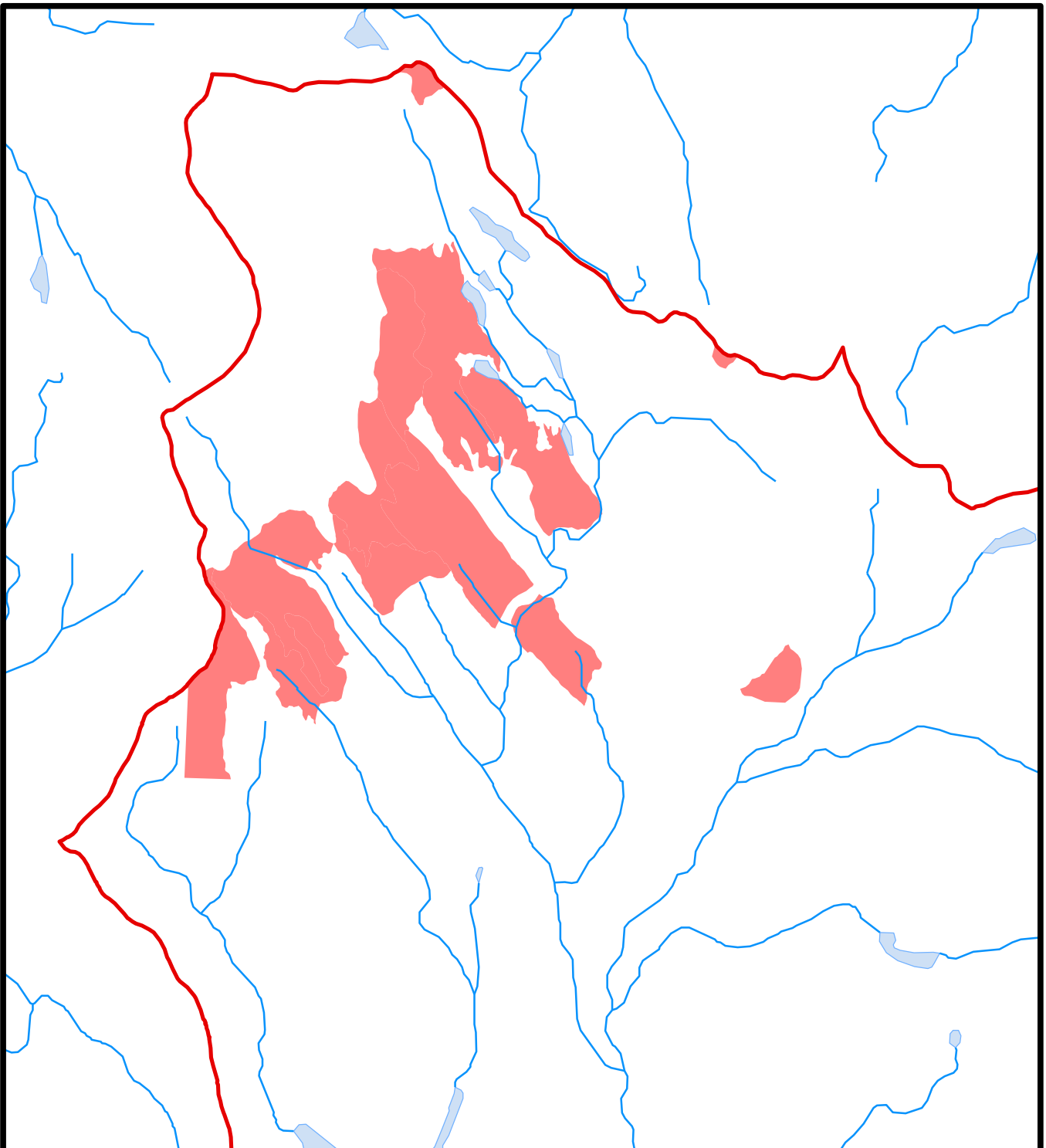
0 0.375 0.75 1.5 2.25

Kilometers



UTM Zone 9N NAD83 Datum

Map 5



Tommy Jack Pass - Rare Ecosystems

- Polygons mapped as containing:**
-  Study Area
 -  ESSFww/02
 -  250k Rivers
 -  250k Lakes

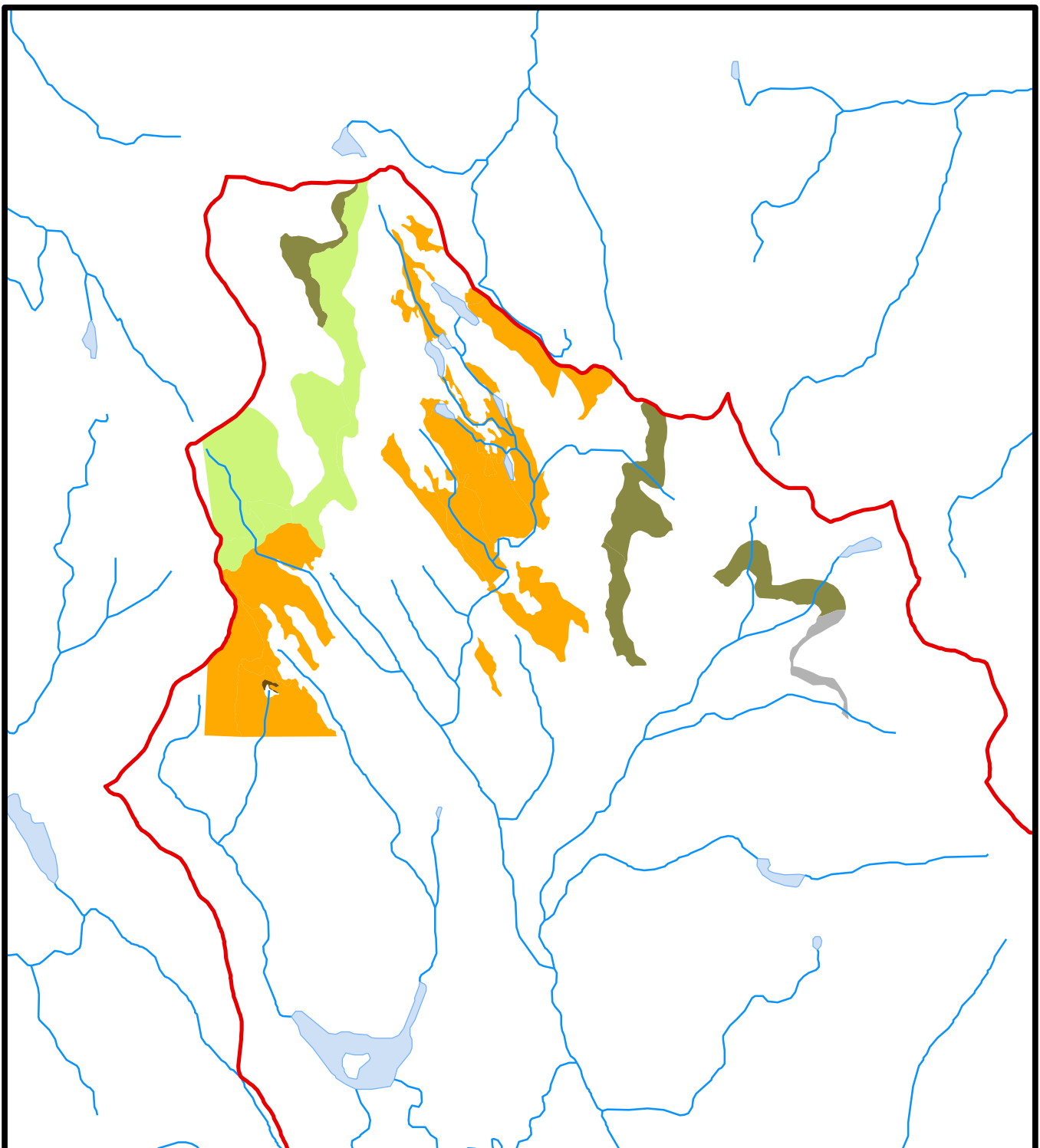
0 0.2 0.4 0.8 1.2
Kilometers










UTM Zone 9N NAD83 Datum

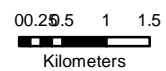
MapSources/Notes:
Data layers provided through BWMT.
Data provided by Gentil Botanical Research.
Mapping April 2012, A.Roberts.

Map 6



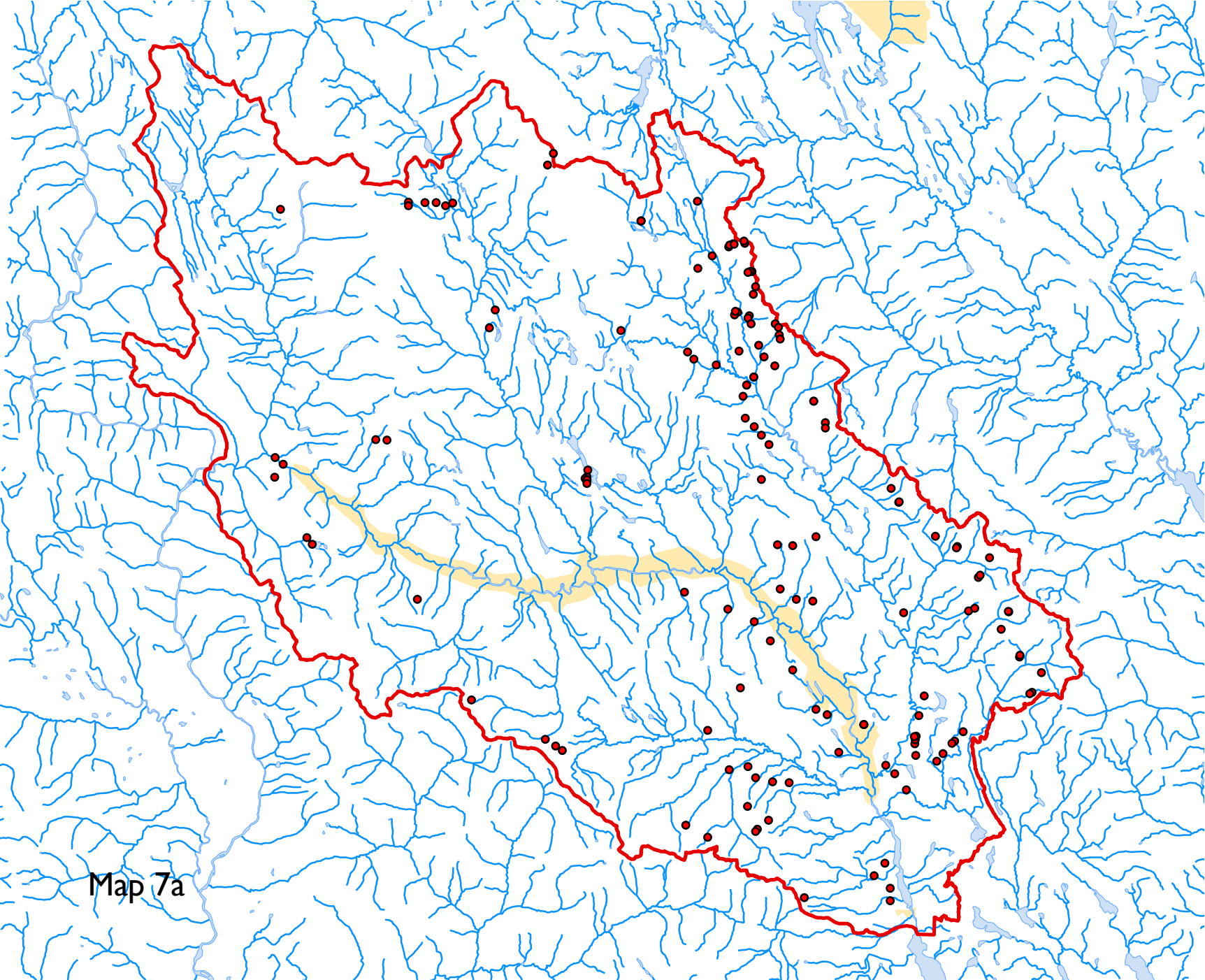
Tommy Jack Pass TEM- Sensitive Ecosystems

- Polygons mapped as containing:**
-  Study Area
 -  Alder Fern Avalanche Chute
 -  Wet seepage meadow
 -  Herb meadow
 -  Water sedge fen
 -  Willow-water sedge fen
 -  250k Rivers
 -  250k Lakes



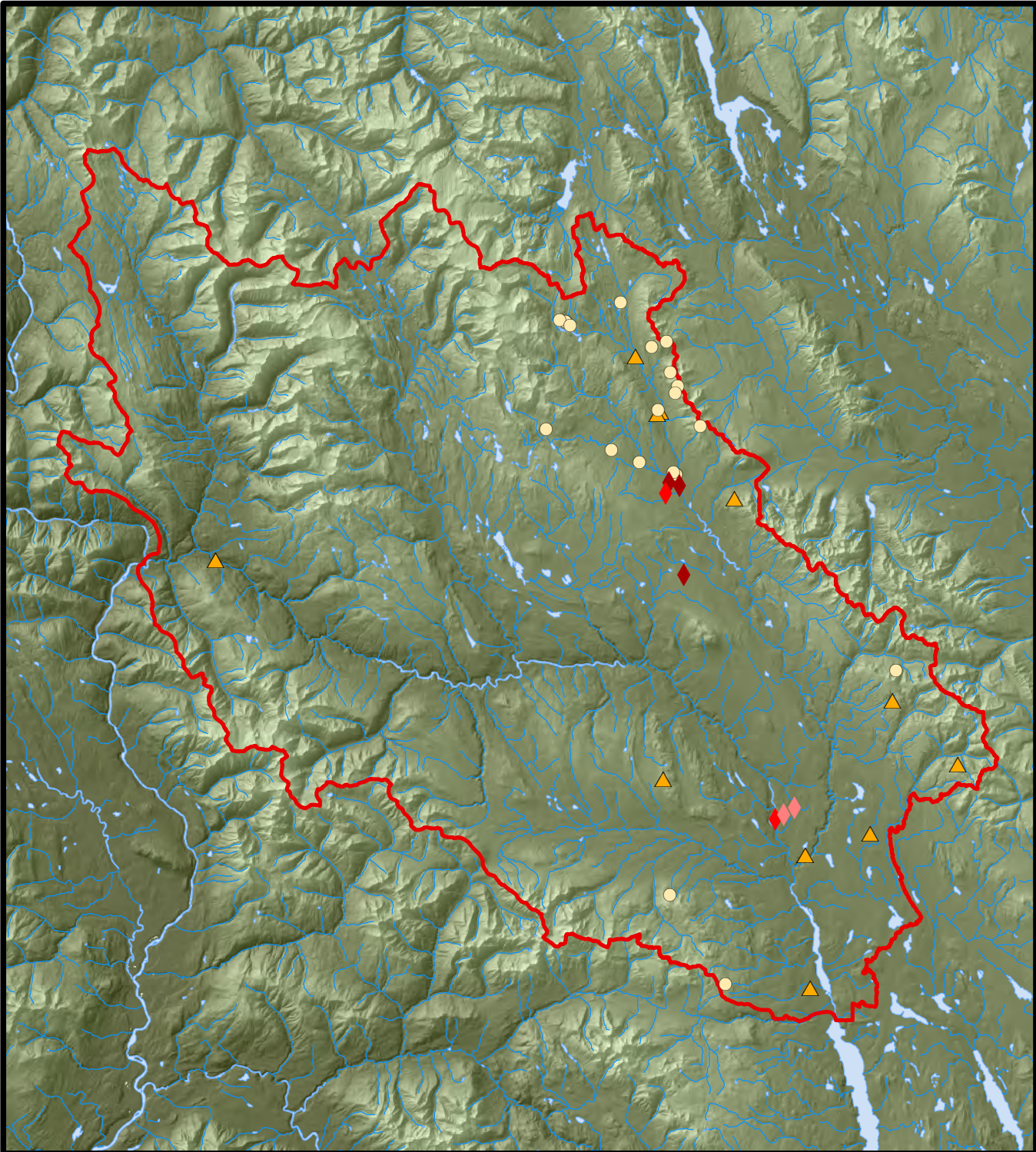
UTM Zone 9N NAD83 Datum

MapSources/Notes:
Data layers provided through BWMT.
Data provided by Gentil Botanical Research.
Mapping April 2012, A.Roberts.



Map 7a

Map 7b



Sites from Provincial Plot Data

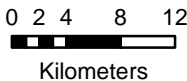
Rare Ecosystems

- ◆ SBSmc2/ Wb10
- ◆ SBSmc2/ Wf02
- ◆ SBSmc2/ Wf08

Other Ecosystems

- ▲ Potentially Rare
- Sensitive

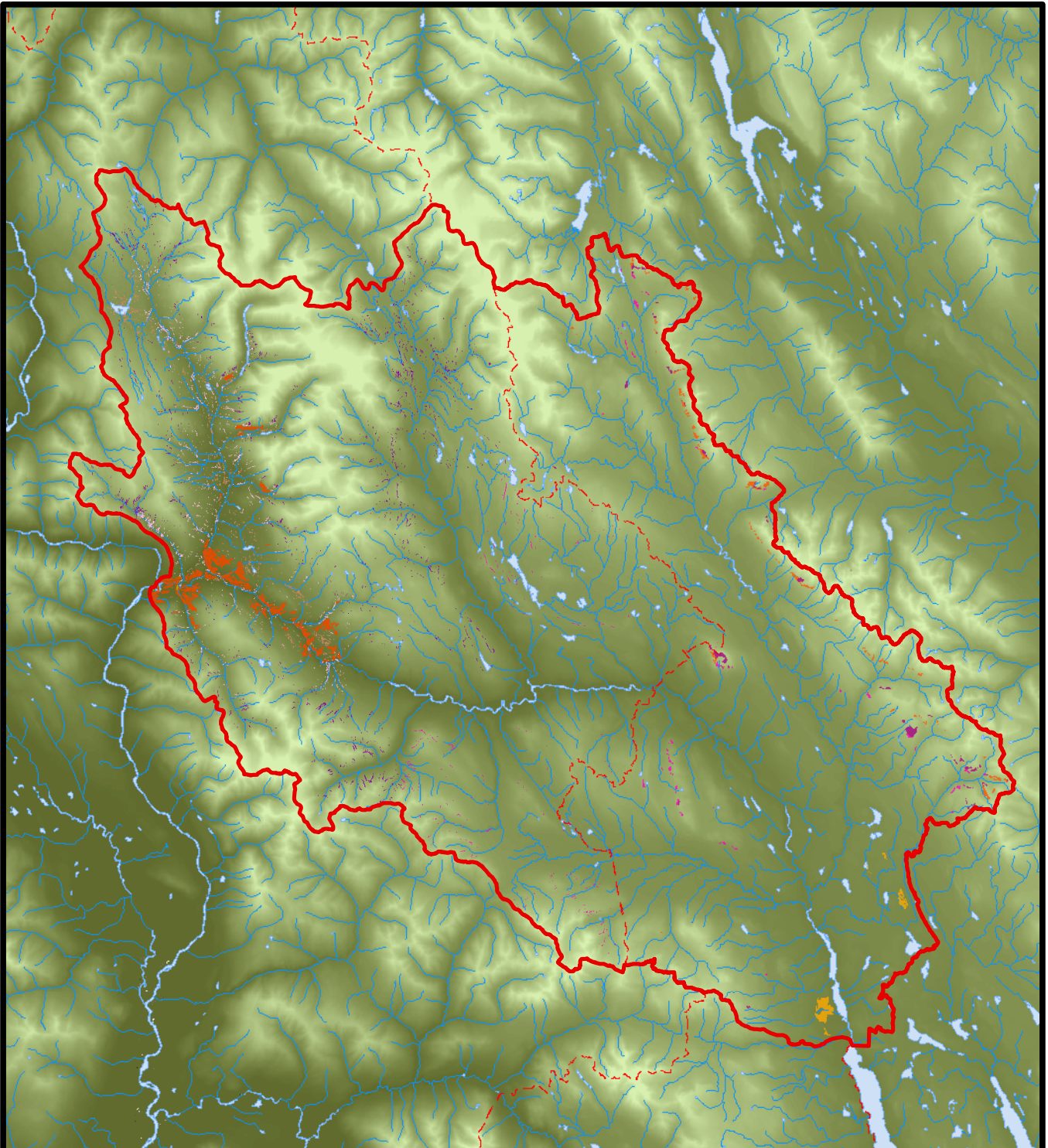
- Study Area
- ~ 250k Rivers
- 250k Lakes



UTM Zone 9N NAD83 Datum

MapSources/Notes:
Data layers provided through BWMT.
Data provided by Gentil Botanical Research.
Mapping April 2012, A.Roberts.

Map 8



Predictive Ecosystem Mapping (PEM) Projects done in the Babine Watershed Monitoring Area

Kispiox PEM Rare Ecosystems

- ICHmc1, mc2/02
- ESSFmc,mcp/02
- ESSFwv,wvp/02
- ICHmc1/05, mc2/06
- ICHmc1, mc2/52/53/54
- ICHmc1/06, mc2/07

Bulkley PEM Rare Ecosystems

- SBSmc2/03
- ESSFmcw/03
- ESSFmc/02
- ESSFmcw/02

- Study Area
- District Boundary
- ~ 250k Rivers
- 250k Lakes

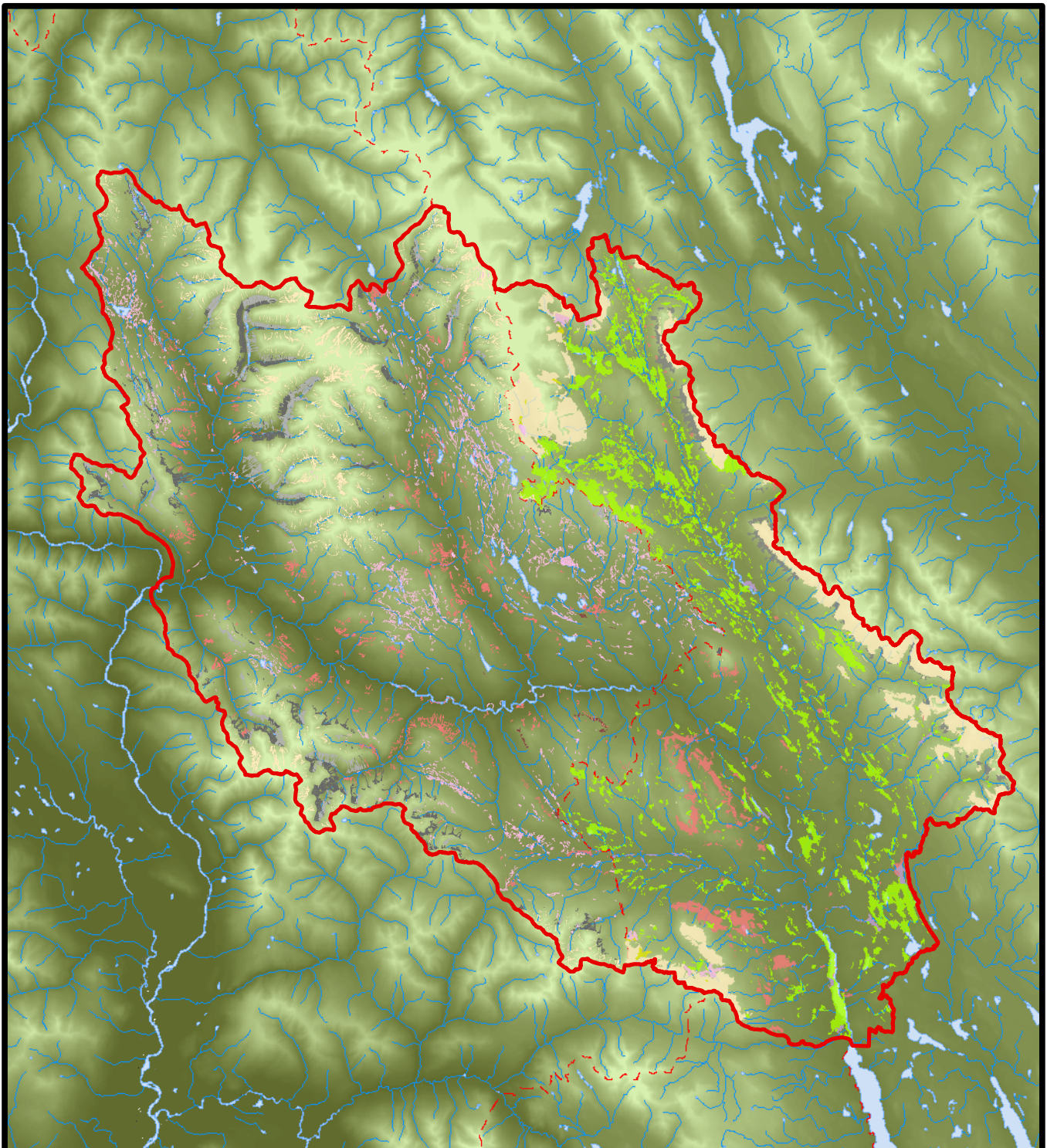
0 1 2 4 6
Kilometers



UTM Zone 9N NAD83 Datum

MapSources/Notes:
Data layers provided through BWMT.
Data provided by Gentil Botanical Research.
Mapping April 2012, A.Roberts.

Map 9



Predictive Ecosystem Mapping (PEM) Projects done in the Babine Watershed Monitoring Area

Kispiox PEM Sensitive Ecosystems

- Avalanche chutes - cool
- Avalanche chutes - warm
- Alder-willow community
- Subalpine deciduous
- Wetlands and wet meadows
- Herbaceous meadows

Bulkley PEM Sensitive Ecosystems

- Avalanche chutes
- Alder-willow community
- Non-forested wetlands
- High elevation wetlands
- Riparian meadow
- Wet meadows
- Herbaceous meadows

○ Study Area

○ District Boundary

~ 250k Rivers

○ 250k Lakes

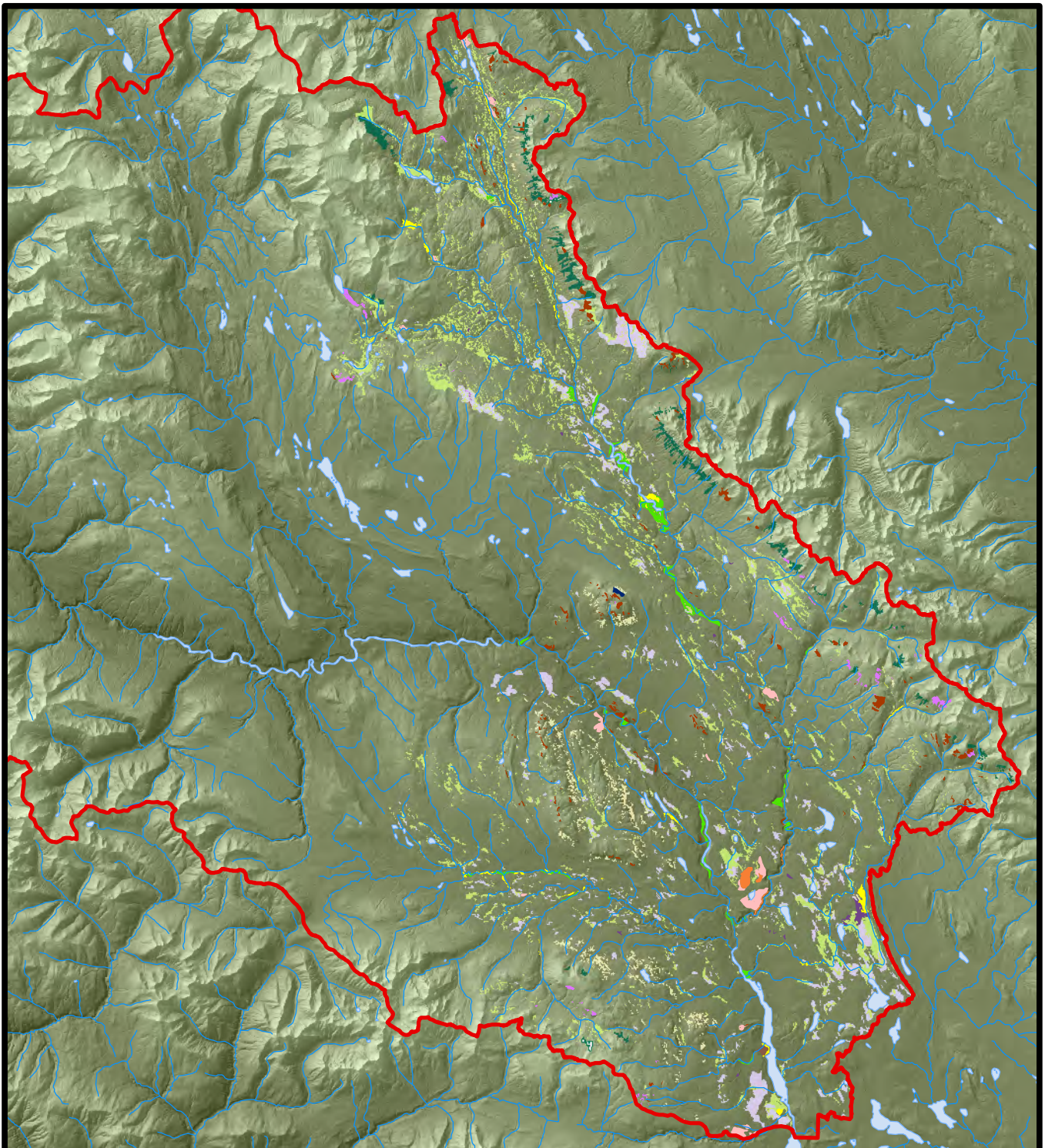
0 12 4 6
Kilometers



UTM Zone 9N NAD83 Datum

MapSources/Notes:
Data layers provided through BWMT.
Data provided by Gentral Botanical Research.
Mapping April 2012, A.Roberts.

Map 10



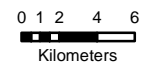
Bulkley TSA Ecological Exception Mapping

- Shallow soils
- Bedrock controlled
- Very coarse textured soil
- Coarse textured soil
- Dry grassland
- Mesic meadow
- Very wet seepage
- Non-forested floodplain
- Forested floodplain
- Fluvial fan

Lower likelihood of rare ecosystems:

- Forested wetlands
- Non-forested wetlands
- Permanent shrubs
- Avalanche chutes
- Rhododendron shrubs

- Study Area
- ~ 250k Rivers
- 250k Lakes



UTM Zone 9N NAD83 Datum

MapSources/Notes:
 Data layers provided through BWMT.
 Data provided by Gentil Botanical Research.
 Mapping April 2012, A.Roberts.