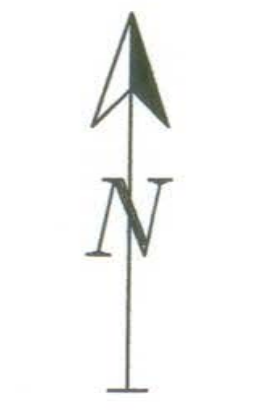


Reconnaissance (1:20,000) Fish and Fish Habitat
Stream Inventory in the Kispiox Working Group

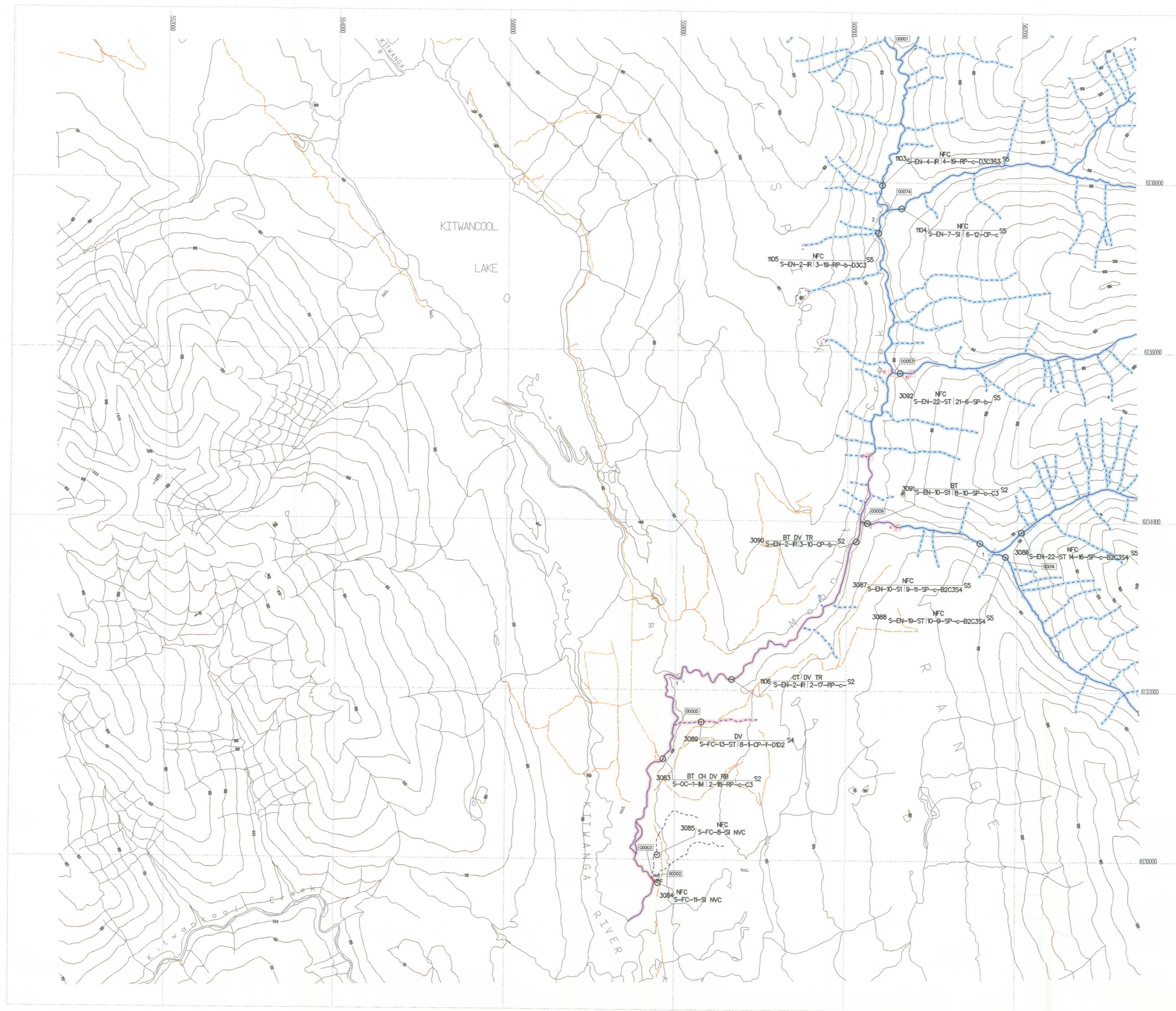
MOONLIT CREEK

Date: 1998/06/11 (yyyy/mm/da)

Company: SJS of TRITON Environmental Consultants Ltd.



Scale 1:20,000



Stream Information Summary

123-12345-1234... Watershed Code

Stream Summary Symbol

Sample Site ID: S-PC-3-R-12-12-RP-g-C3C4S3-S1

Stream(S) Wetland(W): CO DV RB

Stream Classification: Fish Code(s) S1

Forest Practices Code Riparian Classes (Stream Classification):

Riparian Class	Reserve Zone(m)	Management Zone(m)	Management Area(m)
S1	50	20	70
S2	30	20	50
S3	20	20	40
S4	0	30	30
S5	0	30	30
S6	0	20	20

Obstructions

- Beaver Dam
- Cascade
- Dam
- Falls
- Culvert
- Persistent Debris Accumulation

Features

- Eroded Bank
- Alluvial Fan
- Colluvial Fan
- Talus Cone
- Rock Outcrop
- Slumping Bank
- Slump
- Bedrock-Confinement
- Landslide Debris
- Landslide Area
- Dewatered Section
- Braided Stream
- Backwater
- Wetland/Marsh
- Spring
- Groundwater
- Tributary
- Side Channel

Enhancement/Management Activities

- Fish Hatchery
- Fishway
- Incubation Box
- Spawning Channel
- Weir
- Waste Regulated Site Aquaculture
- Waste Regulated Site Hatchery
- Counting Fence
- Fisheries Sensitive Zone

Hydrometric Stations

- Flow Active
- Flow Inactive
- Well
- Both Active
- Both Inactive
- Level Active
- Level Inactive

Fish Presence

- Fish Presence - Sampled
- Fish Presence - Inferred
- No Fish Presence - Sampled
- No Fish Presence - Inferred

Base Map Anomalies

- Field-Identified Stream
- Base Map Discontinuity
- No Visible Channel

TRIM Features

- River/Stream
- River/Stream - intermittent
- Lake
- Lake - intermittent
- Lake - indefinite
- Swamp
- Marsh
- Island
- Sand/Gravel Bar
- Coastline
- Icefield
- Glacier
- Road - 1 lane, loose surface
- Road - rough surface
- Index Contour (100m interval)

* hydrological features outside the project study area appear as thin black lines

Fish Species

CODE	DESCRIPTION	CODE	DESCRIPTION	CODE	DESCRIPTION
BT	Bull Trout	NS	Not Sampled		
CH	Chinook	RE	Rainbow Trout		
CO	Coho	SU	Suckers, General		
CT	Cutthroat Trout	TR	Trout, General		
DV	Dolly Varden	TSB	Threespine Stickleback		
NFC	No Fish Caught				

SOURCE: MELP

Stream Summary Symbol Information

REACH CHARACTERISTICS	CHANNEL MORPHOLOGY	DISTURBANCES	
CODE	DESCRIPTION	CODE	DESCRIPTION
NS	not specified	F	flow
NVC	no visible channel	G	gravel
CO	confined	C	cobble
FC	frequently confined	B	bedrock, boulders, etc.
OC	occasionally confined	RP	riffle pool
UN	unconfined	CP	cascade pool
NA	not applicable	SP	step pool
TM	terrace meanders		
IM	irregular meanders		
ME	regular meanders		
R	irregular wandering		
S	sinuous		
ST	straight		

Disclaimer

The Province has not accepted the contents of this product for the purposes of the Forest Practices Code, and reserves the right to dispute the validity of summarized results. The Province does not necessarily agree with the classification assigned to any individual stream reach, for use in logging plans, silviculture prescriptions or any other application.

Inventory Source Information Codes

CODE	DESCRIPTION	CODE	DESCRIPTION	CODE	DESCRIPTION	CODE	DESCRIPTION	CODE	DESCRIPTION
TR	Topographic Map	AP	Aerial Photography	AP	Aerial Photography	AP	Aerial Photography	AP	Aerial Photography
TR	1:25,000 TRM Map	AP	Aerial Photography	AP	Aerial Photography	AP	Aerial Photography	AP	Aerial Photography
NS	Not Specified	NA	Not Applicable	NA	Not Applicable	NA	Not Applicable	NA	Not Applicable
CH	Chinook	CO	Coho	CT	Cutthroat Trout	DV	Dolly Varden	NFC	No Fish Caught

Inventory Source Information

BASE: TR STR SYM: INV
 LOC: FDG LK SYM: N/A
 HAB: INV
 FISH: INVD
 DATE INV: 1997/09/22 INV MGMT: MELP

Adjoining Sheet Index in the British Columbia Geographic System

103P.049	103P.050	083M.041
103P.039	103P.040	083M.031
103P.029	103P.030	083M.021

Base Map Information

Projection: Universe Transvers Mercator
 Datum: North American Datum - NAD83
 UTM Zone: 9